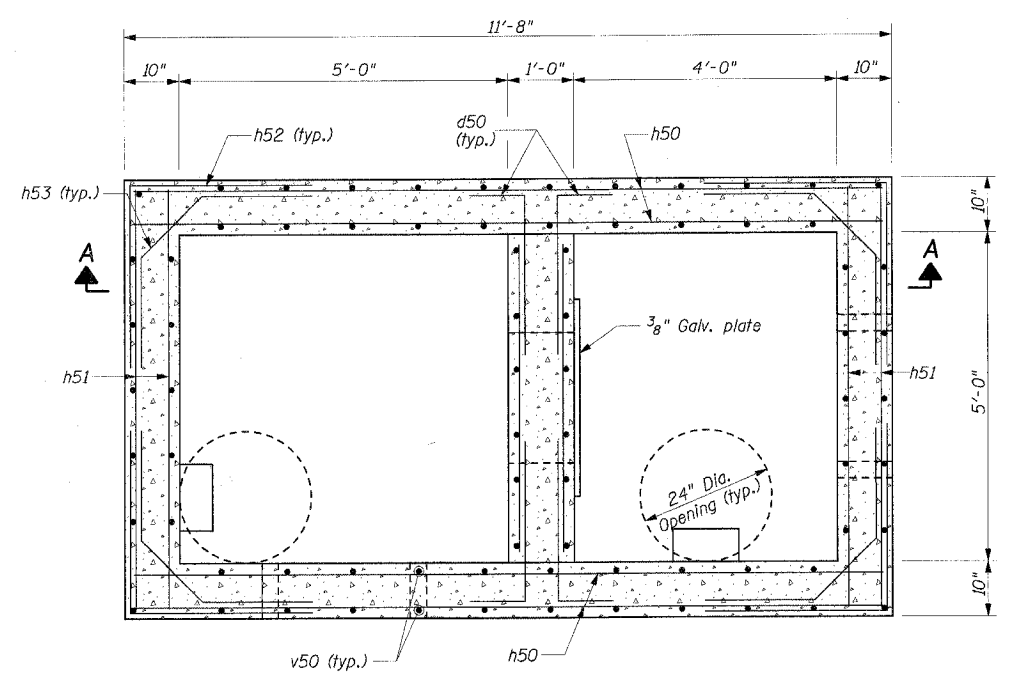


PLAN VIEW
SCALE: 3/4" = 1'-0"



WALL REINFORCEMENT PLAN

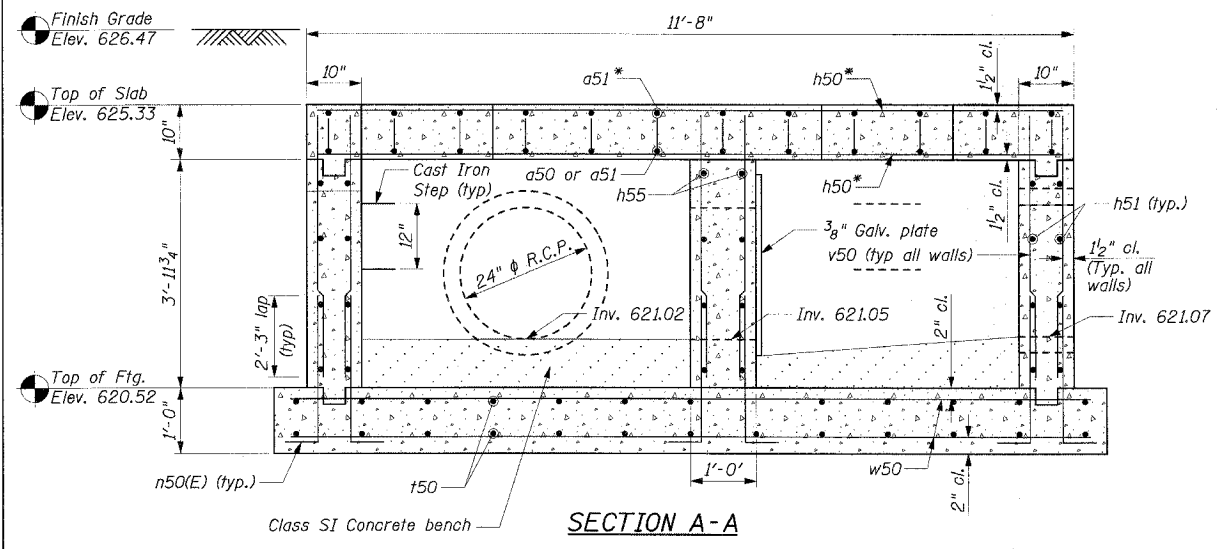
BAR AND MATERIAL LIST
(FOR INFORMATION ONLY)

Bar	No.	Size	Length	Shape
d50	14	#5	7'-6"	U
a51	22	#5	6'-4"	—
a52	32	#5	2'-4"	—
d50	16	#5	2'-10"	—
h50	34	#5	11'-4"	—
h51	8	#5	6'-4"	—
h52	16	#5	4'-6"	—
h53	16	#5	4'-2"	—
h54	64	#5	2'-8"	—
h55	4	#5	4'-8"	—
n50(E)	80	#5	3'-7"	—
f50	26	#6	7'-4"	—
v50	80	#5	4'-6"	—
w50	16	#6	12'-4"	—
Description	Unit	Quantity		
REINFORCEMENT BARS	LB.	2140		
REINFORCEMENT BARS, EPOXY COATED	LB.	300		
CLASS SI CONCRETE	CU. YD.	10.1		
TYPE 1 FRAME, OPEN LID	EA.	2		

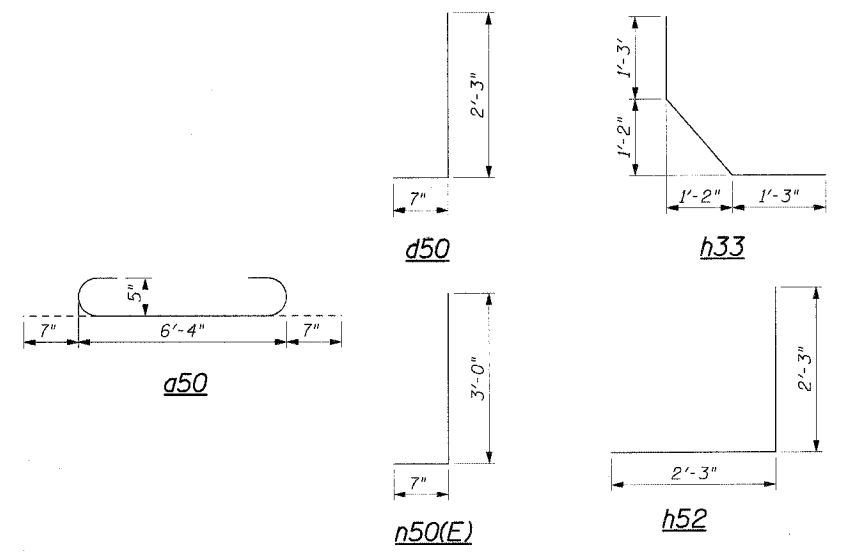
BILL OF MATERIAL

Item	Description	Unit	Quantity
	SPECIAL STRUCTURE SP-5	EA.	1

* Indicates pay item governed by a special provision



SECTION A-A



NOTES:

- All steel plates shall conform to the requirements of AASHTO M270 grade 36.
- Bolts, cap screws and nuts shall conform to the requirements of ASTM designation A 307 except that threaded rods, nuts and washers shall conform to AASHTO M 154.
- All bolts, nuts, cap screws, washers and lock washers shall be galvanized according to AASHTO M 232.
- The Contractor shall use the capsule or adhesive cartridge type anchor rods that have been previously tested and given a prior approval by the Department. The Contractor shall install these anchor rods in pre-drilled holes according to the manufacturer's recommendations and procedures. The capsule or the adhesive cartridge shall be sealed with premeasured amounts of the chemical.

REVISIONS	
NAME	DATE

ILLINOIS DEPARTMENT OF TRANSPORTATION
**SPECIAL STRUCTURE SP-5
OUTLET 15**
FAP RTE. 575 (U.S.30)
SECTION (B & 14) R-3
WILL COUNTY

SCALE: VERT. AS SHOWN
HORIZ. DATE: 3/1/05

DRAWN BY: GRS
CHECKED BY: ATI

CMT
CRAWFORD MURPHY & TILLY, INC.
CONSULTING ENGINEERS
SPRINGFIELD, ILL. ■ AURORA, ILL. ■ ST. LOUIS, MO

I:\data\006602\draw\other\drainage_structures\structure-5a.dgn