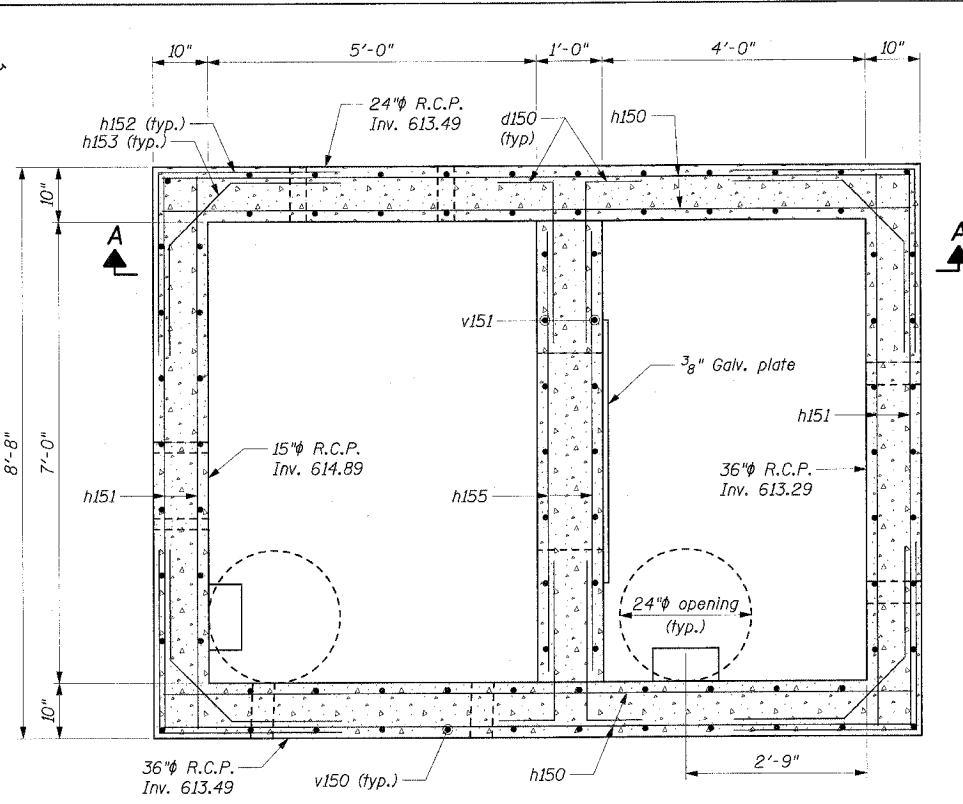
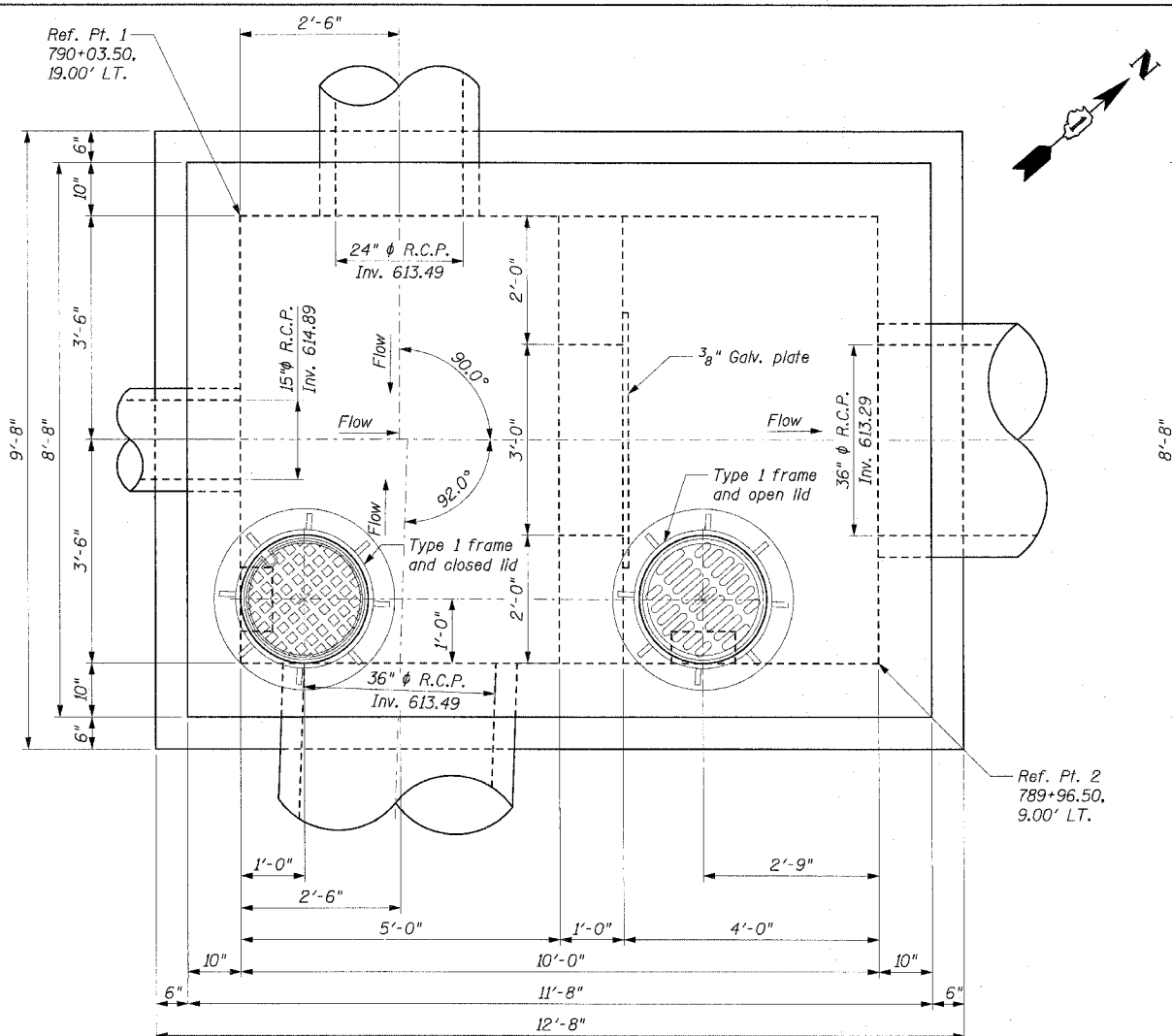


F.A.P. RTE.	SECTION	COUNTY	TOTAL SHEETS	SHEET NO.
575	(B&14) R-3	WILL	390	222
STA.	TO STA.			
FED. ROAD DIST. NO.	ILLINOIS FED. AID PROJECT			
CONTRACT NO. 60961				

Sheet 12 of 15



REINFORCEMENT PLAN

BAR AND MATERIAL LIST
(FOR INFORMATION ONLY)

Bar	No.	Size	Length	Shape
a150	16	#5	8'-4"	—
a151	16	#5	2'-4"	—
a152	16	#7	2'-4"	—
a153	15	#7	10'-0"	—
a154	5	#7	5'-7"	—
d150	20	#5	2'-10"	—
h150	35	#5	11'-4"	—
h151	24	#5	8'-4"	—
h152	24	#5	4'-6"	—
h153	24	#5	4'-2"	—
h154	32	#5	4'-0"	—
h155	2	#5	6'-8"	—
h156	32	#5	3'-8"	—
h157	24	#5	2'-10"	—
h158	24	#5	2'-0"	—
h159	11	#6	11'-4"	—
n150(E)	78	#5	3'-7"	—
t150	26	#6	9'-4"	—
v150	66	#5	5'-7"	—
v151	12	#5	3'-9"	—
v152	12	#5	1'-9"	—
v154	8	#5	2'-10"	—
w150	20	#6	12'-4"	—

Description	Unit	Quantity
REINFORCEMENT BARS	LB.	3310
REINFORCEMENT BARS, EPOXY COATED	LB.	290
CLASS SI CONCRETE	CU. YD.	13.1
TYPE 1 FRAME, CLOSED LID	EA.	1
TYPE 1 FRAME, OPEN LID	EA.	1

BILL OF MATERIAL

Item	Description	Unit	Quantity
	SPECIAL STRUCTURE SP-6	EA.	1

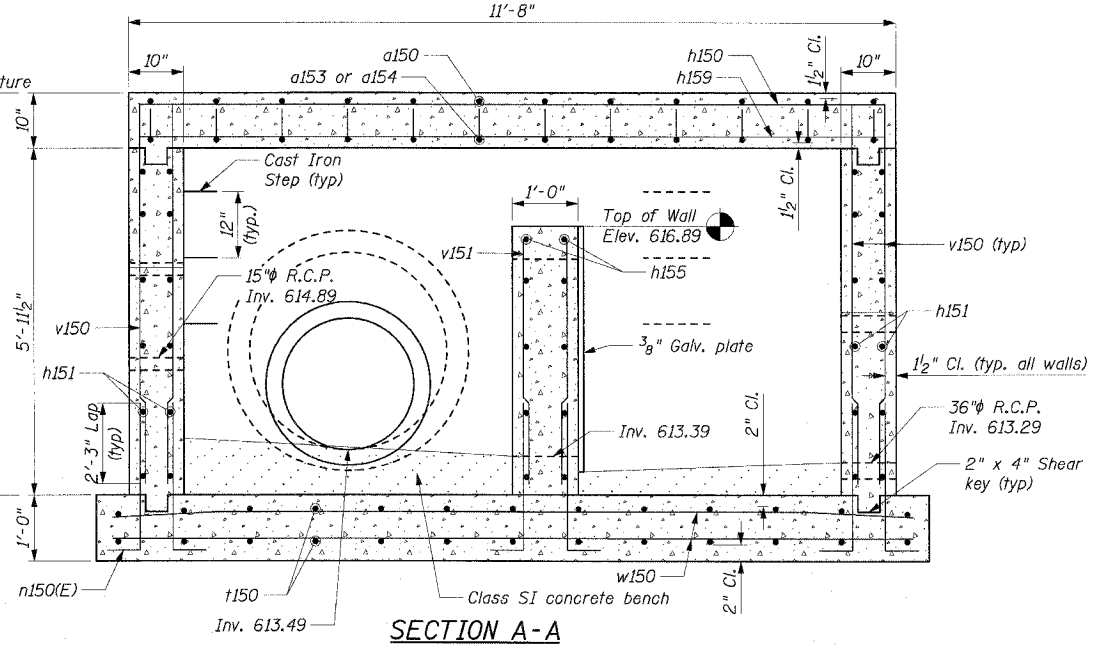
* Indicates pay item governed by a special provision

- NOTES:
- All steel plates shall conform to the requirements of AASHTO M270 grade 36.
 - Bolts, cap screws and nuts shall conform to the requirements of ASTM designation A 307 except that threaded rods, nuts and washers shall conform to AASHTO M 164.
 - All bolts, nuts, cap screws, washers and lock washers shall be galvanized according to AASHTO M 232.
 - The Contractor shall use the capsule or adhesive cartridge type anchor rods that have been previously tested and given a prior approval by the Department. The Contractor shall install these anchor rods in pre-drilled holes according to the manufacturer's recommendations and procedures. The capsule or the adhesive cartridge shall be sealed with premeasured amounts of the chemical.

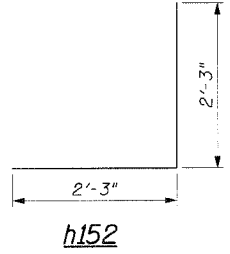
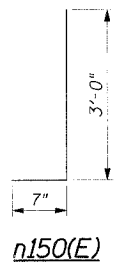
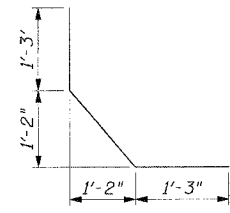
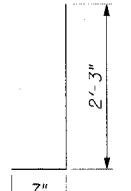
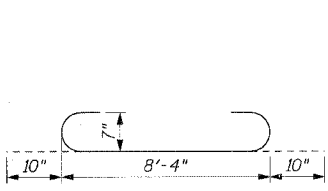
Finish Grade
Elev. 620.82

Top of Structure
Elev. 619.57

Top of Ftg.
Elev. 612.79



SECTION A-A



CMT
CRAWFORD MURPHY & TILLY, INC.
CONSULTING ENGINEERS
SPRINGFIELD, IL ■ AURORA, IL ■ ST. LOUIS, MO

REVISIONS	
NAME	DATE

ILLINOIS DEPARTMENT OF TRANSPORTATION
SPECIAL STRUCTURE SP-6
OUTLET 17
FAP RTE. 575 (U.S.30)
SECTION (B & 14) R-3
WILL COUNTY

SCALE: VERT. AS SHOWN
HORIZ. DATE: 3/17/05
DRAWN BY: GRS
CHECKED BY: ATI

I:\d0006602\draw\other\drainage_structures\structure-6a.dgn