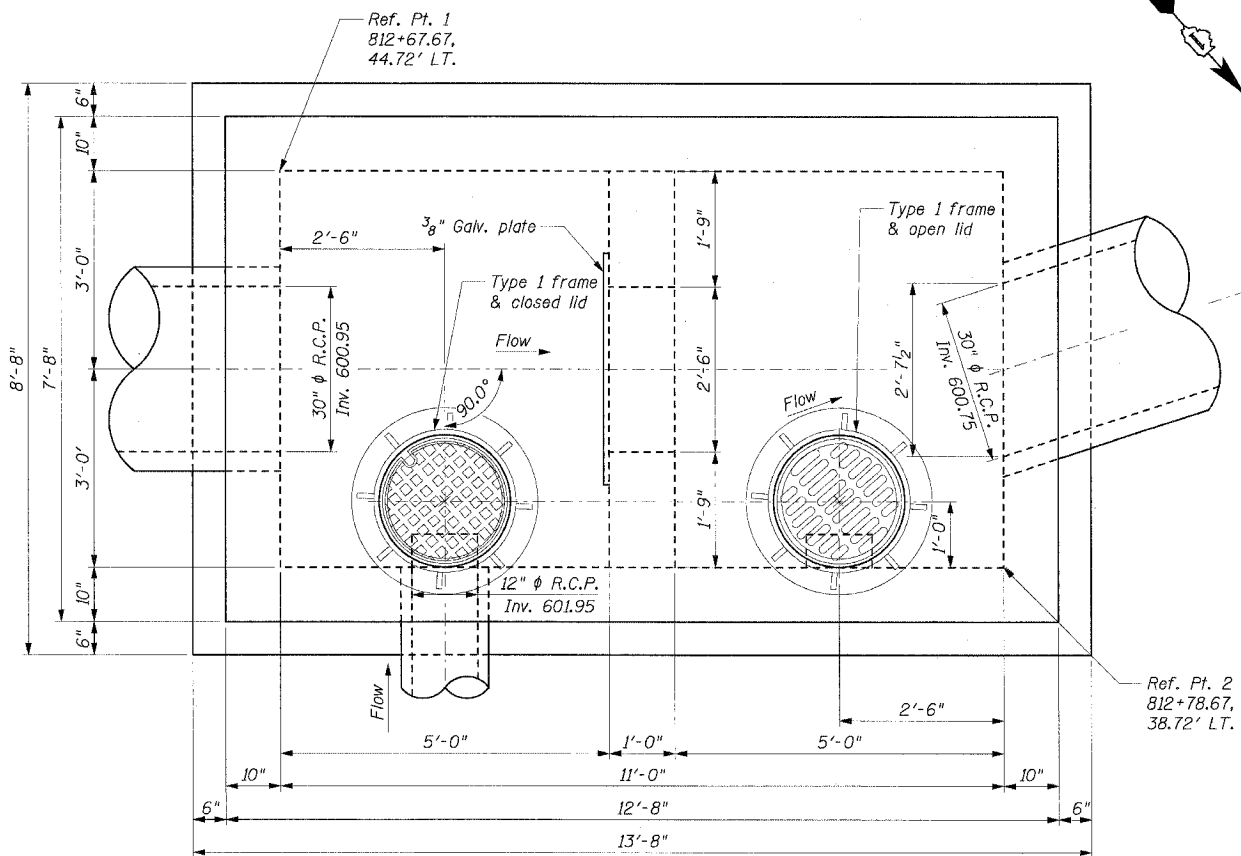
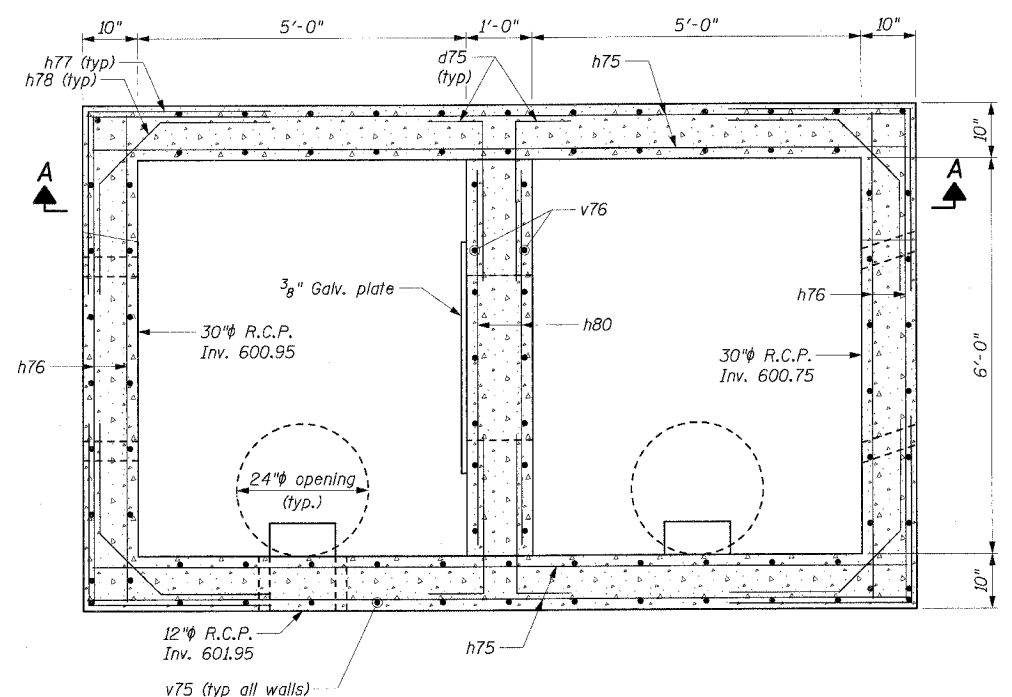


F.A.P. RTE.	SECTION	COUNTY	TOTAL SHEETS	SHEET NO.
575	(B&14) R-3	WILL	390	224
STA.	TO STA.			
FED. ROAD DIST. NO.	ILLINOIS	FED. AID PROJECT		
CONTRACT NO. 60961		Sheet 14 of 15		



PLAN VIEW
SCALE: 3/4" = 1'-0"



WALL REINFORCEMENT PLAN

BAR AND MATERIAL LIST
(FOR INFORMATION ONLY)

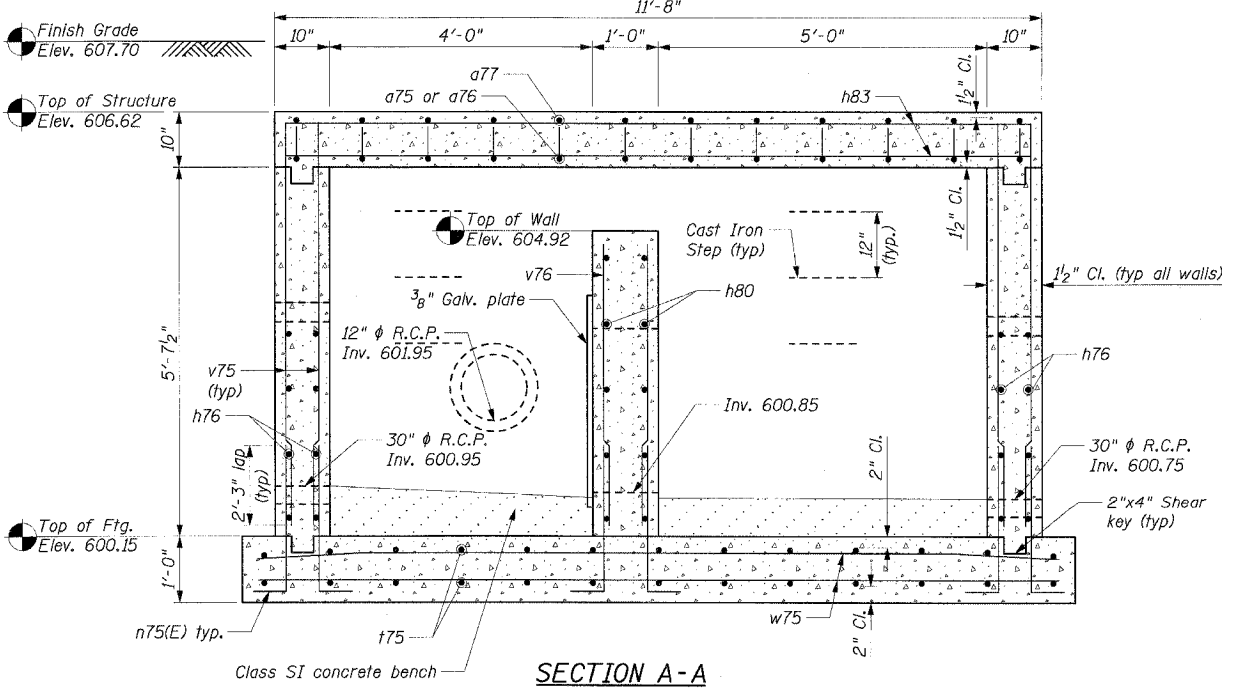
Bar	No.	Size	Length	Shape
a75	16	#6	8'-8"	U
a76	5	#6	4'-4"	U
a77	17	#5	7'-4"	U
a78	16	#6	2'-4"	U
d75	20	#5	2'-10"	U
h75	24	#5	12'-4"	U
h76	24	#5	7'-4"	U
h77	24	#5	4'-6"	U
h78	24	#5	4'-2"	U
h79	32	#5	1'-8"	U
h80	4	#5	5'-8"	U
h81	16	#5	2'-10"	U
h82	48	#5	3'-7"	U
h83	20	#5	12'-4"	U
h84	16	#5	2'-4"	U
n75(E)	90	#5	3'-7"	U
l75	28	#6	8'-4"	U
v75	74	#5	6'-2"	U
v76	12	#5	4'-5"	U
v77	4	#5	2'-4"	U
v78	12	#5	1'-9"	U
w75	18	#6	13'-4"	U

Description	Unit	Quantity
REINFORCEMENT BARS	LB.	3070
REINFORCEMENT BARS, EPOXY COATED	LB.	340
CLASS SI CONCRETE	CU. YD.	13.9
TYPE I FRAME, CLOSED LID	EA.	1
TYPE I FRAME, OPEN LID	EA.	1

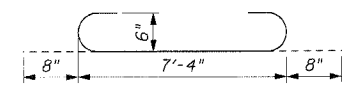
BILL OF MATERIAL

Item	Description	Unit	Quantity
	SPECIAL STRUCTURE SP-7	EA.	1

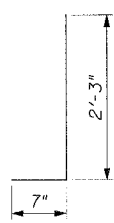
* Indicates pay item governed by a special provision



SECTION A-A



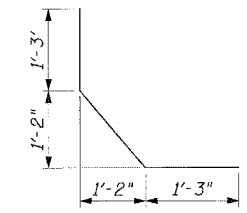
a75



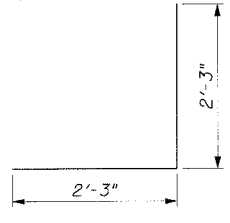
d75



n75



h78



h77

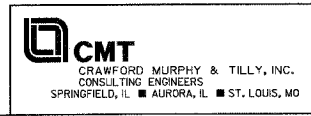
- NOTES:
- All steel plates shall conform to the requirements of AASHTO M270 grade 36.
 - Bolts, cap screws and nuts shall conform to the requirements of ASTM designation A 307 except that threaded rods, nuts and washers shall conform to AASHTO M 164.
 - All bolts, nuts, cap screws, washers and lock washers shall be galvanized according to AASHTO M 232.
 - The Contractor shall use the capsule or adhesive cartridge type anchor rods that have been previously tested and given a prior approval by the Department. The Contractor shall install these anchor rods in pre-drilled holes according to the manufacturer's recommendations and procedures. The capsule or the adhesive cartridge shall be sealed with premeasured amounts of the chemical.

REVISIONS	
NAME	DATE

ILLINOIS DEPARTMENT OF TRANSPORTATION
SPECIAL STRUCTURE SP-7
OUTLET 19
FAP RTE. 575 (U.S.30)
SECTION (B & 14) R-3
WILL COUNTY

SCALE: VERT. AS SHOWN
HORIZ. 1/2"
DATE: 3/1/05

DRAWN BY: GRS
CHECKED BY: ATI



I:\d0006602\draw\other\drainage_structures\structure-7a.dgn