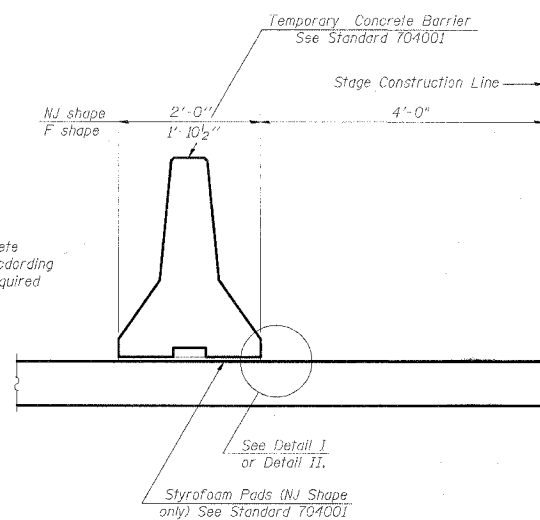


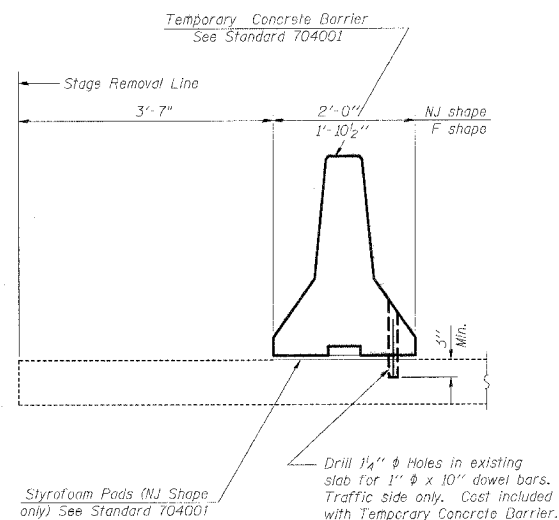
F.A.P. RTE.	SECTION	COUNTY	TOTAL SHEETS	SHEET NO.
575	(B&14) R-3	WILL	390	232
STA.		TO STA.		
FED. ROAD DIST. NO.	ILLINOIS	FED. AID PROJECT		
CONTRACT NO. 60961				

Sheet 7 of 8

When "A" is 5" or less, the temporary concrete barrier shall be Anchored to the new slab according to Detail I or Detail II. No anchorage is required when "A" is greater than 6".

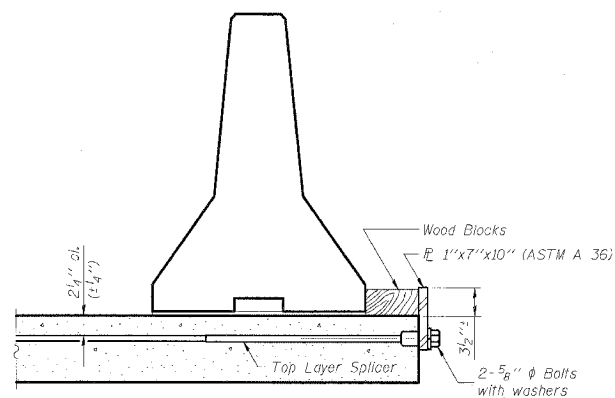


NEW SLAB



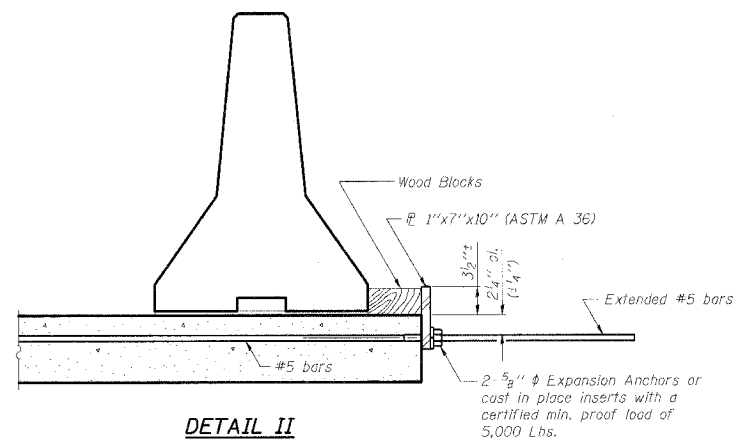
EXISTING SLAB

SECTIONS THRU SLAB



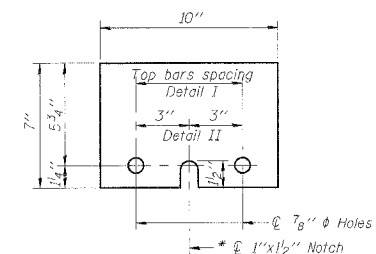
DETAIL I

The 1"x7"x10" Plate shall not be removed until Stage II Construction forms and reinforcement bars are in place.



DETAIL II

The 1"x7"x10" Plate shall not be removed until Stage II Construction forms and all reinforcement bars are in place and the concrete is ready to be placed.



1" x 7" x 10"

\* Required only with Detail II

NOTES

- Detail I - With Bar Splicer or Couplers: Connect one (1) 1"x7"x10" steel plate to the top layer of couplers with 2-5/8" diameter bolts screwed to coupler at approximate center of each barrier panel.
  - Detail II - With Extended Reinforcement Bars: Connect one (1) 1"x7"x10" steel plate to the concrete slab with 2-5/8" diameter Expansion Anchors or cast in place Inserts spaced between the top layer of reinforcement at approximate center of each barrier panel.
- Cost of anchorage is included with Temporary Concrete Barrier.

L:\DOT\00060602\draw\other\out\temp barrier detail.dgn

**CMT**  
CRAWFORD MURPHY & TILLY, INC.  
CONSULTING ENGINEERS  
SPRINGFIELD, IL ■ ALTON, IL ■ ST. LOUIS, MO

REVISIONS	
NAME	DATE

ILLINOIS DEPARTMENT OF TRANSPORTATION  
**TEMPORARY CONCRETE BARRIER FOR STAGE CONSTRUCTION**  
FAP RTE. 575 (U.S.30)  
U.S. ROUTE 30 OVER ROCK RUN CREEK  
SECTION (B & 14) R-3 STA. 720+97.50  
WILL COUNTY  
S.N. 099-C002

SCALE: VERT. NONE  
HORIZ. NONE  
DATE: 3/1/05

DRAWN BY: GRS  
CHECKED BY: ATI