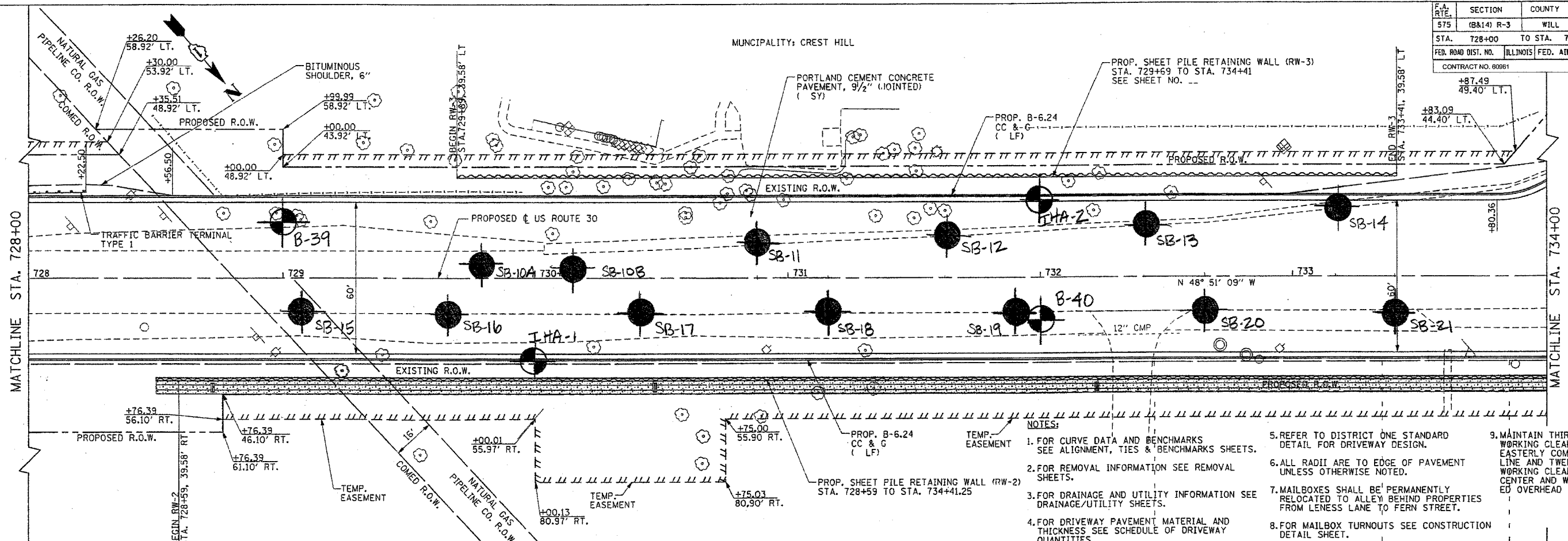
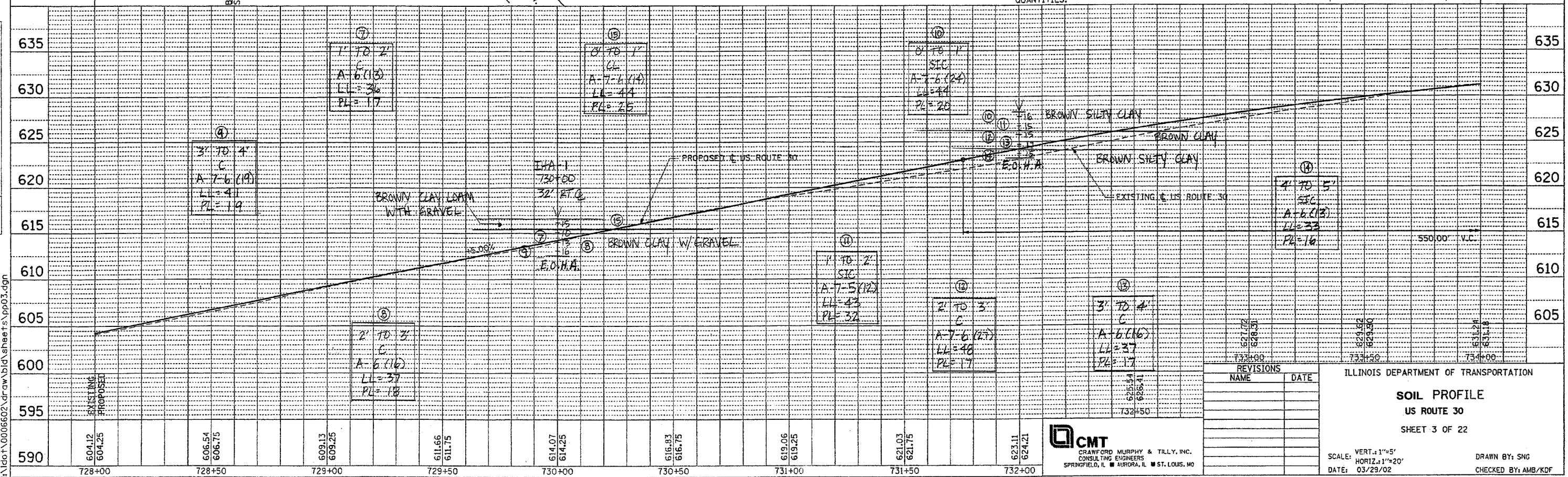


F.A. RTE.	SECTION	COUNTY	TOTAL SHEETS	SHEET NO.
575	(B&I) R-3	WILL	390	387
STA. 728+00		TO STA. 734+00		
FED. ROAD DIST. NO.		ILLINOIS FED. AID PROJECT		
CONTRACT NO. 60861				

MUNICIPALITY: CREST HILL



- NOTES:
- FOR CURVE DATA AND BENCHMARKS SEE ALIGNMENT, TIES & BENCHMARKS SHEETS.
  - FOR REMOVAL INFORMATION SEE REMOVAL SHEETS.
  - FOR DRAINAGE AND UTILITY INFORMATION SEE DRAINAGE/UTILITY SHEETS.
  - FOR DRIVEWAY PAVEMENT MATERIAL AND THICKNESS SEE SCHEDULE OF DRIVEWAY QUANTITIES.
  - REFER TO DISTRICT ONE STANDARD DETAIL FOR DRIVEWAY DESIGN.
  - ALL RADII ARE TO EDGE OF PAVEMENT UNLESS OTHERWISE NOTED.
  - MAILBOXES SHALL BE PERMANENTLY RELOCATED TO ALLEY BEHIND PROPERTIES FROM LENSSE LANE TO FERN STREET.
  - FOR MAILBOX TURNOUTS SEE CONSTRUCTION DETAIL SHEET.
  - MAINTAIN THIRTY (30) FOOT WORKING CLEARANCE FROM EASTERLY COM ED OVERHEAD LINE AND TWENTY (20) FOOT WORKING CLEARANCE FROM CENTER AND WESTERLY COM ED OVERHEAD LINES.



REVISIONS	
NAME	DATE

ILLINOIS DEPARTMENT OF TRANSPORTATION

**SOIL PROFILE**  
US ROUTE 30  
SHEET 3 OF 22

SCALE: VERT. 1"=5'  
HORIZ. 1"=20'  
DATE: 03/29/02

DRAWN BY: SNG  
CHECKED BY: AMB/KDF

**CMT**  
CRAWFORD MURPHY & TILLY, INC.  
CONSULTING ENGINEERS  
SPRINGFIELD, IL ■ AURORA, IL ■ ST. LOUIS, MO

I:\dot\0006602\draw\bl\sheet3.dgn