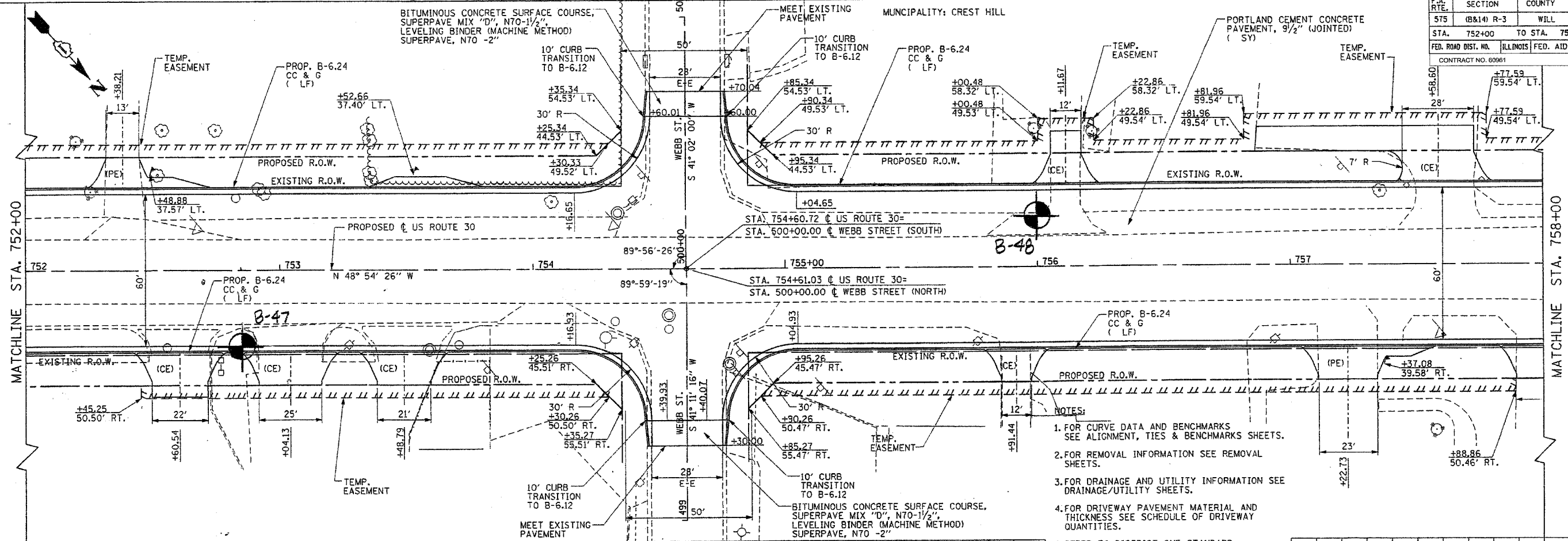
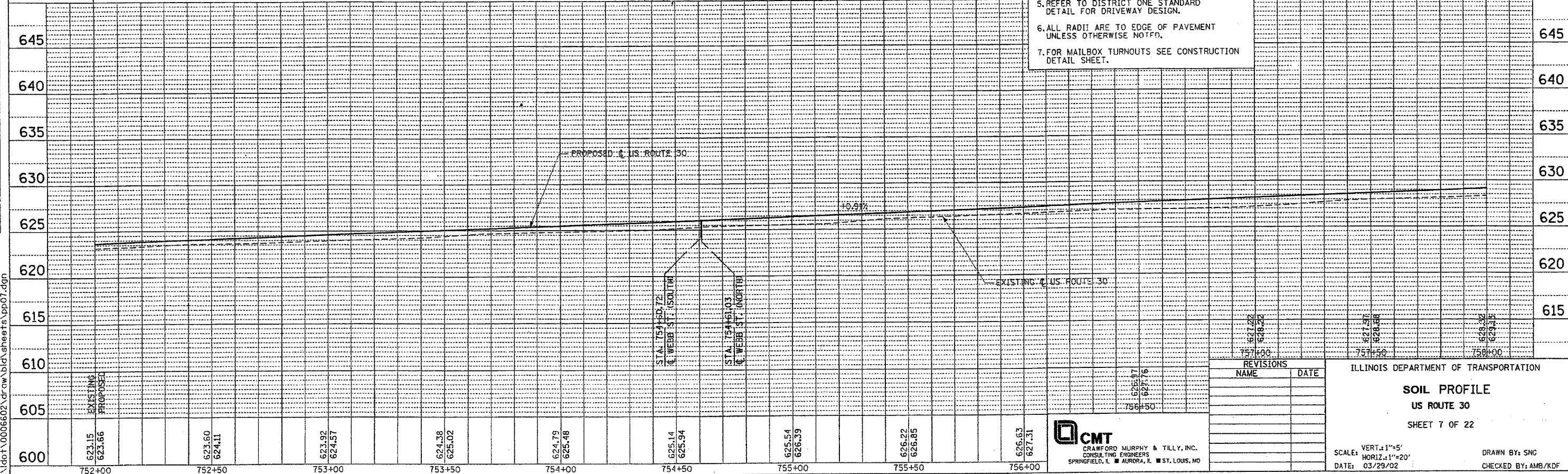


F.A. RTE.	SECTION	COUNTY	TOTAL SHEETS	SHEET NO.
575	(B&I) R-3	WILL	390	371
STA. 752+00		TO STA. 758+00		
FED. ROAD DIST. NO.		ILLINOIS FED. AID PROJECT		
CONTRACT NO. 60961				



- NOTES:
1. FOR CURVE DATA AND BENCHMARKS SEE ALIGNMENT, TIES & BENCHMARKS SHEETS.
  2. FOR REMOVAL INFORMATION SEE REMOVAL SHEETS.
  3. FOR DRAINAGE AND UTILITY INFORMATION SEE DRAINAGE/UTILITY SHEETS.
  4. FOR DRIVEWAY PAVEMENT MATERIAL AND THICKNESS SEE SCHEDULE OF DRIVEWAY QUANTITIES.
  5. REFER TO DISTRICT ONE STANDARD DETAIL FOR DRIVEWAY DESIGN.
  6. ALL RADII ARE TO EDGE OF PAVEMENT UNLESS OTHERWISE NOTED.
  7. FOR MAILBOX TURNOUTS SEE CONSTRUCTION DETAIL SHEET.



REVISIONS	
NAME	DATE

ILLINOIS DEPARTMENT OF TRANSPORTATION  
**SOIL PROFILE**  
 US ROUTE 30  
 SHEET 7 OF 22

SCALE: VERT. 1"=5'  
 HORIZ. 1"=20'  
 DATE: 03/29/02

DRAWN BY: SNG  
 CHECKED BY: AMB/KDF

**CMT**  
 GRANFORD MURPHY & TILLY, INC.  
 CONSULTING ENGINEERS  
 SPRINGFIELD, IL ■ AURORA, IL ■ ST. LOUIS, MO

I:\dot\00066602\dr\aw\bid\sheet\ts\pp07.dgn