

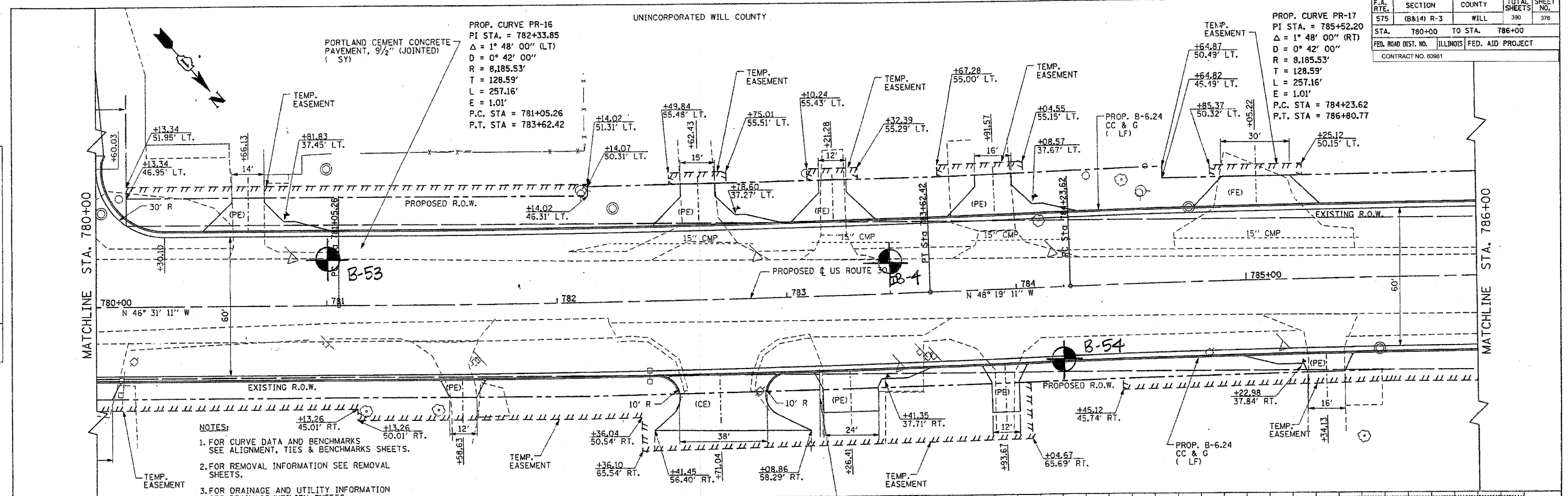
F.A. RTE.	SECTION	COUNTY	TOTAL SHEETS	SHEET NO.
575	(B&I) R-3	WILL	390	376
STA.	780+00	TO STA.	786+00	
FED. ROAD DIST. NO.	ILLINOIS	FED. AID PROJECT		
CONTRACT NO. 60961				

PROP. CURVE PR-16  
 PI STA. = 782+33.85  
 $\Delta = 1^\circ 48' 00''$  (LT)  
 $D = 0^\circ 42' 00''$   
 $R = 8,185.53'$   
 $T = 128.59'$   
 $L = 257.16'$   
 $E = 1.01'$   
 P.C. STA = 781+05.26  
 P.T. STA = 783+62.42

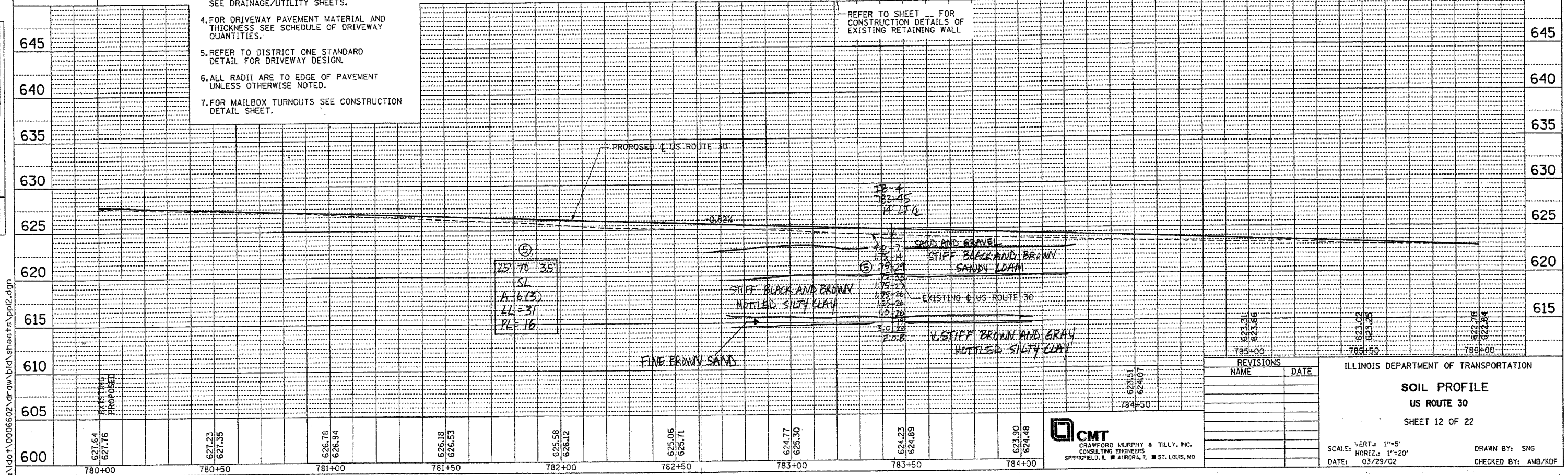
PROP. CURVE PR-17  
 PI STA. = 785+52.20  
 $\Delta = 1^\circ 48' 00''$  (RT)  
 $D = 0^\circ 42' 00''$   
 $R = 8,185.53'$   
 $T = 128.59'$   
 $L = 257.16'$   
 $E = 1.01'$   
 P.C. STA = 784+23.62  
 P.T. STA = 786+80.77

REVISIONS  
 DATE  
 BY  
 CHECKED  
 DATE  
 BY  
 DRAWN  
 DATE  
 BY

REVISIONS  
 DATE  
 BY  
 CHECKED  
 DATE  
 BY  
 DRAWN  
 DATE  
 BY



- NOTES:
- FOR CURVE DATA AND BENCHMARKS SEE ALIGNMENT, TIES & BENCHMARKS SHEETS.
  - FOR REMOVAL INFORMATION SEE REMOVAL SHEETS.
  - FOR DRAINAGE AND UTILITY INFORMATION SEE DRAINAGE/UTILITY SHEETS.
  - FOR DRIVEWAY PAVEMENT MATERIAL AND THICKNESS SEE SCHEDULE OF DRIVEWAY QUANTITIES.
  - REFER TO DISTRICT ONE STANDARD DETAIL FOR DRIVEWAY DESIGN.
  - ALL RADII ARE TO EDGE OF PAVEMENT UNLESS OTHERWISE NOTED.
  - FOR MAILBOX TURNOUTS SEE CONSTRUCTION DETAIL SHEET.



REVISIONS		ILLINOIS DEPARTMENT OF TRANSPORTATION	
NAME	DATE		
		<b>SOIL PROFILE</b> <b>US ROUTE 30</b> SHEET 12 OF 22	

SCALE: VERT. 1"=5'  
 HORIZ. 1"=20'  
 DATE: 03/29/02  
 DRAWN BY: SNG  
 CHECKED BY: AMB/KDF

**CMT**  
 CRAWFORD MURPHY & TILLY, INC.  
 CONSULTING ENGINEERS  
 SPRINGFIELD, IL ■ AURORA, IL ■ ST. LOUIS, MO

I:\dof\0006602\draw\bid\sheet\sp12.dgn