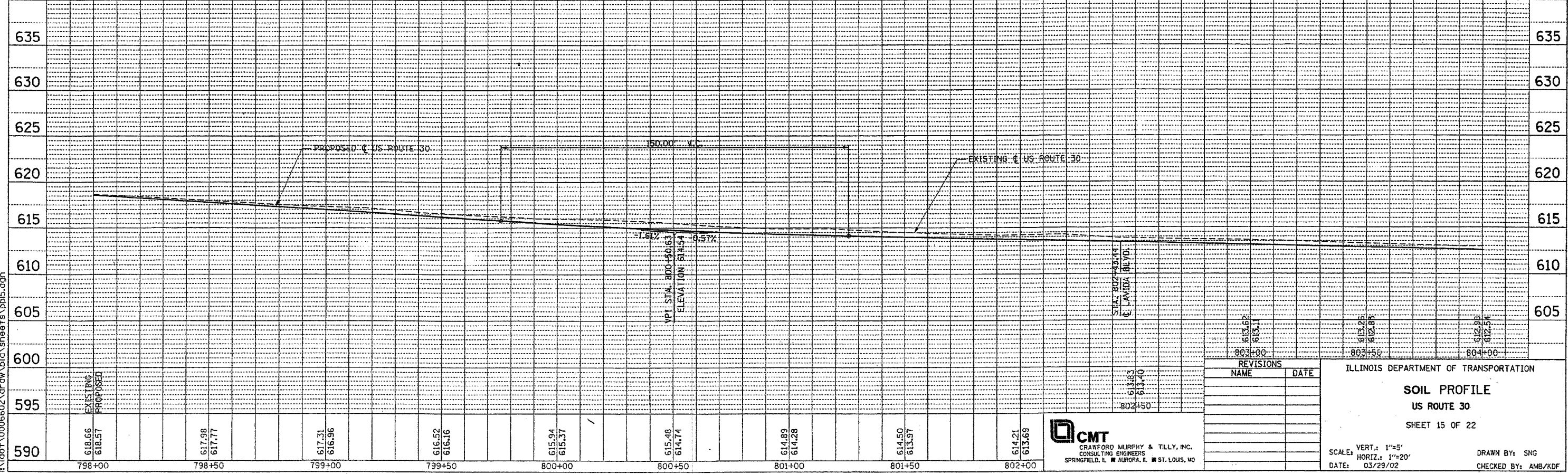
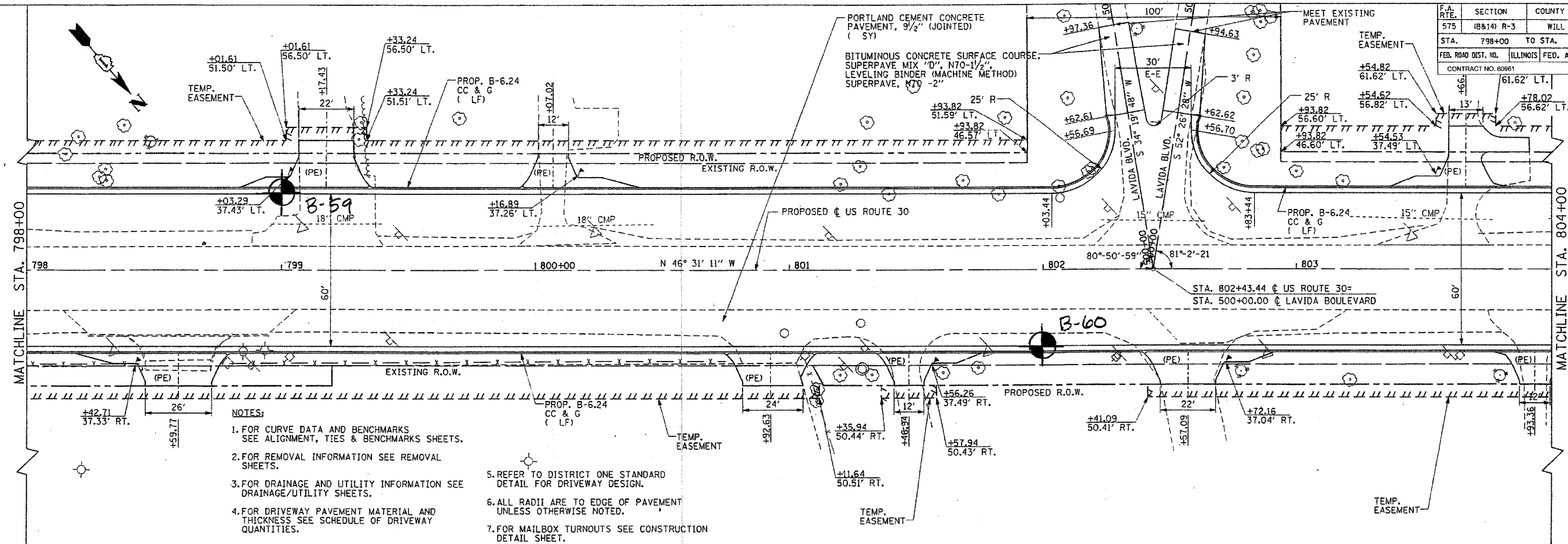


F.A. RTE.	SECTION	COUNTY	TOTAL SHEETS	SHEET NO.
575	(B&I) R-3	WILL	390	379
STA. 798+00 TO STA. 804+00		FED. ROAD DIST. NO. ILLINOIS FED. AID PROJECT		
CONTRACT NO. 80961				



REVISIONS	
NAME	DATE

ILLINOIS DEPARTMENT OF TRANSPORTATION

SOIL PROFILE
 US ROUTE 30
 SHEET 15 OF 22

SCALE: VERT.: 1"=5'
 HORIZ.: 1"=20'
 DATE: 03/29/02

DRAWN BY: SNG
 CHECKED BY: AMB/KDF

CMT
 CRAWFORD MURPHY & TILLY, INC.
 CONSULTING ENGINEERS
 SPRINGFIELD, IL AURORA, IL ST. LOUIS, MO

PLAN
 SURVEYED
 ALIGNED
 CHECKED
 NOTE BOOK NO.
 DATE FILED

PROF. ILL.
 DRAWING
 CHECKED
 NOTE BOOK NO.
 DATE FILED

I:\dot\0006602\draw\bid\sheet5.appl5.dgn