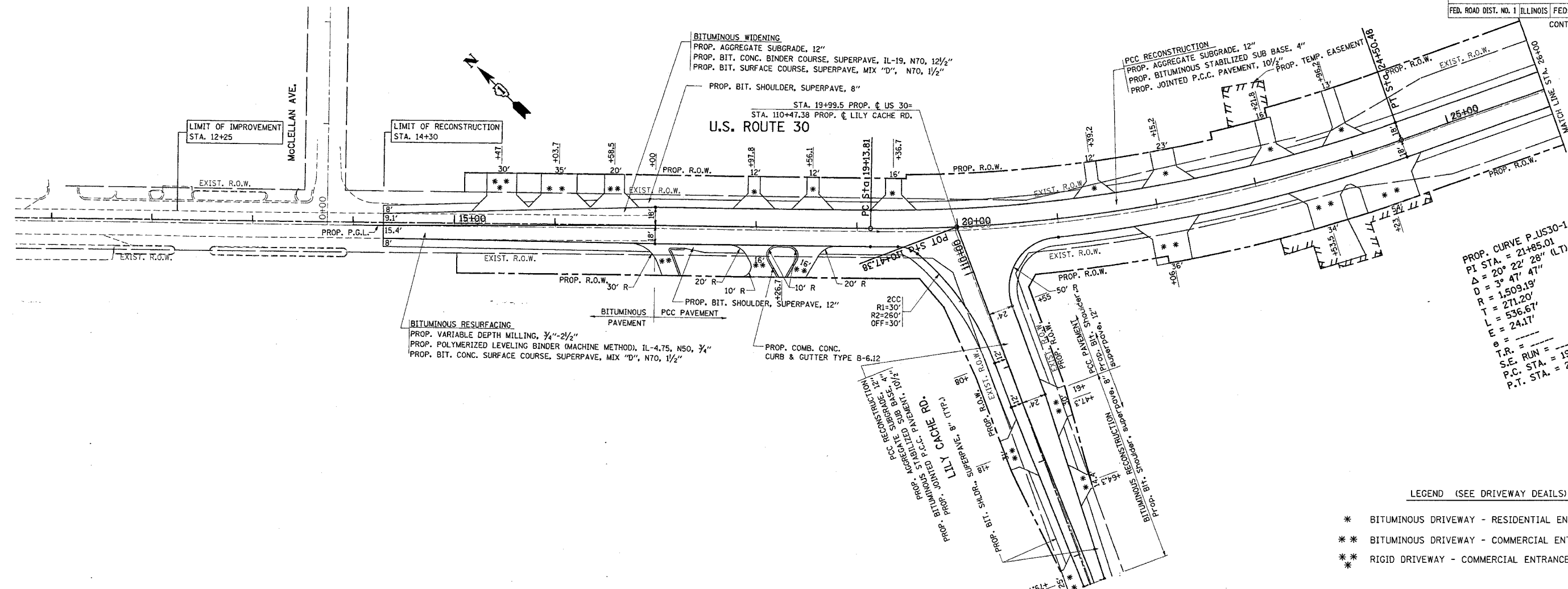


REF-pp01  
REF-pr01

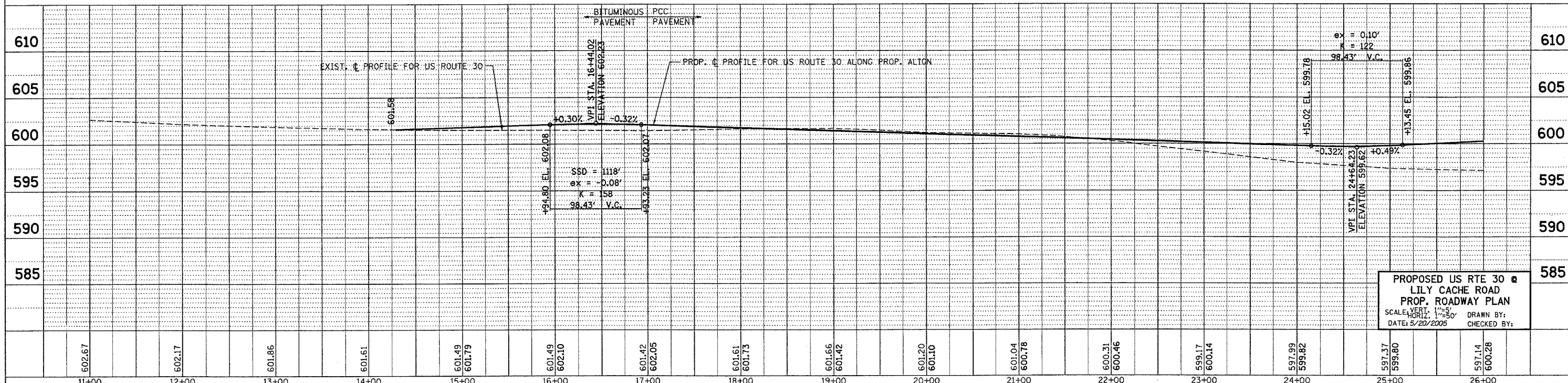
F.A.P. RTE.	SECTION	COUNTY	TOTAL SHEETS	SHEET NO.
575	14-B-R-1&15N-3	WILL	143	17
STA.	TO STA.			
FED. ROAD DIST. NO. 1	ILLINOIS	FED. AID PROJECT		
CONTRACT NO. 62098				



PROP. CURVE P.U530-1  
 PI STA. = 21+85.01  
 $\Delta = 20^\circ 22' 47''$   
 $D = 3^\circ 47' 47''$   
 $R = 1,509.19'$   
 $T = 271.20'$   
 $L = 536.67'$   
 $E = 24.17'$   
 $\theta = \dots$   
 $T.R. = \dots$   
 $S.E. RUN = 19+13.81$   
 $P.C. STA. = 24+50.48$   
 $P.T. STA. = 24+50.48$

LEGEND (SEE DRIVEWAY DETAILS)

- \* BITUMINOUS DRIVEWAY - RESIDENTIAL ENTRANCE
- \*\* BITUMINOUS DRIVEWAY - COMMERCIAL ENTRANCE
- \*\* RIGID DRIVEWAY - COMMERCIAL ENTRANCE



PROPOSED US RTE 30  
 LILY CACHE ROAD  
 PROP. ROADWAY PLAN  
 SCALE: VERT. 1"=50'  
 DATE: 5/20/2005  
 DRAWN BY: \_\_\_\_\_  
 CHECKED BY: \_\_\_\_\_