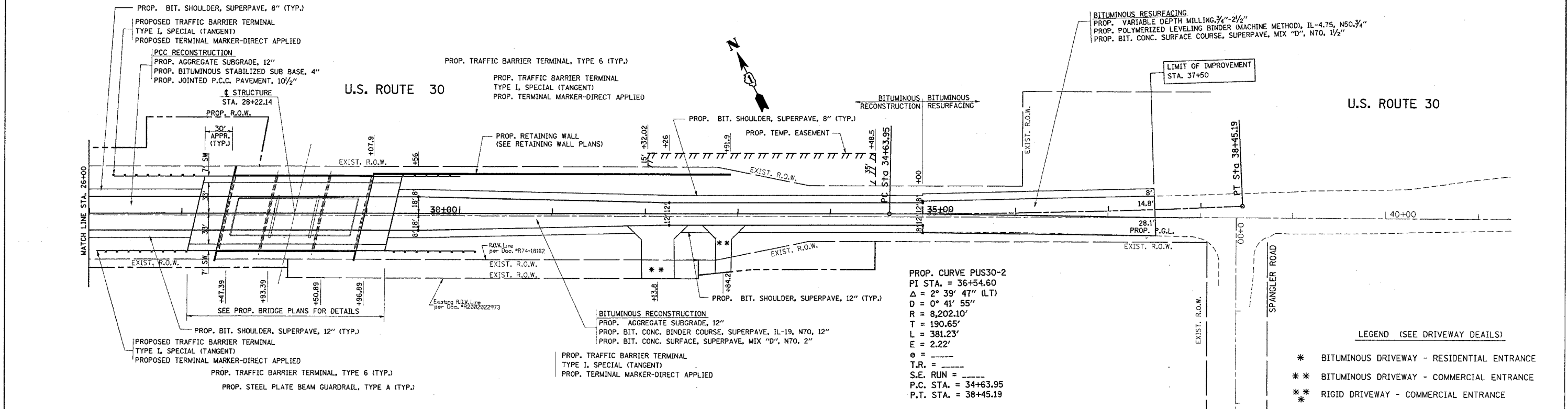


\*REF-PR02  
\*REF-PR02

F.A.P. RTE.	SECTION	COUNTY	TOTAL SHEETS	SHEET NO.
575	14-B-R-1&15N-3	WILL	143	18
STA. TO STA.				
FED. ROAD DIST. NO. 1		ILLINOIS	FED. AID PROJECT	
CONTRACT NO. 62098				



PROP. CURVE PUS30-2  
 PI STA. = 36+54.60  
 $\Delta = 2^\circ 39' 47''$  (LT)  
 $D = 0^\circ 41' 55''$   
 $R = 8,202.10'$   
 $T = 190.65'$   
 $L = 381.23'$   
 $E = 2.22'$   
 $e =$   
 $T.R. =$   
 $S.E. RUN =$   
 $P.C. STA. = 34+63.95$   
 $P.T. STA. = 38+45.19$

- LEGEND (SEE DRIVEWAY DETAILS)
- \* BITUMINOUS DRIVEWAY - RESIDENTIAL ENTRANCE
  - \*\* BITUMINOUS DRIVEWAY - COMMERCIAL ENTRANCE
  - \*\*\* RIGID DRIVEWAY - COMMERCIAL ENTRANCE

