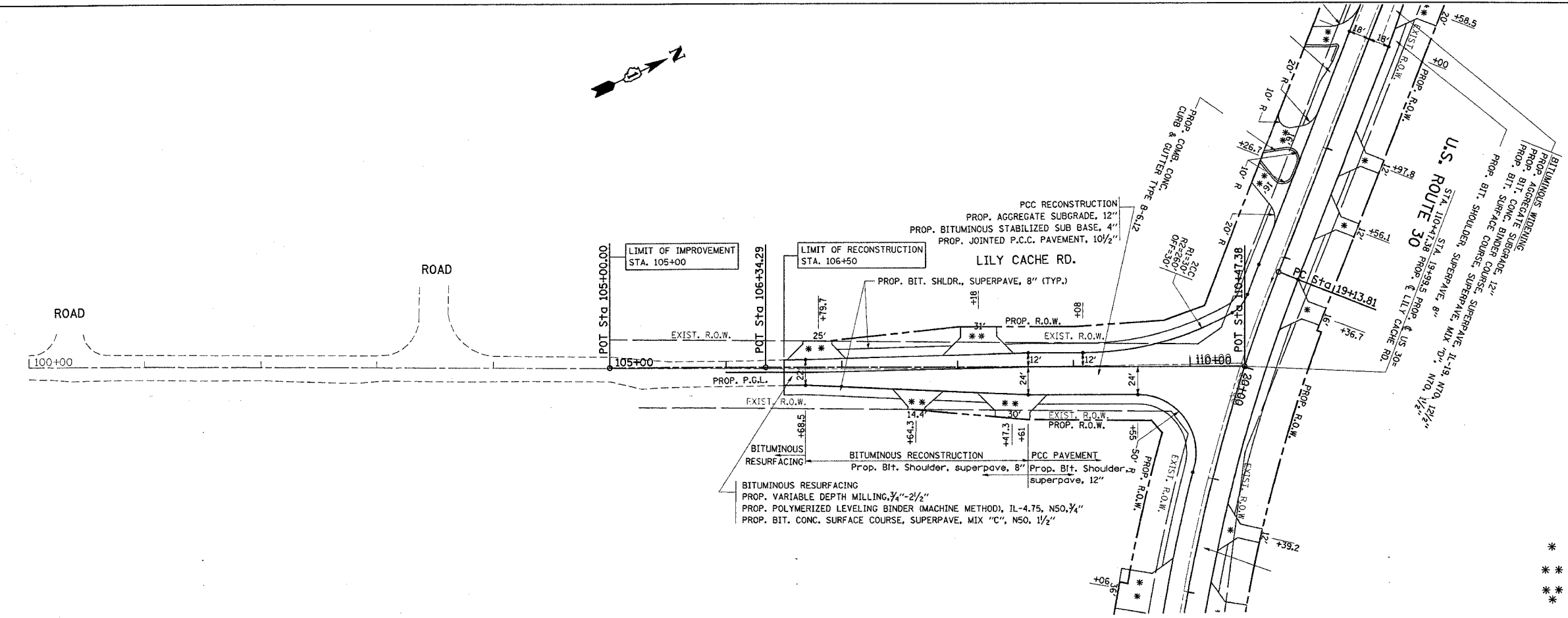
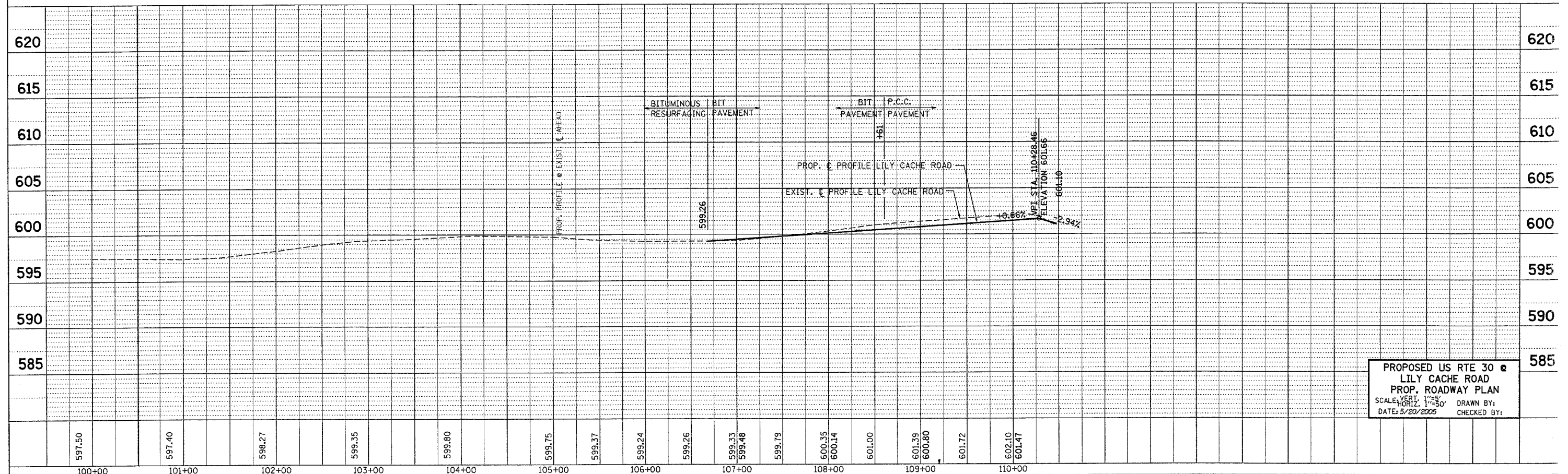


\*REF-pp03  
\*REF-pr03

F.A.P. RTE.	SECTION	COUNTY	TOTAL SHEETS	SHEET NO.
ST5	14-B-R-1&15N-3	WILL	143	19
STA.	TO STA.			
FED. ROAD DIST. NO. 1		ILLINOIS	FED. AID PROJECT	
CONTRACT NO. 62098				



- LEGEND (SEE DRIVEWAY DETAILS)
- \* BITUMINOUS DRIVEWAY - RESIDENTIAL ENTRANCE
  - \*\* BITUMINOUS DRIVEWAY - COMMERCIAL ENTRANCE
  - \*\*\* RIGID DRIVEWAY - COMMERCIAL ENTRANCE



PROPOSED US RTE 30 @  
LILY CACHE ROAD  
PROP. ROADWAY PLAN  
SCALE: VERT. 1"=5'  
HORIZ. 1"=50'  
DATE: 5/20/2005  
DRAWN BY:  
CHECKED BY: