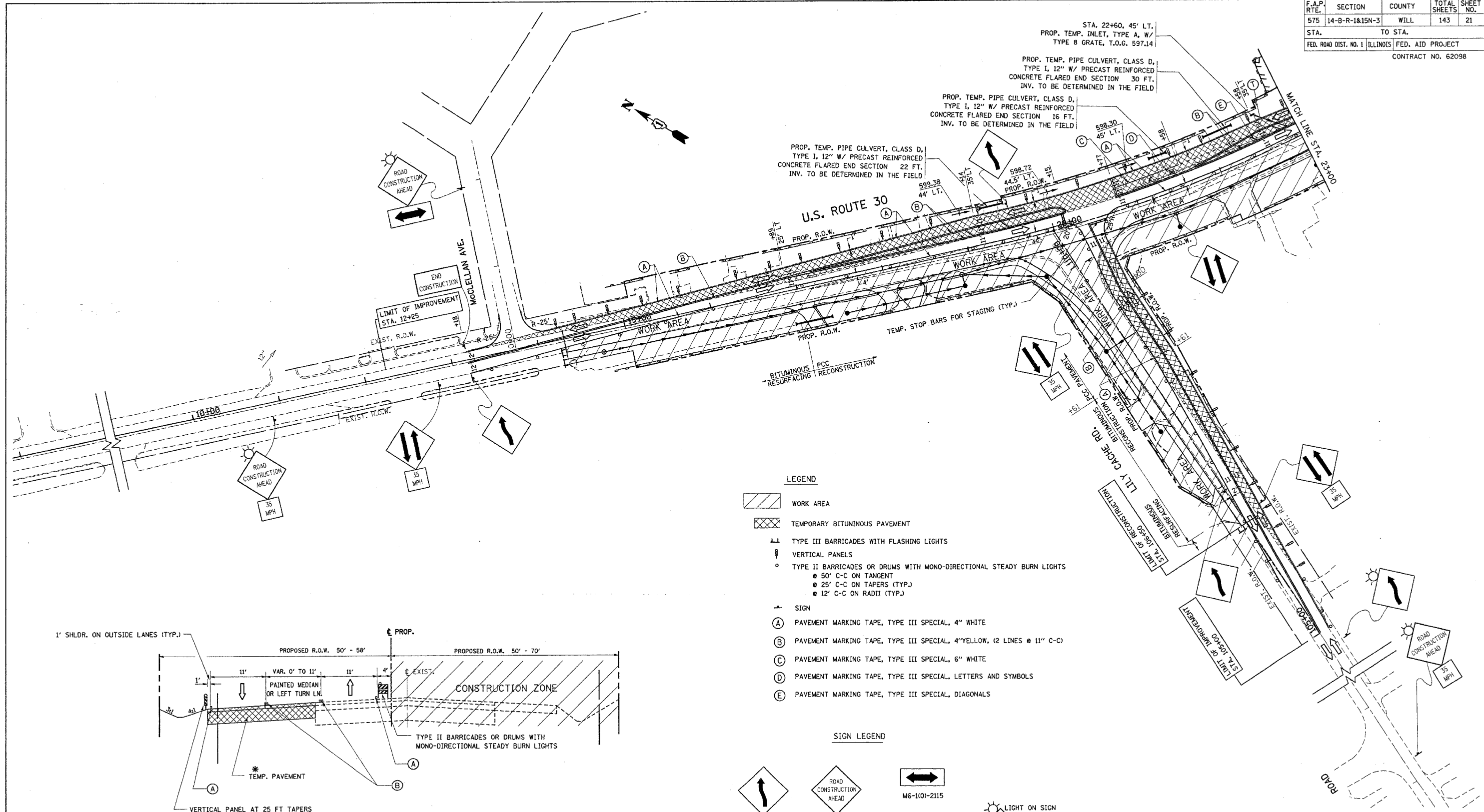
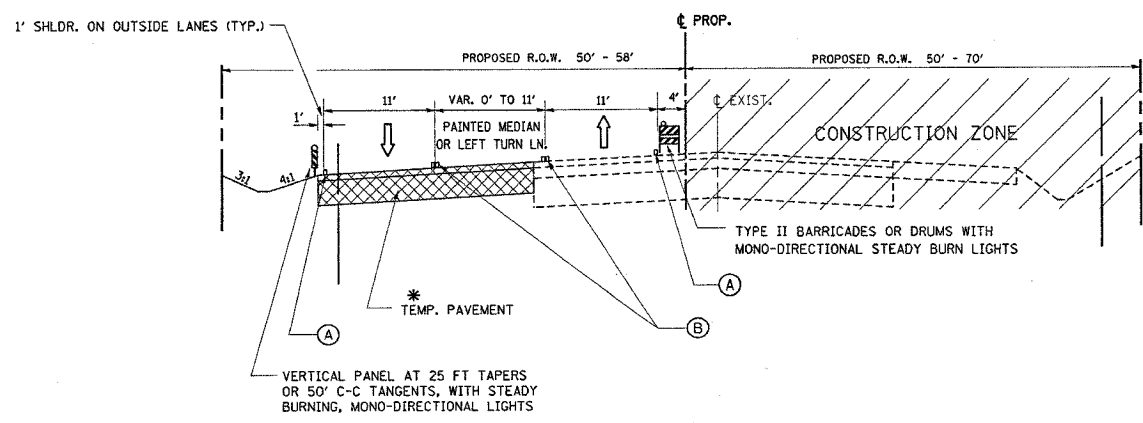


F.A.P. RTE.	SECTION	COUNTY	TOTAL SHEETS	SHEET NO.
575	14-B-R-1&15N-3	WILL.	143	21
STA.		TO STA.		
FED. ROAD DIST. NO. 1		ILLINOIS	FED. AID PROJECT	
CONTRACT NO. 62098				



- LEGEND**
- WORK AREA
  - TEMPORARY BITUMINOUS PAVEMENT
  - TYPE III BARRICADES WITH FLASHING LIGHTS
  - VERTICAL PANELS
  - TYPE II BARRICADES OR DRUMS WITH MONO-DIRECTIONAL STEADY BURN LIGHTS
    - 50' C-C ON TANGENT
    - 25' C-C ON TAPERS (TYP.)
    - 12' C-C ON RADII (TYP.)
  - SIGN
    - (A) PAVEMENT MARKING TAPE, TYPE III SPECIAL, 4" WHITE
    - (B) PAVEMENT MARKING TAPE, TYPE III SPECIAL, 4" YELLOW, (2 LINES @ 11" C-C)
    - (C) PAVEMENT MARKING TAPE, TYPE III SPECIAL, 6" WHITE
    - (D) PAVEMENT MARKING TAPE, TYPE III SPECIAL, LETTERS AND SYMBOLS
    - (E) PAVEMENT MARKING TAPE, TYPE III SPECIAL, DIAGONALS

- SIGN LEGEND**
- W1-4R(1)-48
  - W20-1(1)-48
  - M6-1(1)-2115
  - G20-2(1)6024
  - W1-4R(1)-48
  - W6-3(1)-48
  - W13-1(1)-2424
  - LIGHT ON SIGN



\* NOTE:  
 TEMPORARY PAVEMENT SHALL CONSIST OF  
 1 3/4" BITUMINOUS CONCRETE SURFACE COURSE, SUPERPAVE, MIX. D, N50  
 10 1/4" BITUMINOUS BASE COURSE, SUPERPAVE

STAGE I TYPICAL SECTION (U.S. 30)

REVISIONS	
NAME	DATE

ILLINOIS DEPARTMENT OF TRANSPORTATION  
 US RTE 30 @ LILY CACHE RD.  
 SUGGESTED STAGING AND  
 TRAFFIC CONTROL PLAN  
 STAGE I

SCALE: VERT. \_\_\_\_\_  
 HORIZ. \_\_\_\_\_  
 DATE 5/20/2005

DRAWN BY \_\_\_\_\_  
 CHECKED BY \_\_\_\_\_