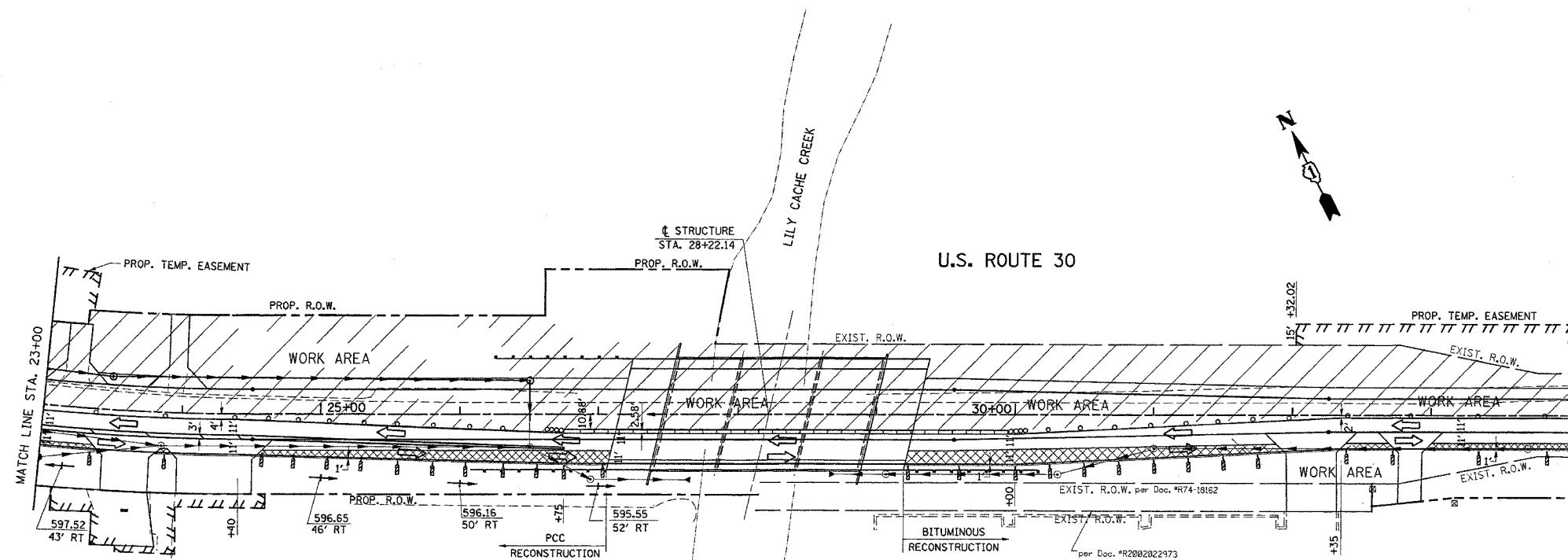


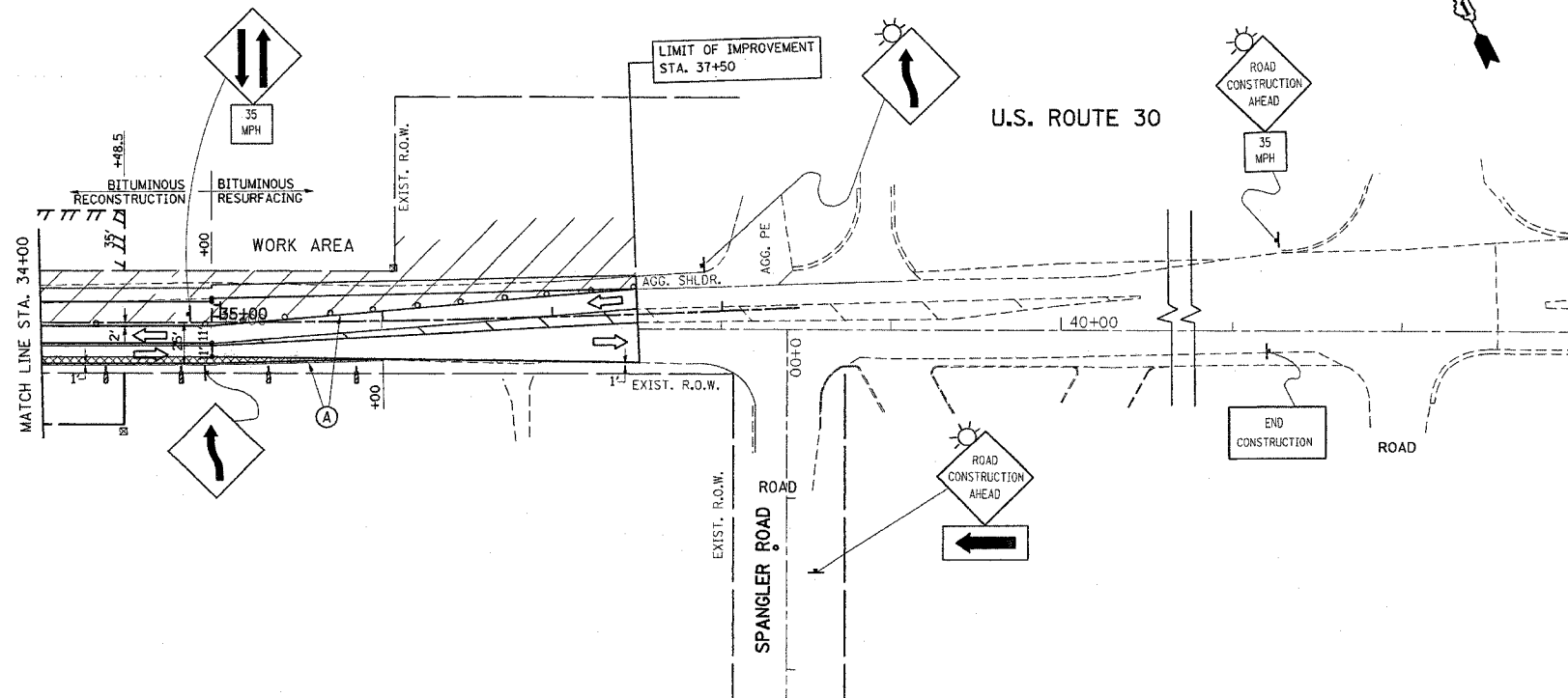
F.A.P. RTE.	SECTION	COUNTY	TOTAL SHEETS	SHEET NO.
575	14-B-R-1&15N-3	WILL	143	26
STA.		TO STA.		
FED. ROAD DIST. NO. 1		ILLINOIS	FED. AID PROJECT	
CONTRACT NO. 62098				



- LEGEND**
- WORK AREA
 - TEMPORARY BITUMINOUS PAVEMENT
 - TYPE III BARRICADES WITH FLASHING LIGHTS
 - VERTICAL PANELS
 - TYPE II BARRICADES OR DRUMS WITH MONO-DIRECTIONAL STEADY BURN LIGHTS
 - 50' C-C ON TANGENT
 - 25' C-C ON TAPERS (TYP.)
 - 12' C-C ON RADII (TYP.)
 - SIGN
 - PAVEMENT MARKING TAPE, TYPE III SPECIAL, 4" WHITE
 - PAVEMENT MARKING TAPE, TYPE III SPECIAL, 4" YELLOW, (2 LINES @ 11" C-C)
 - PAVEMENT MARKING TAPE, TYPE III SPECIAL, 6" WHITE
 - PAVEMENT MARKING TAPE, TYPE III SPECIAL, LETTERS AND SYMBOLS
 - PAVEMENT MARKING TAPE, TYPE III SPECIAL, DIAGONALS

SIGN LEGEND

- W1-4L(O)-48
- W1-4R(O)-48
- W20-1(O)-48
- W6-3(O)-48
- M6-1(O)-2115
- END CONSTRUCTION G20-2(O)6024
- 35 MPH W13-1(O)-2424
- LIGHT ON SIGN



REVISIONS	
NAME	DATE

ILLINOIS DEPARTMENT OF TRANSPORTATION
 US RTE 30 @ LILY CACHE RD.
 SUGGESTED STAGING AND
 TRAFFIC CONTROL PLAN
 STAGE II

SCALE: VERT. DRAWN BY
 HORIZ. CHECKED BY
 DATE 5/20/2005