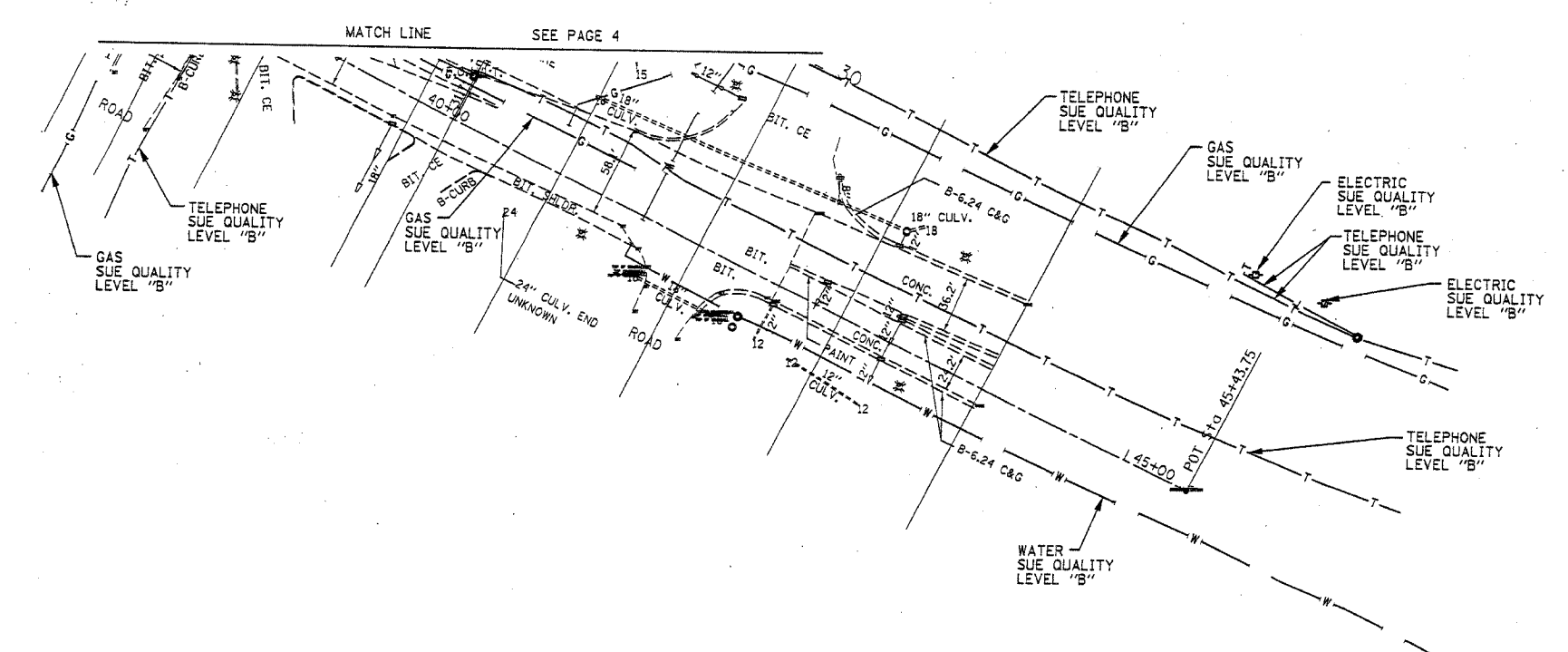
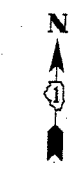


F.A. RTE.	SECTION	COUNTY	TOTAL SHEETS	SHEET NO.
	14-B-R-1 & 15H-3	WILL	143	37
STA.	TO STA.			
FED. ROAD DIST. NO.	ILLINOIS	FED. AID PROJECT		
CONTRACT NO. 62098				



FOR INFORMATION ONLY


PLEASE NOTE: SBC WILL NOT PROVIDE TBE AS-BUILT DRAWINGS FOR REVIEW PURPOSES ONLY.

TBE GROUP, INC.
 CIVIL ENGINEERING • TRANSPORTATION • ENVIRONMENTAL
 • PLANNING • UTILITY ENGINEERING/LOCATING
 SOUTHERN REGION: FL, GA, SC, NC
 NORTHERN REGION: IL, IN, MI, OH, MD, NJ, NY
 PA, VA, CANADA
 WESTERN REGION: AZ, NV, NM, TX, CA, OR, UT, WA

IL09500202
 TBE SUE PAGE NO: 5 of 5
 Checked by: *[Signature]*
 SUE Quality Level "A" : Test Holes
 SUE Quality Level "B" : Designating

— T — T —	TELEPHONE
— W — W —	WATER
— G — G —	GAS
— CTV — CTV —	CABLE TELEVISION
— FO — FO —	FIBER OPTIC
— E — E —	ELECTRIC
⊙	TEST HOLE

Utilities shown on these plans as depicted in the legend have been investigated by TBE Group, Inc in accordance with SUE Industry Standards. All other information shown has been provided to TBE Group, Inc by others.


 205 W. WACKER DRIVE
 SUITE 1020
 CHICAGO, IL 60606
 (312) 704-1970

REVISIONS	
NAME	DATE

ILLINOIS DEPARTMENT OF TRANSPORTATION
 SUE Investigation of Underground Utilities
 US ROUTE 30 (PLAINFIELD ROAD)
 AT LILY CACHE ROAD
 Contract Number: 62098
 DATE - SQL "B" 6/09/04
 DRAWN BY : KLC
 SCALE : 1" = 50'