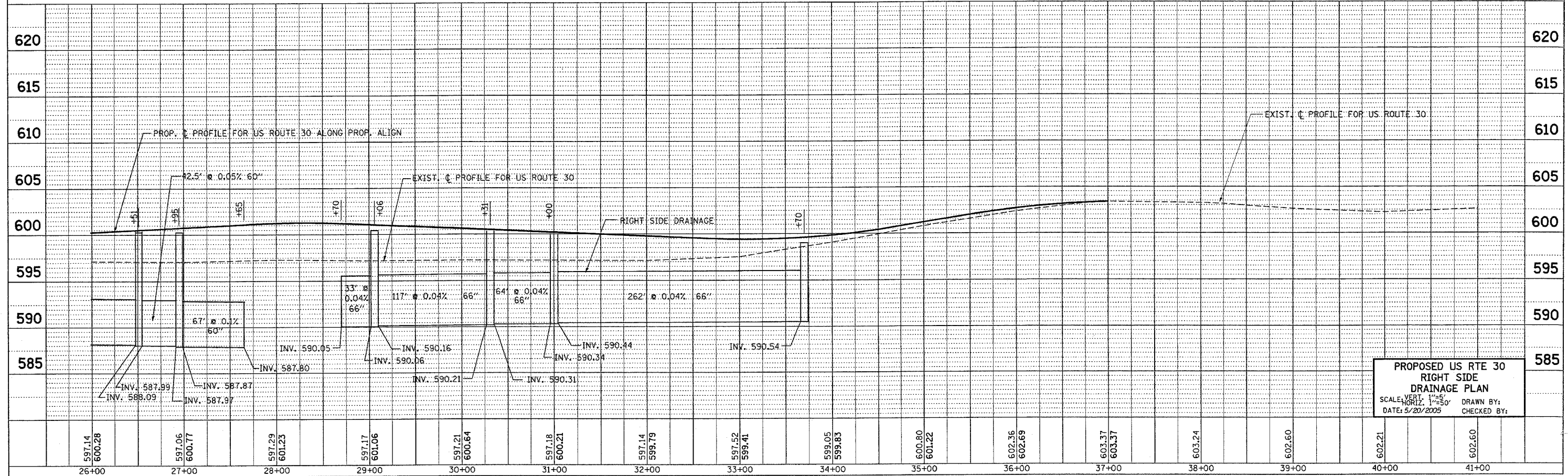
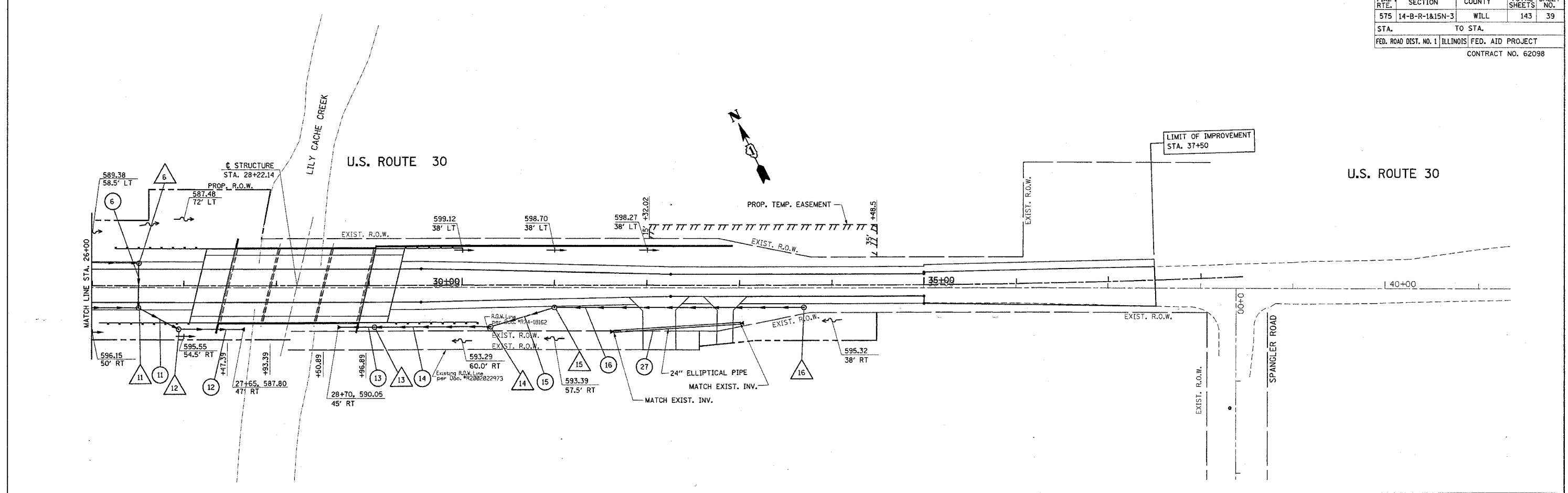


*REF-d_r1p1n2
*REF-d_r1p2of2

F.A.P. RTE.	SECTION	COUNTY	TOTAL SHEETS	SHEET NO.
575	14-B-R-1&15N-3	WILL	143	39
STA.		TO STA.		
FED. ROAD DIST. NO. 1		ILLINOIS FED. AID PROJECT		
CONTRACT NO. 62098				



**PROPOSED US RTE 30
RIGHT SIDE
DRAINAGE PLAN**
SCALE: VERT. 1"=5'
HORIZ. 1"=50'
DATE: 5/20/2005
DRAWN BY:
CHECKED BY: