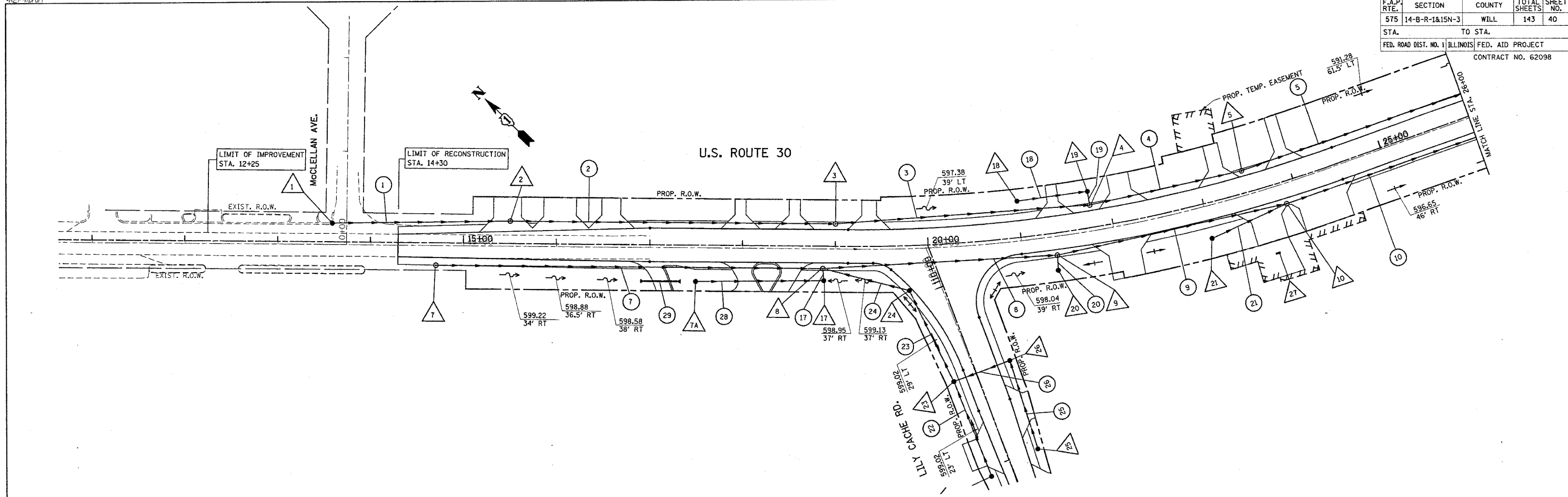


*REF: d:\hpl\ref: hprof1

F.A.P. RTE.	SECTION	COUNTY	TOTAL SHEETS	SHEET NO.
575	14-B-R-1&15N-3	WILL	143	40
STA.	TO STA.			
FED. ROAD DIST. NO. 1	ILLINOIS	FED. AID PROJECT		
CONTRACT NO. 62098				



**PROPOSED US RTE 30
LEFT SIDE
DRAINAGE PLAN**
 SCALE: VERT. 1"=5'
 HORIZ. 1"=50'
 DATE: 5/19/2005
 DRAWN BY: [blank]
 CHECKED BY: [blank]