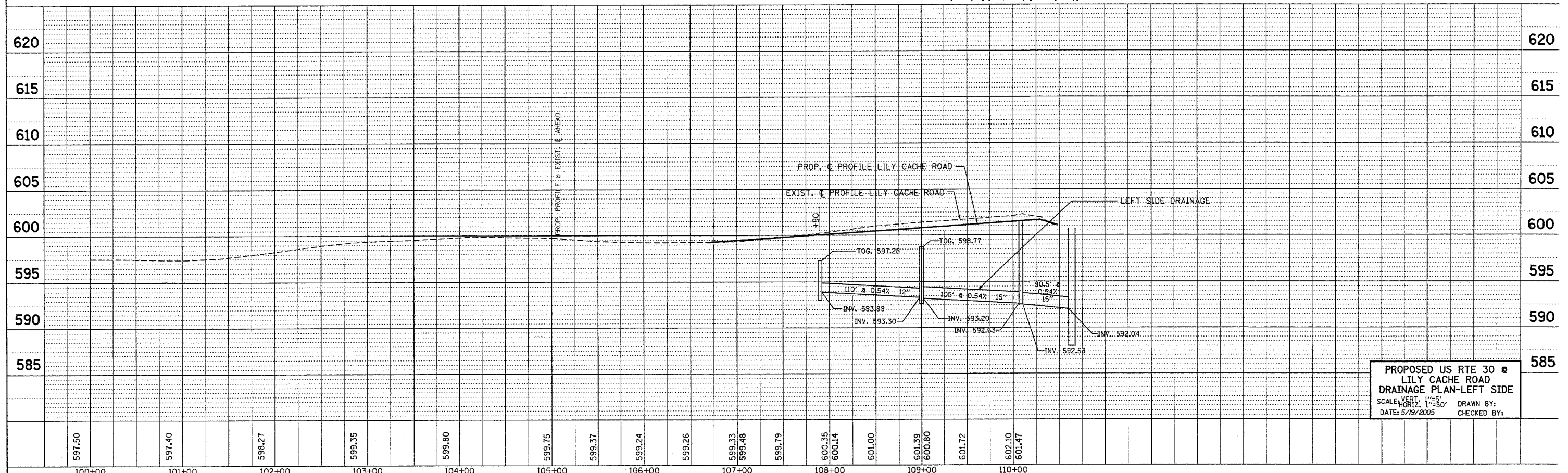
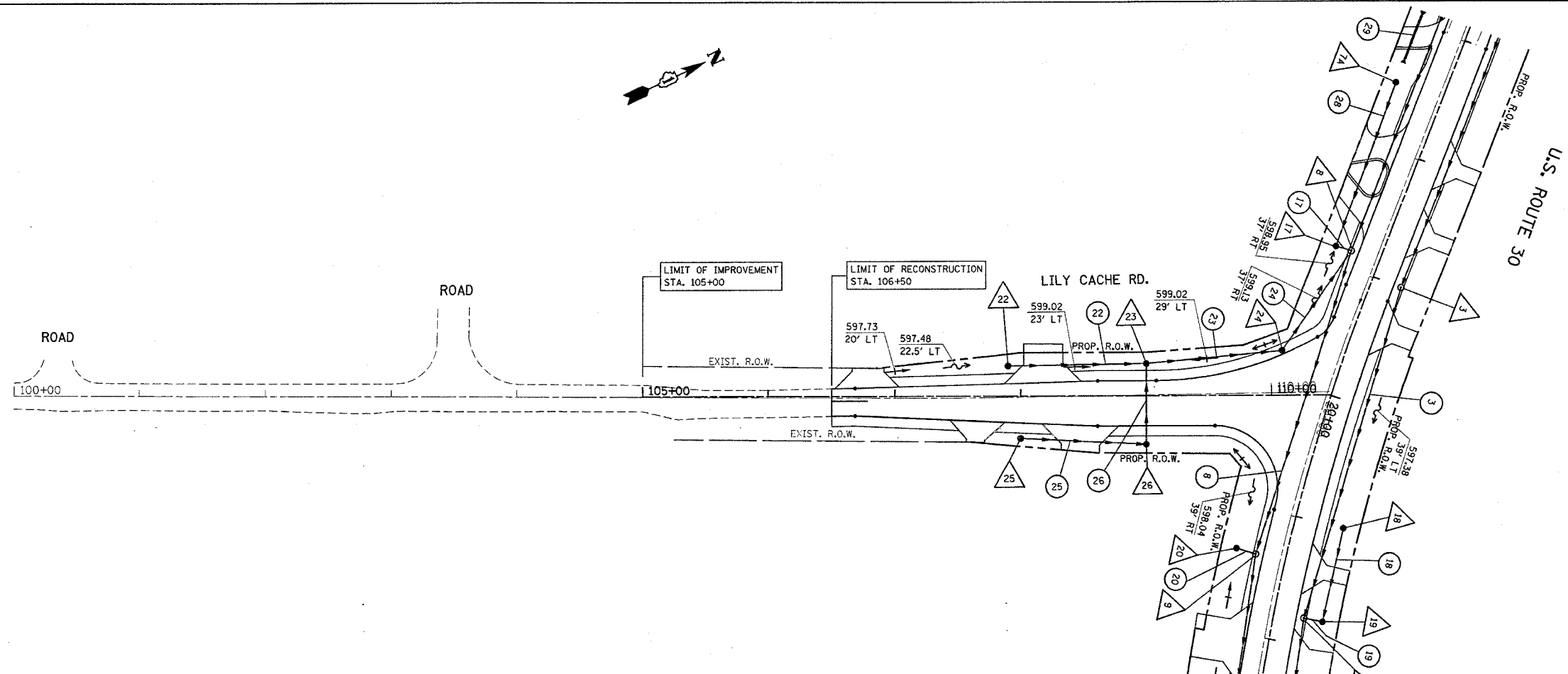


\*REF-d\_p1003  
\*REF-d\_prof03

F.A.P. RTE.	SECTION	COUNTY	TOTAL SHEETS	SHEET NO.
575	14-B-R-1&15N-3	WILL	143	43
STA. 100+00		TO STA. 110+00		
FED. ROAD DIST. NO. 1 ILLINOIS FED. AID PROJECT				
CONTRACT NO. 62098				



PROPOSED US RTE 30 @  
LILY CACHE ROAD  
DRAINAGE PLAN-LEFT SIDE  
SCALE VERT. 1"=5'  
DATE: 5/19/2005  
DRAWN BY:  
CHECKED BY: