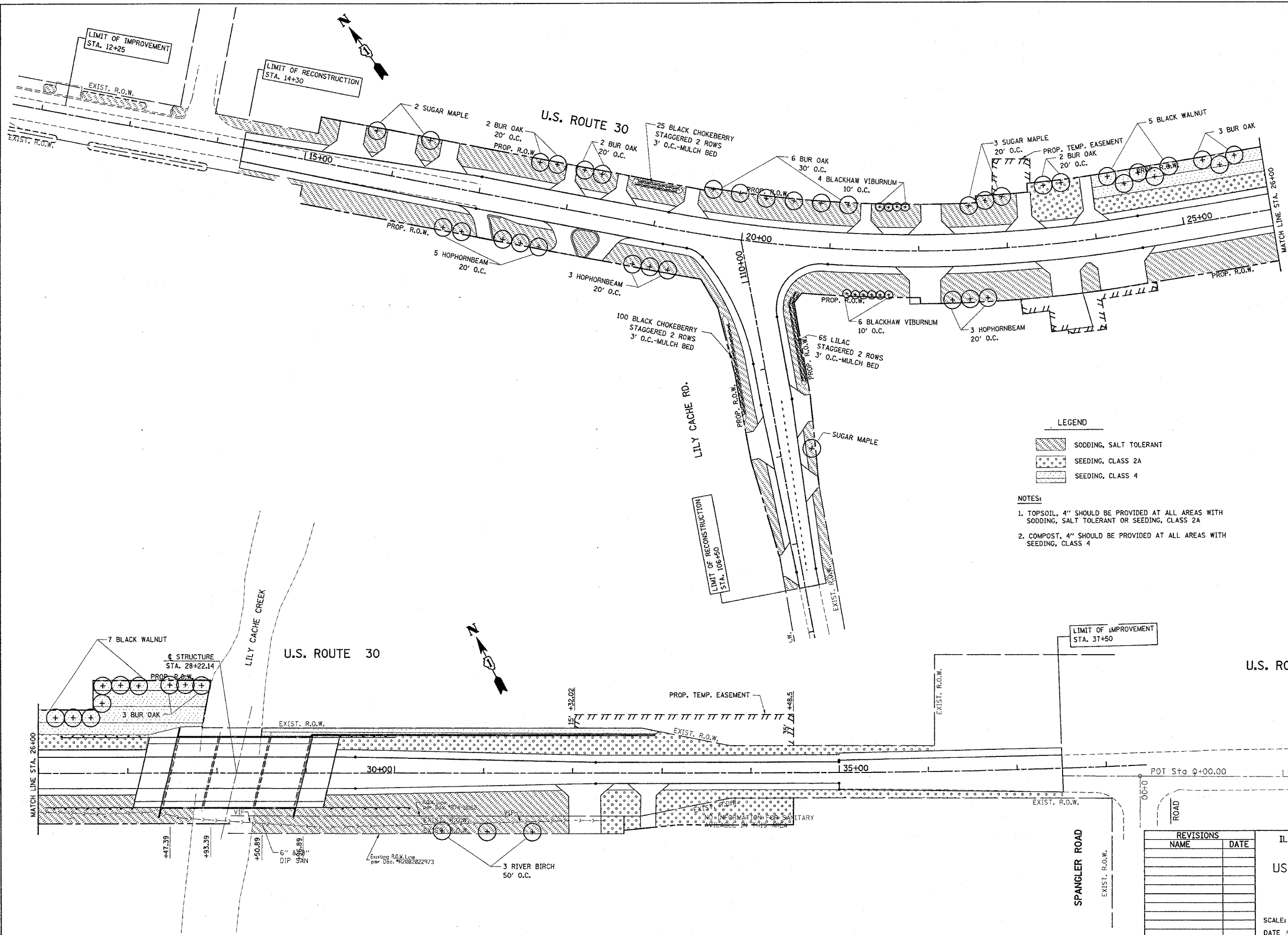


F.A.P. RTE.	SECTION	COUNTY	TOTAL SHEETS	SHEET NO.
575	14-B-R-1&15N-3	WILL	143	52
STA.	TO STA.			
FED. ROAD DIST. NO. 1	ILLINOIS	FED. AID PROJECT		
CONTRACT NO. 62098				



- LEGEND**
- SODDING, SALT TOLERANT
  - SEEDING, CLASS 2A
  - SEEDING, CLASS 4
- NOTES:**
1. TOPSOIL, 4" SHOULD BE PROVIDED AT ALL AREAS WITH SODDING, SALT TOLERANT OR SEEDING, CLASS 2A
  2. COMPOST, 4" SHOULD BE PROVIDED AT ALL AREAS WITH SEEDING, CLASS 4

REVISIONS	
NAME	DATE

ILLINOIS DEPARTMENT OF TRANSPORTATION  
 US RTE 30 @ LILY CACHE ROAD  
 PROPOSED LANDSCAPING  
 PLAN

SCALE: VERT.  
 HORIZ.  
 DATE 5/20/2005

DRAWN BY  
 CHECKED BY