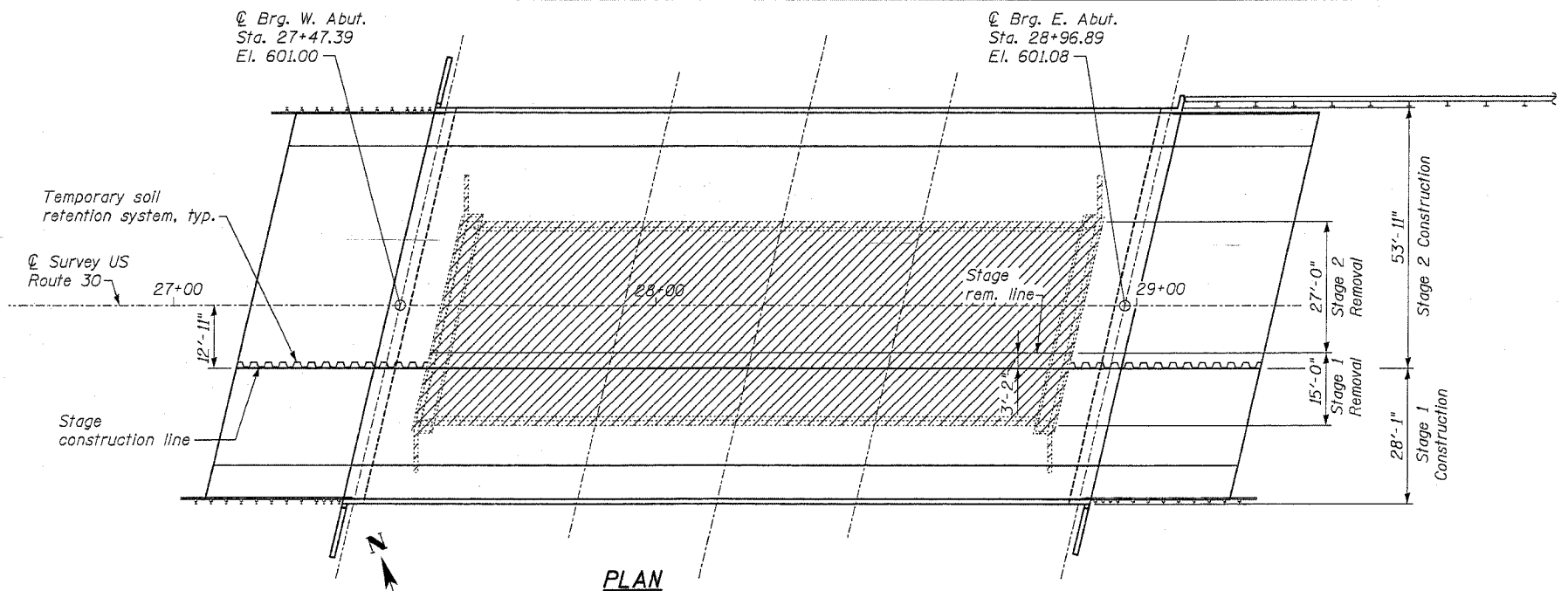


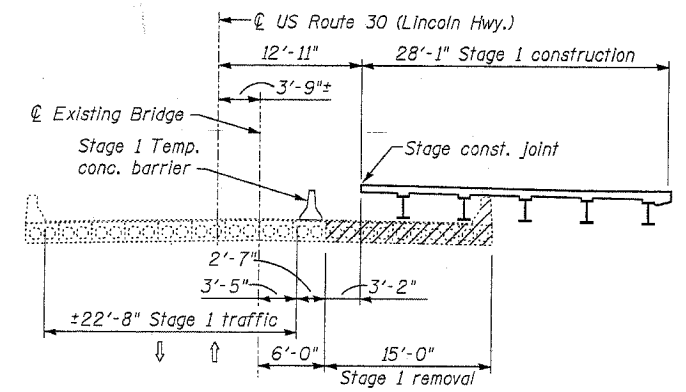
Contract No. 62098



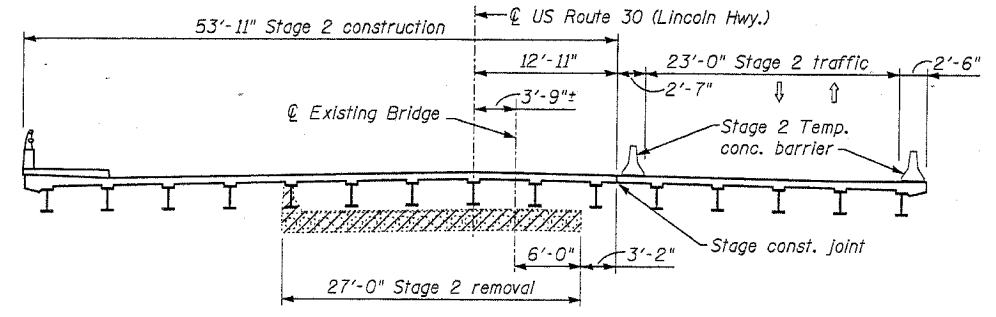
PLAN
 Removal of Existing Structure

BILL OF MATERIAL

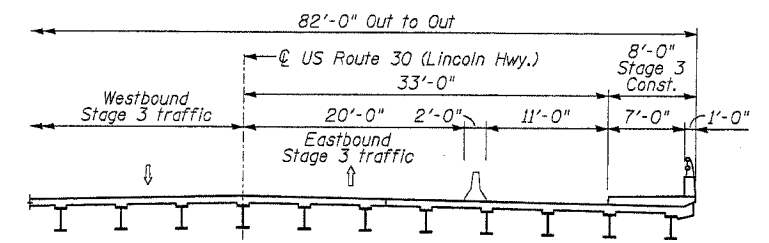
Item	Unit	Quantity
Removal of Existing Structures	Each	1
Temporary Soil Retention System	Sq. Ft.	169



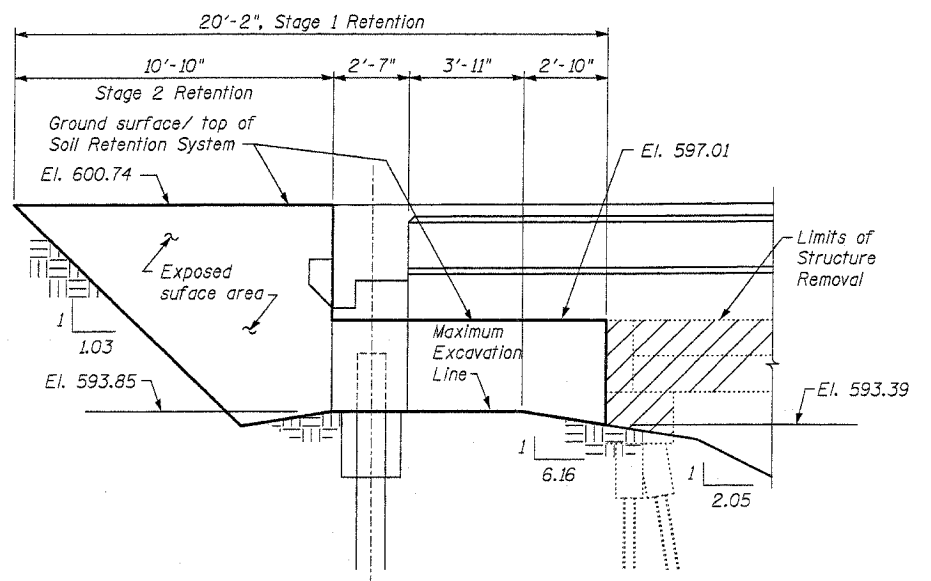
STAGE 1 REMOVAL & CONSTRUCTION
(looking east)



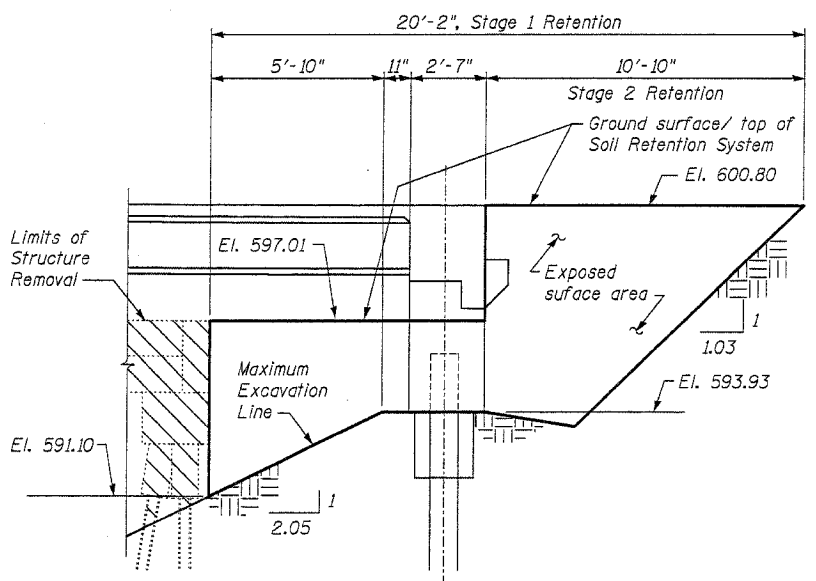
STAGE 2 REMOVAL & CONSTRUCTION
(looking east)



STAGE 3 CONSTRUCTION
(looking east)



WEST ABUTMENT



EAST ABUTMENT

TEMPORARY SOIL RETENTION SYSTEM

A cantilevered sheet piling design does not appear feasible and additional members or other retention systems may be necessary. The Contractor shall submit a temporary soil retention system design including plan details and calculations for review and acceptance by the Engineer.

NOTES:

- For quantity of Temporary Concrete Barrier, see Roadway Plans.
- For details of Temporary Concrete Barrier, see sheet S-4.

DESIGNED	MJM
CHECKED	WHE
DRAWN	EAB
CHECKED	WHE

REVISIONS	
NAME	DATE

LONGO, INC.
 CONSULTING ENGINEERS 630 NORTH WASHINGTON ST., SUITE 205
 NAPERVILLE, ILLINOIS 60563 (630) 577-9100

ILLINOIS DEPARTMENT OF TRANSPORTATION
STAGE CONSTRUCTION DETAILS
 US ROUTE 30 (LINCOLN HIGHWAY)
 OVER LILY CACHE CREEK
 WILL COUNTY
 F.A.P. ROUTE 0575 SEC. 148R
 STATION 28+22.14 NEW STRUCTURE NO. 099-4648
 DATE 03/24/05