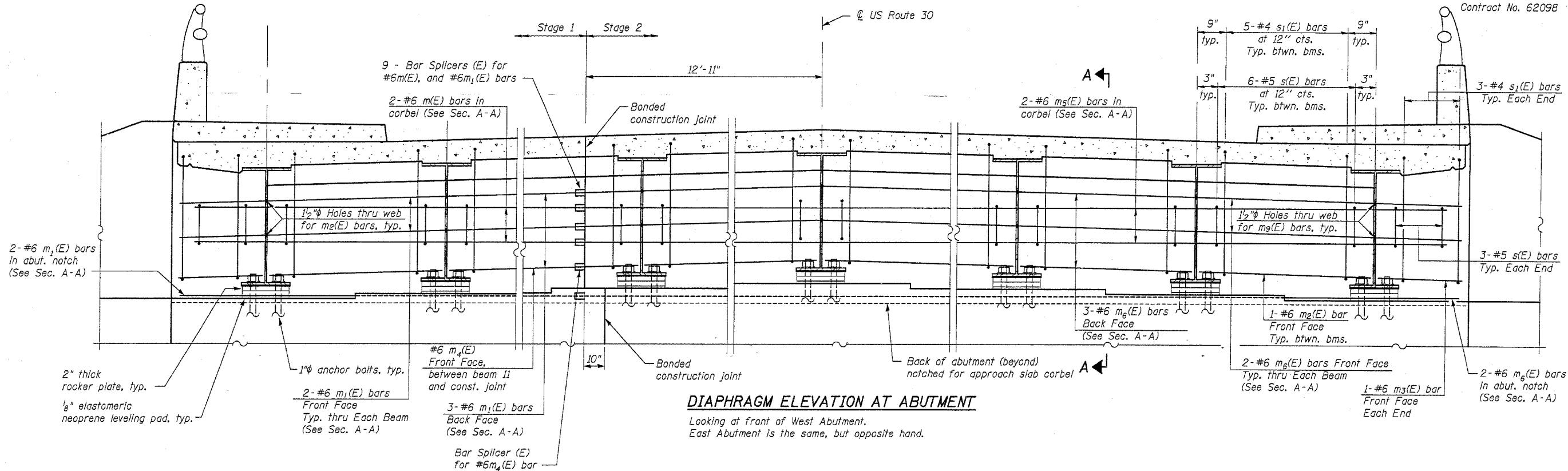


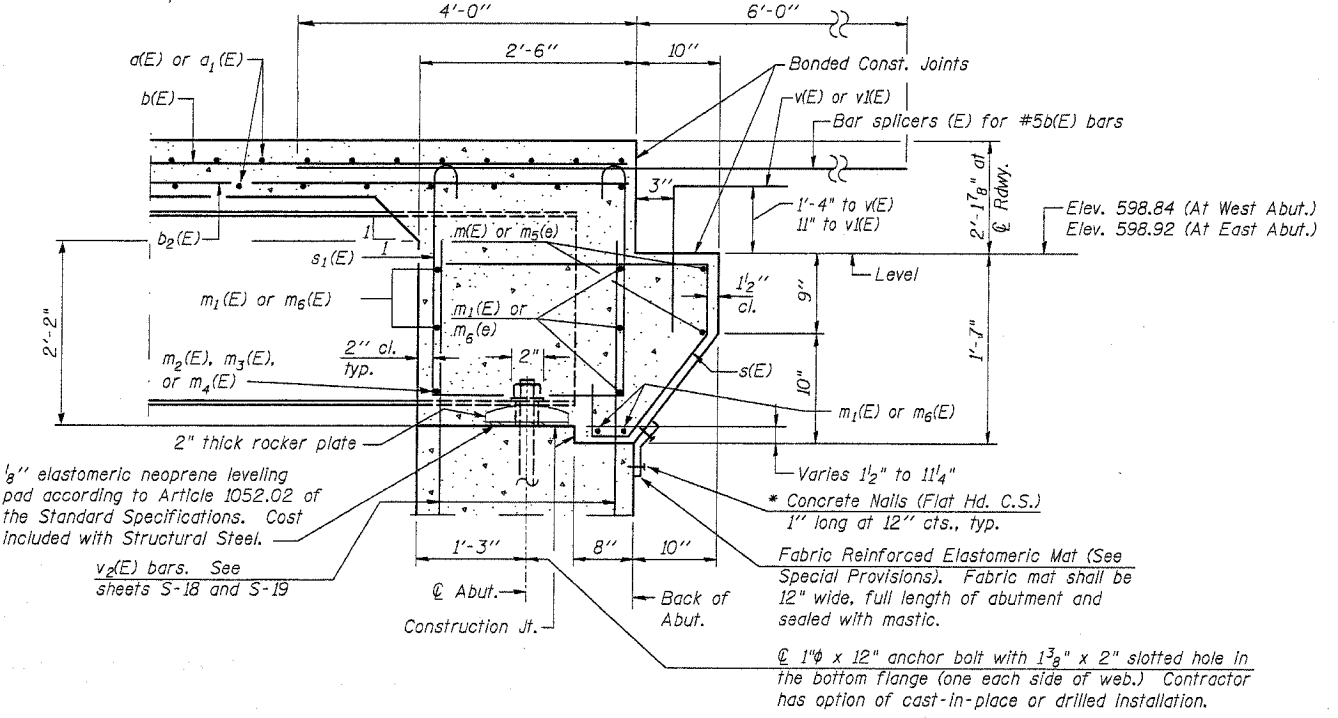
Contract No. 62098



DIAPHRAGM ELEVATION AT ABUTMENT
Looking at front of West Abutment.
East Abutment is the same, but opposite hand.

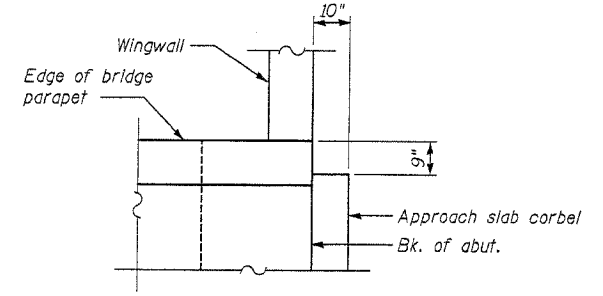
NOTES:

1. Reinforcement bars designated (E) shall be epoxy coated.
2. Concrete in diaphragm is included with concrete superstructure.
3. See sheet S-13 for Superstructure Bill of Material.
4. For anchor bolt details see sheet S-23.
5. For bearing details see sheet S-17.
6. The s(E) and s1(E) bars shall be placed parallel to the beams. Spacing for these bars shall be at right angles to the beams.



SECTION A-A

* Cost Included with Concrete Structures.



CORBEL NOTCH

Required for traffic barrier terminal, Type 6, typical each corner of bridge

DESIGNED	MJM
CHECKED	WHE
DRAWN	EAB
CHECKED	WHE

REVISIONS	
NAME	DATE

ILLINOIS DEPARTMENT OF TRANSPORTATION
**INTEGRAL ABUTMENT
DIAPHRAGM DETAILS**
US ROUTE 30 (LINCOLN HIGHWAY)
OVER LILY CACHE CREEK
WILL COUNTY

F.A.P. ROUTE 0575 SEC. 148R
STATION 28+22.14 NEW STRUCTURE NO. 099-4648
DATE 03/24/05

LONGO, INC.
CONSULTING ENGINEERS 630 NORTH WASHINGTON ST., SUITE 205
NAPERVILLE, ILLINOIS 60563 (630) 577-9100