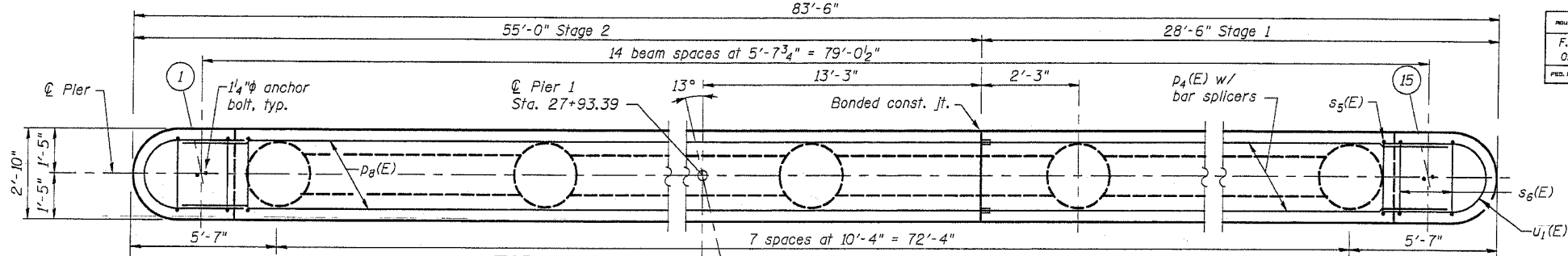


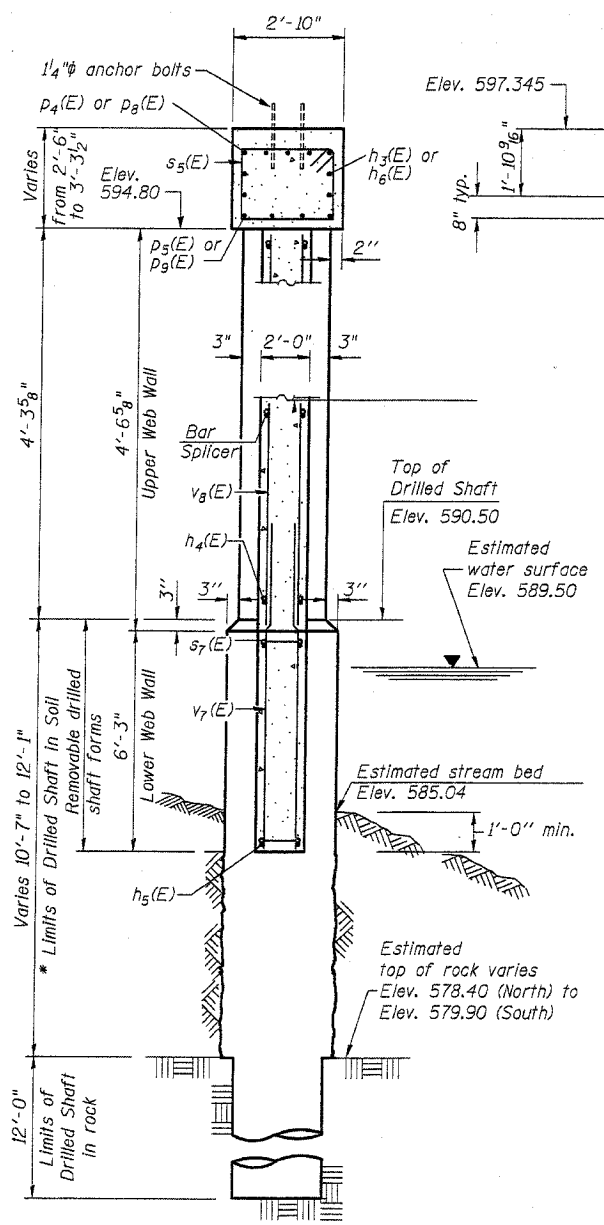
Contract No. 62098

**PIER 1
BEARING SEAT
ELEVATIONS**

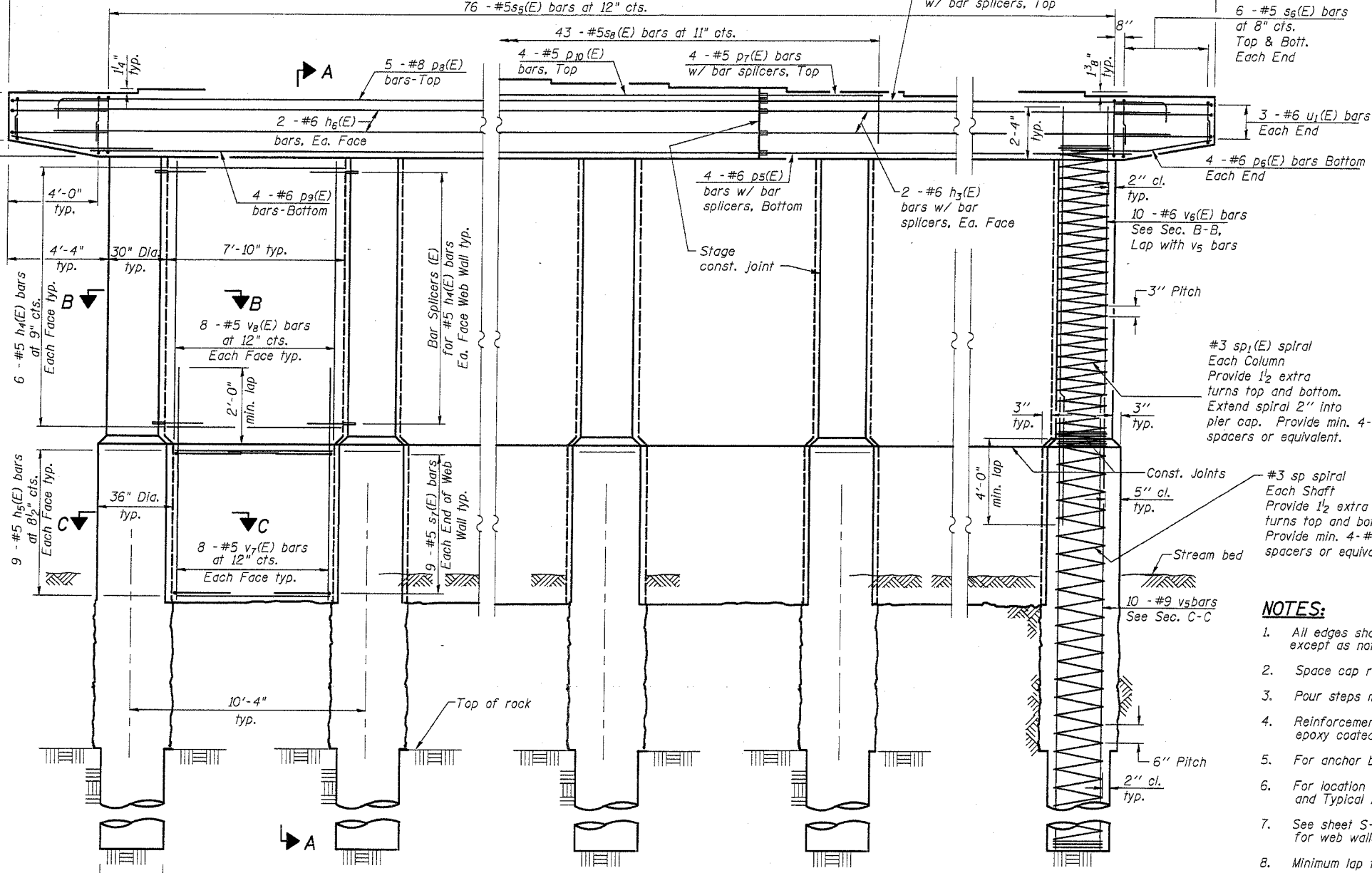
Beam No.	West Abut.
1	597.345
2	597.452
3	597.559
4	597.667
5	597.773
6	597.880
7	597.987
8	598.093
9	597.980
10	597.866
11	597.752
12	597.638
13	597.524
14	597.410
15	597.296



TOP PLAN



SECTION A-A



**ELEVATION
(Looking East)**

NOTES:

- All edges shall have standard 3/4" chamfers except as noted.
- Space cap reinforcement to miss anchor bolts.
- Pour steps monolithically with cap.
- Reinforcement bars designated (E) shall be epoxy coated.
- For anchor bolt details, see sheet S-23.
- For location of anchor bolts, see sheet S-17, and Typical Anchor Bolt Layout on sheet S-22.
- See sheet S-22 for construction sequence for web walls, pier details, and bill of material.
- Minimum lap for #3 spirals is 1'-6".

DESIGNED	MJM
CHECKED	WHE
DRAWN	EAB
CHECKED	WHE

* If the prevailing water surface elevation during construction is consistently different than estimated on the plans, the contractor may propose an adjustment to the top of the drilled shaft elevation as part of their installation procedure. The top of all drilled shafts within a substructure unit shall be constructed to the same elevation and extend above the prevailing water surface. The quantities and reinforcement detailing are based on the top of shaft and the estimated elevations shown and may change based on the actual elevations encountered at each shaft and the final top of shaft elevation.

LONCO, INC.
CONSULTING ENGINEERS 630 NORTH WASHINGTON ST., SUITE 205
NAPERVILLE, ILLINOIS 60563 (630) 577-9100

REVISIONS	NAME	DATE

ILLINOIS DEPARTMENT OF TRANSPORTATION
PIER 1 PLAN AND ELEVATION
US ROUTE 30 (LINCOLN HIGHWAY)
OVER LILY CACHE CREEK
WILL COUNTY
F.A.P. ROUTE 0575 SEC. 148R
STATION 28+22.14 NEW STRUCTURE NO. 099-4648
DATE 03/24/05