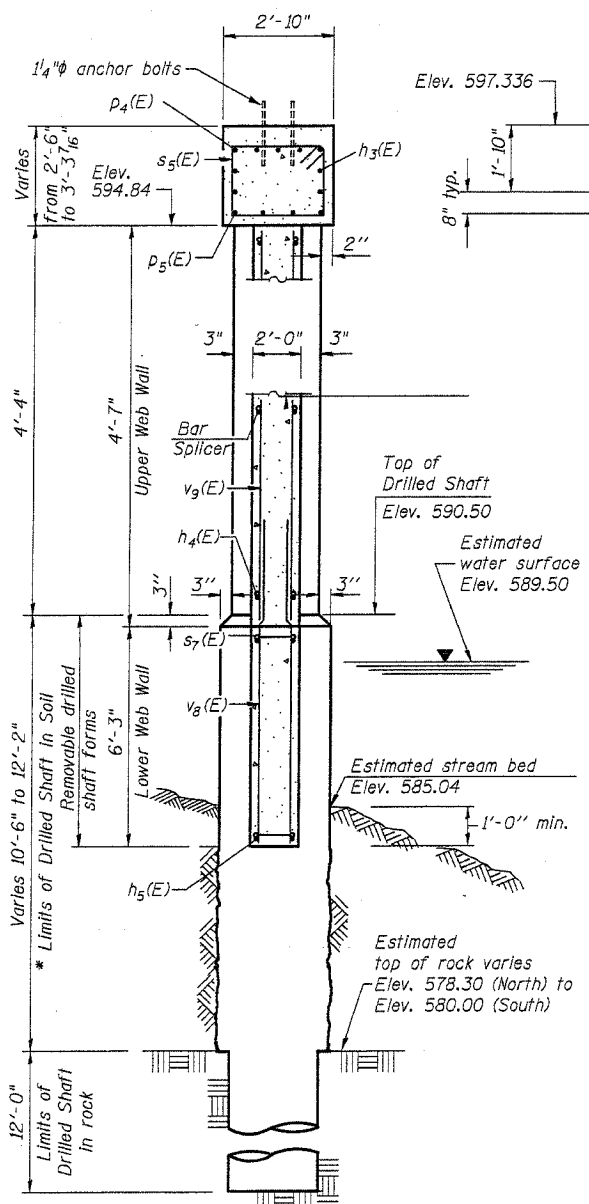
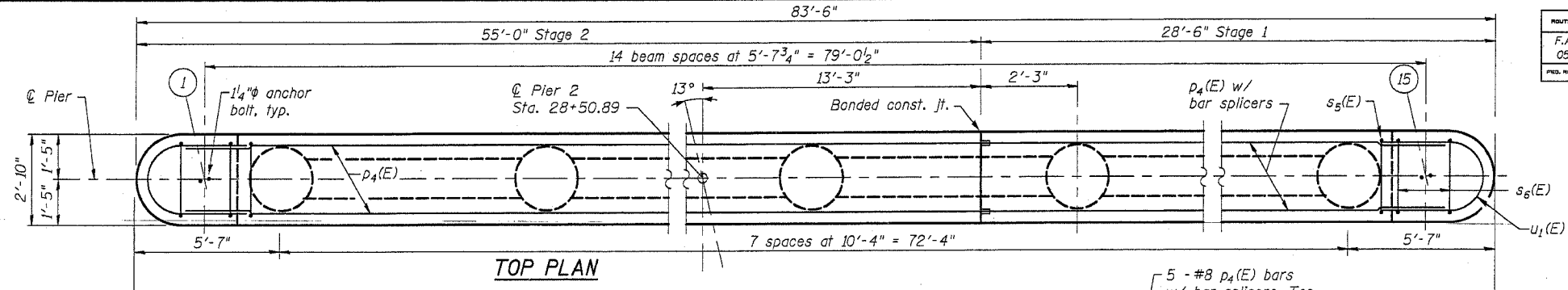


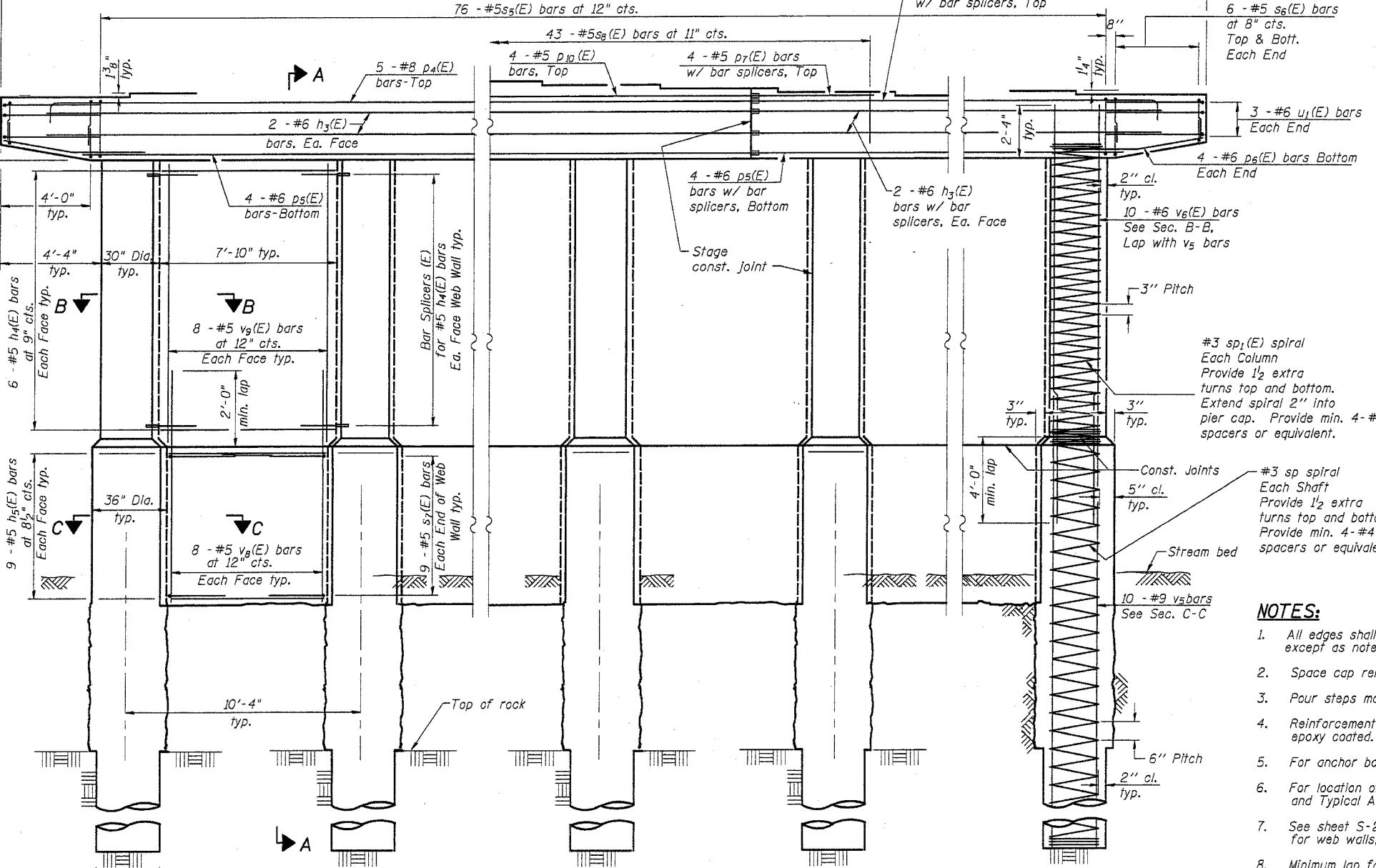
Contract No. 62098

**PIER 2  
BEARING SEAT  
ELEVATIONS**

Beam No.	West Abut.
1	597.336
2	597.449
3	597.562
4	597.675
5	597.788
6	597.900
7	598.012
8	598.125
9	598.017
10	597.909
11	597.800
12	597.692
13	597.584
14	597.475
15	597.367



**SECTION A-A**



**ELEVATION  
(Looking East)**

DESIGNED	MJM
CHECKED	WHE
DRAWN	EAB
CHECKED	WHE

\* If the prevailing water surface elevation during construction is consistently different than estimated on the plans, the contractor may propose an adjustment to the top of the drilled shaft elevation as part of their installation procedure. The top of all drilled shafts within a substructure unit shall be constructed to the same elevation and extend above the prevailing water surface. The quantities and reinforcement detailing are based on the top of shaft and the estimated elevations shown and may change based on the actual elevations encountered at each shaft and the final top of shaft elevation.

**NOTES:**

- All edges shall have standard 3/4" chamfers except as noted.
- Space cap reinforcement to miss anchor bolts.
- Pour steps monolithically with cap.
- Reinforcement bars designated (E) shall be epoxy coated.
- For anchor bolt details, see sheet S-23.
- For location of anchor bolts, see sheet S-17, and Typical Anchor Bolt Layout on sheet S-22.
- See sheet S-22 for construction sequence for web walls, pier details, and bill of material.
- Minimum lap for #3 spirals is 1'-6".

REVISIONS	
NAME	DATE

**LONGO, INC.**  
CONSULTING ENGINEERS 630 NORTH WASHINGTON ST., SUITE 205  
NAPERVILLE, ILLINOIS 60563 (630) 577-9100

ILLINOIS DEPARTMENT OF TRANSPORTATION  
**PIER 2 PLAN AND ELEVATION**  
US ROUTE 30 (LINCOLN HIGHWAY)  
OVER LILY CACHE CREEK  
WILL COUNTY  
F.A.P. ROUTE 0575 SEC. 14BR  
STATION 28+22.14 NEW STRUCTURE NO. 099-4648  
DATE 03/24/05