

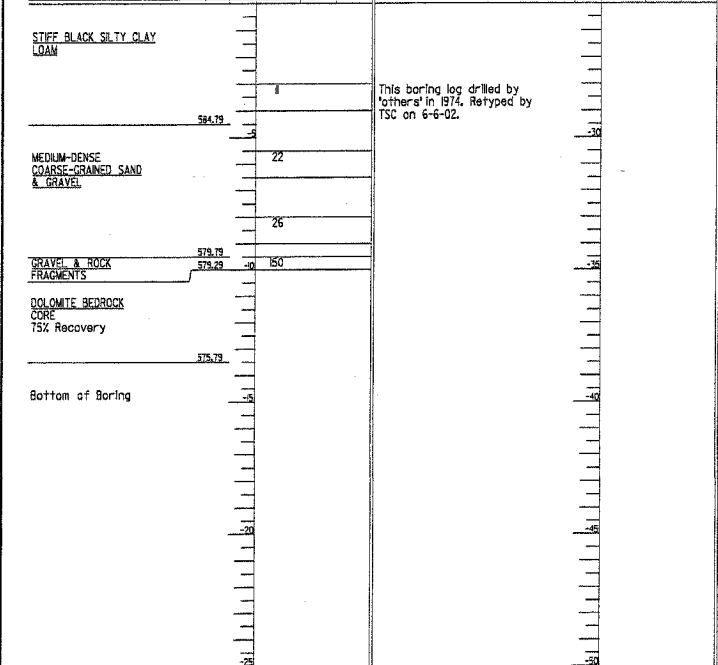
Contract No. 62098

ILLINOIS DEPARTMENT OF TRANSPORTATION
Testing Service Corporation
STRUCTURE BORING LOG

Page 1 of 1
Date 3/29/74

ROUTE FA 23 DESCRIPTION US Route 30 Over Lily Cache Creek
SECT. 14 BR STRUCT. NO. 099-0237 (existing) DRILLED BY J. R. Washburn
COUNTY WILL LOCATION S. 23, TWP. 36N, RNG. 9E

Boring No. B-1 Station 28+55 Offset 22.00 FT RT Surface Elev. 589.23 ft
Surface Water Elev. _____ Groundwater Elev. _____
when drilling _____ at Completion _____
after 24 Hrs. 586.3



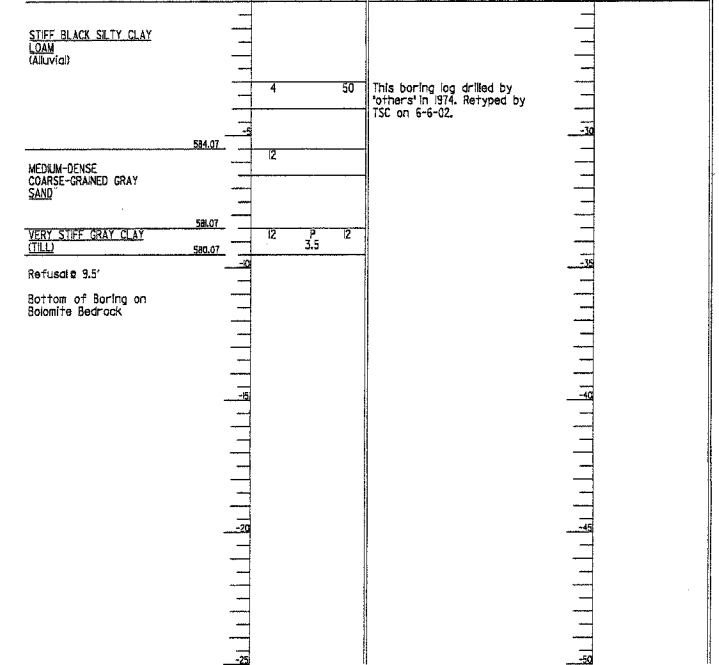
SPT, (N) = Sum of last two blow values in sample. (Q) B=Bulge S=Shear P=Penetration Test Stations, Depths, Offset, and Elevations are in Feet

ILLINOIS DEPARTMENT OF TRANSPORTATION
Testing Service Corporation
STRUCTURE BORING LOG

Page 1 of 1
Date 3/29/74

ROUTE FA 23 DESCRIPTION US Route 30 Over Lily Cache Creek
SECT. 14 BR STRUCT. NO. 099-0237 (existing) DRILLED BY J. R. Washburn
COUNTY WILL LOCATION S. 23, TWP. 36N, RNG. 9E

Boring No. B-2 Station 28+89 Offset 34.00 FT RT Surface Elev. 589.57 ft
Surface Water Elev. _____ Groundwater Elev. _____
when drilling _____ at Completion _____
after 24 Hrs. 586.5



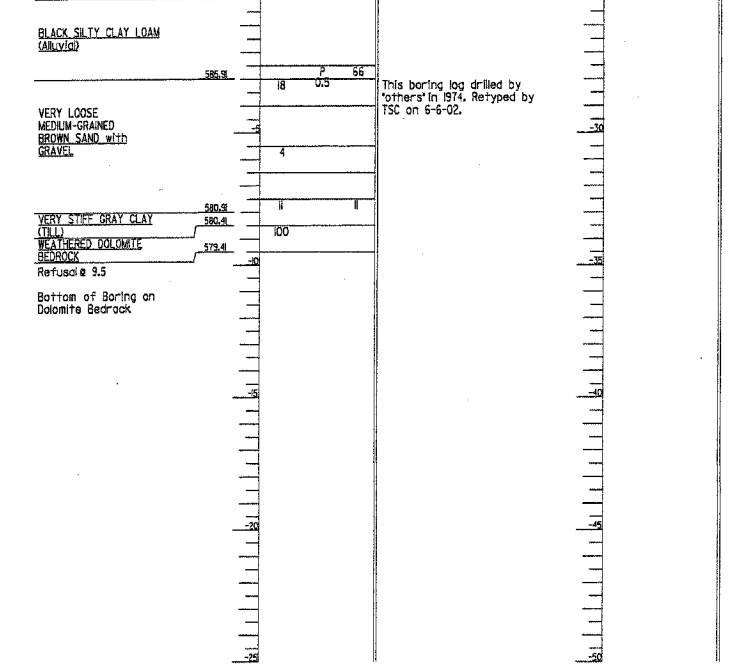
SPT, (N) = Sum of last two blow values in sample. (Q) B=Bulge S=Shear P=Penetration Test Stations, Depths, Offset, and Elevations are in Feet

ILLINOIS DEPARTMENT OF TRANSPORTATION
Testing Service Corporation
STRUCTURE BORING LOG

Page 1 of 1
Date 3/29/74

ROUTE FA 23 DESCRIPTION US Route 30 Over Lily Cache Creek
SECT. 14 BR STRUCT. NO. 099-0237 (existing) DRILLED BY J. R. Washburn
COUNTY WILL LOCATION S. 23, TWP. 36N, RNG. 9E

Boring No. B-3 Station 27+91 Offset 47.00 FT RT Surface Elev. 588.91 ft
Surface Water Elev. _____ Groundwater Elev. _____
when drilling _____ at Completion _____
after 24 Hrs. 586.9



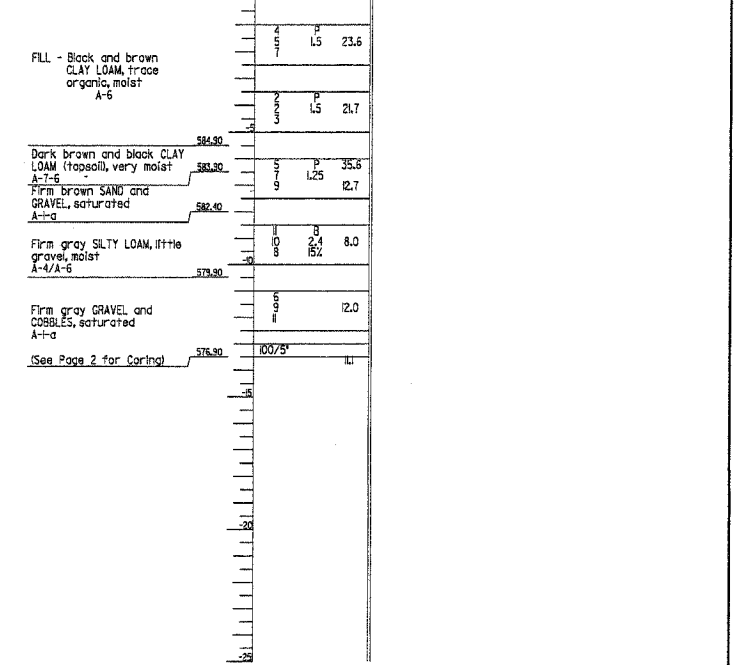
SPT, (N) = Sum of last two blow values in sample. (Q) B=Bulge S=Shear P=Penetration Test Stations, Depths, Offset, and Elevations are in Feet

ILLINOIS DEPARTMENT OF TRANSPORTATION
Testing Service Corporation
STRUCTURE BORING LOG

Page 1 of 2
Date 3/29/74

ROUTE FAP 575 DESCRIPTION US 30 Over Lily Cache Creek, D-91-002-01
SECT. 14-B-R-1 STRUCT. NO. 099-0237 (existing) DRILLED BY TSC/L-53,455
COUNTY WILL LOCATION Retaining Well S. 23, TWP. 36N, RNG. 9E

Boring No. 104 Station 23+70 Offset 35.00 FT LI Surface Elev. 590.40 ft
Surface Water Elev. _____ Groundwater Elev. _____
when drilling _____ at Completion _____
after _____ Hrs. _____



SPT, (N) = Sum of last two blow values in sample. (Q) B=Bulge S=Shear P=Penetration Test Stations, Depths, Offset, and Elevations are in Feet

DESIGNED MJM
CHECKED WHE
DRAWN EAB
CHECKED WHE

LOCO INC.
CONSULTING ENGINEERS 630 NORTH WASHINGTON ST., SUITE 205
NAPERVILLE, ILLINOIS 60563 (630) 571-9100

REVISIONS	
NAME	DATE

ILLINOIS DEPARTMENT OF TRANSPORTATION
BORING LOGS
(1 OF 5)
US ROUTE 30 (LINCOLN HIGHWAY)
OVER LILY CACHE CREEK
WILL COUNTY
F.A.P. ROUTE 0575 SEC. 14BR
STATION 28+22.14 NEW STRUCTURE NO. 099-4648
DATE 03/24/05