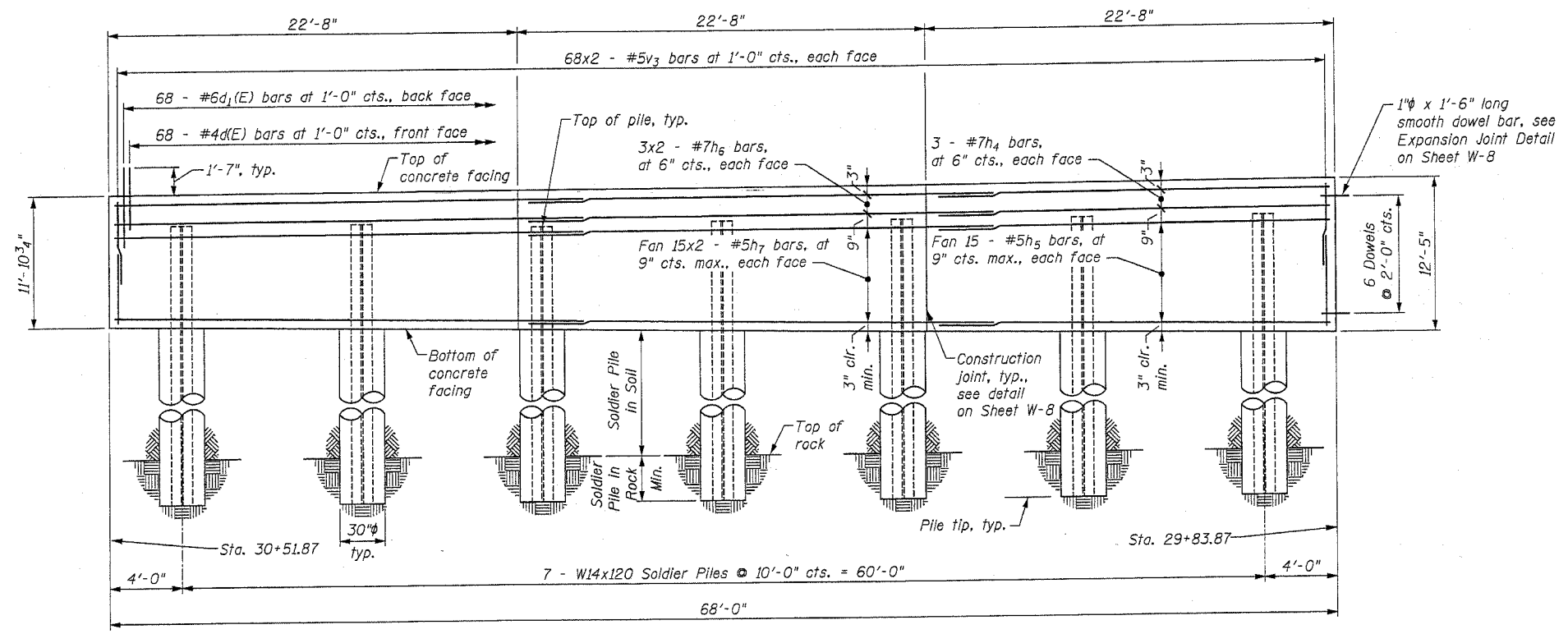


Contract No. 62098



ELEVATION - PANEL 4
Looking South

NOTES:

1. Reinforcement designated 3x2-#4, etc., indicates 3 lines of #4 bars with 2 bars per line.
2. Reinforcement bars designated (E) shall be epoxy coated.
3. Minimum bar laps: #5 = 1'-9", #7 = 2'-9"
4. For typical concrete facing sections and details, including joints, rustication, etc., see Sheet W-8.
5. For details of concrete parapet to be cast on top of concrete facing, see Sheet W-9.

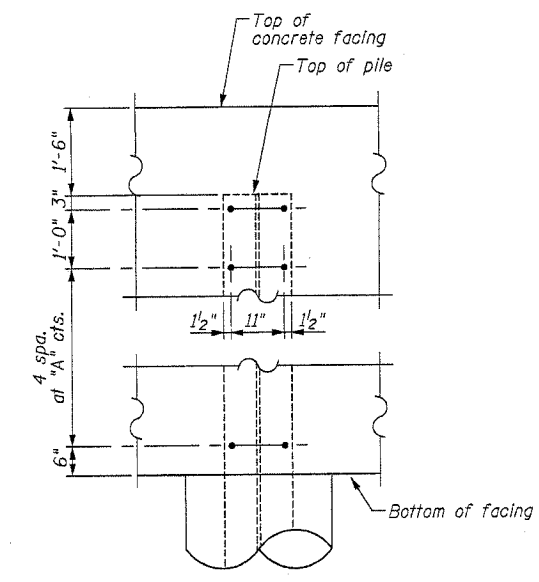
WALL INFORMATION - PANEL 4

Location	Station	Front Face of Facing Offset (ft.)	Top of Facing Elevation	Bottom of Facing Elevation	Facing Height	Top of Rock Elevation	Pile Embedment in Soil (ft.)	Minimum Pile Embedment in Rock (ft.)	Top of Pile Elevation	Bottom of Pile Elevation	Pile Length (ft.)	Pile Type	Shear Stud Connectors		
													Dim. "A" (ft.)	Total	
Start Panel	3051.87	43.00 Lt	600.63	588.74	11.89										
Pile 22	3047.87	43.00 Lt	600.65	588.73	11.92	576.66	12.06	5.00	599.15	571.66	27.48	W14x120	2.17	12	
Pile 23	3037.87	43.00 Lt	600.69	588.69	12.00	576.60	12.09	5.00	599.19	571.60	27.59	W14x120	2.19	12	
Pile 24	3027.87	43.00 Lt	600.73	588.66	12.08	576.65	12.01	5.00	599.23	571.65	27.59	W14x120	2.21	12	
Pile 25	3017.87	43.00 Lt	600.78	588.62	12.16	576.69	11.93	5.00	599.28	571.69	27.58	W14x120	2.23	12	
Pile 26	3007.87	43.00 Lt	600.82	588.58	12.23	576.74	11.85	5.00	599.32	571.74	27.58	W14x120	2.25	12	
Pile 27	2997.87	43.00 Lt	600.86	588.55	12.31	576.78	11.77	5.00	599.36	571.78	27.58	W14x120	2.27	12	
Pile 28	2987.87	43.00 Lt	600.90	588.51	12.39	576.82	11.69	5.00	599.40	571.82	27.58	W14x120	2.28	12	
End Panel	2983.87	43.00 Lt	600.92	588.50	12.42										

BILL OF MATERIAL

Bar	No.	Size	Length	Shape
d(E)	68	#4	3'-0"	
d1(E)	68	#6	3'-9"	
h4	6	#7	22'-4"	
h5	30	#5	22'-4"	
h6	12	#7	25'-6"	
h7	60	#5	24'-6"	
v3	272	#5	6'-11"	

Item	Unit	Quantity
Porous Granular Embankment	Cu. Yd.	166
Structure Excavation	Cu. Yd.	25
Concrete Structures	Cu. Yd.	31.2
Stud Shear Connectors	Each	84
Furnishing Soldier Piles (W Section)	Foot	193
Reinforcement Bars	Pound	6940
Reinforcement Bars, Epoxy Coated	Pound	519
Geocomposite Wall Drain	Sq. Yd.	84
Drilling and Setting Soldier Piles (In Soil)	Cu. Ft.	409
Drilling and Setting Soldier Piles (In Rock)	Cu. Ft.	172
Rustication Finish	Sq. Ft.	623



SHEAR STUD DETAIL

DESIGNED	MJM
CHECKED	WHE
DRAWN	EAB
CHECKED	WHE

LOCO, INC.
CONSULTING ENGINEERS 700 EAST DIEHL ROAD, SUITE 180
NAPERVILLE, ILLINOIS 60563 (630) 577-9100

REVISIONS	
NAME	DATE

ILLINOIS DEPARTMENT OF TRANSPORTATION
WALL ELEVATION (4 OF 5)
DRILLED SOLDIER PILE WALL
US ROUTE 30 (LINCOLN HIGHWAY)
OVER LILY CACHE CREEK
WILL COUNTY
F.A.P. ROUTE 0575 SEC. 14BR
STATION 31+00.61 NEW STRUCTURE NO. 099-W012
DATE 03/24/05