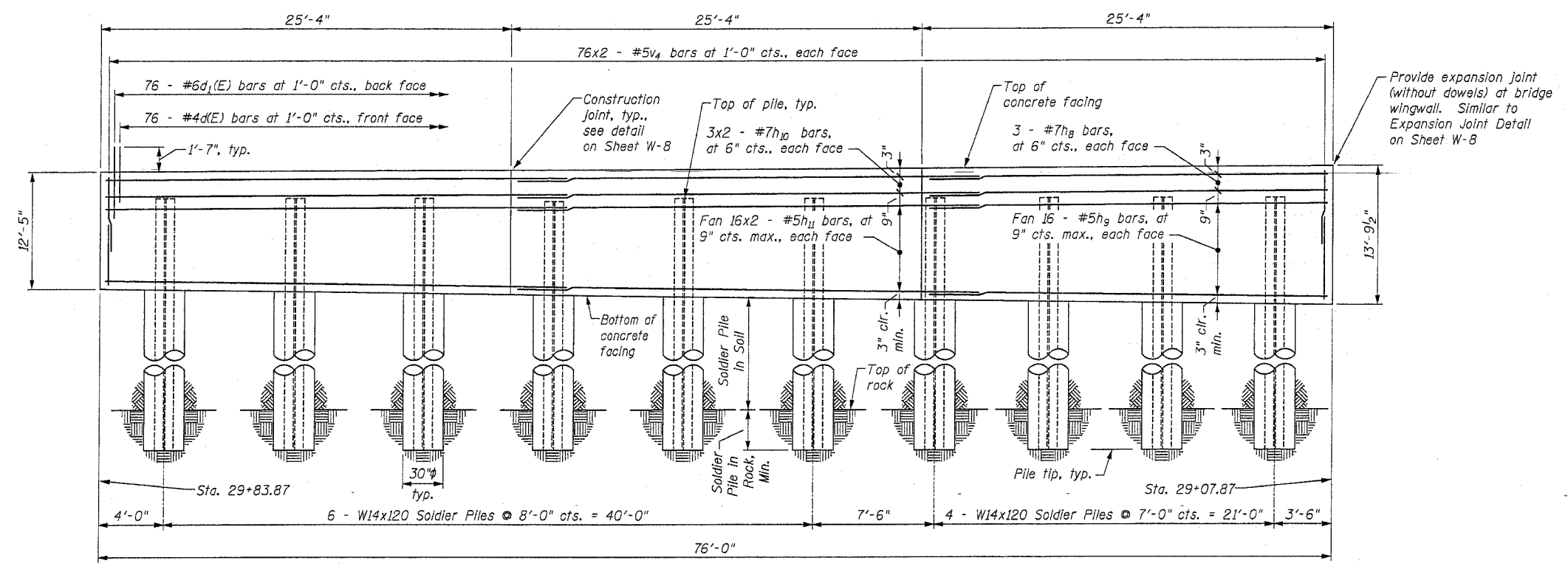


Contract No. 62098



**ELEVATION - PANEL 5**  
Looking South

**NOTES:**

1. Reinforcement designated 3x2-#4, etc., indicates 3 lines of #4 bars with 2 bars per line.
2. Reinforcement bars designated (E) shall be epoxy coated.
3. Minimum bar laps: #5 = 1'-9", #7 = 2'-9"
4. For typical concrete facing sections and details, including joints, rustication, etc., see Sheet W-8.
5. For details of concrete parapet to be cast on top of concrete facing, see Sheet W-9.

**BILL OF MATERIAL**

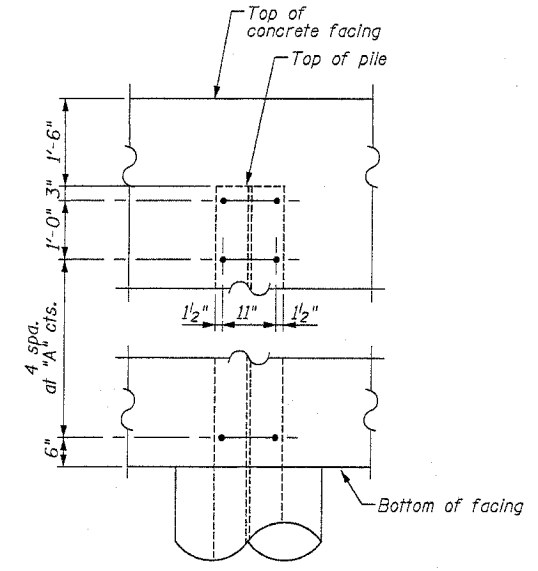
Bar	No.	Size	Length	Shape
d1(E)	76	#4	3'-0"	
d1(E)	76	#6	3'-9"	
h8	6	#7	25'-0"	
h9	32	#5	25'-0"	
h10	12	#7	28'-2"	
h11	64	#5	27'-2"	
v4	304	#5	7'-7"	

Item	Unit	Quantity
Parous Granular Embankment	Cu. Yd.	217
Structure Excavation	Cu. Yd.	28
Concrete Structures	Cu. Yd.	37.6
Stud Shear Connectors	Each	120
Furnishing Soldier Piles (W Section)	Foot	272
Reinforcement Bars	Pound	8273
Reinforcement Bars, Epoxy Coated	Pound	580
Geocomposite Wall Drain	Sq. Yd.	102
Drilling and Setting Soldier Piles (In Soil)	Cu. Ft.	471
Drilling and Setting Soldier Piles (In Rock)	Cu. Ft.	295
Rustication Finish	Sq. Ft.	768

**WALL INFORMATION - PANEL 5**

Location	Station	Front Face of Facing Offset (ft.)	Top of Facing Elevation	Bottom of Facing Elevation	Facing Height	Top of Rock Elevation	Pile Embedment in Soil (ft.)	Minimum Pile Embedment in Rock (ft.)	Top of Pile Elevation	Bottom of Pile Elevation	Pile Length (ft.)	Pile Type	Shear Stud Connectors		
													Dim. "A" (ft.)	Total	
Start Panel	2983.87	43.00 Lt	600.92	588.50	12.42										
Pile 29	2979.87	43.00 Lt	600.94	588.44	12.49	576.86	11.59	5.00	599.44	571.86	27.58	W14x120	2.31	12	
Pile 30	2971.87	43.00 Lt	600.97	588.33	12.64	576.89	11.44	5.00	599.47	571.89	27.58	W14x120	2.35	12	
Pile 31	2963.87	43.00 Lt	601.01	588.22	12.78	577.24	10.99	5.50	599.51	571.74	27.77	W14x120	2.38	12	
Pile 32	2955.87	43.00 Lt	601.04	588.11	12.93	577.68	10.43	5.50	599.54	572.18	27.36	W14x120	2.42	12	
Pile 33	2947.87	43.00 Lt	601.07	588.00	13.07	578.12	9.88	6.00	599.57	572.12	27.45	W14x120	2.46	12	
Pile 34	2939.87	43.00 Lt	601.11	587.89	13.22	578.56	9.33	6.00	599.61	572.56	27.05	W14x120	2.49	12	
Pile 35	2932.37	43.00 Lt	601.14	587.79	13.35	578.97	8.82	6.50	599.64	572.47	27.17	W14x120	2.53	12	
Pile 36	2925.37	43.00 Lt	601.17	587.69	13.48	579.36	8.33	6.50	599.67	572.86	26.81	W14x120	2.56	12	
Pile 37	2918.37	43.00 Lt	601.20	587.60	13.60	579.74	7.85	7.00	599.70	572.74	26.95	W14x120	2.59	12	
Pile 38	2911.37	43.00 Lt	601.23	587.50	13.73	580.13	7.37	7.00	599.73	573.13	26.60	W14x120	2.62	12	
End Panel	2907.87	43.00 Lt	601.24	587.45	13.79										



**SHEAR STUD DETAIL**

DESIGNED	MJM
CHECKED	WHE
DRAWN	EAB
CHECKED	WHE

**LOWCO, INC.**  
CONSULTING ENGINEERS 700 EAST DIEHL ROAD., SUITE 180  
NAPERVILLE, ILLINOIS 60563 16301 577-9100

REVISIONS	
NAME	DATE

ILLINOIS DEPARTMENT OF TRANSPORTATION  
**WALL ELEVATION (5 OF 5)**  
DRILLED SOLDIER PILE WALL  
US ROUTE 30 (LINCOLN HIGHWAY)  
OVER LILY CACHE CREEK  
WILL COUNTY  
F.A.P. ROUTE 0575 SEC. 14BR  
STATION 31+00.61 NEW STRUCTURE NO. 099-W012  
DATE 03/24/05