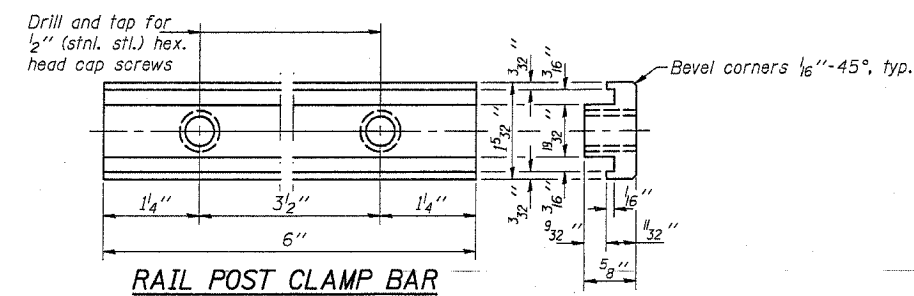
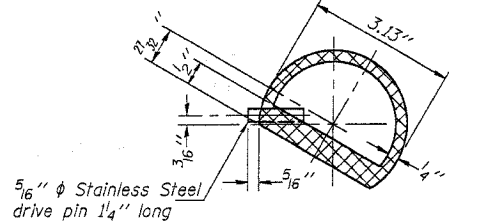


SECTION THRU TOP RAIL



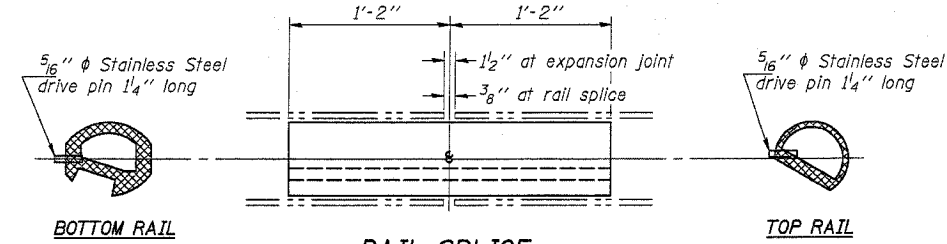
RAIL POST CLAMP BAR

For Top Rail

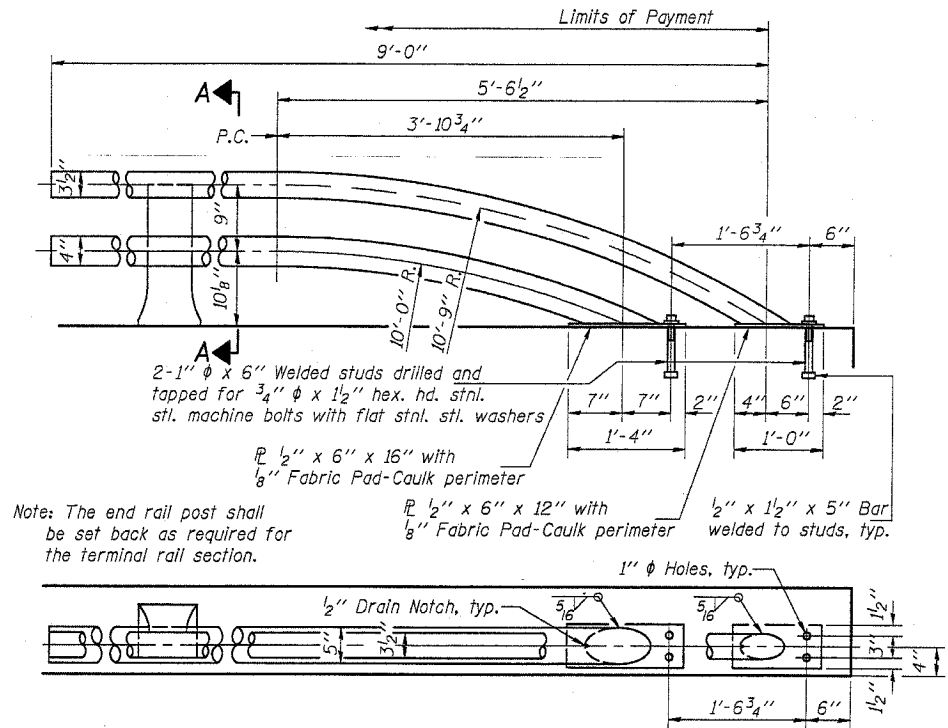


SECTION THRU SPLICE

For Top Rail

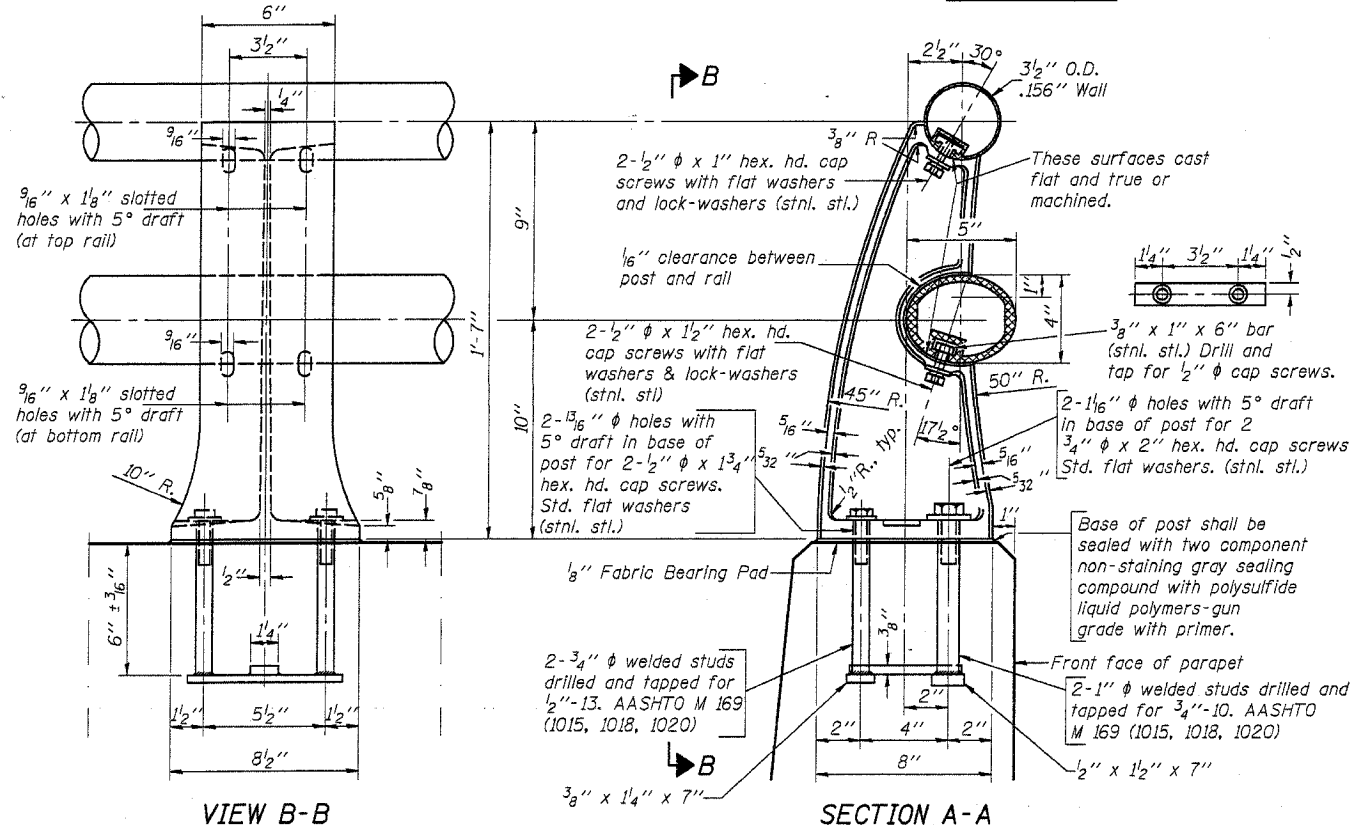


RAIL SPLICE

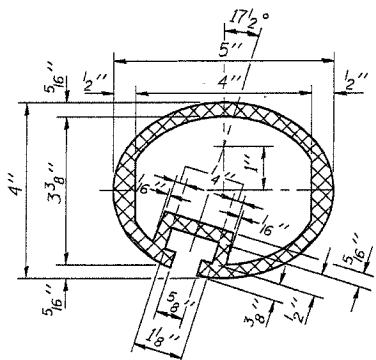


RAIL TERMINAL SECTION

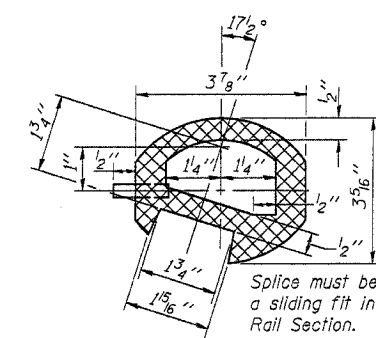
East End of Wall



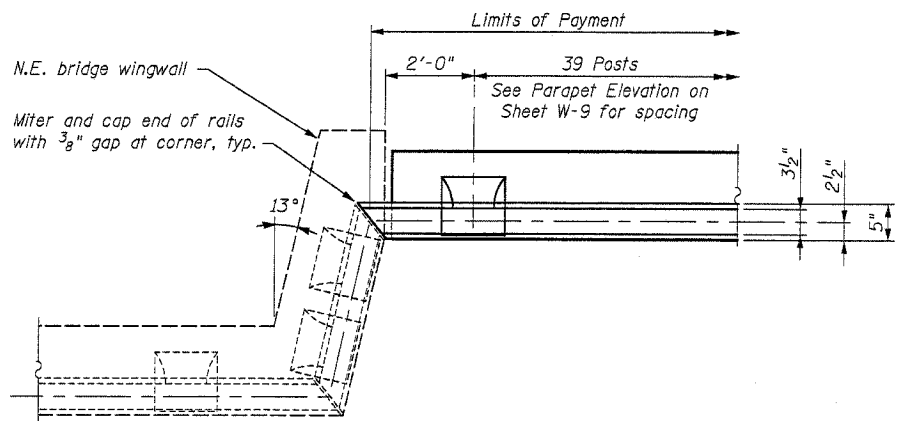
RAIL POST DETAILS



SEC. THRU ELLIPTICAL RAIL SECTION



SEC. THRU SPLICE



WEST END OF RAIL

Notes:
 All Posts shall be normal to parapet.
 All Aluminum Alloy Extruded Rail shall be supplied in modular lengths of 30 feet, except at the end of bridge or over open joints in bridge deck where the rail shall be attached to a minimum of 2 posts. If the rail is on a horizontal curve of 2300 foot radius or less, the modular lengths may be reduced but shall be attached to a minimum of 2 posts.
 All joints in rail shall be spliced per detail.
 Provide 1-1/8 inch and 2-1/16 inch Aluminum Shims for 25% of the Posts. Rail elements shall be parallel to Grade-high spots will be ground and low spots shimmed.
 Railing shall be according to Section 509 of the Standard Specifications, except as noted, and will be paid for at the contract unit price per foot for ALUMINUM RAILING, TYPE L.
 Aluminum alloy rail shall conform to ASTM B 221 alloy 6061-T6 or 6351-T5 with min. yield 35 ksi, min. tensile 38 ksi, and elongation of 10% in 2 inches.

BILL OF MATERIAL

Item	Unit	Quantity
Aluminum Railing, Type L	Foot	383

DESIGNED	MJM
CHECKED	WHE
DRAWN	EAB
CHECKED	WHE

REVISIONS	
NAME	DATE

ILLINOIS DEPARTMENT OF TRANSPORTATION
TYPE L ALUMINUM RAILING DETAILS
 DRILLED SOLDIER PILE WALL
 US ROUTE 30 (LINCOLN HIGHWAY)
 OVER LILY CACHE CREEK
 WILL COUNTY
 F.A.P. ROUTE 0575 STATION 31+00.61
 SEC. 14BR
 NEW STRUCTURE NO. 099-W012
 DATE 03/24/05

LONCO, INC.
 CONSULTING ENGINEERS 700 EAST DIEHL ROAD, SUITE 180
 NAPERVILLE, ILLINOIS 60563 (630) 577-9100