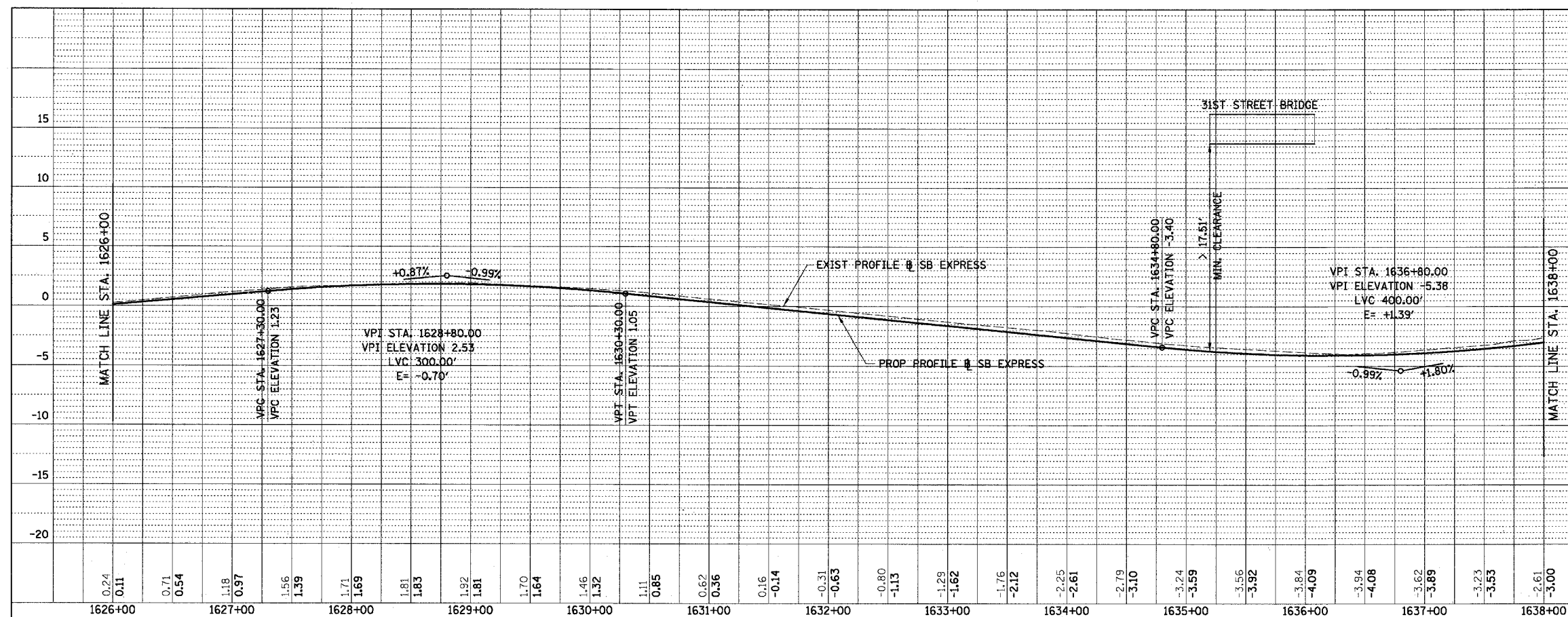
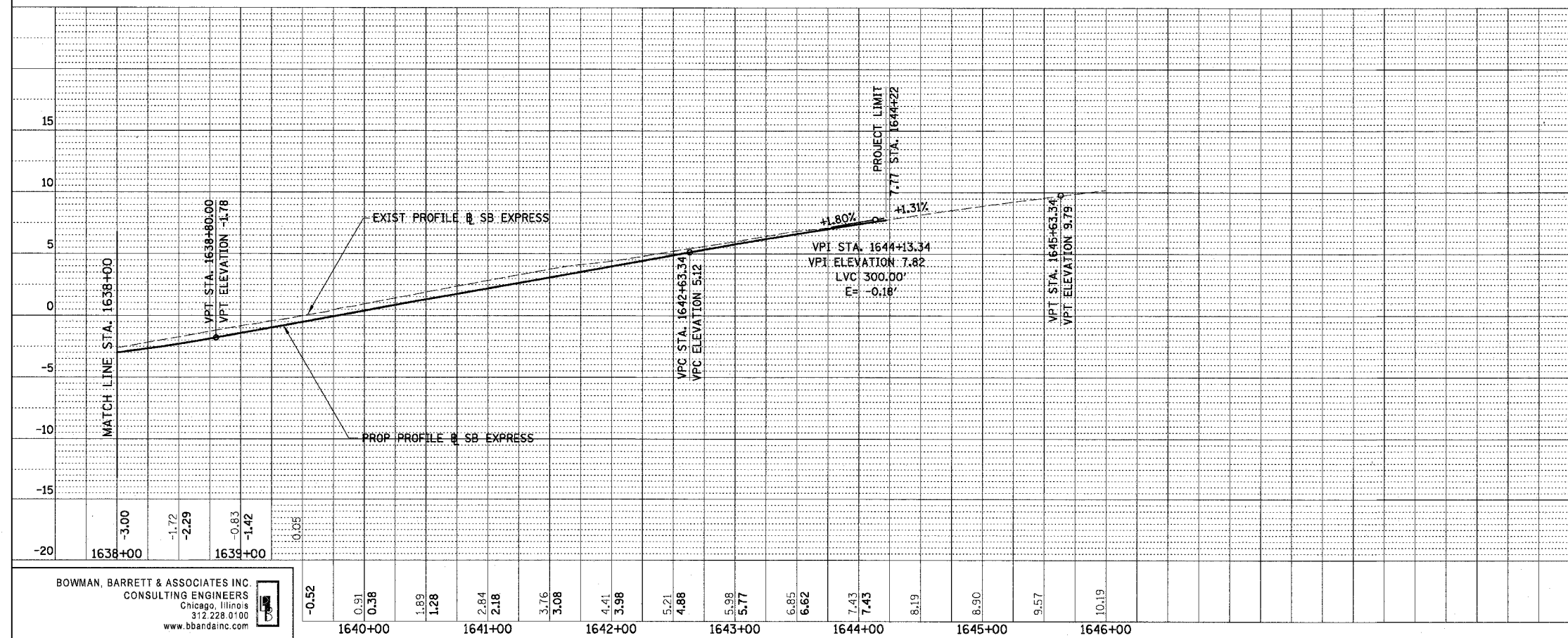


F.A.I.	SECTION	COUNTY	TOTAL SHEETS	SHEET NO.
94/90	*	COOK	598	81
STA. 1626+00		TO STA.		-
FED. ROAD DIST. NO.		ILLINOIS	FED. AID PROJECT	

PLAN	REVISIONS	DATE
NO. 1	BY	
NO. 2	DATE	
NO. 3	BY	
NO. 4	DATE	
NO. 5	BY	
NO. 6	DATE	



PLAN	REVISIONS	DATE
NO. 1	BY	
NO. 2	DATE	
NO. 3	BY	
NO. 4	DATE	
NO. 5	BY	
NO. 6	DATE	



BOWMAN, BARRETT & ASSOCIATES INC.  
CONSULTING ENGINEERS  
Chicago, Illinois  
312.228.0100  
www.bbainc.com

REVISIONS	DATE
NAME	

ILLINOIS DEPARTMENT OF TRANSPORTATION  
F.A.I. 94/90 (DAN RYAN EXPRESSWAY)  
31ST STREET TO 71ST STREET  
SB EXPRESS LANE RECONSTRUCTION  
EXISTING AND PROPOSED PROFILE  
SOUTHBOUND STA. 1626+00 TO STA.

SCALE: 1"=25' VERT  
1"=50' HORIZ  
DATE: 07/07/05  
DRAWN BY: RA  
CHECKED BY: KR

PRO-11