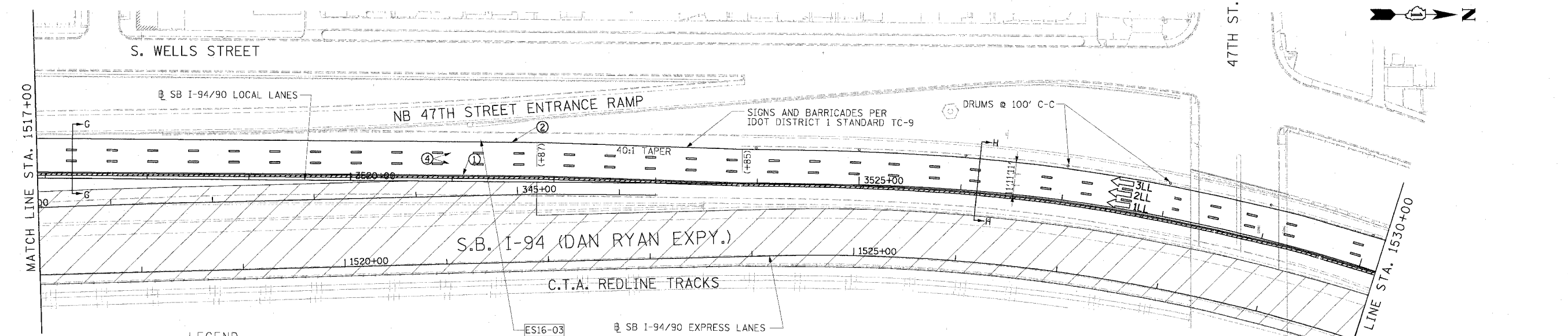
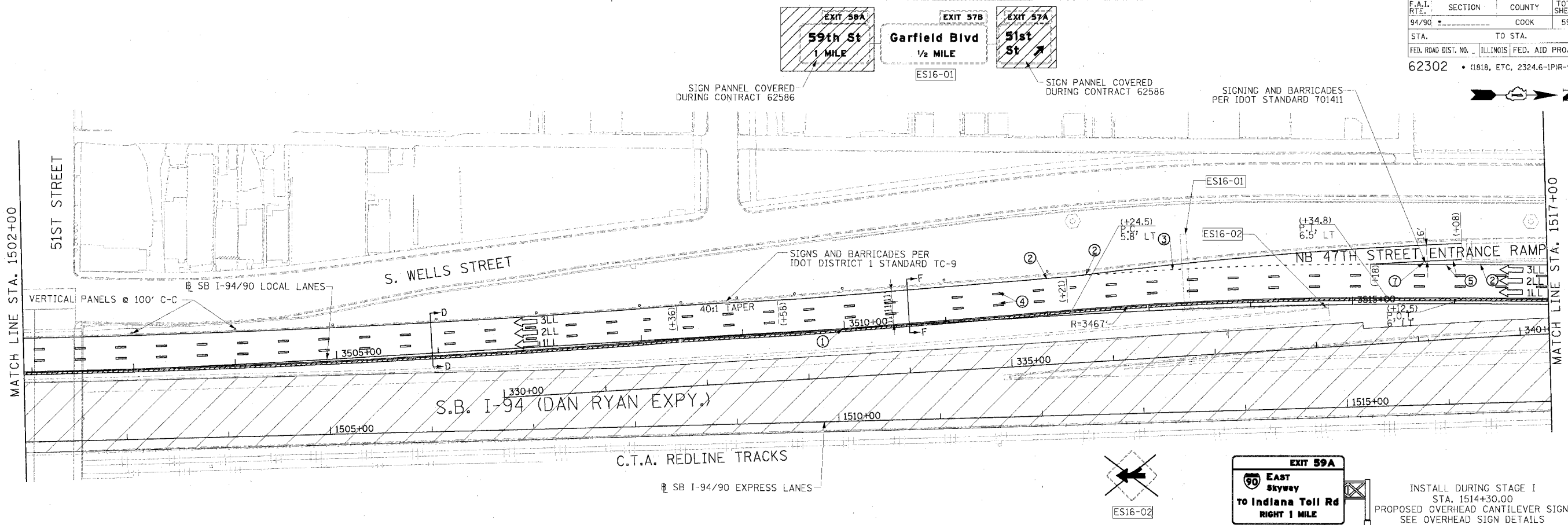


F.A.I. RTE.	SECTION	COUNTY	TOTAL SHEETS	SHEET NO.
94/90		COOK	598	100
STA.	TO STA.			
FED. ROAD DIST. NO.	ILLINOIS FED. AID PROJECT			
62302	1818, ETC, 2324.6-1P1R-9			



LEGEND

- WORK ZONE
- TEMPORARY PAVEMENT
- TRAFFIC LANE & DIRECTION OF TRAFFIC
- DRUM OR BARRICADE TYPE II WITH STEADY BURN LIGHT
- IMPACT ATTENUATORS, TEMPORARY (NON-REDIRECTIVE), TEST LEVEL 3
- BARRICADE TYPE III
- TEMPORARY CONCRETE BARRIER
- EXISTING SIGN
- TEMPORARY SIGN
- ① LINE 4" (YELLOW EDGE LINE)
- ② LINE 4" (WHITE EDGE LINE)
- ③ LINE 4" (SKIP DASH, 6' SKIP - 2' DASH, WHITE)
- ④ LINE 5" (SKIP DASH, 30' SKIP - 10' DASH, WHITE)
- ⑤ LINE 8" (WHITE GORE LINE)
- ⑥ LINE 8" (SKIP DASH, 12' SKIP - 3' DASH, WHITE)
- ⑦ LINE 12" (DIAGONAL, 30' C-C)
- ⑧ LINE 12" (DIAGONAL, 500' C-C)
- ⑨ LETTERS AND SYMBOLS

NOTE:
ALL PAVEMENT MARKINGS ON THIS SHEET ARE PAVEMENT MARKING TAPE, TYPE III UNLESS OTHERWISE NOTED.

STATIONING
+** STATION PROVIDED FROM THE SB I-90/94 EXPRESS LANES
(+**) STATION PROVIDED FROM THE SB I-90/94 LOCAL LANES

Edwards AND Kelcey
ONE NORTH FRANKLIN
CHICAGO, IL 60606
PHONE: (312) 251-3000
FAX: (312) 251-3015
WEB: WWW.EKCORP.COM

REVISIONS	
NAME	DATE

ILLINOIS DEPARTMENT OF TRANSPORTATION
F.A.I. 94/90 (DAN RYAN EXPRESSWAY)
31ST STREET TO 71ST STREET
SB EXPRESS LANE RECONSTRUCTION
MAINTENANCE OF TRAFFIC PLAN
SOUTHBOUND STA. 1502+00 TO STA. 1530+00
STAGE 1
SCALE: 1"=50'
DATE: 7/1/05
DRAWN BY: TAI
CHECKED BY: PJM

MOT-15
06/24/2005 09:44:32 AM