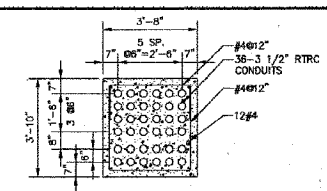
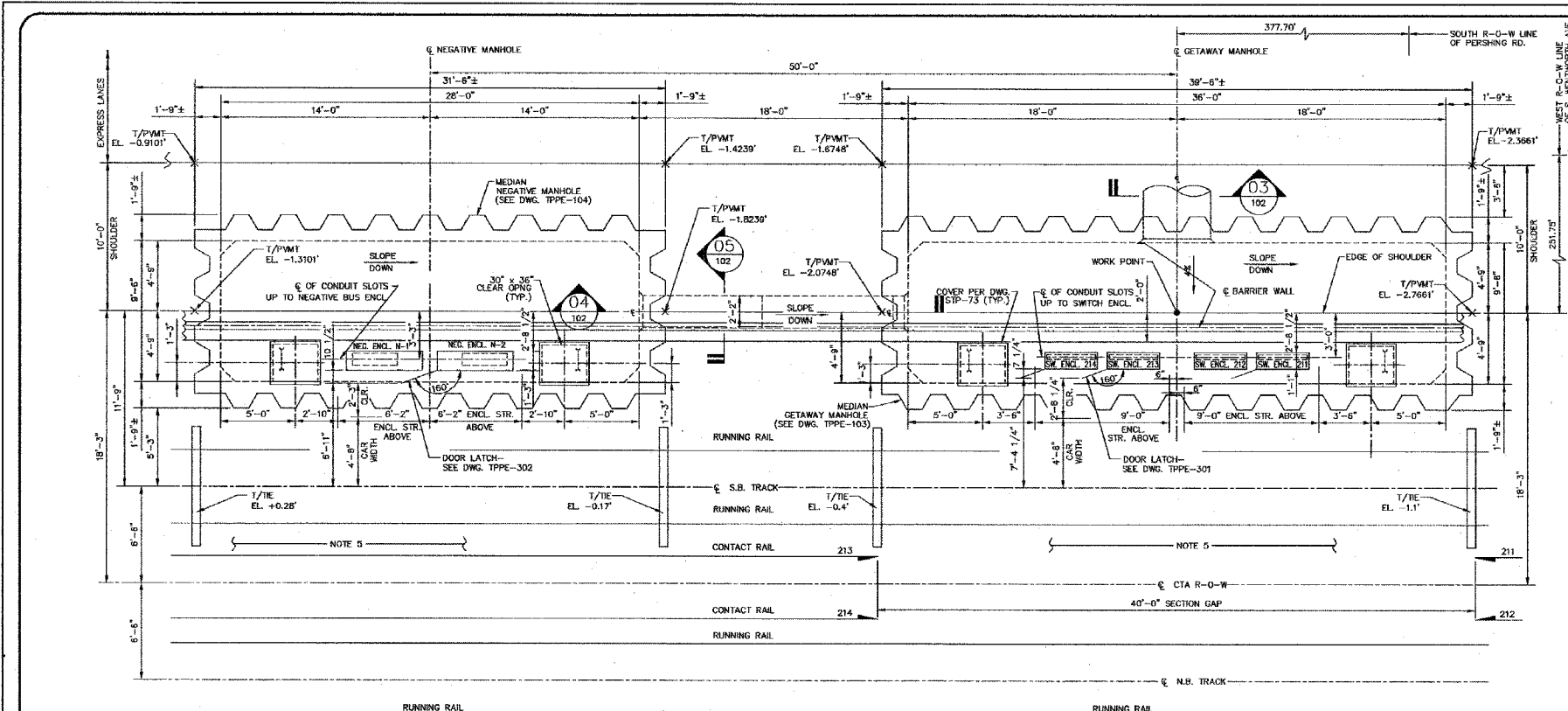
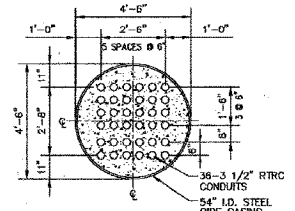


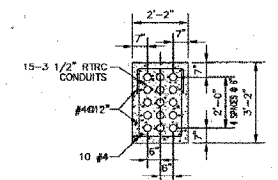
F.A.I.	SECTION	COUNTY	TOTAL SHEETS	SHEET NO.
94/90		COOK	598	258
STA.	TO STA.			
FED. ROAD DIST. NO.	ILLINOIS FED. AID PROJECT			
62302	*1818, ETC, 2324.6-1PR-9			



SECTION 02 SCALE: 3/8"=1'-0"

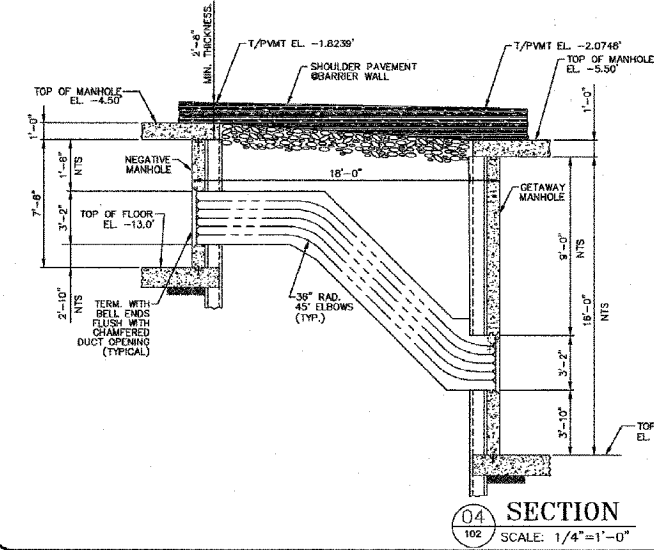


SECTION 03 SCALE: 3/8"=1'-0"

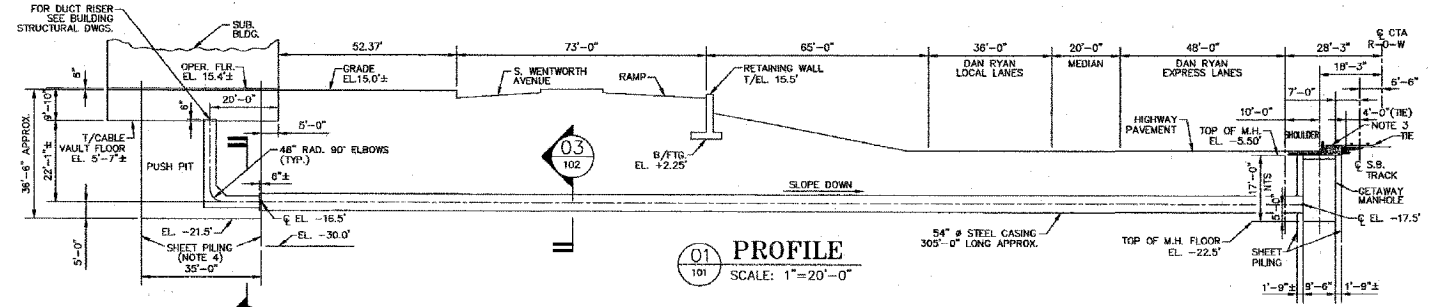


SECTION 05 SCALE: 3/8"=1'-0"

ENLARGED PLAN (TPPE-101) SCALE: 1/4"=1'-0"



SECTION 04 SCALE: 1/4"=1'-0"



PROFILE 01 SCALE: 1"=20'-0"

- NOTES:
- ALL EXISTING DATA SHOWN IS OBTAINED FROM 100' PLANS AND/OR FIELD MEASUREMENTS. CONTRACTOR SHALL VERIFY ALL DATA.
  - ALL ELEVATIONS SHOWN ARE BASED ON C.C.D. (CHICAGO CITY DATUM), ARCH. 0'-0"=15.4' CDD.
  - TOP OF SLAB ON TOP OF MANHOLES WITHIN CTA R-O-W SHALL BE APPROXIMATELY EVEN WITH TOP OF TIES (SEE MANHOLE DWGS).
  - CONTRACTOR SHALL DESIGN PUSH PIT SHEET PILING TO SUIT SOIL CONDITIONS. AFTER DUCT BANK RISER IS INSTALLED CUT TOP OF SHEET PILING 12" DOWN FROM BOTTOM OF SUBSTATION SLAB ELEVATION AND COMPLETELY BACKFILL COVER DAM PUSH PIT WITH CA-6 GRAVEL, COMPACTED TO 95% MODIFIED PROCTOR.
  - FOR DUCTRANKS AND CABLES TO CONTACT RAILS AND IMPEDANCE BONDS SEE HNTB'S "TP" DWGS.

In Charge: HS  
 Designed By: DP  
 Drawn By: VA  
 Checked By: DP  
 Approved By: HS

Laramore, Douglass And Popham, Inc.  
 Consulting Engineers  
 IN ASSOCIATION WITH  
 Rubino & Mesa Engineers, Inc.  
 Architects • Engineers • Construction Management  
 Environmental Design International  
 Geotechnical Engineering Corporation  
 Ground Engineering Consultants

No.	Date	Revision	App'd
1	05-27-03	ISSUED FOR BIDS	HS



Substation Enhancement Dan Ryan - Red Line  
 PE, 42, 50, PR & 79  
**PERSHING SUBSTATION**  
 DC CABLE GETAWAY LAYOUT-PLAN & SECTIONS  
 Scale: AS NOTED Date: 05-27-03 J.O. No.:

REVISIONS	NAME	DATE

ILLINOIS DEPARTMENT OF TRANSPORTATION  
 F.A.I. 94/90 (DAN RYAN EXPRESSWAY)  
 31ST STREET TO 71ST STREET  
 SB EXPRESS LANE RECONSTRUCTION  
 CTA PERSHING  
 SUBSTATION PLANS  
 SCALE: NTS DRAWN BY: BDC  
 DATE: 07/07/05 CHECKED BY: JDC

BOWMAN, BARRETT & ASSOCIATES INC.  
 CONSULTING ENGINEERS  
 Chicago, Illinois  
 312.228.0100  
 www.bbainc.com

FOR INFORMATION ONLY