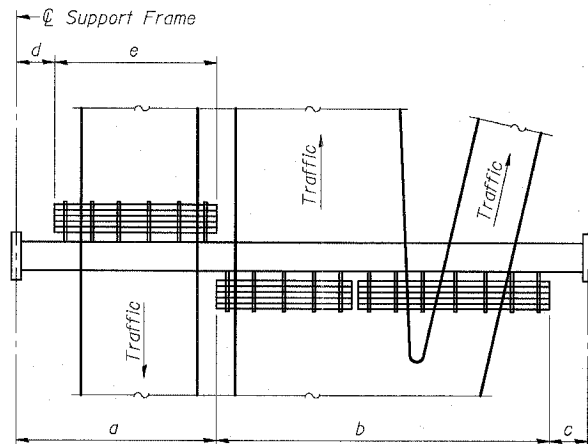
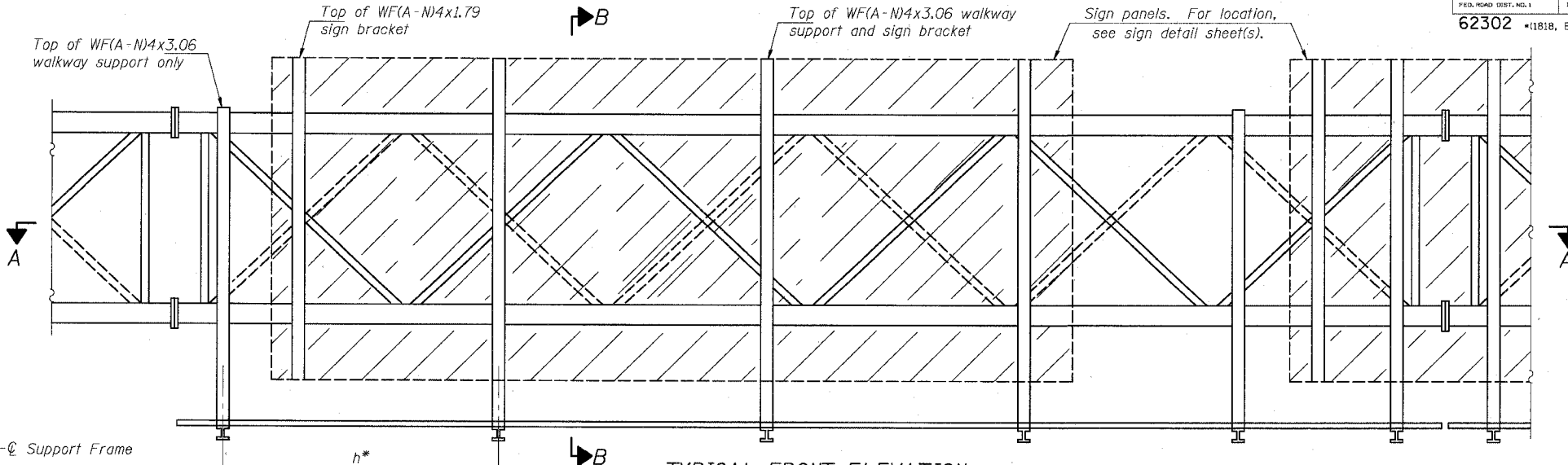


STATE OF ILLINOIS  
DEPARTMENT OF TRANSPORTATION

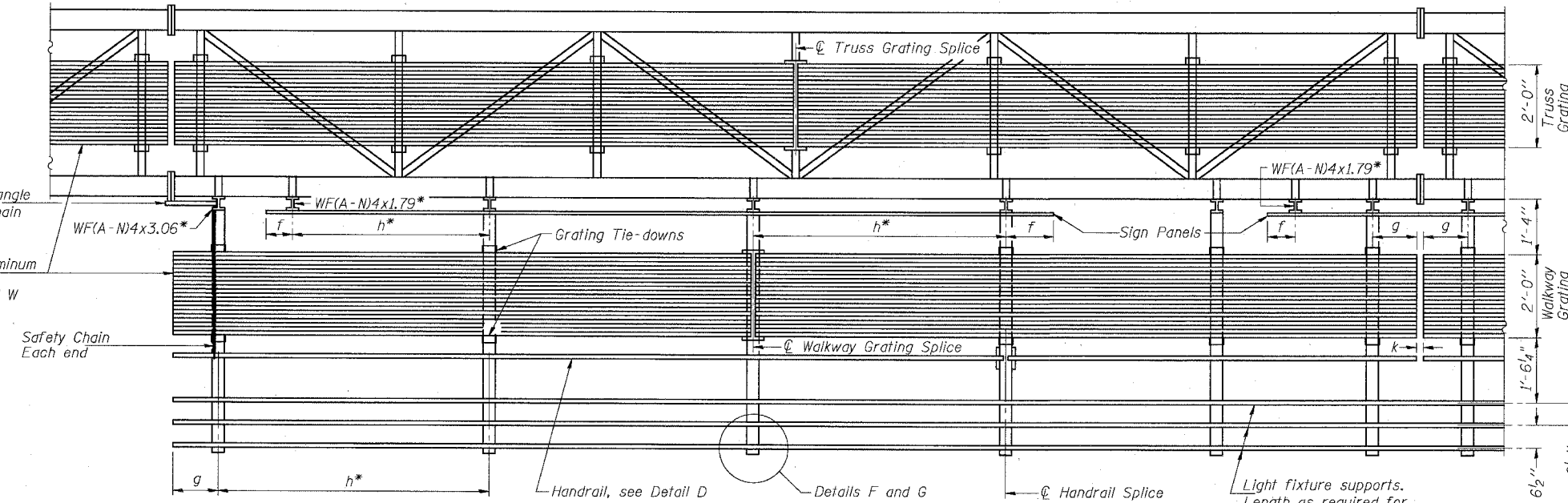
ROUTE NO.	SECTION	COUNTY	TOTAL SHEETS	SHEET NO.
94/90	*	COOK	598	317
FED. ROAD DIST. NO. 1		ILLINOIS	FED. AID PROJECT-	
62302		*1818, ETC, 2324.6-1PIR-9		



**PLAN**  
**WALKWAY AND HANDRAIL SKETCH**  
(Road plan beneath truss varies)



**TYPICAL FRONT ELEVATION**  
With lights and handrail omitted for clarity.  
For Section B-B, see Base Sheet OS-A-10.



**SECTION A-A**

Handrail and walkway shall span a minimum of three brackets between splices and/or gap joints.  
Place all sign and walkway brackets as close to panel points as practical.  
Grating, handrail and light support splices placed as needed.

Truss grating to facilitate inspection shall run full length (center to center of support frames) ±12" on overhead trusses.  
Cost of truss grating is included in "Overhead Sign Structure".

**BRACKET TABLE**

WF(A-N)4x1.79 or WF(A-N)4x3.06 ASTM B308, Alloy 6061-T6		
Sign Width		Number Brackets Required
Greater Than	Less Than or Equal To	
	8'-0"	2
8'-0"	14'-0"	3
14'-0"	20'-0"	4
20'-0"	26'-0"	5
26'-0"	32'-0"	6

Notes: \*Space walkway brackets WF(A-N)4x3.06 and sign brackets WF(A-N)4x1.79 for efficiency and within limits shown:

- f = 12" maximum, 4" minimum (End of sign to  $\phi$  of nearest bracket)
- g = 12" maximum, 4" minimum (End of walkway grating to  $\phi$  of nearest support bracket)
- h = 6'-0" maximum ( $\phi$  to  $\phi$  sign and/or walkway support brackets, WF(A-N)4x1.79 or WF(A-N)4x3.06)
- k = 2" maximum gap between adjacent walkway grating sections and handrail ends

\*\*If walkway bracket at safety chain location is behind sign, add angle to bracket, see Alternate Safety Chain Attachment on Base Sheet OS-A-11.

For Details T and W, Section B-B and Grating Splice Details, see Base Sheet OS-A-10.  
For Details D, F, G and P and Handrail Splice Details, see Base Sheet OS-A-11.

Structure Number	Station	a	b	c	d	e	Walkway, Grating and Handrail Lengths
IS0161094R056.32	3550+87.27	10.37'	52.0'	7.46'	-	-	52.0'
IS0161094R055.83	3576+87.34	10.37'	52.0'	7.46'	-	-	52.0'
IS0161094R055.33	3603+12.34	10.73'	52.0'	7.10'	-	-	52.0'

DESIGNED	MSA	20
CHECKED	AS	EXAMINED
DRAWN	MD	PASSED
CHECKED	MSA	ENGINEER OF STRUCTURAL SERVICES
		ENGINEER OF BRIDGES AND STRUCTURES

NUMBER	REVISION	DATE

SGN-20

**OVERHEAD SIGN STRUCTURES  
ALUMINUM WALKWAY DETAILS**

ILLINOIS DEPARTMENT OF TRANSPORTATION  
F.A.I. 94/90 (DAN RYAN EXPRESSWAY)  
31ST STREET TO 71ST STREET  
SB EXPRESS LANE RECONSTRUCTION  
OVERHEAD SIGN STRUCTURES