

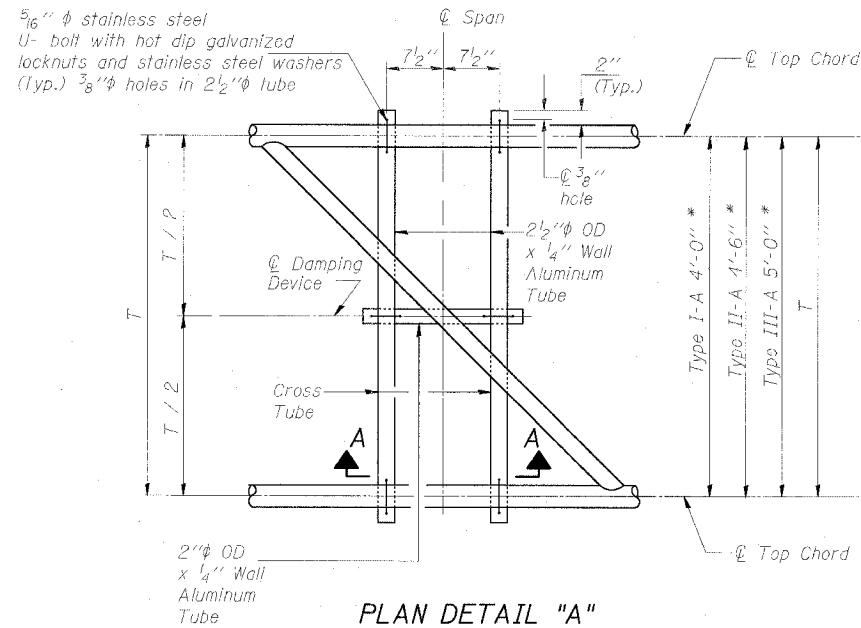
STATE OF ILLINOIS
DEPARTMENT OF TRANSPORTATION

* Center of horizontal to center of splice dimension may vary. Verify before drilling holes in mounting tube.

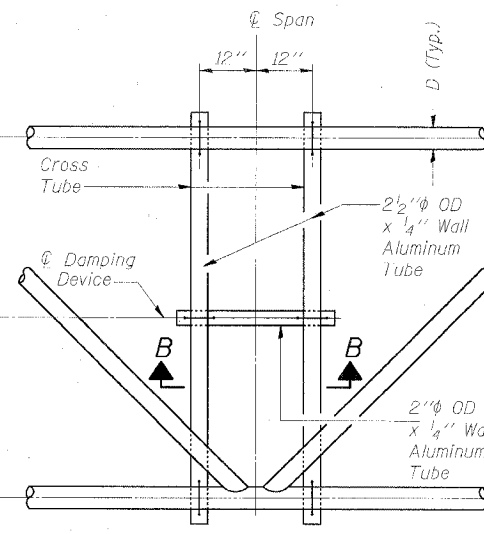
ROUTE NO.	SECTION	COUNTY	SHEET NO.	SHEET NO.
90/94	*	COOK	598	343
FED. ROAD DIST. NO. 7		FED. AID PROJECT		

(1818, ETC, 2324.6-1P) R-9

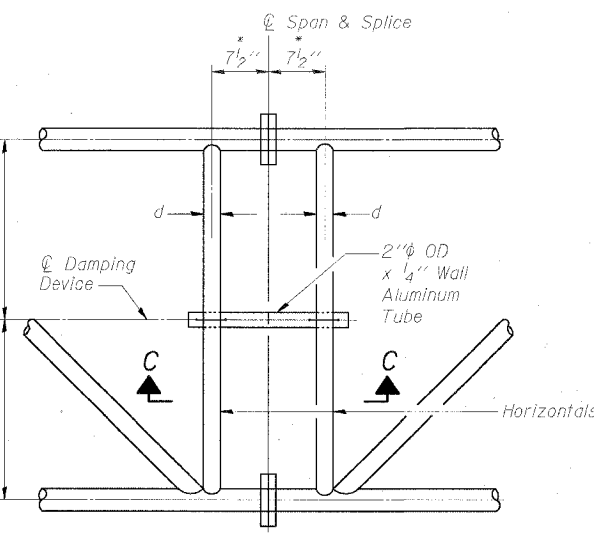
62302



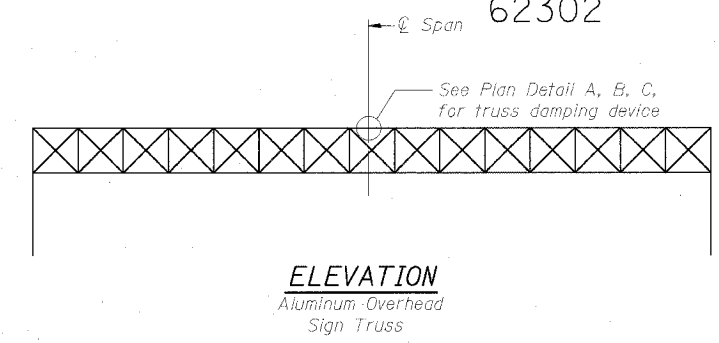
PLAN DETAIL "A"
Span BETWEEN PANEL POINTS



PLAN DETAIL "B"
Span AT PANEL POINT



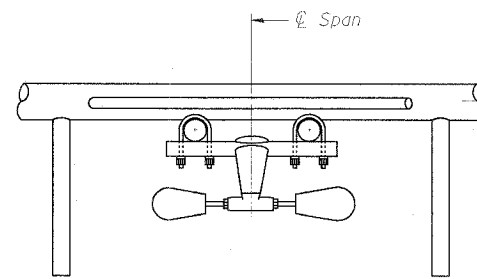
PLAN DETAIL "C"
Span AT CHORD SPLICE



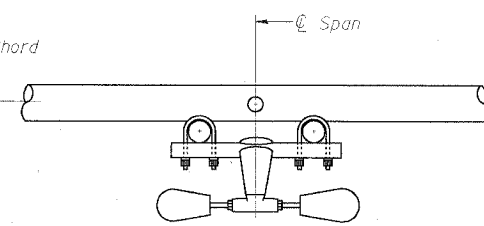
ELEVATION
Aluminum Overhead Sign Truss

NOTES

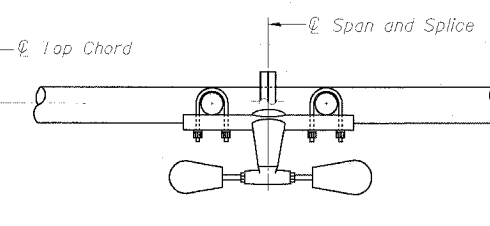
Damper: One damper per truss.
(31 lbs. Stockbridge-Type Aluminum)
Cost included in "Overhead Sign Structure..."
Materials: Aluminum tubes shall be ASTM B221 alloy 6061 temper T6. Cost included in "Overhead Sign Structure..."



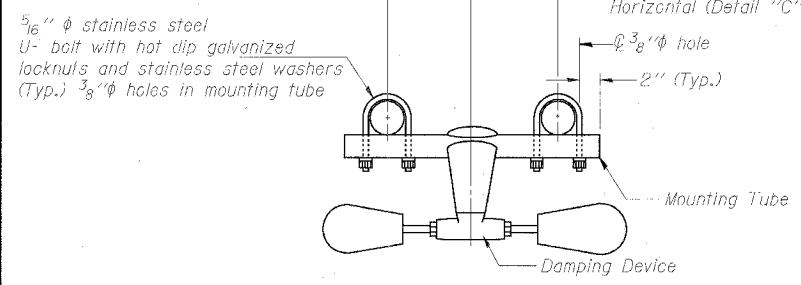
SECTION A-A



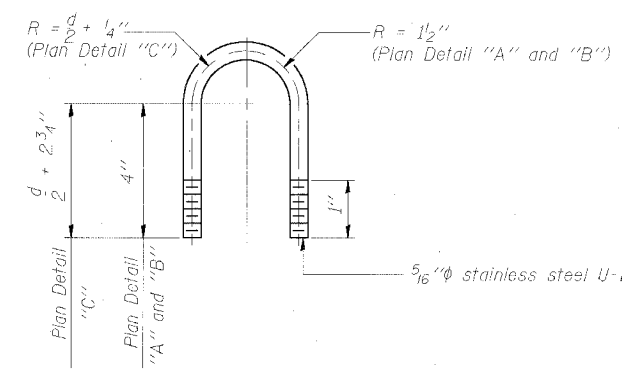
SECTION B-B



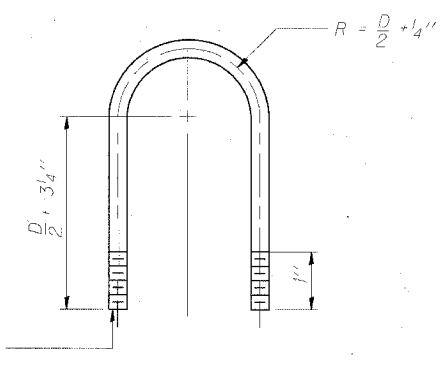
SECTION C-C



TRUSS DAMPING DEVICE CONNECTION DETAIL
(Typical)



DAMPING DEVICE MOUNTING TUBE U-BOLT DETAIL
(Typical)



TOP CHORD TO CROSS TUBE U-BOLT DETAIL
(Typical - Detail "A" and "B")

DESIGNED - SWANG	20
CHECKED - JAL	EXAMINED
DRAWN -	PASSED
CHECKED -	ENGINEER OF STRUCTURAL SERVICES
	ENGINEER OF BRIDGES AND STRUCTURES

OS-A-D 11/1/2002

OVERHEAD SIGN STRUCTURE DAMPING DEVICE
F.A.I. 94/90 (DAN RYAN EXPRESSWAY)
31st STREET TO 71st STREET
(SB Express Lanes)

06/24/2005 09:51:53 PM P:\40466\STRUCTURE\62302\01_SIGN\ASST\62302.dwg