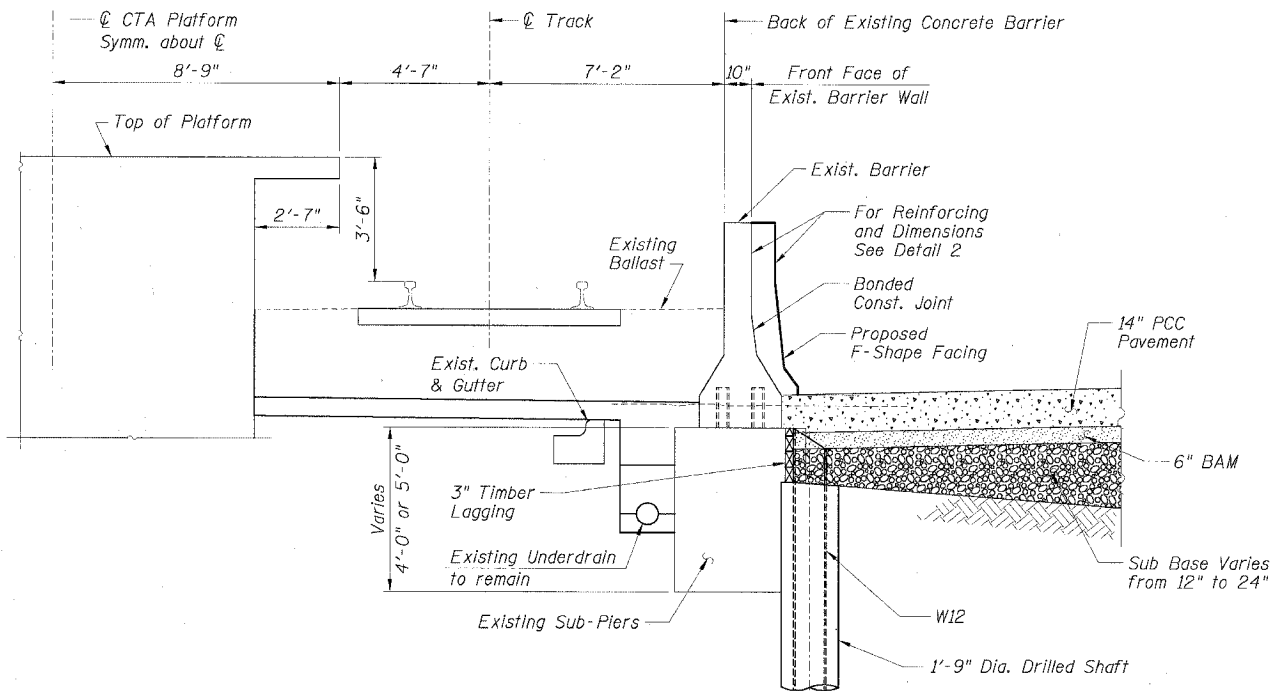
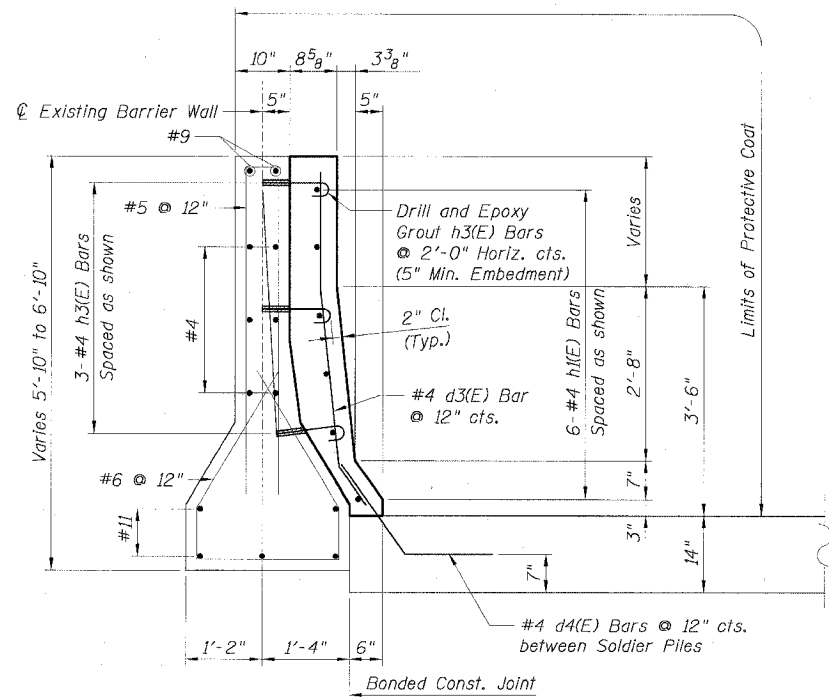


STATE OF ILLINOIS
DEPARTMENT OF TRANSPORTATION

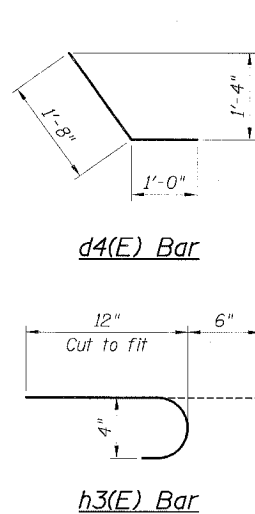
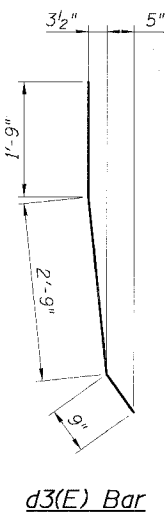
F.A.I. RTE.	SECTION	COUNTY	TOTAL SHEETS	SHEET NO.
90/94		COOK	598	412
STA.	TO STA.			
FED. ROAD DIST. NO. 1	ILLINOIS	FED. AID PROJECT		
• (1818, ETC, 2324.6-IPR-9				62302



TYPICAL SECTION
AT STATION PLATFORM



DETAIL 2



LEGEND:

	PCC Pavement
	BAM
	Sub Base
	Earth

NOTES:

1. Drilling and grouting of #4 h3(E) bars shall be in accordance with Section 584 of the Standard Specifications.
2. #4 d4(E) bars shall be seated in their final position prior to the placement of the concrete shoulder. Bars shall not be mucked into place.
3. The cost of drilling holes, furnishing and placing Epoxy Grout and setting #4 h3(E) bars shall be included in the cost per cubic yard for Concrete Structures.
4. Provide joints in facing to match those in the existing barrier.

BILL OF MATERIAL

Bar	No.	Size	Length	Shape
d3(E)		#4	5'-3"	—
d4(E)		#4	2'-8"	—
h1(E)		#4		—
h3(E)		#4	1'-6"	—
Item	Unit	Quantity		
Furnishing Soldier Piles, W12x...	Foot			
Drilling and Setting				
Soldier Piles (in Soil)	Cu. Ft.			
Untreated Timber Lagging	Sq. Ft.			
Reinforcement Bars,				
Epoxy Coated	Lbs.			
Concrete Structures	Cu. Yd.			
Protective Coat	Sq. Yd.			

CTE AECOM

C.T.E.
390 East Wacker Drive, Suite 600, Chicago, Illinois 60601-2076
T: 312.588.0200 F: 312.588.1133 www.cteaec.com

REVISIONS	
NAME	DATE

Sheet B4 of 18
ILLINOIS DEPARTMENT OF TRANSPORTATION
F.A.I. 90/94 (DAN RYAN EXPRESSWAY)
EXISTING BARRIER WALL MODIFICATIONS
AT CTA STATIONS
PROPOSED T/S SHOULDER AT OR ABOVE EXISTING
TYPICAL SECTIONS & DETAILS
SCALE: None DRAWN BY: KWT
DATE: JULY 7, 2005 CHECKED BY: RDP

P:\P40465\STRUCTURE&L_Dwg\Struct_62302\03_CTA-Barrier-RT050624.ctb