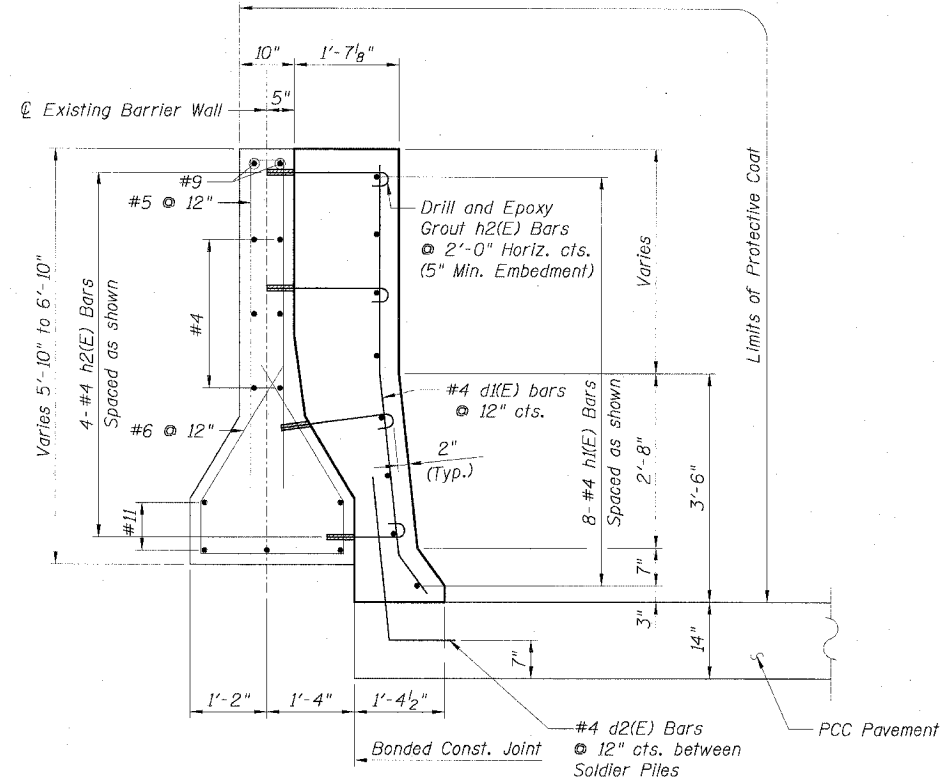


STATE OF ILLINOIS
DEPARTMENT OF TRANSPORTATION

F.A.I. R.T.E.	SECTION	COUNTY	TOTAL SHEETS	SHEET NO.
90/94	*	COOK	598	424B
STA.		TO STA.		
FED. ROAD DIST. NO. 1		ILLINOIS FED. AID PROJECT		
• (1818, ETC, 2324.6-1)R-9		62302		



DETAIL 1

BILL OF MATERIAL

Bar	No.	Size	Length	Shape
dx(E)		#4	X'-4"	┌
dx(E)		#4	X'-6"	└
hx(E)		#4		—
hx(E)		#4	X'-4"	└
Item			Unit	Quantity
Furnishing Soldier Piles, W12x			Foot	
Drilling and Setting				
Soldier Piles (in Soil)			Cu. Ft.	
Untreated Timber Lagging			Sq. Ft.	
Concrete Removal			Cu. Yd.	
Reinforcement Bars, Epoxy Coated			Lbs.	
Concrete Structures			Cu. Yd.	
Protective Coat			Sq. Yd.	

NOTES:

1. Drilling and grouting of #4 h2(E) bars shall be in accordance with Section 584 of the Standard Specifications.
2. #4 d2(E) bars shall be seated in their final position prior to the placement of the concrete shoulder. Bars shall not be mucked into place.
3. The cost of drilling holes, furnishing and placing Epoxy Grout and setting #4 h2(E) bars shall be included in the cost per cubic yard for Concrete Structures.
4. Provide joints in facing to match those in the existing barrier.

LEGEND:

	Concrete Removal
	PCC Pavement
	BAM
	Sub Base
	Earth

REVISIONS	
NAME	DATE

ILLINOIS DEPARTMENT OF TRANSPORTATION
F.A.I. 90/94 (DAN RYAN EXPRESSWAY)
**EXISTING BARRIER WALL MODIFICATIONS
AT CTA STATIONS**
**PROPOSED T/SOULDER BELOW EXISTING
REFACED BARRIER TO NEW SIGN STRUCTURE
TRANSITION DETAILS**
SCALE: None DRAWN BY: KWT
DATE: JULY 7, 2005 CHECKED BY: RDP

Sheet B18 of 18

CTE AECOM

CTE
300 East Madison Drive, Suite 600, Chicago, Illinois 60601-2076
T 312.336.0900 F 312.336.1109 www.cteaecom.com

6/24/2005 2:38:51 PM