

F.A.P. RTE.	SECTION	COUNTY	TOTAL SHEETS	SHEET NO.
066	21 (B&G) R	MCHENRY	66	20
STA.	85+00	TO STA.	105+00	
FED. ROAD DIST. NO.	ILLINOIS	FED. AID PROJECT		

#62391

PRE STAGE II WORK

1. ADD TEMPORARY PAVEMENT WIDENING STA. 99+00 TO STA. 106+20 LT AND STA. 112+90 TO STA. 120+10 LT.

MAJOR WORK STAGE II

1. SHIFT TRAFFIC FROM STAGE I LANES TO STAGE II LANES (WEST SIDE LANES).
2. REMOVAL OF INLET IS INCIDENTAL TO REMOVAL STRUCTURE AT STA. 107+00. REMOVAL OF BULKHEAD AND TEMPORARY CULVERT ARE INCIDENTAL TO REMOVAL OF STRUCTURE AT STA. 110+00. CONSTRUCT EASTERN PORTION OF EACH BOX CULVERT, STA. 107+00 AND STA. 110+00.
3. REMOVE, REGRADE AND RECONSTRUCT EAST PORTION OF US ROUTE 14, INCLUDING REMOVAL OF STAGE I TEMPORARY PAVEMENT WIDENING.
4. STA. 97+00 TO STA. 104+00 RT AND STA. 115+10 TO 122+10 RT REGRADE DITCH CROSS SECTION TO ORIGINAL SECTION, RECONSTRUCT AGGREGATE SHOULDER, FOLLOW EROSION & SEDIMENT CONTROL AND LANDSCAPE PLANS. RESTORE DR. AT STA. 97+50 RT.

POST STAGE II WORK

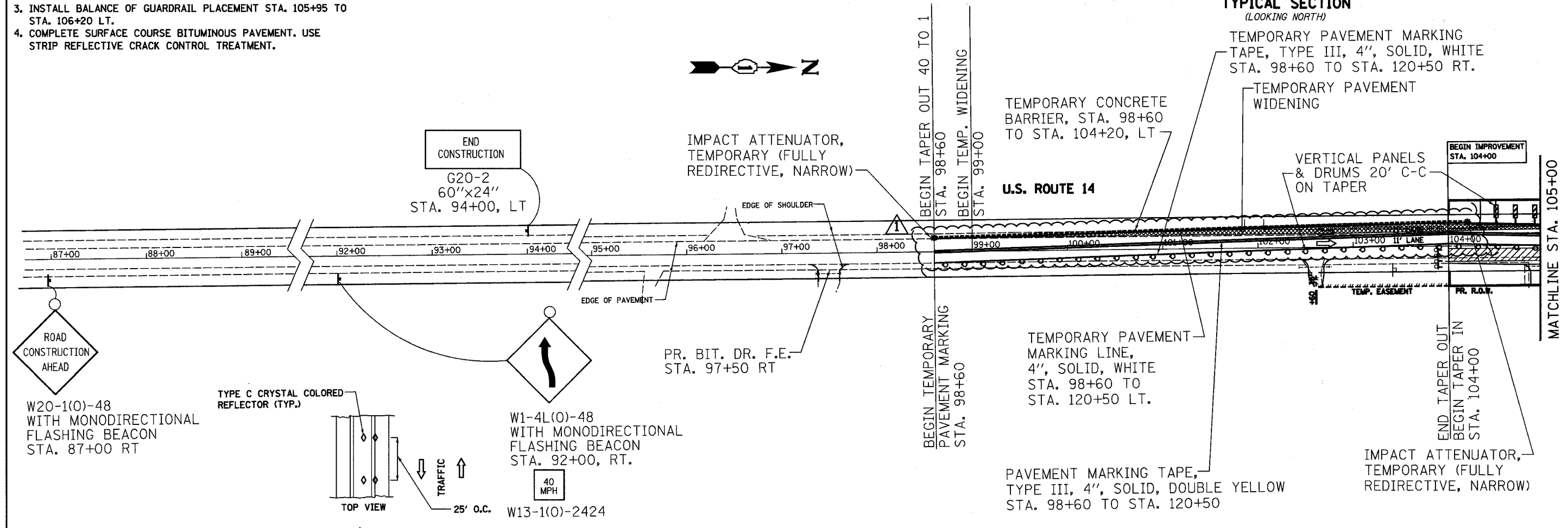
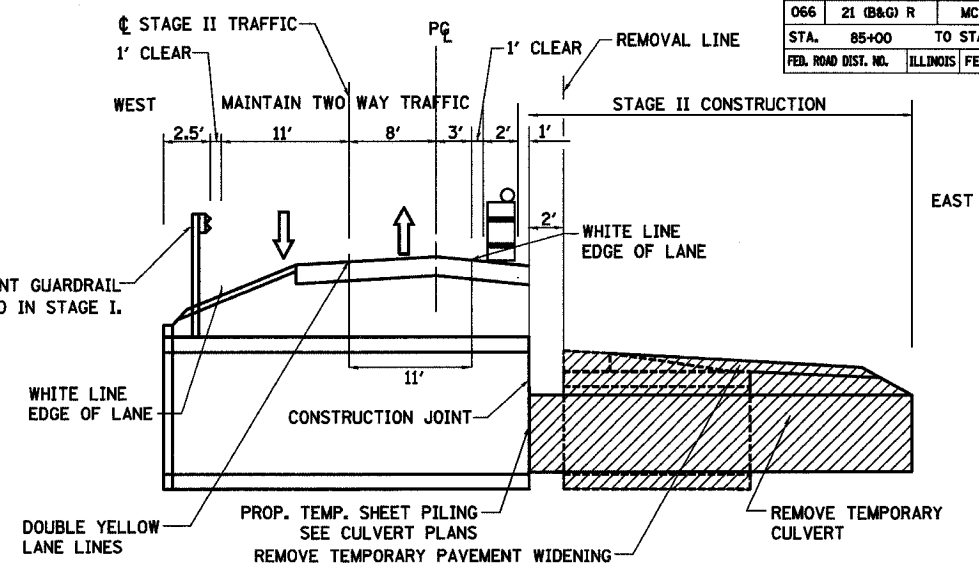
1. AFTER TRAFFIC IS SHIFTED TO NORMAL, REMOVE STAGE II TEMPORARY PAVEMENT WIDENING.
2. STA. 99+00 TO STA. 106+20 LT. AND STA. 112+90 TO STA. 120+10 LT. REGRADE DITCH TO ORIGINAL SECTION, RECONSTRUCT AGGREGATE SHOULDER, FOLLOW EROSION & SEDIMENT CONTROL AND LANDSCAPE PLANS.
3. INSTALL BALANCE OF GUARDRAIL PLACEMENT STA. 105+95 TO STA. 106+20 LT.
4. COMPLETE SURFACE COURSE BITUMINOUS PAVEMENT. USE STRIP REFLECTIVE CRACK CONTROL TREATMENT.

NOTES:

1. LOCATIONS OF ADVANCED WARNING SIGNS, TEMPORARY CONCRETE BARRIER, AND ALL OTHER TRAFFIC CONTROL DEVICES FOR STAGE II WORK SHALL BE AS SHOWN ON THIS PLAN SHEET. THIS WORK SHALL BE IN ACCORDANCE WITH HIGHWAY STANDARDS 701331 AND 702001. WORK SHALL NOT BEGIN UNTIL ALL TRAFFIC CONTROL DEVICES ARE IN PLACE AND APPROVED BY THE ENGINEER.
2. THE CONTRACTOR SHALL MAINTAIN ACCESS TO ALL PRIVATE AND COMMERCIAL ENTRANCES AND SIDESTREETS.
3. ALL ADVANCED WARNING SIGNS ON THIS SHEET ARE TO BE POST MOUNTED.
4. THE STATIONING FOR SIGNS ARE APPROXIMATE. ADJUST LOCATIONS AS NEEDED TO AVOID SIDEROADS, DRIVEWAYS, AND OTHER OBSTACLES.
5. THE MOT AS SHOWN IN THE PLANS SHALL BE INCLUDED IN COST OF TRAFFIC CONTROL AND PROTECTION, STANDARD 701331.

SYMBOLS

- CONSTRUCTION AREA
- 10" TEMPORARY PAVEMENT
- TEMPORARY CONCRETE BARRIER
- DRUMS WITH MONODIRECTIONAL STEADY BURNING LIGHTS
- SIGN
- IMPACT ATTENUATORS, TEMPORARY (FULLY REDIRECTIVE, NARROW)
- TYPE III BARRICADES WITH MONODIRECTIONAL FLASHING LIGHTS
- DIRECTION OF TRAVEL
- VERTICAL PANEL



REVISIONS	
NAME	DATE
KWN	4-11-05

ILLINOIS DEPARTMENT OF TRANSPORTATION
 U.S. ROUTE 14 OVER LAWRENCE CREEK
 MAINTENANCE OF TRAFFIC STAGE II

SCALE: 1" = 50'
 DATE: 2-10-05

DRAWN BY: CLG
 CHECKED BY: JJD



3287TRAFF2.DGN