

**CURVE COLLNB01**  
 P.I. STA= 17+15.43  
 N= 1,858,574.87  
 E= 1,177,378.55  
 Δ= 2° 07' 33"  
 D= 0° 28' 38"  
 R= 12,000.00'  
 T= 222.67'  
 L= 445.29  
 E= 2.06'  
 e= N/A  
 T.R.= N/A  
 S.E. RUN= N/A  
 P.C. STA= 14+92.76  
 N= 1,858,352.21  
 E= 1,177,377.25  
 P.T. STA= 19+38.05  
 N= 1,858,797.43  
 E= 1,177,371.58

**CURVE COLLNB02**  
 P.I. STA= 25+45.61  
 N= 1,859,404.70  
 E= 1,177,352.58  
 Δ= 1° 17' 10"  
 D= 0° 24' 33"  
 R= 14,000.00'  
 T= 157.14'  
 L= 314.27  
 E= 0.88'  
 e= N/A  
 T.R.= N/A  
 S.E. RUN= N/A  
 P.C. STA= 23+88.47  
 N= 1,859,247.63  
 E= 1,177,351.49  
 P.T. STA= 27+02.74  
 N= 1,859,561.83  
 E= 1,177,351.19

**CURVE COLLNB03**  
 P.I. STA= 28+45.20  
 N= 1,859,704.28  
 E= 1,177,349.93  
 Δ= 1° 09' 57"  
 D= 0° 24' 33"  
 R= 14,000.00'  
 T= 142.45'  
 L= 284.90  
 E= 0.72'  
 e= N/A  
 T.R.= N/A  
 S.E. RUN= N/A  
 P.C. STA= 27+02.74  
 N= 1,859,561.83  
 E= 1,177,351.19  
 P.T. STA= 29+87.65  
 N= 1,859,846.68  
 E= 1,177,345.77

**CURVE COLLSB01**  
 P.I. STA= 62+03.18  
 N= 1,858,576.31  
 E= 1,177,181.55  
 Δ= 0° 45' 55"  
 D= 0° 14' 56"  
 R= 23,000.00'  
 T= 153.61'  
 L= 307.23  
 E= 0.51'  
 e= N/A  
 T.R.= N/A  
 S.E. RUN= N/A  
 P.C. STA= 60+49.56  
 N= 1,858,422.76  
 E= 1,177,186.19  
 P.T. STA= 63+56.79  
 N= 1,858,729.78  
 E= 1,177,174.87

**CURVE COLLSB02**  
 P.I. STA= 70+53.37  
 N= 1,859,425.70  
 E= 1,177,144.56  
 Δ= 0° 22' 48"  
 D= 0° 14' 56"  
 R= 40,000.00'  
 T= 132.70'  
 L= 265.40  
 E= 0.22'  
 e= N/A  
 T.R.= N/A  
 S.E. RUN= N/A  
 P.C. STA= 69+20.67  
 N= 1,859,293.13  
 E= 1,177,150.34  
 P.T. STA= 71+86.08  
 N= 1,859,558.24  
 E= 1,177,137.91

**CURVE COLLSB03**  
 P.I. STA= 81+04.03  
 N= 1,860,475.04  
 E= 1,177,091.89  
 Δ= 8° 56' 14"  
 D= 0° 14' 56"  
 R= 1,766.00'  
 T= 138.01'  
 L= 275.46  
 E= 5.38'  
 e= N/A  
 T.R.= N/A  
 S.E. RUN= N/A  
 P.C. STA= 79+66.02  
 N= 1,860,337.20  
 E= 1,177,098.81  
 P.T. STA= 82+41.49  
 N= 1,860,610.14  
 E= 1,177,063.64

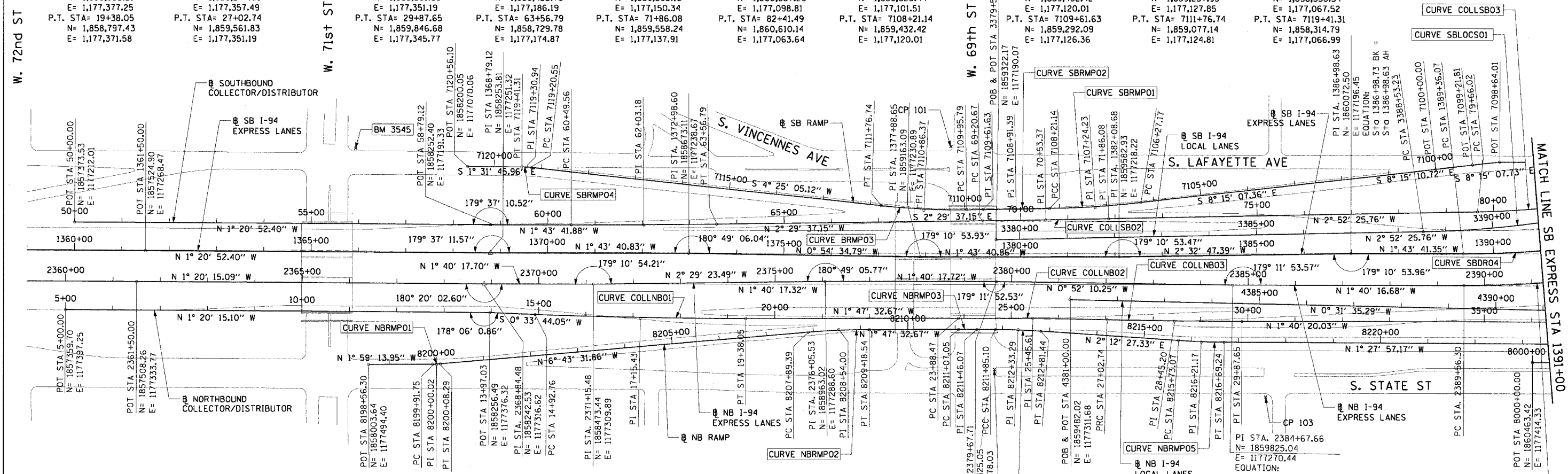
**CURVE SBRMPO1**  
 P.I. STA= 7107+24.23  
 N= 1,859,529.38  
 E= 1,177,115.44  
 Δ= 5° 33' 25"  
 D= 2° 51' 53"  
 R= 2,000.00'  
 T= 97.06'  
 L= 193.98  
 E= 2.35'  
 e= N/A  
 T.R.= N/A  
 S.E. RUN= N/A  
 P.C. STA= 7106+27.17  
 N= 1,859,625.44  
 E= 1,177,101.51  
 P.T. STA= 7108+21.14  
 N= 1,859,432.42  
 E= 1,177,120.01

**CURVE SBRMPO2**  
 P.I. STA= 7108+91.39  
 N= 1,859,362.26  
 E= 1,177,123.31  
 Δ= 0° 12' 05"  
 D= 0° 08' 36"  
 R= 39,975.44'  
 T= 70.24'  
 L= 140.48  
 E= 0.06'  
 e= N/A  
 T.R.= N/A  
 S.E. RUN= N/A  
 P.C. STA= 7108+21.14  
 N= 1,859,432.42  
 E= 1,177,120.01  
 P.T. STA= 7109+61.63  
 N= 1,859,292.09  
 E= 1,177,126.36

**CURVE SBRMPO3**  
 P.I. STA= 7110+86.37  
 N= 1,859,167.46  
 E= 1,177,131.79  
 Δ= 6° 54' 42"  
 D= 3° 49' 11"  
 R= 1,500.00'  
 T= 90.58'  
 L= 180.95  
 E= 2.73'  
 e= N/A  
 T.R.= N/A  
 S.E. RUN= N/A  
 P.C. STA= 7109+95.79  
 N= 1,859,257.95  
 E= 1,177,127.85  
 P.T. STA= 7111+76.74  
 N= 1,859,077.14  
 E= 1,177,124.81

**CURVE SBRMPO4**  
 P.I. STA= 7119+30.94  
 N= 1,858,325.18  
 E= 1,177,066.71  
 Δ= 5° 56' 51"  
 D= 28° 38' 52"  
 R= 200.00'  
 T= 10.39'  
 L= 20.76  
 E= 0.27'  
 e= N/A  
 T.R.= N/A  
 S.E. RUN= N/A  
 P.C. STA= 7119+20.55  
 N= 1,858,335.54  
 E= 1,177,067.52  
 P.T. STA= 7119+41.31  
 N= 1,858,314.79  
 E= 1,177,066.99

F.A.I. RTE.	SECTION	COUNTY	TOTAL SHEETS	SHEET NO.
90/94	2004-06BL	CODK	37	9
STA.		TO STA.		
FED. ROAD DIST. NO. 1		ILLINOIS	FED. AID PROJECT	
62807				



- BENCH MARK NO. 3528 ELEV. 16.20**  
 DESCRIPTION: CROSS CUT ON NORTHWESTERLY BOLT OF FIRE HYDRANT AT THE NORTHWEST CORNER OF 45TH ST AND WENTWORTH AVE
- BENCH MARK NO. 3530 ELEV. 18.18**  
 DESCRIPTION: CROSS CUT ON SOUTHEAST BOLT OF LIGHT POLE BASE AT THE NORTHWEST CORNER OF 51ST ST AND WELLS ST
- BENCH MARK NO. 3531 ELEV. 17.55**  
 DESCRIPTION: CROSS CUT ON NORTHEASTERLY FLANGE BOLT OF FIRE HYDRANT AT THE NORTHEAST CORNER OF GARFIELD BLVD AND WELLS ST
- BENCH MARK NO. 3532 ELEV. 18.84**  
 DESCRIPTION: HORIZONTAL BOLT ON CTA "EL" STRUCTURE, EAST SIDE OF WELLS ST ABOUT 50 FEET NORTH OF 59TH PL.
- BENCH MARK NO. 3533 ELEV. 19.71**  
 DESCRIPTION: BRASS DISK (CTA MONUMENT) AT THE SOUTHWEST CORNER OF 63RD ST AND HARVARD ST

- BENCH MARK NO. 3535 ELEV. 19.31**  
 DESCRIPTION: FOUND CROSS CUT ON SOUTHERLY FLANGE BOLT OF FIRE HYDRANT AT THE NORTHEAST CORNER OF 59TH ST AND WENTWORTH AVE
- BENCH MARK NO. 3536 ELEV. 18.37**  
 DESCRIPTION: CROSS CUT ON SOUTHEASTERLY FLANGE BOLT OF FIRE HYDRANT AT THE SOUTHEAST CORNER OF GARFIELD BLVD AND WENTWORTH AVE
- BENCH MARK NO. 3537 ELEV. 17.71**  
 DESCRIPTION: CROSS CUT ON NORTHEASTERLY FLANGE BOLT OF FIRE HYDRANT AT THE NORTHEAST CORNER OF 51ST ST AND WENTWORTH AVE
- BENCH MARK NO. 3538 ELEV. 17.31**  
 DESCRIPTION: CROSS CUT ON EASTERLY FLANGE BOLT OF FIRE HYDRANT AT THE NORTHEAST CORNER OF 47TH ST AND LASALLE ST
- BENCH MARK NO. 3544 ELEV. 19.38**  
 DESCRIPTION: CROSS CUT ON WESTERLY FLANGE BOLT OF FIRE HYDRANT AT THE NORTHWEST CORNER OF 67TH ST AND LAFAYETTE AVE
- BENCH MARK NO. 3545 ELEV. 10.53**  
 DESCRIPTION: CROSS CUT ON NORTHWEST BOLT OF LIGHT POLE BASE AT THE NORTHWEST CORNER OF 71ST ST AND LAFAYETTE AVE

**CURVE NBRMPO1**  
 P.I. STA= 8200+00.02  
 N= 1,858,147.27  
 E= 1,177,489.42  
 Δ= 4° 44' 18"  
 D= 28° 38' 52"  
 R= 200.00'  
 T= 8.27'  
 L= 16.54  
 E= 0.17'  
 e= N/A  
 T.R.= N/A  
 S.E. RUN= N/A  
 P.C. STA= 8199+91.75  
 N= 1,858,139.01  
 E= 1,177,489.70  
 P.T. STA= 8200+08.29  
 N= 1,858,155.49  
 E= 1,177,488.45

**CURVE NBRMPO2**  
 P.I. STA= 8208+54.00  
 N= 1,858,995.39  
 E= 1,177,389.40  
 Δ= 4° 55' 59"  
 D= 3° 49' 11"  
 R= 1,500.00'  
 T= 64.61'  
 L= 129.15  
 E= 1.39'  
 e= N/A  
 T.R.= N/A  
 S.E. RUN= N/A  
 P.C. STA= 8207+89.39  
 N= 1,858,931.22  
 E= 1,177,396.97  
 P.T. STA= 8209+18.54  
 N= 1,859,059.97  
 E= 1,177,387.38

**CURVE NBRMPO3**  
 P.I. STA= 8211+46.07  
 N= 1,859,287.39  
 E= 1,177,380.27  
 Δ= 0° 19' 12"  
 D= 0° 24' 36"  
 R= 13,976.00'  
 T= 39.03'  
 L= 78.05  
 E= 0.05'  
 e= N/A  
 T.R.= N/A  
 S.E. RUN= N/A  
 P.C. STA= 8211+07.05  
 N= 1,859,248.39  
 E= 1,177,381.49  
 P.T. STA= 8211+85.10  
 N= 1,859,326.41  
 E= 1,177,379.26

**CURVE NBRMPO4**  
 P.I. STA= 8212+33.29  
 N= 1,859,374.58  
 E= 1,177,378.02  
 Δ= 3° 40' 48"  
 D= 3° 49' 11"  
 R= 1,500.00'  
 T= 48.19'  
 L= 96.34  
 E= 0.77'  
 e= N/A  
 T.R.= N/A  
 S.E. RUN= N/A  
 P.C. STA= 8211+85.10  
 N= 1,859,326.41  
 E= 1,177,379.26  
 P.T. STA= 8212+81.44  
 N= 1,859,422.73  
 E= 1,177,379.88

**CURVE NBRMPO5**  
 P.I. STA= 8216+21.17  
 N= 1,859,762.21  
 E= 1,177,392.97  
 Δ= 3° 40' 25"  
 D= 3° 49' 11"  
 R= 1,500.00'  
 T= 48.10'  
 L= 96.17'  
 E= 0.77'  
 e= N/A  
 T.R.= N/A  
 S.E. RUN= N/A  
 P.C. STA= 8215+73.07  
 N= 1,859,714.14  
 E= 1,177,391.11  
 P.T. STA= 8216+69.24  
 N= 1,859,810.29  
 E= 1,177,391.74

**CURVE SBLOCS01**  
 P.I. STA= 3391+35.61  
 N= 1,860,506.29  
 E= 1,177,130.62  
 Δ= 15° 38' 54"  
 D= 2° 47' 17"  
 R= 2,055.00'  
 T= 282.39'  
 L= 561.26'  
 E= 19.31'  
 e= 5.5%  
 T.R.= 41'  
 S.E. RUN= 196'  
 P.C. STA= 3388+53.23  
 N= 1,860,224.26  
 E= 1,177,144.78  
 P.T. STA= 3394+14.48  
 N= 1,860,774.05  
 E= 1,177,040.92

**NOTES:**  
 1. AVERAGE GRID TO GROUND CONVERSION FACTOR = 1.000010988654360

REVISIONS	
NAME	DATE

ILLINOIS DEPARTMENT OF TRANSPORTATION  
 F.A.I. 90/94 (DAN RYAN EXPRESSWAY)  
 59th ST TO 47th ST (FRONTAGE ROAD)  
 CITY OF CHICAGO LIGHTING CONDUIT & FOUNDATIONS  
 WENTWORTH AVENUE

**ALIGNMENT PLAN**

SCALE: 1"=100'  
 DATE: February 11, 2005

DRAWN BY: NJH/AMM  
 CHECKED BY: JAL/MS



I:\Projects\90-94\94-06BL\94-06BL-09.dwg (PLOT) 2/11/05 10:00 AM  
 06/09/05 09:00 AM