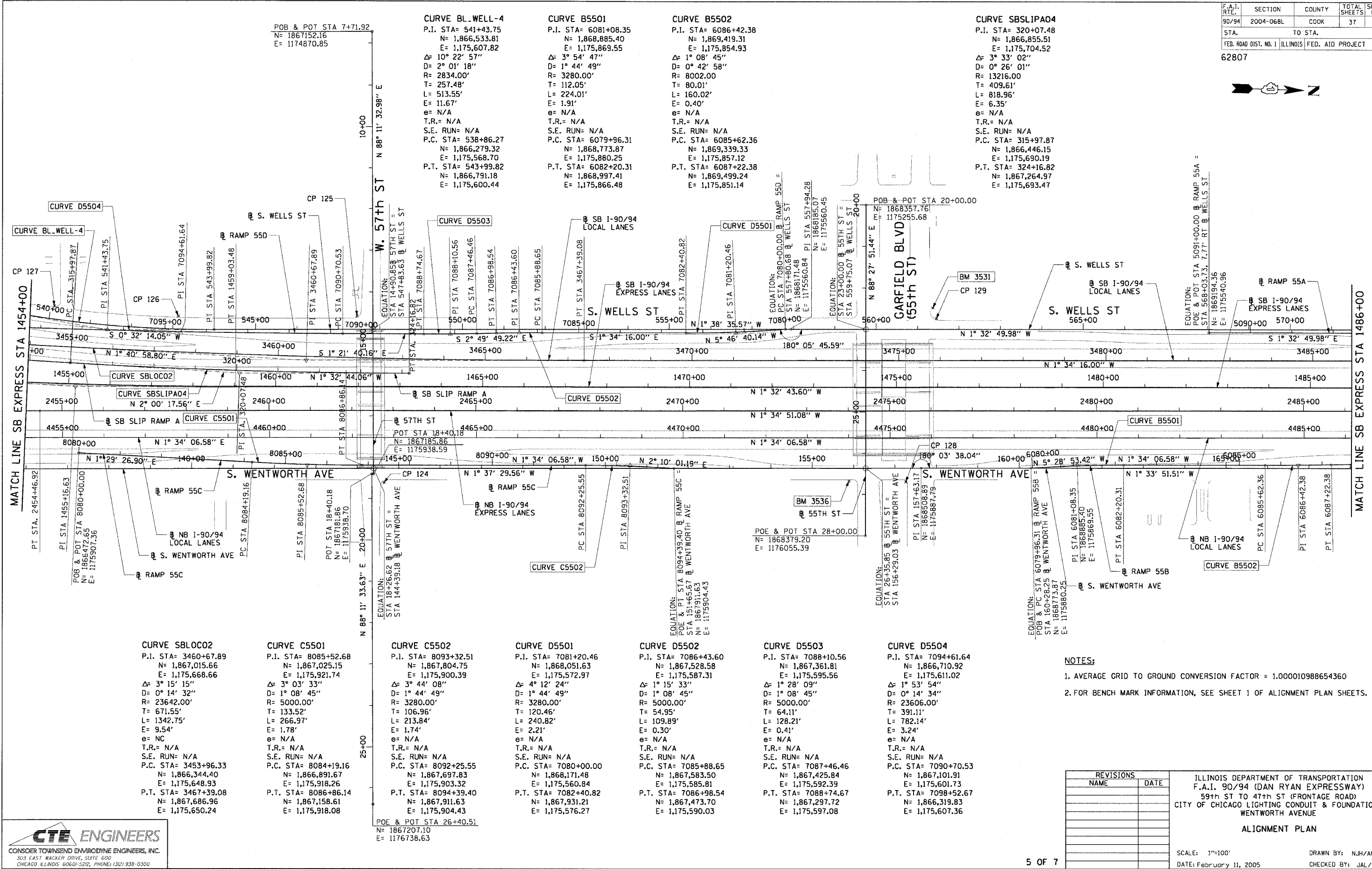
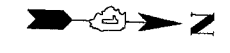


F.A.I. RT.	SECTION	COUNTY	TOTAL SHEETS	SHEET NO.
90/94	2004-06BL	COOK	37	13
STA.	TO STA.			
FED. ROAD DIST. NO. 1	ILLINOIS	FED. AID PROJECT		
62807				



CURVE SBLOC02
 P.I. STA= 3460+67.89
 N= 1,867,015.66
 E= 1,175,668.66
 Δ= 3° 15' 15"
 D= 0° 14' 32"
 R= 23642.00'
 T= 671.55'
 L= 1342.75'
 E= 9.54'
 e= NC
 T.R.= N/A
 S.E. RUN= N/A
 P.C. STA= 3453+96.33
 N= 1,866,344.40
 E= 1,175,648.93
 P.T. STA= 3467+39.08
 N= 1,867,686.96
 E= 1,175,650.24

CURVE C5501
 P.I. STA= 8085+52.68
 N= 1,867,025.15
 E= 1,175,921.74
 Δ= 3° 03' 33"
 D= 1° 08' 45"
 R= 5000.00'
 T= 133.52'
 L= 266.97'
 E= 1.78'
 e= N/A
 T.R.= N/A
 S.E. RUN= N/A
 P.C. STA= 8084+19.16
 N= 1,866,891.67
 E= 1,175,918.26
 P.T. STA= 8086+86.14
 N= 1,867,158.61
 E= 1,175,918.08

CURVE C5502
 P.I. STA= 8093+32.51
 N= 1,867,804.75
 E= 1,175,900.39
 Δ= 3° 44' 08"
 D= 1° 44' 49"
 R= 3280.00'
 T= 106.96'
 L= 213.84'
 E= 1.74'
 e= N/A
 T.R.= N/A
 S.E. RUN= N/A
 P.C. STA= 8092+25.55
 N= 1,867,697.83
 E= 1,175,903.32
 P.T. STA= 8094+39.40
 N= 1,867,911.63
 E= 1,175,904.43

CURVE D5501
 P.I. STA= 7081+20.46
 N= 1,868,051.63
 E= 1,175,572.97
 Δ= 4° 12' 24"
 D= 1° 44' 49"
 R= 3280.00'
 T= 120.46'
 L= 240.82'
 E= 2.21'
 e= N/A
 T.R.= N/A
 S.E. RUN= N/A
 P.C. STA= 7080+00.00
 N= 1,868,171.48
 E= 1,175,560.84
 P.T. STA= 7082+40.82
 N= 1,867,931.21
 E= 1,175,576.27

CURVE D5502
 P.I. STA= 7086+43.60
 N= 1,867,528.58
 E= 1,175,587.31
 Δ= 1° 15' 33"
 D= 1° 08' 45"
 R= 5000.00'
 T= 54.95'
 L= 109.89'
 E= 0.30'
 e= N/A
 T.R.= N/A
 S.E. RUN= N/A
 P.C. STA= 7085+88.65
 N= 1,867,583.50
 E= 1,175,585.81
 P.T. STA= 7086+98.54
 N= 1,867,473.70
 E= 1,175,590.03

CURVE D5503
 P.I. STA= 7088+10.56
 N= 1,867,361.81
 E= 1,175,595.56
 Δ= 1° 28' 09"
 D= 1° 08' 45"
 R= 5000.00'
 T= 64.11'
 L= 128.21'
 E= 0.41'
 e= N/A
 T.R.= N/A
 S.E. RUN= N/A
 P.C. STA= 7087+46.46
 N= 1,867,425.84
 E= 1,175,592.39
 P.T. STA= 7088+74.67
 N= 1,867,297.72
 E= 1,175,597.08

CURVE D5504
 P.I. STA= 7094+61.64
 N= 1,866,710.92
 E= 1,175,611.02
 Δ= 1° 53' 54"
 D= 0° 14' 32"
 R= 23606.00'
 T= 391.11'
 L= 782.14'
 E= 3.24'
 e= N/A
 T.R.= N/A
 S.E. RUN= N/A
 P.C. STA= 7090+70.53
 N= 1,867,101.91
 E= 1,175,601.73
 P.T. STA= 7098+52.67
 N= 1,866,319.83
 E= 1,175,607.36

- NOTES:**
- AVERAGE GRID TO GROUND CONVERSION FACTOR = 1.000010988654360
 - FOR BENCH MARK INFORMATION, SEE SHEET 1 OF ALIGNMENT PLAN SHEETS.

REVISIONS	
NAME	DATE

ILLINOIS DEPARTMENT OF TRANSPORTATION
 F.A.I. 90/94 (DAN RYAN EXPRESSWAY)
 59th ST TO 47th ST (FRONTAGE ROAD)
 CITY OF CHICAGO LIGHTING CONDUIT & FOUNDATIONS
 WENTWORTH AVENUE

ALIGNMENT PLAN

SCALE: 1"=100'
 DATE: February 11, 2005
 DRAWN BY: NJH/AMM
 CHECKED BY: JAL/MS



I:\projects\904680\904680.dwg\electrical\4-cmfr\904680.dwg
 02/02/2005 09:03:03 AM