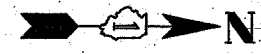


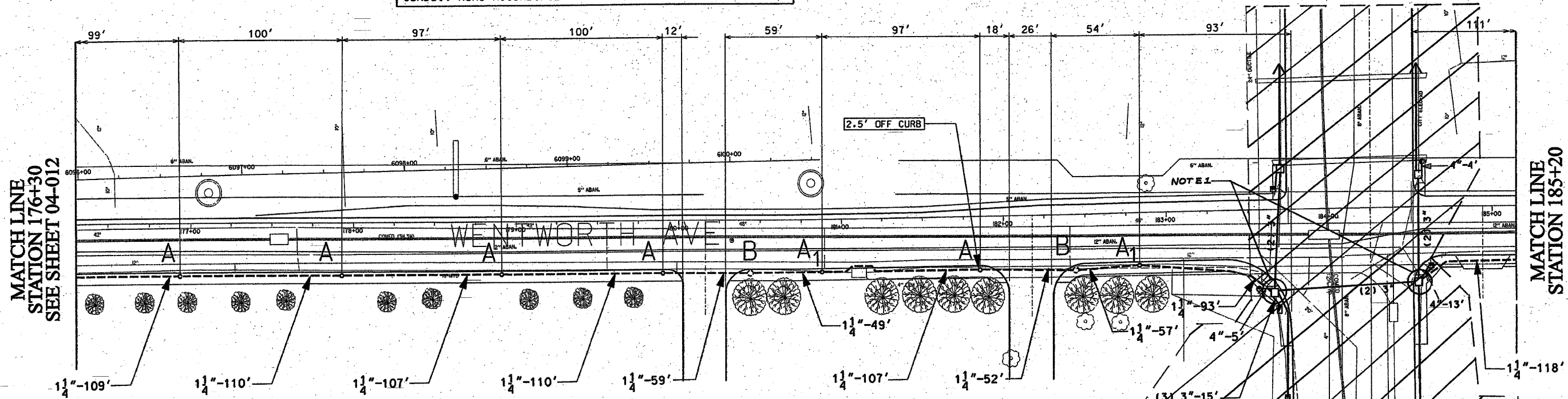
62807

F. A. RYE	SECTION	COUNTY	TOTAL SHEETS	SHEET NO
90/94	*	COOK	37	24
STA. 176+00	TO STA. 191+00			
FED. ROAD DIST. NO. 1	ILLINOIS	FED AID PROJECTS		
* 2004-068L				



NOTE: CONTRACTOR IS TO CONTACT ALL UTILITY COMPANIES TO VERIFY EXACT LOCATION OF UNDERGROUND UTILITIES PRIOR TO START OF CONSTRUCTION WORK. MOVE FOUNDATIONS AND CONDUIT RUNS ACCORDINGLY.

FOR INSTALLATION PLAN SEE SHEETS 04-022, 04-023  
FOR REMOVAL PLAN SEE SHEET 04-028, 04-029



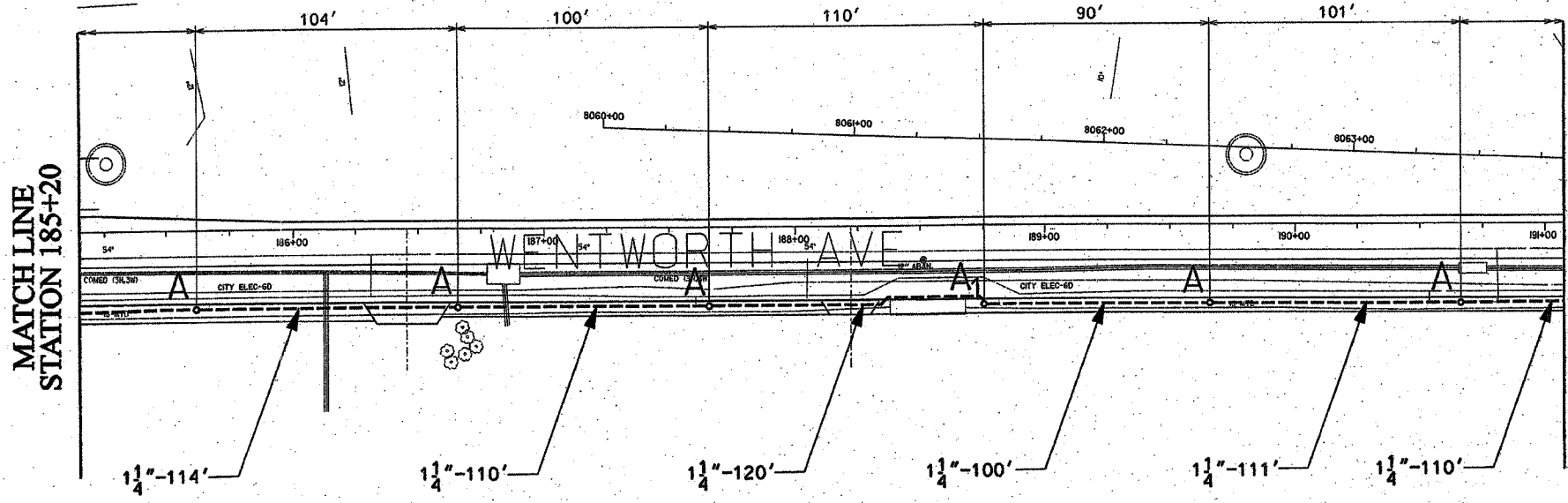
MATCH LINE  
STATION 176+30  
SEE SHEET 04-012

MATCH LINE  
STATION 185+20

1 1/4" DIRECT BORED CONDUIT SCHEDULE #80 AS PER IDOT ARTICLE 810.03  
HAND HOLE - 30" x 36" WITH 24" FRAME AND COVER  
CONCRETE FOUNDATION - 5' x 20", 10" B.C., 1" ANCHOR RODS  
OFFSET CONCRETE FOUNDATION - 5' x 20", 10" B.C., 1" ANCHOR RODS

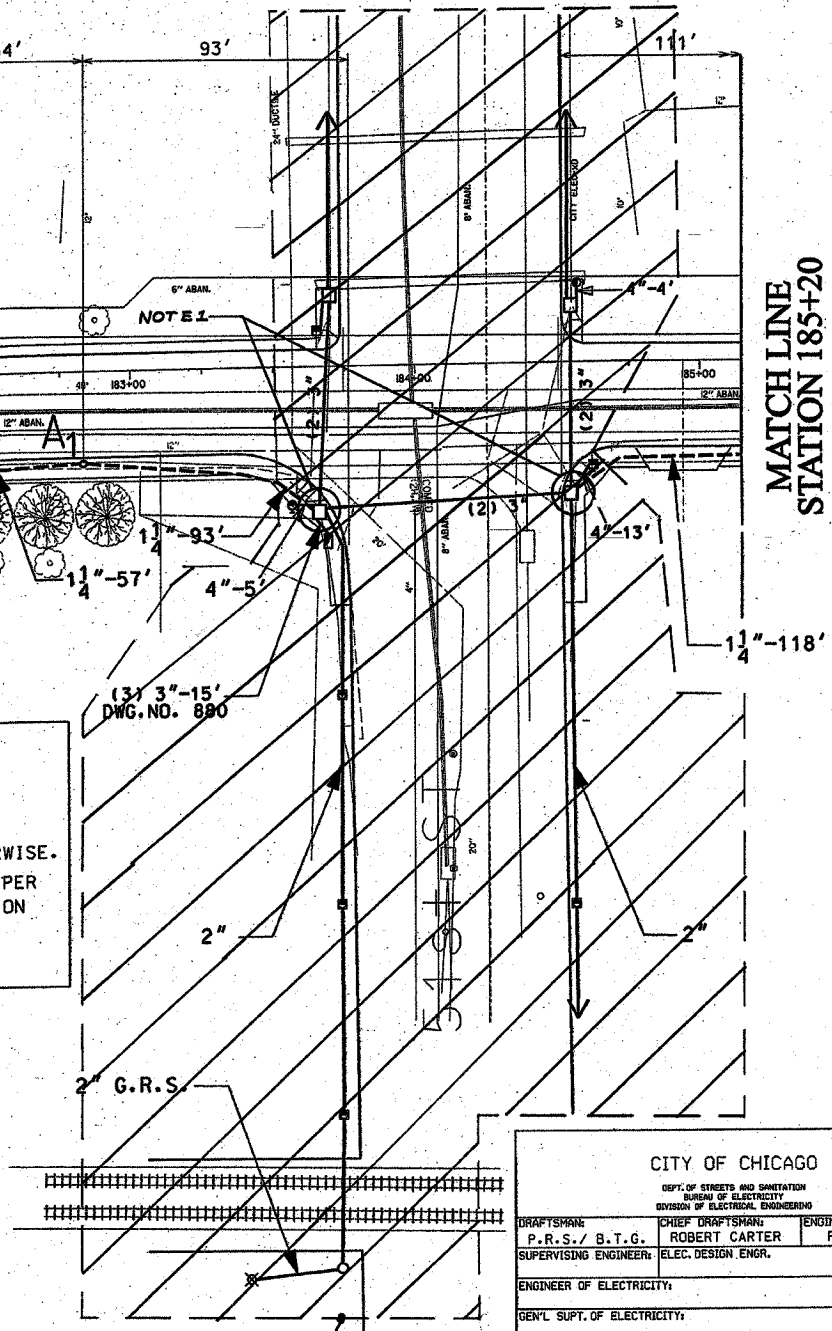
NOTES: CONTRACTOR IS TO INSTALL UNDERGROUND CONDUIT AND PULL ROPE BETWEEN FOUNDATIONS AS WELL AS PERFORM THE FOLLOWING WORK ITEMS ACCORDING TO BUREAU OF ELECTRICITY SPECIFICATIONS:  
"A" - INSTALL 20" x 5' FOUNDATION, 10" B.C., 1" ANCHOR RODS AS PER DRAWING No. 565, FLUSH IN CONCRETE SIDEWALK, 2' OFF FACE OF CURB, UNLESS NOTED OTHERWISE.  
"A1" - INSTALL 20" x 5' OFFSET FOUNDATION, 10" B.C., 1" ANCHOR RODS SIMILAR AS PER DRAWING No. 937, 2' OFF FACE OF CURB, UNLESS NOTED OTHERWISE. BUILD FOUNDATION FLUSH WITH SIDEWALK.  
"B" - INSTALL 30" HANDHOLE AS PER DRAWING NO. 867 WITH 24" FRAME AND COVER.

NOTES:  
1. ROUTE PROPOSED CONDUIT RUN TO EXISTING MAWHOLE AS SHOWN. DRILL EXISTING MAWHOLE AND INSTALL PROPOSED CONDUIT THROUGH MAWHOLE WALL. SEE DRAWING BOE-2 FOR DETAILS.



MATCH LINE  
STATION 185+20

MATCH LINE  
STATION 191+05  
SEE SHEET 04-014



NOT INCLUDED IN THIS CONTRACT

CITY OF CHICAGO  
DEPT. OF STREETS AND SANITATION  
BUREAU OF ELECTRICITY  
DIVISION OF ELECTRICAL ENGINEERING

DRAFTSMAN: P.R.S./ B.T.G.	CHIEF DRAFTSMAN: ROBERT CARTER	ENGINEER: P.R.S./ B.T.G.
SUPERVISING ENGINEER: ELEC. DESIGN ENGR.		DWG. NO. <b>04-013</b>
ENGINEER OF ELECTRICITY:		
GEN'L SUPT. OF ELECTRICITY:		
DEPUTY COMMISSIONER:		
SIZE: 22" x 36"	SCALE: 1"=30'	DATE: 1/20/04
ILLINOIS DEPARTMENT OF TRANSPORTATION F.A.I. 90/94 (DAN RYAN EXPRESSWAY) 59th St. TO 47th St. (FRONTAGE ROADS)		
STREET LIGHTING UNDERGROUND CONDUIT FACILITIES		
SCALE: 1" = 30'		DRAWN BY: B.T.G.
DATE: February 11, 2005		CHECKED BY: O.L.

REVISIONS	
NAME	DATE