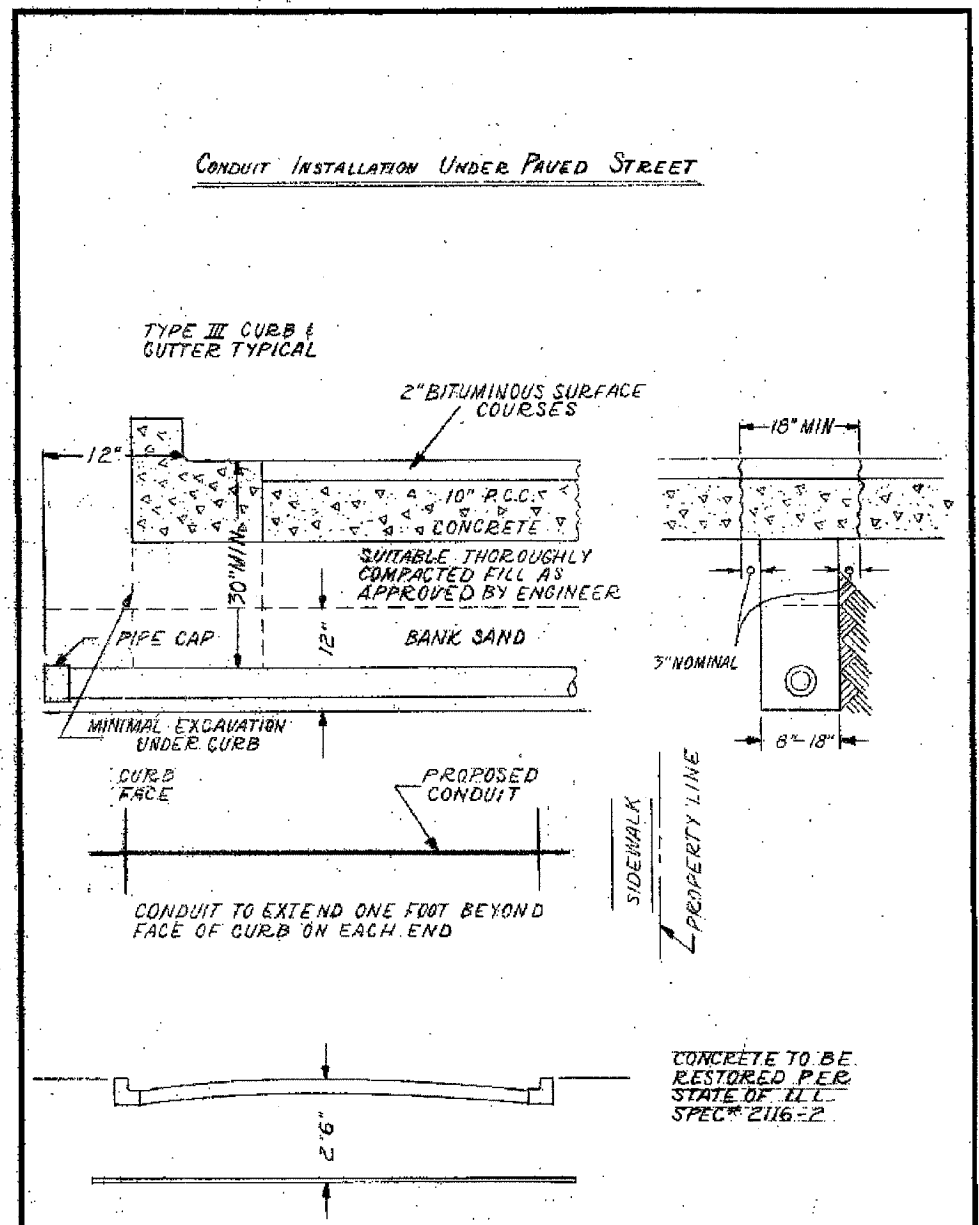
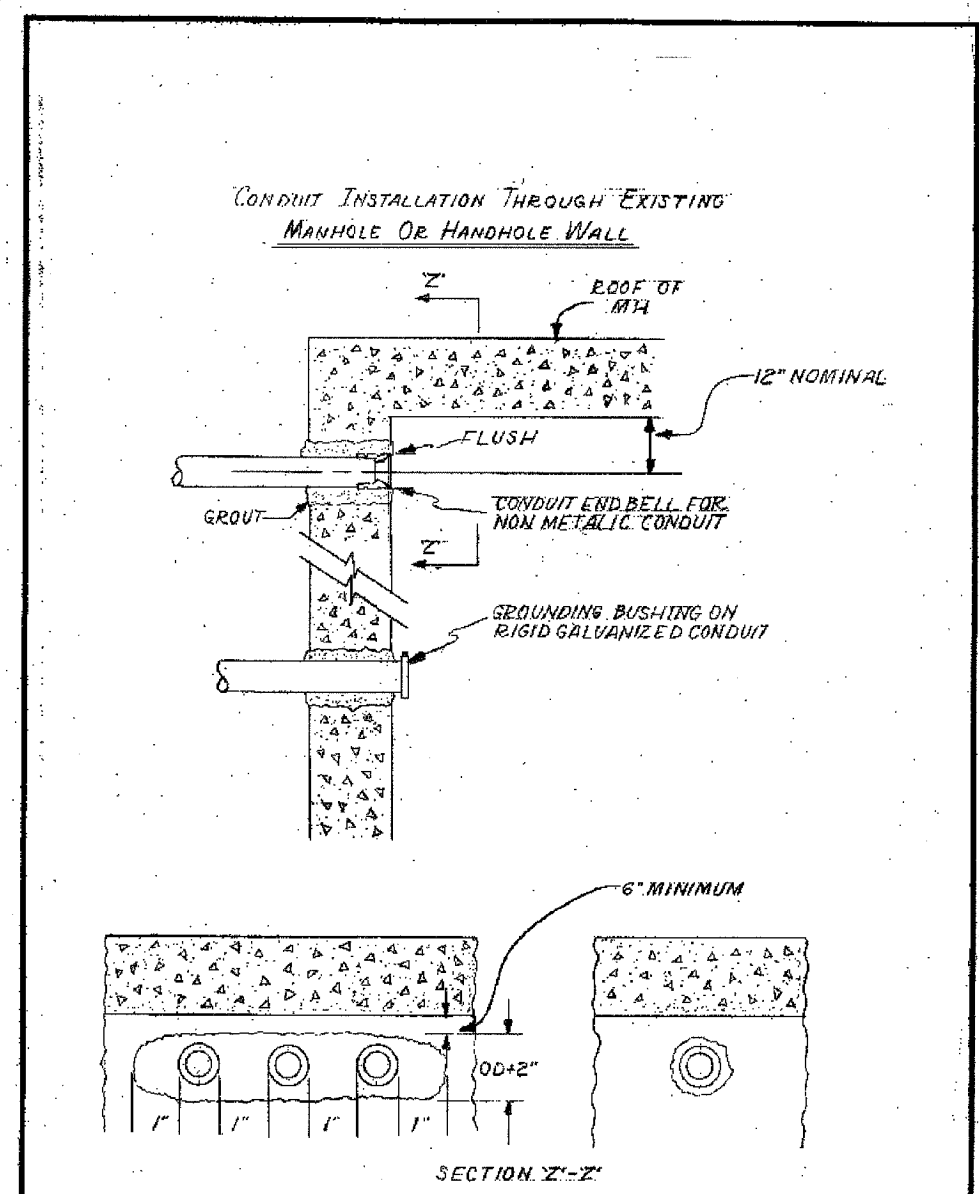


F.A.I. RTE.	SECTION	COUNTY	TOTAL SHEETS	SHEET NO.
90/94	2004-06BL	COOK	37	31
STA.	TO STA.			
FED. ROAD DIST. NO. 1		ILLINOIS	FED. AID PROJECT	
62807				



INSTALLATION METHOD OF INSTALLING CONDUIT UNDER PAVED ROADWAY		
CITY OF CHICAGO DEPT. OF STREETS AND SANITATION BUREAU OF ELECTRICITY DIVISION OF ELECTRICAL ENGINEERING		
DRAWN A.M. JOHNSON	CHECKED R. SYCOWSKI	ENGINEER E.L. MARTIN
<i>Thomas Kilduff</i> ENGINEER OF ELECTRICITY		813
<i>Charles C. Bentley</i> ENGINEER OF ELECTRICITY		
DATE 8-5-14	SCALE AS SHOWN	



OPENING THROUGH WALL TO BE KEPT TO MINIMUM SIZE TO ADMIT CONDUIT AND SUFFICIENT GROUT TO ASSURE SEALING WALL.

INSTALLATION METHOD OF INSTALLING CONDUIT THRU MANHOLE WALL		
CITY OF CHICAGO DEPT. OF STREETS AND SANITATION BUREAU OF ELECTRICITY DIVISION OF ELECTRICAL ENGINEERING		
DRAWN A.M. JOHNSON	CHECKED R. SYCOWSKI	ENGINEER E.L. MARTIN
<i>Thomas Kilduff</i> ENGINEER OF ELECTRICITY		814
<i>Charles C. Bentley</i> ENGINEER OF ELECTRICITY		
DATE 8-5-14	SCALE AS SHOWN	

REVISIONS	
NAME	DATE

V:\projects\90-94\94-06BL\94-06BL-31.dwg 09/12/2005 09:42:38 AM