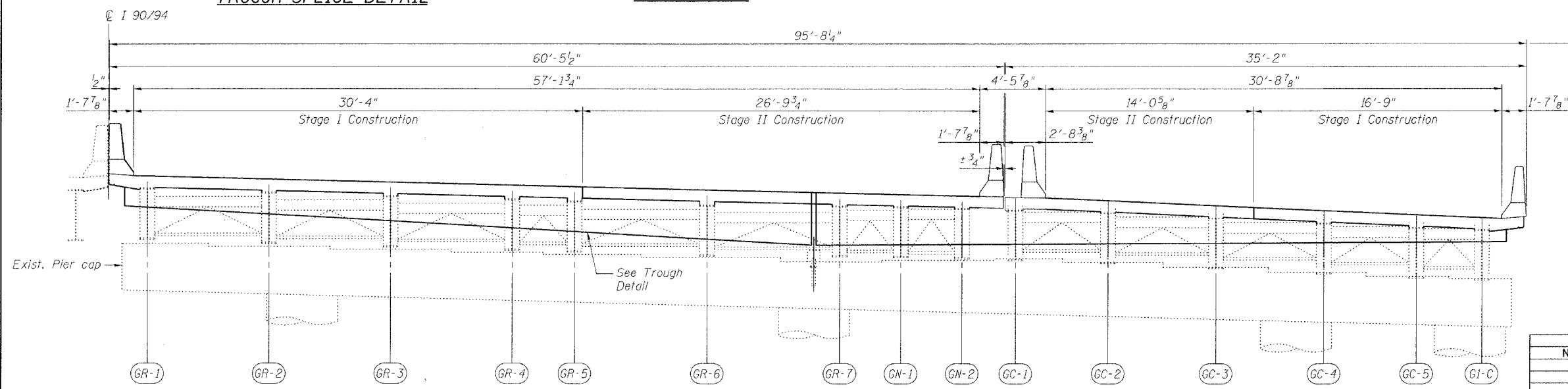
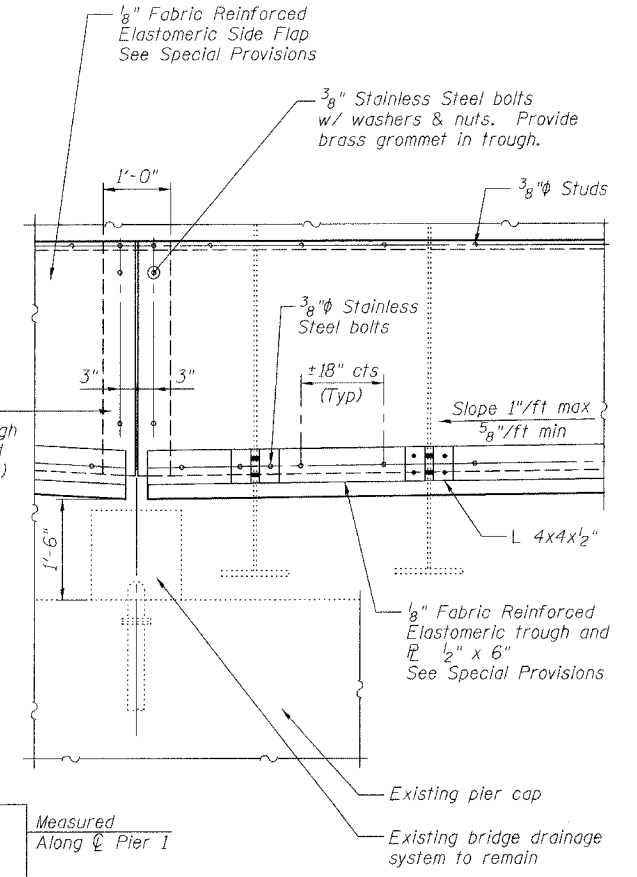
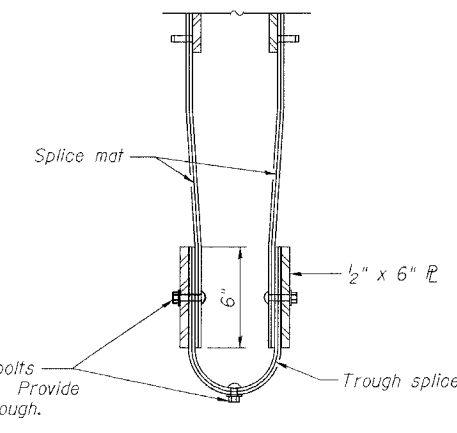
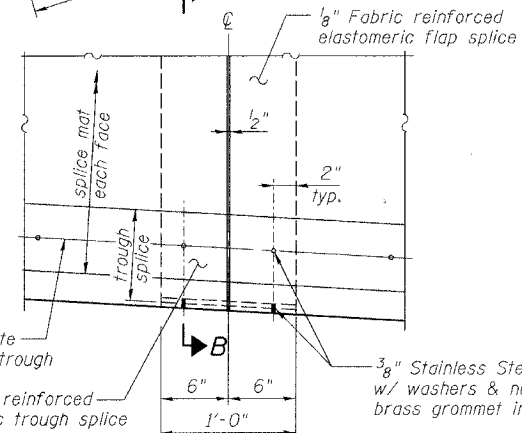
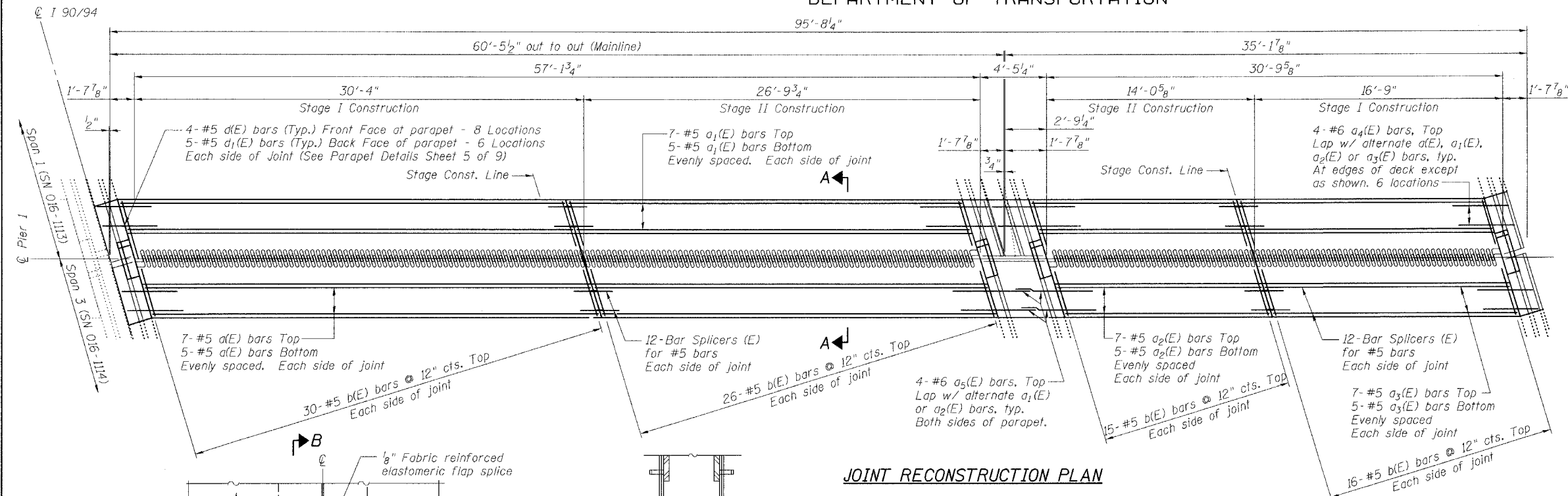


STATE OF ILLINOIS
DEPARTMENT OF TRANSPORTATION

ROUTE NO. FAI 90/94	SECTION *	COUNTY COOK	TOTAL SHEETS 93	SHEET NO. 58	SHEET NO. 3 9 SHEETS
FED. ROAD DIST. NO.		ILLINOIS	FED. AID PROJECT		

* 2005-008F
Contract #62919



ELEVATION (LOOKING NORTH)
(Showing Span 1 Deck Configuration)

- Notes:
- For Parapet Details and Superstructure Bill of Material, see Sheet 5 of 9.
 - For Section A-A, see Sheet 4 of 9.

REVISIONS	
NAME	DATE

ILLINOIS DEPARTMENT OF TRANSPORTATION
PIER 1 JOINT DETAILS
F.A.I. ROUTE 90/94 NORTHBOUND (DAN RYAN EXPRESSWAY)
OVER SOUTH BRANCH - CHICAGO RIVER
COOK COUNTY
S.N. 016-1113 - PIER 1

SCALE: VERT. 1"=4'-0"
HORIZ. 1"=40'-0"
DATE: 3/22/05

DRAWN BY: LANDREY
DESIGNED BY: SANFORD
CHECKED BY: -

GREENE & BRADFORD, INC.
OF SPRINGFIELD

COMPUTER FILE NO.
04286-W01-NB-PJ1
PROJECT 04286-W01
6/21/05-MML

FILE NAME = \$FILES
SCALE = 1/4"=1'-0"
PLOT DATE = 6/21/2005
PLOT TIME = 11:56:12 PM
OPERATOR = michelle