

ROUTE	SECTION	COUNTY	TOTAL SHEETS	SHEET NUMBER
FAP 326	107 CRC-PP-3	KANE	13	1

FOR INDEX OF SHEETS SEE SHEET 2

**STATE OF ILLINOIS
DEPARTMENT OF TRANSPORTATION
DIVISION OF HIGHWAYS
DISTRICT ONE**

CONTRACT NO. 62943

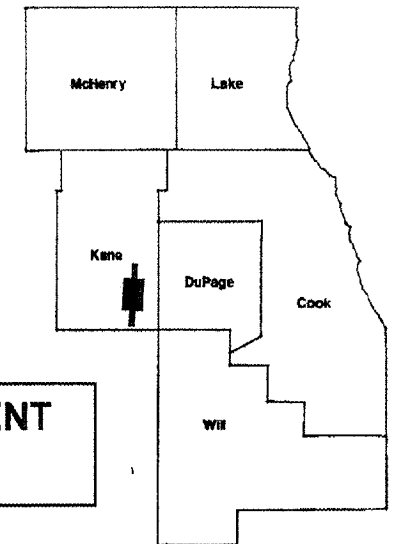
**IMPROVEMENT IS
LOCATED IN THE VILLAGE
OF SUGAR GROVE**

PROPOSED HIGHWAY PLANS

FAP 326: IL 47
GALENA BLVD. TO NORTH OF I-88
SECTION: 107 CRC-PP-3

CONTINUOUS REINFORCED CONCRETE PATCHING
KANE COUNTY
C-91-182-05

D-91-182-05



OMISSIONS: NORTHBOUND
STA. 110+84 TO STA. 154+39
STA. 170+22 TO STA. 171+88

OMISSIONS: SOUTHBOUND
STA. 16+86 TO STA. 18+52
STA. 34+74 TO STA. 78+29

**NORTHBOUND IMPROVEMENT
ENDS STA. 188+20**

LOCATION OF IMPROVEMENT INDICATED THUS:

**NORTHBOUND IMPROVEMENT
BEGINS STA. 0+00**

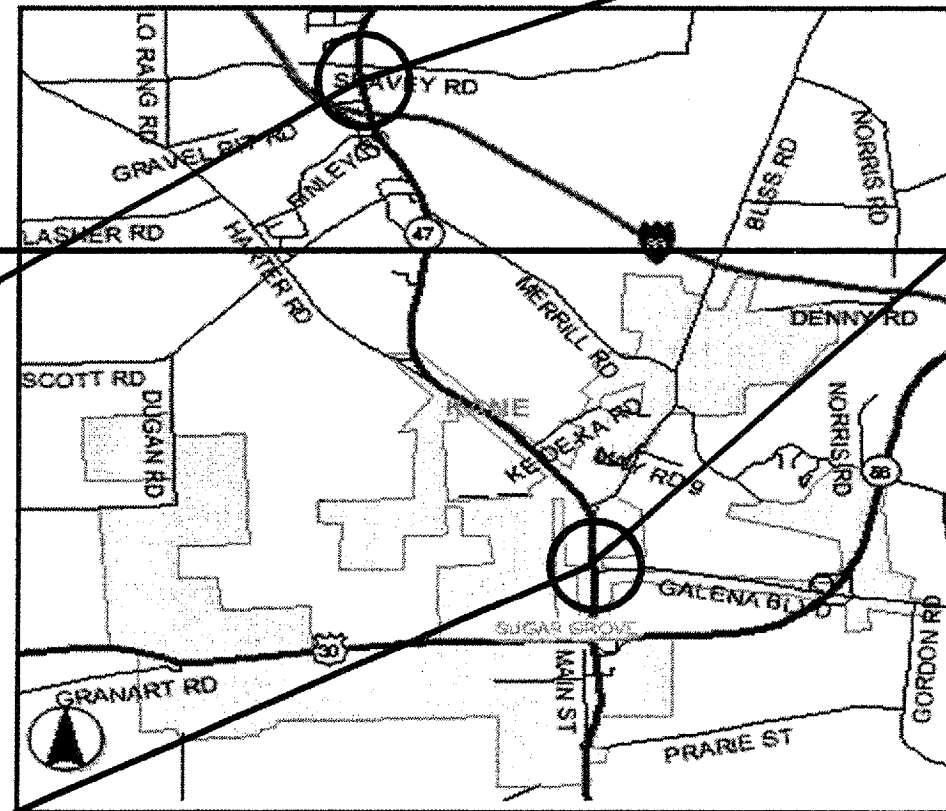
**SOUTHBOUND IMPROVEMENT
BEGINS STA. 0+00**

TRAFFIC DATA:

IL 47:
GALENA BLVD TO BLISS RD
SPEED LIMIT = 45 MPH
2002 ADT = 19,700

BLISS RD. TO SEAVEY RD
SPEED LIMIT = 55 MPH
2002 ADT = 14,000

**SOUTHBOUND IMPROVEMENT
ENDS STA. 207+40**



SUGAR GROVE TOWNSHIP

**GROSS LENGTH OF IMPROVEMENT = 21,255 FEET = 4.03 MILES
NET LENGTH OF IMPROVEMENT = 13,101 FEET = 2.48 MILES**

STATE OF ILLINOIS
DEPARTMENT OF TRANSPORTATION
DIVISION OF HIGHWAYS

SUBMITTED: May 27, 20 05
Dave O'Keefe
DEPUTY DIRECTOR OF HIGHWAYS, REGION ENGINEER

July 1, 20 05
Mike Pine
ENGINEER OF DESIGN AND ENVIRONMENT

July 1, 20 05
Victor Mader
DIRECTOR, DIVISION OF HIGHWAYS

**PRINTED BY THE AUTHORITY
OF THE STATE OF ILLINOIS**

J.U.L.I.E.: JOINT UTILITY LOCATION
INFORMATION FOR EXCAVATION
(800) 892-0123

DISTRICT ONE - DESIGN - PLAN PREPARATION ENGINEER:
KEN ENG / ROBERT BORO (847) 705-4178

CONTRACT NO. 62943

ROUTE	SECTION	COUNTY	TOTAL SHEETS	SHEET NUMBER
FAP 326	107 CRC-PP-3	KANE	13	2

CONTRACT NO. 62943

INDEX OF SHEETS

STATE STANDARDS

<u>SHEET NO.</u>	<u>DESCRIPTION</u>	<u>STANDARDS</u>	<u>DESCRIPTION</u>
1	TITLE SHEET	420001-06	PAVEMENT JOINTS
2	INDEX OF SHEETS STATE STANDARDS	421101-05	7.2 m (24') FOR CRC PAVEMENT
3	GENERAL NOTES	421001-01	BAR REINFORCEMENT FOR CRC PAVEMENT
4	SUMMARY OF QUANTITIES	442001-02	CLASS A PATCHES
5-6	TYPICAL CROSS SECTION	701301-02	LANE CLOSURE 2L, 2W SHORT TIME OPERATIONS
7-11	PATCHING SCHEDULE	701421-01	LANE CLOSURE, MULTILANE, DAY OPERATIONS ONLY, FOR SPEEDS \geq 45 MPH TO 55 MPH
12	DISTRICT ONE TYPICAL PAVEMENT MARKINGS	702001-05	TRAFFIC CONTROL DEVICES
13	TRAFFIC CONTROL AND PROTECTION FOR SIDE ROADS, INTERSECTIONS AND DRIVEWAYS	780001-01	TYPICAL PAVEMENT MARKINGS

ILLINOIS DEPARTMENT OF TRANSPORTATION

**INDEX OF SHEETS
STATE STANDARDS**

ROUTE	SECTION	COUNTY	TOTAL SHEETS	SHEET NUMBER
FAP 326	107 CRC-PP-3	KANE	13	3

CONTRACT NO. 62943

GENERAL NOTES

BEFORE STARTING ANY EXCAVATION, THE CONTRACTOR SHALL CALL J.U.L.I.E. AT 800-892-0123 FOR FIELD LOCATIONS OF BURIED ELECTRIC, TELEPHONE AND GAS UTILITIES (48 HOURS NOTIFICATION IS REQUIRED).

THE CONTRACTOR WILL NOT BE ALLOWED TO SET UP A YARD OR FIELD OFFICE ON STATE PROPERTY WITHOUT WRITTEN PERMISSION FROM THE DEPARTMENT.

IT SHALL BE THE CONTRACTOR'S RESPONSIBILITY TO VERIFY ALL DIMENSIONS AND CONDITIONS EXISTING IN THE FIELD PRIOR TO CONSTRUCTION AND ORDERING OF MATERIALS.

THE CONTRACTOR SHALL CONTACT THE DISTRICT ONE TRAFFIC CONTROL SUPERVISOR AT (847) 705-4470 A MINIMUM OF 72 HOURS IN ADVANCE OF BEGINNING WORK.

THE CONTRACTOR SHALL BE REQUIRED TO PROVIDE ACCESS TO ABUTTING PROPERTY AT ALL TIMES DURING THE CONSTRUCTION OF THIS PROJECT.

DO NOT SCALE PLANS FOR CONSTRUCTION DIMENSIONS.

THE CONTRACTOR SHALL COORDINATE CONSTRUCTION ACTIVITIES WITH UTILITY COMPANIES.

WHEN ARTIFICIAL LIGHTING IS USED IN NIGHT OPERATIONS, THE CONTRACTOR SHALL EXERCISE THE UPMOST PRECAUTIONS IN PREVENTING ADVERSE VISIBILITY TO THE MOTORING PUBLIC AND ADJOINING RESIDENTIAL AREAS.

ANY PAVEMENT MARKINGS OBLITERATED BY THE WORK SHALL BE REPLACED AND PAID FOR IN KIND. BEFORE BEGINNING WORK, THE CONTRACTOR SHALL RETAIN AND RECORD (FOR FUTURE REFERENCE), ALL EXISTING PAVEMENT MARKING LINES AND RAISED REFLECTIVE PAVEMENT MARKERS IN ORDER THAT THESE LOCATIONS CAN BE RE-ESTABLISHED FOR STRIPING. EXACT LOCATIONS OF ALL STRIPING SHALL BE AS DIRECTED BY THE ENGINEER.

THESE PLANS HAVE BEEN PREPARED FROM NOTES RECEIVED FROM FIELD MAINTENANCE ENGINEERS.

THE ENGINEER SHALL OBTAIN APPROVAL FROM THE DISTRICT ONE BUREAU CHIEF OF MAINTENANCE FOR ANY PROPOSED REVISIONS IN THE SCHEDULED PAVEMENT PATCHING LOCATIONS.

THE ENGINEER SHALL CONTACT DEBBIE HANLON, TRAFFIC FIELD ENGINEER, AT (847) 438-2300 TWO (2) WEEKS PRIOR TO THE START OF THIS PROJECT SO THAT THE EXACT STATIONING OF NO PASSING ZONES AND OTHER PERMANENT PAVEMENT MARKINGS MAY BE ESTABLISHED.

ILLINOIS DEPARTMENT OF TRANSPORTATION

GENERAL NOTES

	ROUTE	SECTION	COUNTY	TOTAL SHEETS	SHEET NUMBER
	FAP 326	107 CRC-PP-3	KANE	13	4

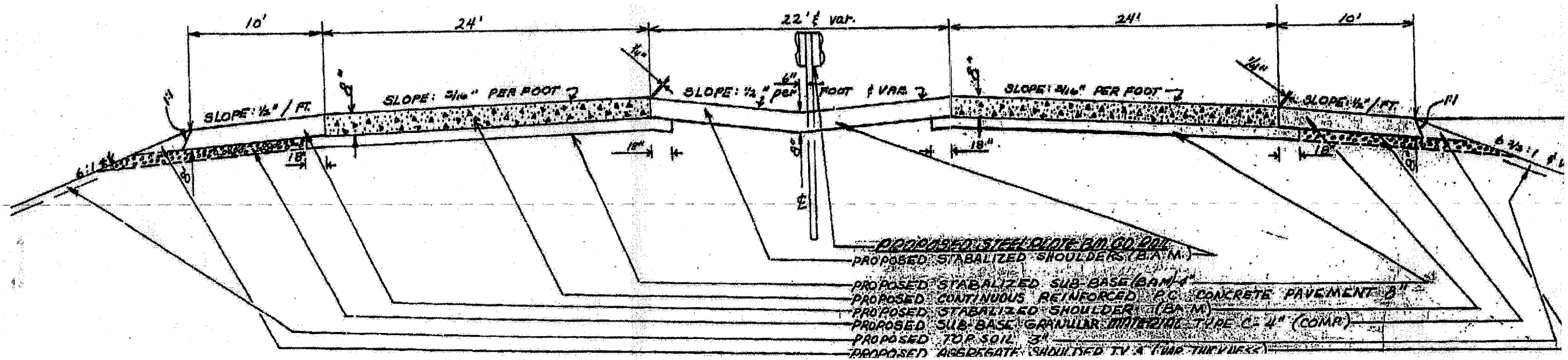
SUMMARY OF QUANTITIES			TOTAL QUANTITIES	CONSTRUCTION TYPE CODE						
CODE NO	ITEM	UNIT		URBAN J000	KANE COUNTY					
					IL 47-NB/SB					
44200525	CLASS A PATCHES, TYPE I, 8 INCH	SQ YD	44.7	44.7						
44200529	CLASS A PATCHES, TYPE II, 8 INCH	SQ YD	1726.7	1726.7						
44200533	CLASS A PATCHES, TYPE III, 8 INCH	SQ YD	1808	1808						
44200535	CLASS A PATCHES, TYPE IV, 8 INCH	SQ YD	1557.3	1557.3						
44213000	PATCHING REINFORCEMENT	SQ YD	5124.7	5124.7						
44213200	SAW CUTS	FOOT	17057	17057						
67000400	ENGINEER'S FIELD OFFICE, TYPE A	CAL MO	4	4						
67100100	MOBILIZATION	L SUM	1	1						
70100310	TRAFFIC CONTROL & PROTECTION, STANDARD 701421	L SUM	1	1						
* 78008210	POLYUREA PAVEMENT MARKING TYPE I - LINE 4"	FOOT	6600	6600						
* 78100100	RAISED REFLECTIVE PAVEMENT MARKER	EACH	200	200						
X0322467	TEMPORARY INFORMATION SIGNING FOR LANE CLOSURE	SQ FT	96	96						
Z0032470	JOINT SEALER	FOOT	7250	7250						
Z0075300	TIE BARS	EACH	2344	2344						

*SPECIALTY ITEMS

ILLINOIS DEPARTMENT OF
TRANSPORTATION
SUMMARY OF QUANTITIES

ROUTE	SECTION	COUNTY	TOTAL SHEETS	SHEET NUMBER
FAP 326	107 CRC-PP-3	KANE	13	5

CONTRACT 62943



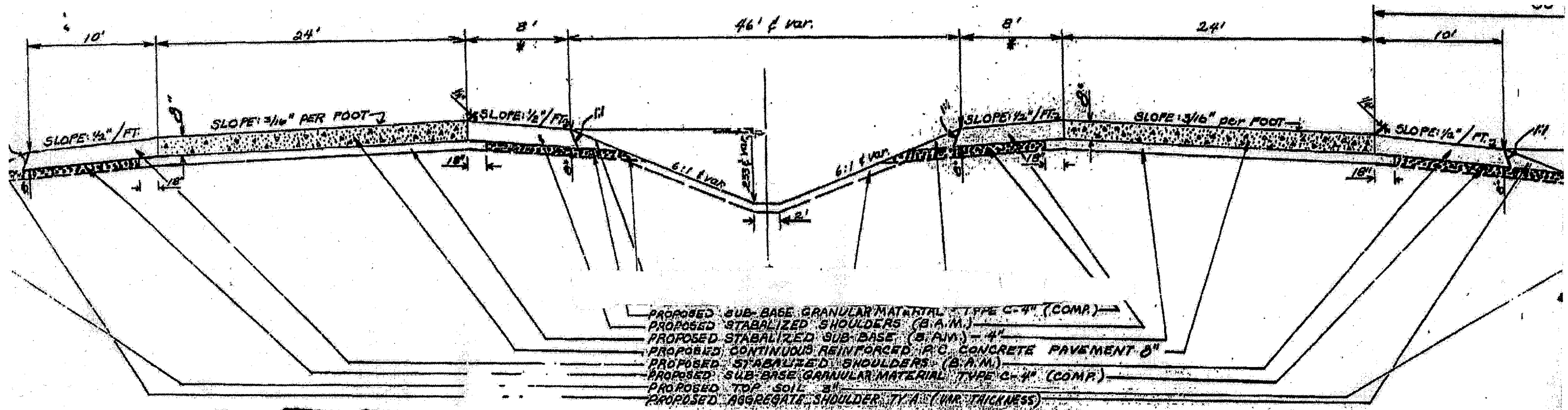
**IL ROUTE 47:
 FROM GALENA BLVD. TO BLISS RD.**

FOR INFORMATION ONLY

ILLINOIS DEPARTMENT OF TRANSPORTATION
TYPICAL SECTION

ROUTE	SECTION	COUNTY	TOTAL SHEETS	SHEET NUMBER
FAP 326	107 CRC-PP-3	KANE	13	6

CONTRACT 62943



IL ROUTE 47:
FROM BLISS RD. TO NORTH OF I-88

FOR INFORMATION ONLY

ILLINOIS DEPARTMENT OF TRANSPORTATION

TYPICAL SECTION

ROUTE	SECTION	COUNTY	TOTAL SHEETS	SHEET NUMBER
FAP 326	107 CRC-PP-3	KANE	13	7

PAVEMENT PATCHING SCHEDULE

Northbound ILLINOIS ROUTE 47
BLISS RD. TO NORTH OF I-88 BRIDGE (SEAVEY RD.)

PATCH LOCATION NUMBER	STATION	LANE 1			LANE 2		
		SIZE (L X W)	AREA (SQ. YD.)	TYPE	SIZE (L X W)	AREA (SQ. YD.)	TYPE
	0+00						
	11+67						
							CENTERLINE-BLISS RD.
							START OF CRC PAVEMENT
1	12+79				5 x 12	6.7	II
2	13+79	5 x 12	6.7	II			
3	14+14				20 x 6	13.3	II
4	14+83				15 x 6	10.0	II
5	16+51				15 x 6	10.0	II
6	17+96				29 x 6	19.3	III
7	21+34	15 x 12	20.0	III			
8	22+64				25 x 6	16.7	III
9	24+44				15 x 12	20.0	III
10	24+67				30 x 6	20.0	III
11	25+37				18 x 6	12.0	II
12	26+03				38 x 6	25.3	IV
	28+21						CENTERLINE-KEDEKA RD.
13	29+16				10 x 6	6.7	II
14	29+60				34 x 6	22.7	III
15	30+27				22 x 6	14.7	II
16	31+34				56 x 6	37.3	IV
17	32+07				18 x 6	12.0	II
18	32+83				50 x 6	33.3	IV
19	34+00				34 x 6	22.7	III
20	36+27				12 x 12	16.0	III
21	44+72				12 x 12	16.0	III
22	47+53				20 x 12	26.7	IV
23	49+17				11 x 6	7.3	II
24	49+48				8 x 6	5.3	II
25	52+37				10 x 6	6.7	II
26	54+92				25 x 6	16.7	III
27	55+42				10 x 6	6.7	II
28	55+57				10 x 6	6.7	II
29	56+23				22 x 12	29.3	IV
30	57+22				15 x 12	20.0	III
	57+54						CENTERLINE-S. ENTRANCE WAUBONSEE DR.
31	57+87				12 x 6	8.0	II
32	58+15				8 x 6	5.3	II
33	58+57				42 x 6	28.0	IV

PAVEMENT PATCHING SCHEDULE

CONTRACT 62943

Northbound ILLINOIS ROUTE 47
BLISS RD. TO NORTH OF I-88 BRIDGE (SEAVEY RD.)

PATCH LOCATION NUMBER	STATION	LANE 1			LANE 2		
		SIZE (L X W)	AREA (SQ. YD.)	TYPE	SIZE (L X W)	AREA (SQ. YD.)	TYPE
34	59+08	13 x 12	17.3	III	13 x 12	17.3	III
35	59+29	16 x 12	21.3	III			
36	59+50				21 x 12	28.0	IV
37	59+59	10 x 6	6.7	II			
38	60+00				18 x 12	24.0	III
39	60+24				18 x 6	12.0	II
40	60+71				12 x 6	8.0	II
41	61+93				50 x 6	33.3	IV
42	62+81				8 x 6	5.3	II
43	63+57				9 x 6	6.0	II
44	64+74				20 x 6	13.3	II
45	65+42				14 x 12	18.7	III
46	66+00	10 x 12	13.3	II			
47	66+55				34 x 6	22.7	III
48	67+30	12 x 12	16.0	III			
49	67+47	29 x 12	38.7	IV			
50	68+16				8 x 6	5.3	II
51	68+60	11 x 12	14.7	II	11 x 12	14.7	II
52	68+76				7 x 6	4.7	I
53	68+83	12 x 12	16.0	III			
54	69+13	27 x 12	36.0	IV			
55	70+15	19 x 12	25.3	IV			
56	70+39				21 x 6	14.0	II
57	70+42	43 x 12	57.3	IV			
58	70+76				21 x 6	14.0	II
59	71+84	19 x 12	25.3	IV			
60	72+90				21 x 6	14.0	II
61	73+67	11 x 12	14.7	II	11 x 12	14.7	II
62	74+10	39 x 12	52.0	IV			
63	74+40				5 x 12	6.7	II
	76+15						CENTERLINE-HARTER RD.
64	77+28	16 x 12	21.3	III			
65	79+38	11 x 6	7.3	II			
66	80+69	18 x 12	24.0	III			
67	82+45	12 x 12	16.0	III			
68	82+72	12 x 12	16.0	III			
69	82+77				12 x 12	16.0	III

ILLINOIS DEPARTMENT OF TRANSPORTATION

PAVEMENT PATCHING SCHEDULE

ROUTE	SECTION	COUNTY	TOTAL SHEETS	SHEET NUMBER
FAP 326	107 CRC-PP-3	KANE	13	8

PAVEMENT PATCHING SCHEDULE

Northbound ILLINOIS ROUTE 47
BLISS RD. TO NORTH OF I-88 BRIDGE (SEAVEY RD.)

PATCH LOCATION NUMBER	STATION	LANE 1			LANE 2			
		SIZE (L X W)	AREA (SQ. YD.)	TYPE	SIZE (L X W)	AREA (SQ. YD.)	TYPE	
70	84+74	13 x 12	17.3	III				
71	85+46	8 x 6	5.3	II				
72	85+66	14 x 6	9.3	II				
73	86+45	20 x 12	26.7	IV				
74	91+00	7 x 6	4.7	I				
75	91+75				16 x 12	21.3	III	
76	92+16				8 x 6	5.3	II	
77	93+13	10 x 6	6.7	II				
78	98+83	20 x 12	26.7	IV				
79	101+97	15 x 12	20.0	III				
80	104+72				6 x 12	8.0	II	
	110+84	ENDING STATION OF CRC PAVEMENT						
81	154+39	8 x 12	10.7	II				
82	156+49	9 x 6	6.0	II				
83	156+63	14 x 12	18.7	III				
84	156+89	6 x 12	8.0	II				
85	158+49	10 x 6	6.7	II				
86	159+27	6 x 12	8.0	II				
87	160+16	13 x 12	17.3	III				
88	160+45	20 x 6	13.3	II				
89	160+71	13 x 12	17.3	III				
90	161+20	7 x 12	9.3	II				
91	161+33	14 x 12	18.7	III				
92	161+53	21 x 6	14.0	II				
93	161+74	10 x 12	13.3	II				
94	161+96	14 x 6	9.3	II				
95	162+16	12 x 6	8.0	II				
96	162+35	11 x 6	7.3	II				
97	162+52	12 x 6	8.0	II	12 x 12	16.0	III	
98	162+92				5 x 12	6.7	II	
99	163+18				5 x 12	6.7	II	
100	163+28				27 x 12	36.0	IV	
101	164+11				6 x 12	8.0	II	
102	164+23				11 x 12	14.7	II	
103	164+40				14 x 12	18.7	III	
104	164+60				51 x 12	68.0	IV	
105	165+17				17 x 12	22.7	III	

PAVEMENT PATCHING SCHEDULE

Northbound ILLINOIS ROUTE 47
BLISS RD. TO NORTH OF I-88 BRIDGE (SEAVEY RD.)

CONTRACT 62943

PATCH LOCATION NUMBER	STATION	LANE 1			LANE 2			
		SIZE (L X W)	AREA (SQ. YD.)	TYPE	SIZE (L X W)	AREA (SQ. YD.)	TYPE	
106	165+66				6 x 12	8.0	II	
107	165+85				11 x 12	14.7	II	
108	166+15				12 x 6	8.0	II	
109	166+38				15 x 12	20.0	III	
110	166+64	15 x 6	10.0	II	15 x 12	20.0	III	
111	166+85	9 x 6	6.0	II	9 x 12	12.0	II	
112	167+00	11 x 6	7.3	II	11 x 12	14.7	II	
113	167+15	17 x 6	11.3	II	17 x 12	22.7	III	
114	167+49	8 x 12	10.7	II	8 x 12	10.7	II	
115	168+19	15 x 6	10.0	II	15 x 6	10.0	II	
116	168+85				8 x 12	10.7	II	
	170+22	SOUTH BRIDGE JOINT						
	171+88	NORTH BRIDGE JOINT						
117	173+27				6 x 12	8.0	II	
118	174+13				15 x 12	20.0	III	
119	174+35				17 x 12	22.7	III	
120	174+58				11 x 12	14.7	II	
121	174+76				5 x 12	6.7	II	
122	175+39	12 x 6	8.0	II				
123	175+45				8 x 12	10.7	II	
124	175+59				5 x 12	6.7	II	
125	175+83				6 x 12	8.0	II	
126	175+95	16 x 6	10.7	II	20 x 6	13.3	II	
127	176+22	14 x 6	9.3	II	14 x 6	9.3	II	
128	176+42	11 x 6	7.3	II	11 x 12	14.7	II	
129	176+60				17 x 12	22.7	III	
130	176+82	18 x 6	12.0	II	18 x 12	24.0	III	
131	177+06	67 x 6	44.7	IV	61 x 12	81.3	IV	
132	177+79				10 x 12	13.3	II	
133	177+94	14 x 6	9.3	II				
134	178+15	15 x 12	20.0	III				
135	178+18				12 x 12	16.0	III	
136	178+35	14 x 6	9.3	II	14 x 12	18.7	III	
137	178+56	6 x 12	8.0	II	6 x 12	8.0	II	
138	178+69	12 x 12	16.0	III	12 x 12	16.0	III	
139	178+88	30 x 6	20.0	III				
140	178+89				30 x 12	40.0	IV	

ILLINOIS DEPARTMENT OF TRANSPORTATION

PAVEMENT PATCHING SCHEDULE

ROUTE	SECTION	COUNTY	TOTAL SHEETS	SHEET NUMBER
FAP 326	107 CRC-PP-3	KANE	13	10

PAVEMENT PATCHING SCHEDULE

Southbound ILLINOIS ROUTE 47
NORTH OF I-88 BRIDGE (SEAVEY RD.) TO NORTH OF GALENA BLVD.

PATCH LOCATION NUMBER	STATION	LANE 1			LANE 2		
		SIZE (L X W)	AREA (SQ. YD.)	TYPE	SIZE (L X W)	AREA (SQ. YD.)	TYPE
203	20+10	14 x 6	9.3	II	14 x 6	9.3	II
204	24+43	132 x 6	88.0	IV			
	26+22	CENTERLINE-FINLEY RD.					
205	26+36	25 x 6	16.7	III			
206	26+59	11 x 6	7.3	II			
207	28+87	30 x 6	20.0	III			
208	29+71	6 x 12	8.0	II			
209	34+66	8 x 12	10.7	II			
	34+74	ENDING STATION OF CRC PAVEMENT					
	78+29	START OF CRC PAVEMENT					
210	80+13	13 x 12	17.3	III			
211	81+44				15 x 6	10.0	II
212	82+06				12 x 12	16.0	III
213	83+90				10 x 6	6.7	II
214	87+95	22 x 12	29.3	IV			
215	88+49	8 x 6	5.3	II			
216	89+50	12 x 12	16.0	III			
217	98+15				12 x 12	16.0	III
218	102+09				12 x 12	16.0	III
219	107+96	47 x 6	31.3	IV			
220	108+01				8 x 6	5.3	II
221	108+60	23 x 6	15.3	III	23 x 6	15.3	III
222	108+93				12 x 6	8.0	II
223	109+08				30 x 12	40.0	IV
224	111+04				50 x 12	66.7	IV
225	111+70	22 x 12	29.3	IV	17 x 12	22.7	III
226	112+19	20 x 6	13.3	II			
227	112+96				40 x 6	26.7	IV
	113+29	CENTERLINE-HARTER RD.					
228	115+64	25 x 6	16.7	III			
229	116+54				18 x 12	24.0	III
230	117+68				11 x 12	14.7	II
231	118+80				6 x 12	8.0	II
232	119+49				33 x 12	44.0	IV
233	119+86	19 x 6	12.7	II			
234	120+13				7 x 6	4.7	I
235	121+18				8 x 6	5.3	II

PAVEMENT PATCHING SCHEDULE

Southbound ILLINOIS ROUTE 47
NORTH OF I-88 BRIDGE (SEAVEY RD.) TO NORTH OF GALENA BLVD.

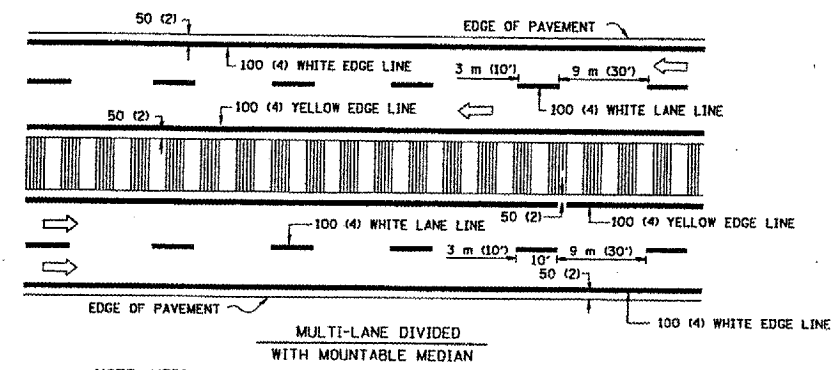
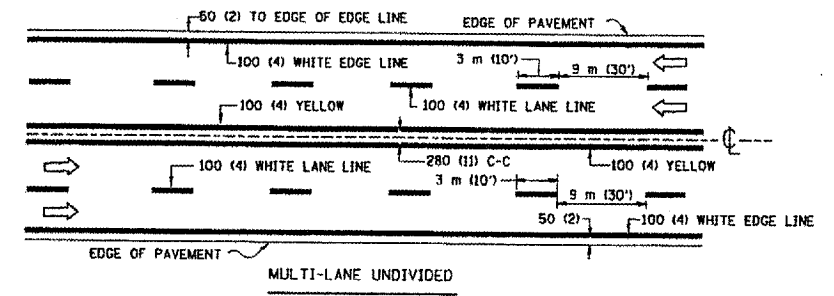
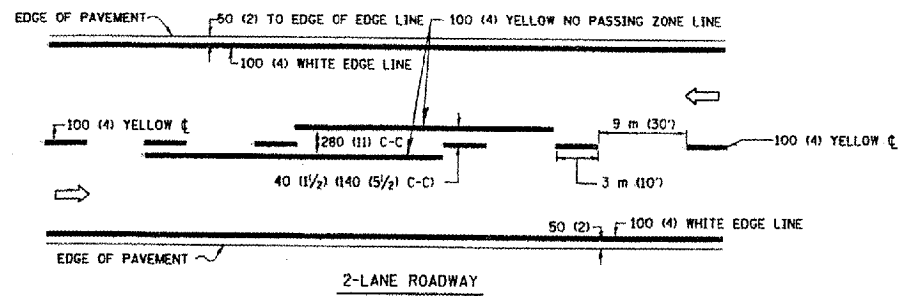
CONTRACT 62943

PATCH LOCATION NUMBER	STATION	LANE 1			LANE 2		
		SIZE (L X W)	AREA (SQ. YD.)	TYPE	SIZE (L X W)	AREA (SQ. YD.)	TYPE
236	122+13	31 x 6	20.7	III			
237	122+36	11 x 6	7.3	II			
238	124+92				9 x 6	6.0	II
239	125+69	20 x 6	13.3	II			
240	128+33				10 x 6	6.7	II
241	128+55				14 x 12	18.7	III
242	130+37				11 x 6	7.3	II
243	131+54	7 x 6	4.7	I			
	132+65	CENTERLINE-WAUBONSEE RD.					
244	132+67				16 x 12	21.3	III
245	134+38				12 x 6	8.0	II
246	137+25				13 x 12	17.3	III
247	137+81	15 x 6	10.0	II	15 x 6	10.0	II
248	138+94	34 x 6	22.7	III	34 x 6	22.7	III
249	139+40				10 x 6	6.7	II
250	140+12				17 x 6	11.3	II
251	142+67	15 x 12	20.0	III			
252	143+13	42 x 12	56.0	IV			
253	143+61				15 x 6	10.0	II
254	144+06	29 x 12	38.7	IV			
255	144+12				12 x 6	8.0	II
256	145+63				13 x 6	8.7	II
257	148+86				8 x 6	5.3	II
258	152+56	15 x 12	20.0	III			
259	154+06	10 x 12	13.3	II	10 x 12	13.3	II
260	154+69				10 x 12	13.3	II
261	156+17				7 x 6	4.7	I
	161+59	CENTERLINE-KEDEKA RD.					
262	164+91				16 x 12	21.3	III
263	171+05				11 x 12	14.7	II
264	171+21				35 x 6	23.3	III
265	172+41				10 x 6	6.7	II
266	176+86	19 x 12	25.3	IV			
267	177+52	14 x 12	18.7	III			
268	182+88				15 x 6	10.0	II
269	183+79				12 x 6	8.0	II
270	184+48				15 x 6	10.0	II

ILLINOIS DEPARTMENT OF TRANSPORTATION

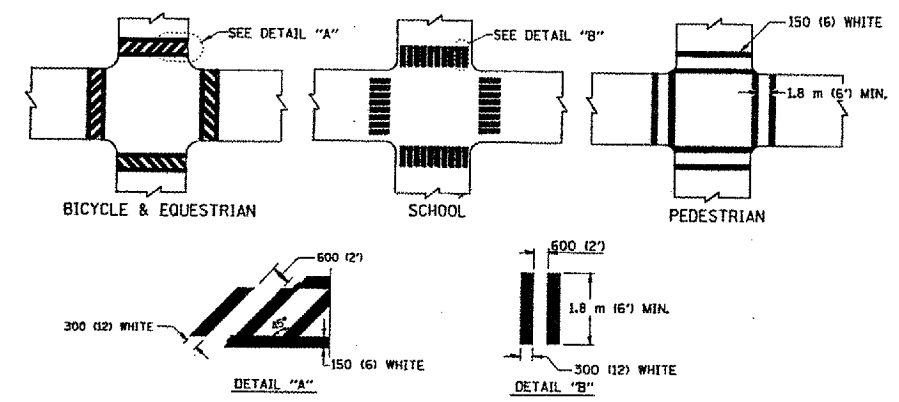
PAVEMENT PATCHING SCHEDULE

CONTRACT 62943

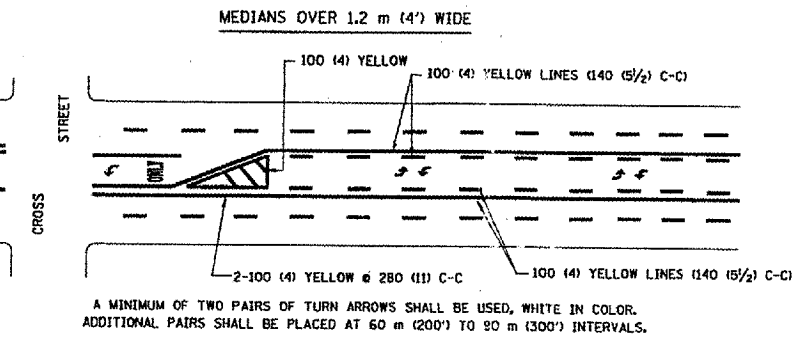
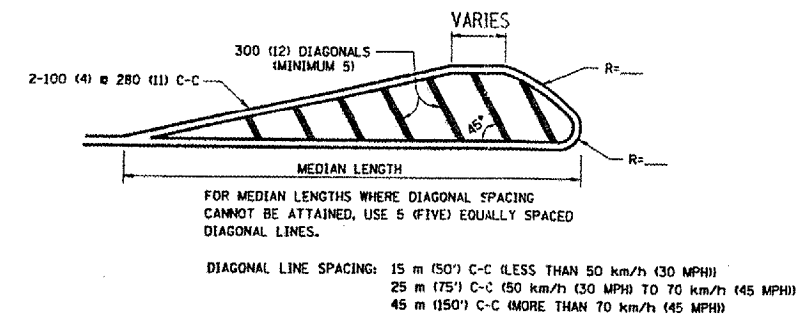
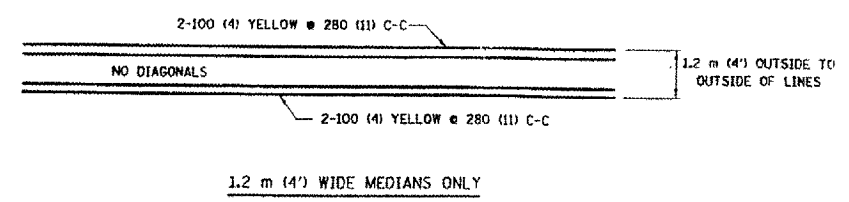


NOTE: MEDIANS WITH BARRIER CURB DO NOT REQUIRE AN EDGE LINE

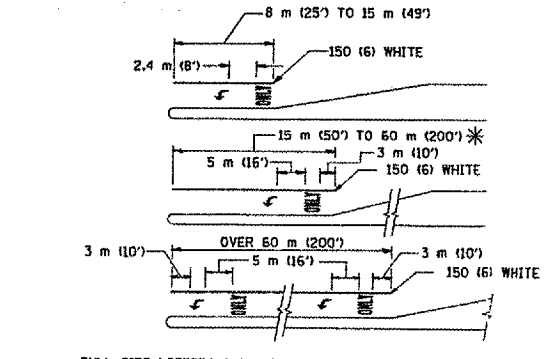
TYPICAL LANE AND EDGE LINE MARKING



TYPICAL CROSSWALK MARKING



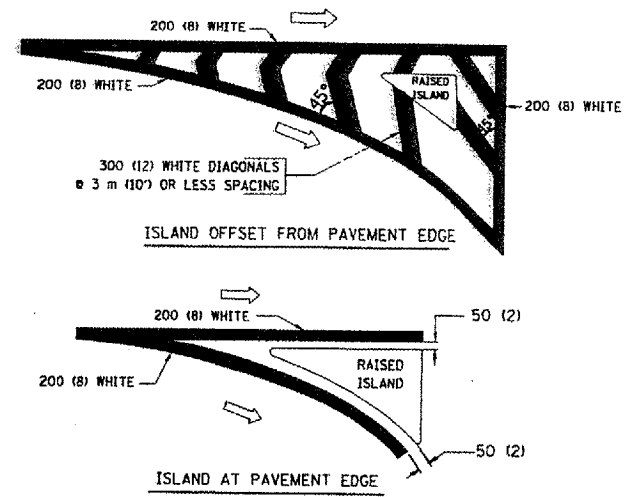
TYPICAL PAINTED MEDIAN MARKING



TYPICAL LEFT (OR RIGHT) TURN LANE

FULL SIZE LETTERS 2.4 m (8') AND ARROWS SHALL BE USED.
 * TURN LANES IN EXCESS OF 120 m (400') IN LENGTH MAY HAVE AN ADDITIONAL SET OF ARROW - "ONLY" INSTALLED MIDWAY BETWEEN THE OTHER TWO SETS OF ARROW - "ONLY".

TYPICAL TURN LANE MARKING



TYPICAL ISLAND MARKING

TYPE OF MARKING	WIDTH OF LINE	PATTERN	COLOR	SPACING / REMARKS
CENTERLINE ON 2 LANE PAVEMENT	100 (4)	SKIP-DASH	YELLOW	3 m (10') LINE WITH 9 m (30') SPACE
CENTERLINE ON MULTI-LANE UNDIVIDED PAVEMENT	2 @ 100 (4)	SOLID	YELLOW	280 (11) C-C
NO PASSING ZONE LINES FOR ONE DIRECTION FOR BOTH DIRECTIONS	100 (4) 2 @ 100 (4)	SOLID SOLID	YELLOW YELLOW	140 (5 1/2) C-C FROM SKIP-DASH CENTERLINE 280 (11) C-C DMIT SKIP-DASH CENTERLINE BETWEEN
LANE LINES	100 (4) 125 (5) ON FREEWAYS	SKIP-DASH SKIP-DASH	WHITE WHITE	3 m (10') LINE WITH 9 m (30') SPACE
DOTTED LINES (EXTENSIONS OF CENTER, LANE OR TURN LANE MARKINGS)	SAME AS LINE BEING EXTENDED	SKIP-DASH	SAME AS LINE BEING EXTENDED	600 (2') LINE WITH 1.8 m (6') SPACE
EDGE LINES	100 (4)	SOLID	YELLOW-LEFT WHITE-RIGHT	OUTLINE MOUNTABLE MEDIANS IN YELLOW; EDGE LINES ARE NOT USED NEXT TO BARRIER CURB
TURN LANE MARKINGS	150 (6) LINE, FULL SIZE LETTERS & SYMBOLS (2.4 m (8'))	SOLID	WHITE	SEE TYPICAL TURN LANE MARKING DETAIL
TWO WAY LEFT TURN MARKING	2 @ 100 (4) EACH DIRECTION 2.4 m (8') LEFT ARROW	SKIP-DASH AND SOLID IN PAIRS	YELLOW WHITE	3 m (10') LINE WITH 9 m (30') SPACE FOR SKIP-DASH 140 (5 1/2) C-C BETWEEN SOLID LINE AND SKIP-DASH LINE SEE TYPICAL TWO-WAY LEFT TURN MARKING DETAIL
CROSSWALK LINES (PEDESTRIAN) A. DIAGONALS (BIKE & EQUESTRIAN) B. LONGITUDINAL BARS (SCHOOL)	2 @ 150 (6) 300 (12) @ 45° 300 (12) @ 90°	SOLID SOLID SOLID	WHITE WHITE WHITE	NOT LESS THAN 1.8 m (6') APART 600 (2') APART 600 (2') APART SEE TYPICAL CROSSWALK MARKING DETAILS.
STOP LINES	600 (24)	SOLID	WHITE	PLACE 1.2 m (4') IN ADVANCE OF AND PARALLEL TO CROSSWALK, IF PRESENT. OTHERWISE, PLACE AT DESIRED STOPPING POINT, PARALLEL TO CROSSROAD CENTERLINE, WHERE POSSIBLE
PAINTED MEDIANS	2 @ 100 (4) WITH 300 (12) DIAGONALS @ 45° NO DIAGONALS USED FOR 1.2 m (4') WIDE MEDIANS	SOLID	YELLOW: TWO WAY TRAFFIC WHITE: ONE WAY TRAFFIC	280 (11) C-C FOR THE DOUBLE LINE SEE TYPICAL PAINTED MEDIAN MARKING.
CORE MARKING AND CHANNELIZING LINES	200 (8) WITH 300 (12) DIAGONALS @ 45°	SOLID	WHITE	DIAGONALS: 4.5 m (15') C-C (LESS THAN 50 km/h (30 MPH)) 6 m (20') C-C (50 km/h (30 MPH) TO 70 km/h (45 MPH)) 9 m (30') C-C (OVER 70 km/h (45 MPH))
RAILROAD CROSSING	600 (24) TRANSVERSE LINES; "RR" IS 1.8 m (6') LETTERS; 400 (16) LINE FOR "X"	SOLID	WHITE	SEE STATE STANDARD 780001 AREA OF: "R"=0.33m ² (3.6 SQ. FT.) EACH "X"=5.0 m ² (54.0 SQ. FT.)
SHOULDER DIAGONALS	300 (12) @ 45°	SOLID	WHITE - RIGHT YELLOW - LEFT	15 m (50') C-C (LESS THAN 50 km/h (30 MPH)) 25 m (75') C-C (50 km/h (30 MPH) TO 70 km/h (45 MPH)) 45 m (150') C-C (OVER 70 km/h (45 MPH))

FOR FURTHER DETAILS ON PAVEMENT MARKING REFER TO STANDARD SPECIFICATIONS FOR ROAD AND BRIDGE CONSTRUCTION ADOPTED JANUARY 1, 1997 AND STATE STANDARD 780001.

All dimensions are in millimeters (inches) unless otherwise shown.

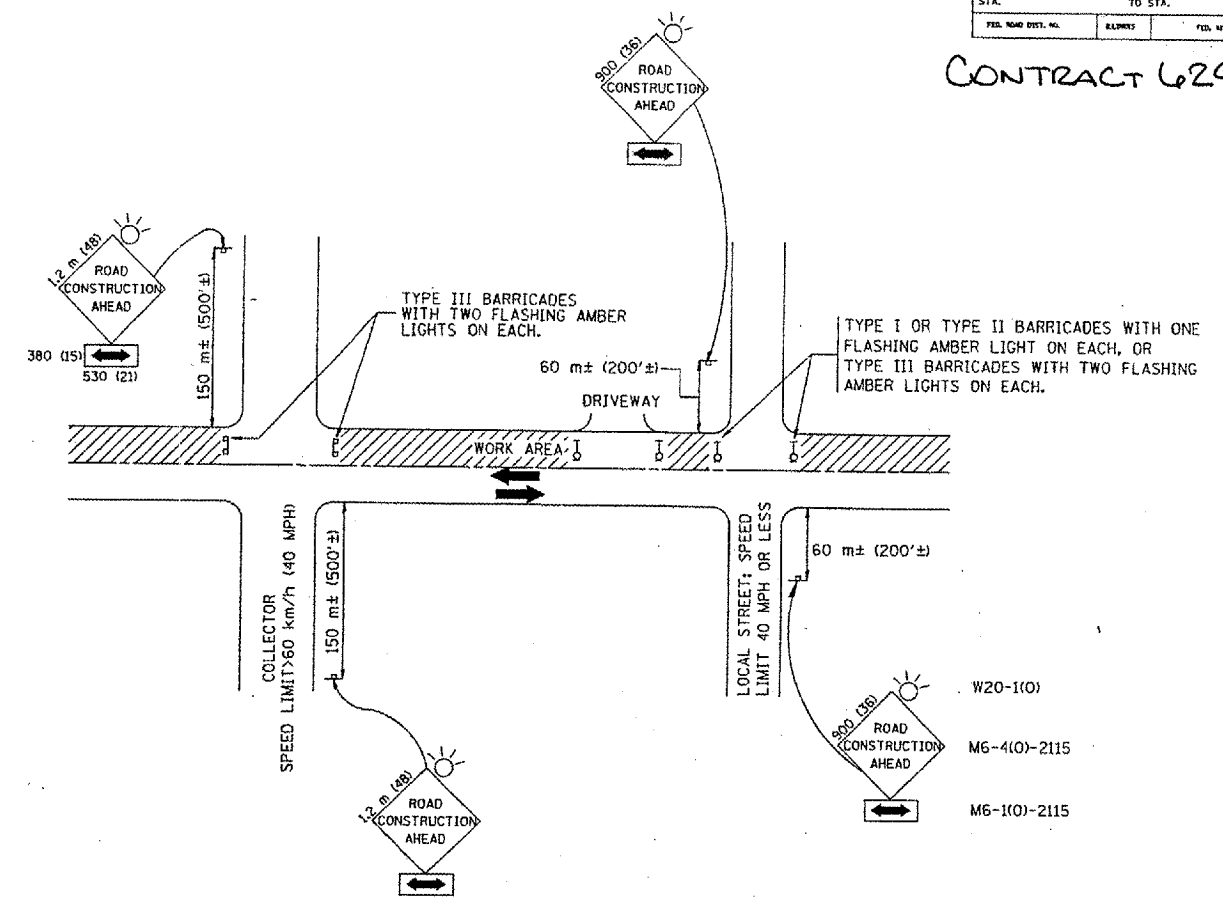
ILLINOIS DEPARTMENT OF TRANSPORTATION
 DISTRICT ONE
 TYPICAL PAVEMENT MARKINGS

REVISIONS	
NAME	DATE
EVERS	03-19-90
T. RAMMACHER	10-27-94
ALEX HOUSEH	10-09-96
ALEX HOUSEH	10-17-96
T. RAMMACHER	01-06-00

SCALE: NONE
 DATE 01/27/00
 DRAWN BY CADD
 CHECKED BY

F. A. DIST.	SECTION	COUNTY	TOTAL SHEETS	SHEET NO.
			13	13
STA.		TO STA.		
FED. ROAD DIST. NO.	ROUTE	FED. AID PROJECT		

CONTRACT 62943



TRAFFIC CONTROL AND PROTECTION FOR SIDE ROADS, INTERSECTIONS, AND DRIVEWAYS

NOTES:

- A. FOR NO LANE RESTRICTION ON THE SIDE ROAD OR DRIVEWAYS
- SIDE ROAD WITH A SPEED LIMIT OF 60 km/h (40 MPH) OR LESS AS SHOWN ON THE DRAWING AND AS DIRECTED BY THE ENGINEER:
 - ONE **ROAD CONSTRUCTION AHEAD** SIGN 900x366 WITH A FLASHER AND FLAG MOUNTED ON IT APPROXIMATELY 60 m (200') IN ADVANCE OF THE MAIN ROUTE.
 - THE CLOSED PORTION OF THE MAIN ROUTE SHALL BE PROTECTED BY BLOCKING WITH TYPE I, TYPE II OR TYPE III BARRICADES, 1/3 OF THE CROSS SECTION OF THE CLOSED PORTION.
 - SIDE ROAD WITH A SPEED LIMIT GREATER THAN 60 km/h (40 MPH) AS SHOWN ON THE DRAWING AND AS DIRECTED BY THE ENGINEER:
 - ONE **ROAD CONSTRUCTION AHEAD** SIGN 1.2 m x 1.2 m (48x48) WITH A FLASHER MOUNTED ON IT APPROXIMATELY 150 m (500') IN ADVANCE OF THE MAIN ROUTE.
 - THE CLOSED PORTION OF THE MAIN ROUTE SHALL BE PROTECTED BY BLOCKING WITH TYPE III BARRICADES, 1/2 OF THE CROSS SECTION OF THE CLOSED PORTION.
 - WHEN THE SIDE ROAD LIES BETWEEN THE BEGINNING OF THE MAINLINE SIGNING AND THE WORK ZONE, A SINGLE HEADED ARROW (M6-1) SHALL BE USED IN LIEU OF THE DOUBLE HEADED ARROW (M6-4).
- B. FOR A LANE CLOSURE ON A SIDE ROAD OR DRIVEWAY:
- USE APPLICABLE PORTIONS OF THE TYPICAL APPLICATION OF TRAFFIC CONTROL DEVICES (STD. 70150L, STD. 701606 OR THE APPROPRIATE STANDARD). THE SPACING OF SIGNS AND BARRICADES SHALL BE ADJUSTED FOR FIELD CONDITIONS AS DIRECTED BY THE ENGINEER. THE DIRECTIONAL ARROW SHALL BE COVERED OR REMOVED WHEN NO LONGER CONSISTENT WITH THE SIDE ROAD LANE CLOSURE.
- C. ADVANCE WARNING SIGNS ARE TO BE OMITTED ON DRIVEWAY UNLESS OTHERWISE NOTED.
- D. THE TRAFFIC CONTROL AND PROTECTION FOR SIDE ROADS, INTERSECTIONS, AND DRIVEWAYS SHALL BE INCIDENTAL TO THE COST OF SPECIFIED TRAFFIC CONTROL STANDARDS OR ITEMS.

All dimensions are in millimeters (inches) unless otherwise shown.

ILLINOIS DEPARTMENT OF TRANSPORTATION
 TRAFFIC CONTROL AND PROTECTION
 FOR
 SIDE ROADS, INTERSECTIONS, AND
 DRIVEWAYS

REVISIONS		
NAME	DATE	
LHA	6/89	
T. RAMMACHER	09/08/94	
J. OBERLE	10/18/95	
A. HOUSEH	03/06/96	
A. HOUSEH	10/15/96	
T. RAMMACHER	01/06/00	

SCALE: NONE
 DATE: 01/27/00
 DRAWN BY
 CHECKED BY