

DISTRICT ONE BUREAU OF MAINTENANCE: J. STUMPNER
MAINTENANCE LANDSCAPE DESIGNER: R. WANNER / M. DEL ROSARIO (847) 705-4171

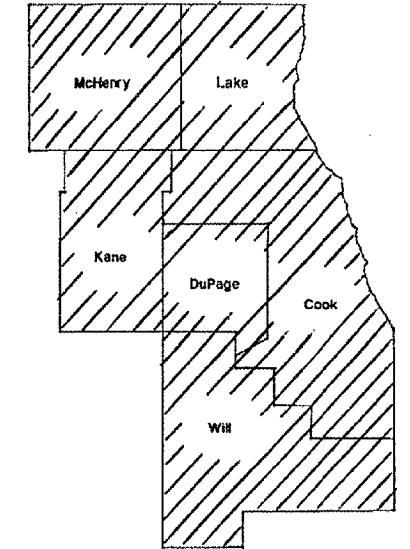
ROUTE	SECTION	COUNTY	TOTAL SHEETS	SHEET NUMBER
VARIOUS	2005-021LS	VARIOUS	25	1

CONTRACT 62950

STATE OF ILLINOIS
DEPARTMENT OF TRANSPORTATION
DIVISION OF HIGHWAYS
DISTRICT ONE

PROPOSED HIGHWAY PLANS

ROUTE: VARIOUS
SECTION 2005-021LS
LANDSCAPE REPAIR AND RENOVATION
VARIOUS COUNTIES
C-91-203-05

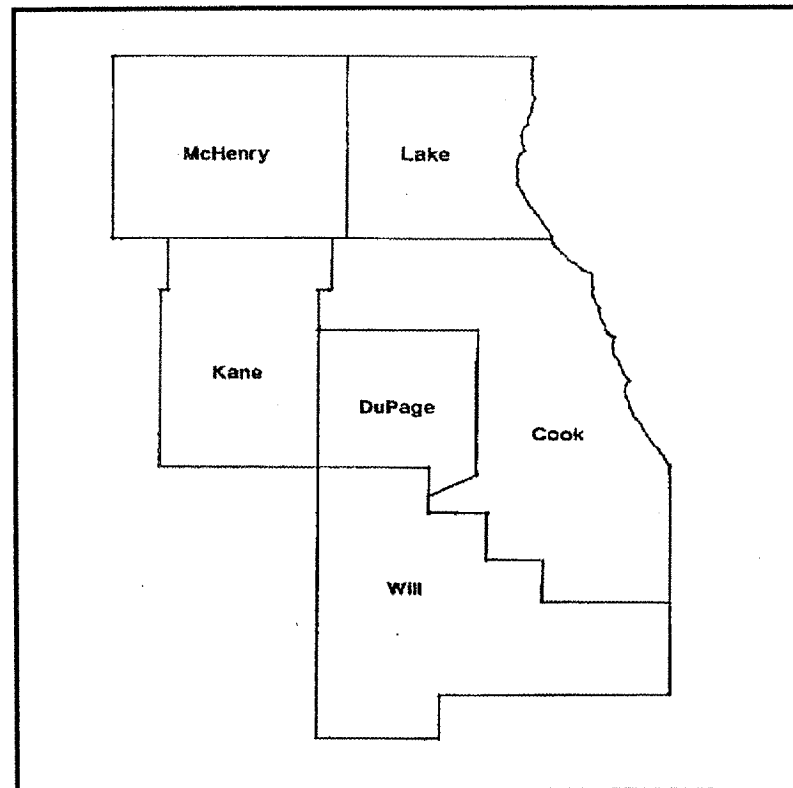


LOCATION OF IMPROVEMENT INDICATED THUS:



FOR INDEX OF SHEETS SEE PAGE 2

IMPROVEMENT IS IN VARIOUS
LOCATIONS WITHIN DISTRICT
ONE



STATE OF ILLINOIS
DEPARTMENT OF TRANSPORTATION
DIVISION OF HIGHWAYS

SUBMITTED: May 25 2005
[Signature]
DISTRICT ENGINEER

July 1 2005
Mike Fine
ENGINEER OF DESIGN AND ENVIRONMENT

July 1 2005
Victor Modler
DIRECTOR, DIVISION OF HIGHWAYS

PRINTED BY THE AUTHORITY
OF THE STATE OF ILLINOIS

J.U.L.I.E.: JOINT UTILITY LOCATION
INFORMATION FOR EXCAVATION
(800) 892-0123

ROUTE	SECTION	COUNTY	TOTAL SHEETS	SHEET NUMBER
VARIOUS	2005-021LS	VARIOUS	25	2

CONTRACT 62950

INDEX OF SHEETS

- 1 TITLE SHEET
- 2 INDEX OF SHEETS, STATE STANDARDS AND GENERAL NOTES
- 3 SUMMARY OF QUANTITIES
- 4 SAMPLE WORK ORDER
- 5 LOCATION SUMMARY
- 6-24 LAYOUT PLAN SHEETS
- 25 TC 17 TRAFFIC CONTROL DETAILS FOR FREEWAY SHOULDER CLOSURES PARTIAL RAMP CLOSURES

STATE STANDARDS

- 701001-01 701006-02
- 701101-01 701311-02
- 702001-05 701400-02
- 701406-04

GENERAL NOTES

FOR ARTERIALS THE CONTRACTOR SHALL CONTACT THE DISTRICT ONE TRAFFIC CONTROL SUPERVISOR AT (847) 705-4470 A MINIMUM OF 72 HOURS IN ADVANCE OF BEGINNING WORK.

BEFORE STARTING ANY EXCAVATION THE CONTRACTOR SHALL CALL THE STATE ELECTRICAL MAINTENANCE CONTRACTOR AT (773) 287-7600, EXTENSION 601, FOR FIELD LOCATIONS OF BURIED CABLE.

THE COST OF REMOVING AND DISPOSING DAMAGED TREES IN THIS CONTRACT SHALL BE INCLUDED IN THE CONTRACT UNIT PRICES FOR THE REPLACEMENT TREES.

ILLINOIS DEPARTMENT OF TRANSPORTATION

LANDSCAPE REPAIR
INDEX OF SHEETS
GENERAL NOTES
STATE STANDARDS

ROUTE	SECTION	COUNTY	TOTAL SHEETS	SHEET NUMBER
VARIOUS	2005-021LS	VARIOUS	25	3

SUMMARY OF QUANTITIES

CONTRACT 62950

PAY ITEM	DESCRIPTION	UNIT	MCHD FUND	CONTRACT MAINT FUND	URBAN 4003 TOTAL
X0322314	WEED CONTROL, BROADLEAF IN TURF	GALLON	0	5	5
21101615	TOPSOIL FURNISH AND PLACE, 4"	SQ YD	4840	5000	9840
25000210	SEEDING, CLASS 2A	ACRE	1	1.5	2.5
25000400	NITROGEN FERTILIZER NUTRIENT	POUND	90	135	225
25000500	PHOSPHORUS FERTILIZER NUTRIENT	POUND	90	135	225
25000600	POTASSIUM FERTILIZER NUTRIENT	POUND	90	135	225
25003210	INTERSEEDING, CLASS 2A	ACRE	0	3	3
25003310	INTERSEEDING, CLASS 4	ACRE	0	2.5	2.5
25100630	EROSION CONTROL BLANKET	SQ YD	4840	5000	9840
25200110	SODDING, SALT TOLERANT	SQ YD	300	300	600
A2002014	TREE, AESCULUS GLABRA (OHIO BUCKEYE), 1 3/4" CALIPER, BALLED AND BURLAPPED	EACH	3	25	28
A2005014	TREE, GYMNOCLADUS DIOICUS (KENTUCKY COFFEETREE), 1 3/4" CALIPER, BALLED AND BURLAPPED	EACH	4	35	39
A2005114	TREE, JUGLANS NIGRA (BLACK WALNUT), 1 3/4" CALIPER, BALLED AND BURLAPPED	EACH	3	13	16
A2007916	TREE, TILIA AMERICANA REDMOND (REDMOND AMERICAN LINDEN), 2" CALIPER, BALLED AND BURLAPPED	EACH	7	20	27
A2008114	TREE, TILIA CORDATA GREENSPIRE (GREENSPIRE LITTLE LEAF LINDEN), 1 3/4" CALIPER, BALLED AND BURLAPPED	EACH	4	15	19
A2014914	TREE, GLEDITSIA TRIACANTHOS INERMIS 'HALKA' (HALKA THORNLESS COMMON HONEYLOCUST), 1 3/4" CALIPER, BALLED AND BURLAPPED	EACH	6	36	42
B2005014	TREE, MALUS 'SNOWDRIFT' (SNOWDRIFT CRABAPPLE) 1 3/4" CALIPER, TREE FORM, BALLED AND BURLAPPED	EACH	9	10	19
B2006364	TREE, SYRINGA RETICULATA IVORY SILK (IVORY SILK JAPANESE TREE LILAC), 5' HEIGHT, CLUMP FORM, BALLED AND BURLAPPED	EACH	3	10	13
K0026700	TREE CARE	EACH	0	1050	1050
K0026810	SHRUB CARE	EACH	0	2725	2725
K0026820	VINE CARE	EACH	0	2400	2400
K0026850	PERENNIAL PLANT CARE	SQ YD	0	2100	2100
K0030450	PERENNIAL PLANTS, DAFFODIL BULBS	UNIT	0	21	21
X0322856	WEED CONTROL, NON-SELECTIVE AND NON-RESIDUAL	GALLON	0	5	5

ILLINOIS DEPARTMENT OF TRANSPORTATION
SUMMARY OF QUANTITIES

ROUTE	SECTION	COUNTY	TOTAL SHEETS	SHEET NUMBER
VARIOUS	2005-021LS	VARIOUS	25	4

CONTRACT 62950



Landscaping Repair and Rehabilitation Work Order

Contract #: _____

W.O. Number: _____

Date: _____

Claim Number: _____

Route: _____

Location: _____

Item	Unit	Quantity	Item	Unit	Quantity
IIA Seeding	Sq. Yd.				
Topsoil 4"	Sq. Yd.				
Sod	Sq. Yd.				
	Each				
	Each				
	Each				
	Each				

Special Instructions:

SAMPLE WORK ORDER

Prepared By: _____ Date repair work completed: _____

Contractor Resident Engineer

Copy Distribution:
White - Contractor
Yellow - Pink - Resident Engineer
Goldenrod - Inspector

ILLINOIS DEPARTMENT OF TRANSPORTATION

SAMPLE WORK ORDER

ROUTE	SECTION	COUNTY	TOTAL SHEETS	SHEET NUMBER
VARIOUS	2005-021LS	VARIOUS	25	5

CONTRACT 62950

LOCATION SUMMARY

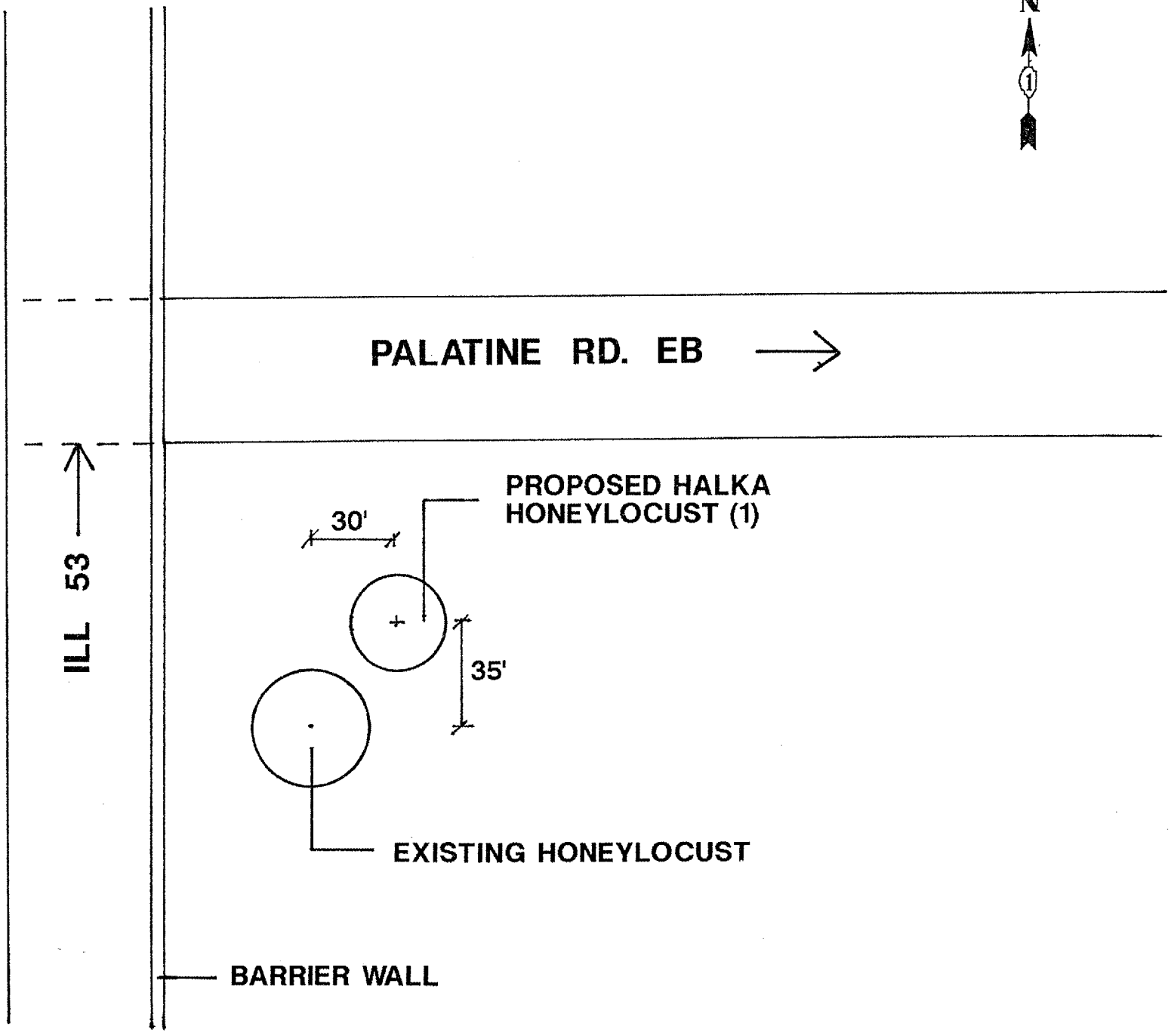
COUNTY	CITY/TOWN	CLAIM #	SHEET #	GENERAL LOCATION
COOK	ARLINGTON HTS.	713409	6	IL 53 @ PALATINE RD.
COOK	BUFFALO GROVE	693522	7	IL 68 @ VERNON LN.
COOK	SKOKIE	711757 711794 713624	8	I-94 (EDENS) @ CHURCH ST.
COOK	MORTON GROVE	711760	9	I-94 (EDENS) @ CLEVELAND ST.
COOK	CHICAGO	711780 711802 712031	10	I-90 (KENNEDY) @ SAYRE ENTRANCE RAMP
COOK	CHICAGO	711787	11	I-90 (KENNEDY) @ NAGLE
COOK	CHICAGO	N/A	12	I-90/94 (KENNEDY) FROM FULLERTON TO ASHLAND
COOK	CHICAGO	N/A	13	ARCHER FROM HALSTED TO WOOD
COOK	PROVISO	711812 713638	14	I-290 (EISENHOWER) @ DES PLAINES AVE.
COOK	HOMETOWN	N/A	15	SW HWY NEAR DUFFY RD.
COOK	CALUMET PARK	712024 712029	16	I-57 @ 127 TH ST.
COOK	ALSIP	N/A	17	127 TH ST. @ CICERO
COOK	PALOS	N/A	18	LAGRANGE RD. @ 123 RD ST.
DUPAGE	ADDISON	712838 713476	19	I-290 @ IL.83
DUPAGE	YORK	711824 713071	20	I-290 @ IL 64
DUPAGE	BLOOMINGDALE	712835	21	I-290 S/O US 20 RAMP
WILL	HOMER GLEN	713069	22	RT. 171 @ N. STATE ST.
WILL	WILMINGTON	712045 712053	23	I-55 @ 5 TH ST
VARIOUS	VARIOUS	N/A	24	VARIOUS

ILLINOIS DEPARTMENT OF TRANSPORTATION

LOCATION SUMMARY

ROUTE	SECTION	COUNTY	TOTAL SHEETS	SHEET NUMBER
VARIOUS	2005-021LS	VARIOUS	25	6

CONTRACT 62950



GENERAL LOCATION MAP

COUNTY: COOK
CLAIM #: 713409

CITY/TOWN: ARLINGTON HEIGHTS

SCHEDULE OF LANDSCAPE ITEMS

DESCRIPTION	QTY/UNIT
GLEDITSIA TRIACANTHOS VAR. INERMIS 'HALKA' (HALKA HONEYLOCUST)	1 EACH

ILLINOIS DEPARTMENT OF TRANSPORTATION

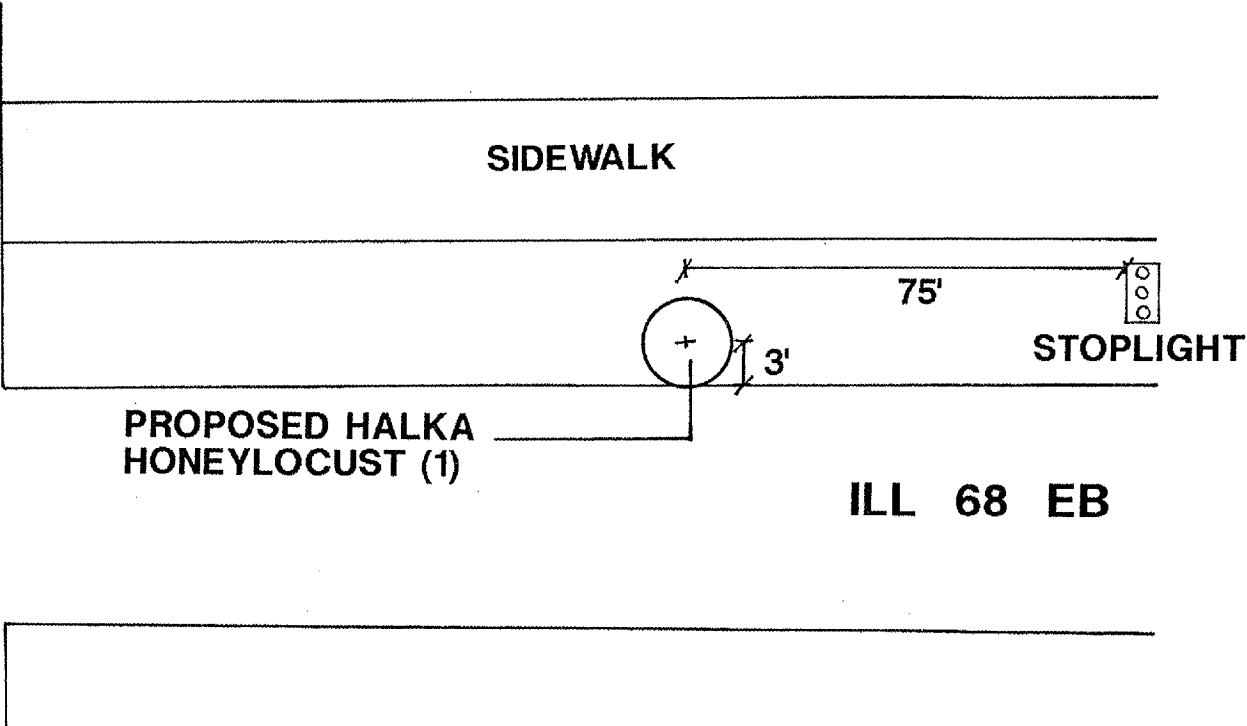
LANDSCAPE REPAIR LOCATION AND LAYOUT PLAN

ROUTE	SECTION	COUNTY	TOTAL SHEETS	SHEET NUMBER
VARIOUS	2005-021LS	VARIOUS	25	7

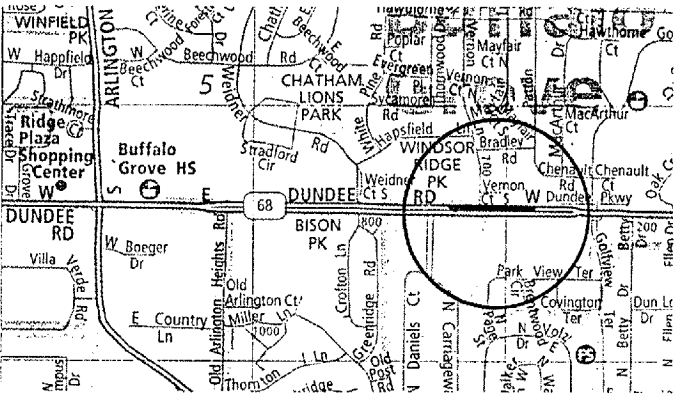
CONTRACT 62950



VERNON LN.



GENERAL LOCATION MAP



COUNTY: COOK
CLAIM #: 693522

CITY/TOWN: BUFFALO GROVE

SCHEDULE OF LANDSCAPE ITEMS
DESCRIPTION QTY/UNIT

GLEDITSIA TRIACANTHOS INERMIS 'HALKA'
(HALKA HONEYLOCUST) 1 EACH

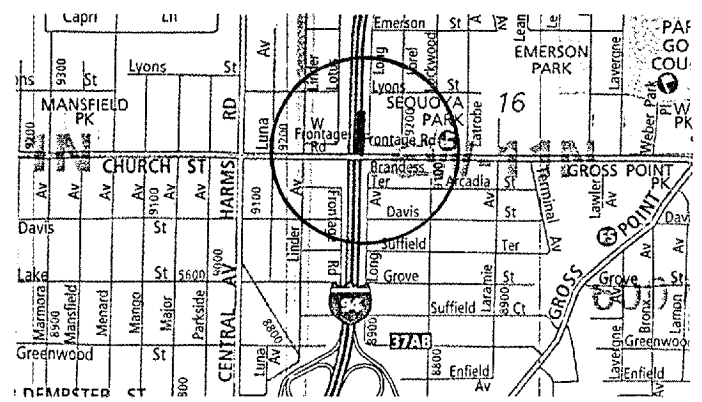
ILLINOIS DEPARTMENT OF TRANSPORTATION
LANDSCAPE REPAIR LOCATION AND LAYOUT PLAN

ROUTE	SECTION	COUNTY	TOTAL SHEETS	SHEET NUMBER
VARIOUS	2005-021LS	VARIOUS	25	8

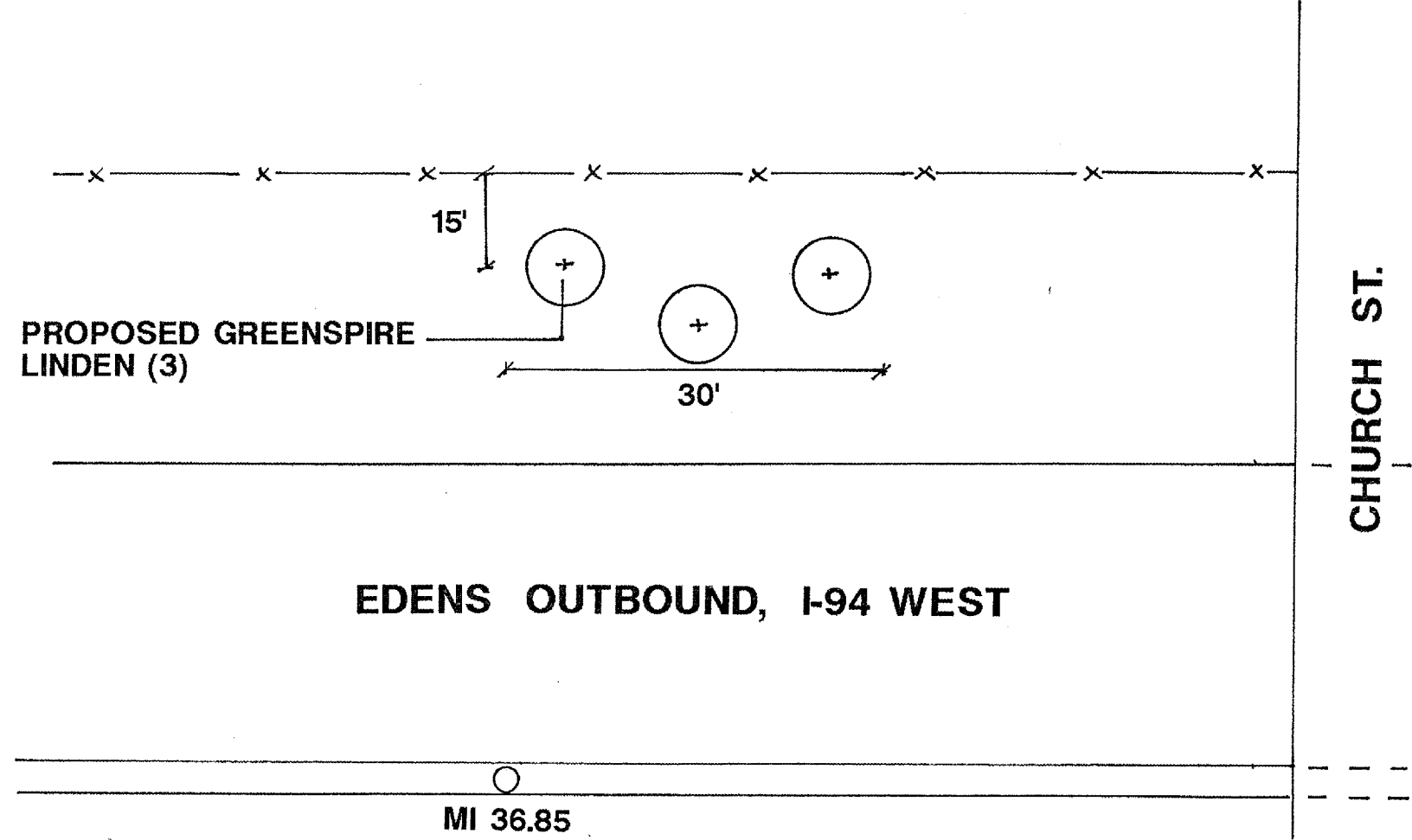
CONTRACT 62950



GENERAL LOCATION MAP



COUNTY: COOK
 CLAIM #: 711757 711794 713624
 CITY/TOWN: SKOKIE



SCHEDULE OF LANDSCAPE ITEMS

DESCRIPTION	QTY/UNIT
TILIA CORDATA 'GREENSPIRE' (GREENSPIRE LITTLE LEAF LINDEN)	3 EACH

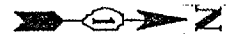
ILLINOIS DEPARTMENT OF TRANSPORTATION

LANDSCAPE REPAIR LOCATION AND LAYOUT PLAN

PLANT TREES 15' O.C.

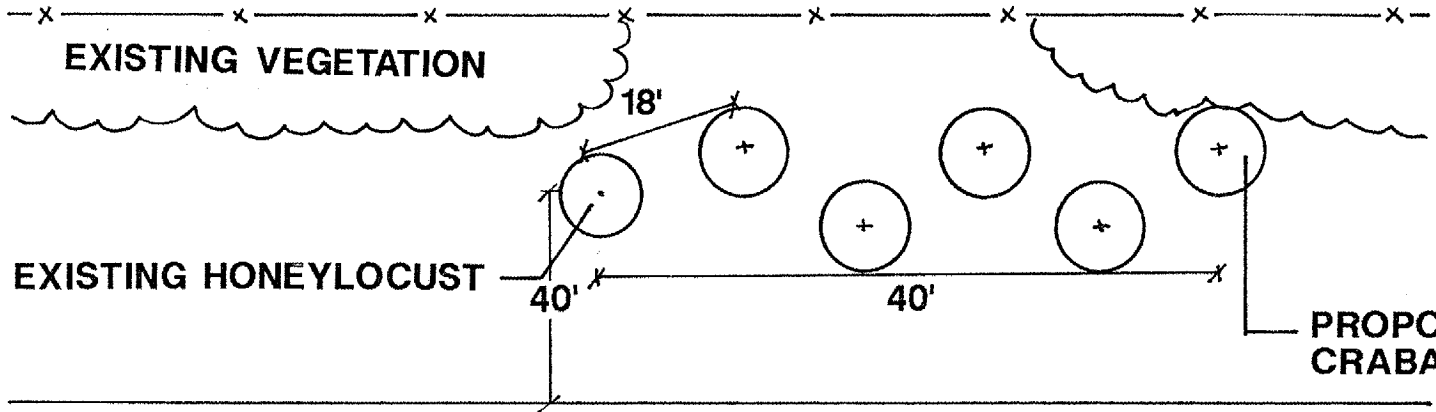
ROUTE VARIOUS	SECTION 2005-021LS	COUNTY VARIOUS	TOTAL SHEETS 25	SHEET NUMBER 9
------------------	-----------------------	-------------------	-----------------------	----------------------

CONTRACT 62950



CLEVELAND ST.

MAJOR AVE.



← IB EDENS, I-94 EAST

MI 38.23

GENERAL LOCATION MAP

COUNTY: COOK
CLAIM #: 711760

CITY/TOWN: MORTON GROVE

SCHEDULE OF LANDSCAPE ITEMS

DESCRIPTION	QTY/UNIT
MALUS 'SNOWDRIFT' (SNOWDRIFT CRABAPPLE)	5 EACH

PLANT TREES 15' O.C., STAGGERED

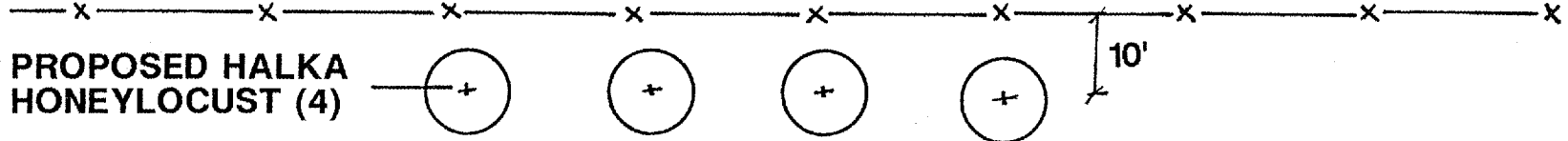
ILLINOIS DEPARTMENT OF TRANSPORTATION
LANDSCAPE REPAIR LOCATION AND LAYOUT PLAN

ROUTE VARIOUS	SECTION 2005-021LS	COUNTY VARIOUS	TOTAL SHEETS 25	SHEET NUMBER 10
------------------	-----------------------	-------------------	-----------------------	-----------------------

CONTRACT 62950



GREGORY ST.



PROPOSED HALKA HONEYLOCUST (4)

LP GF2

MI 81.69
LP GF3

← **IB SAYRE ENTRANCE RAMP**

← **IB KENNEDY, I-90 EAST**

PLANT TREES 20' O.C.

GENERAL LOCATION MAP

COUNTY: COOK
CLAIM #: 711780

711802

CITY/TOWN: CHICAGO
712031

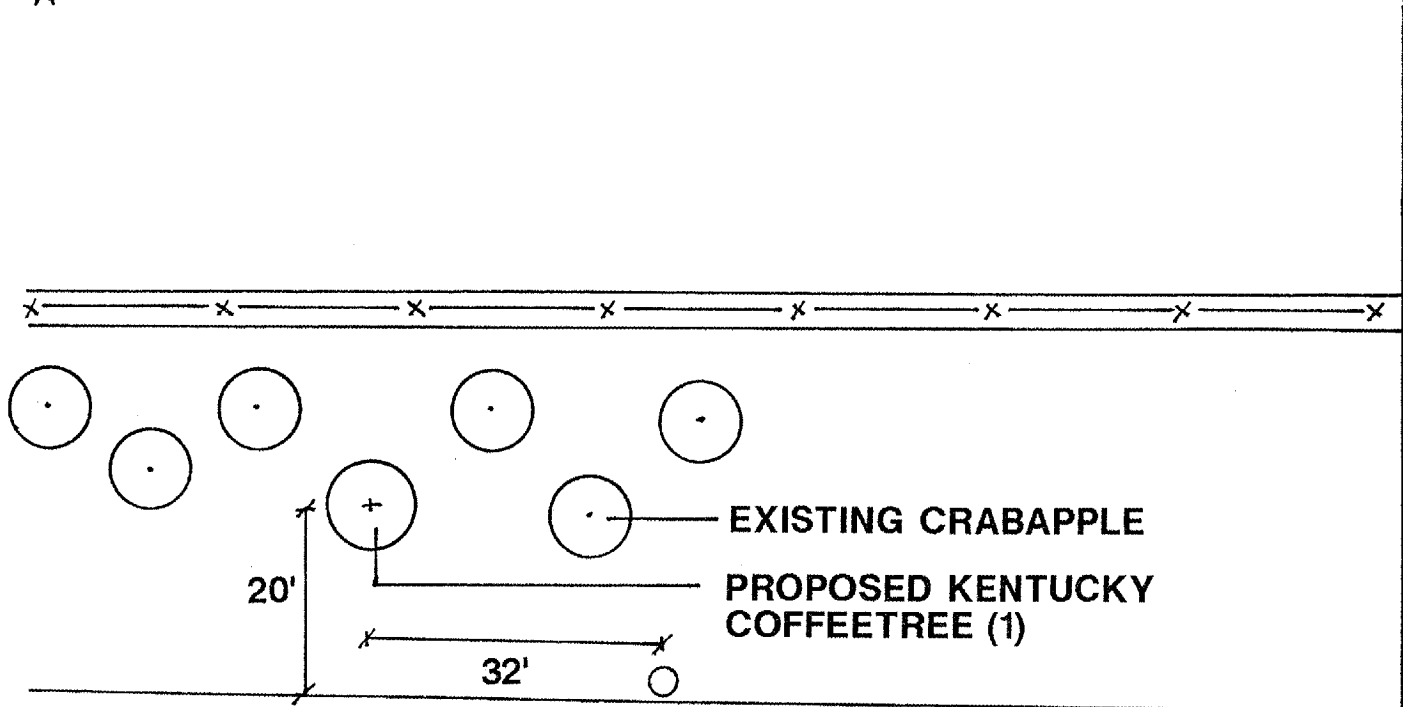
SCHEDULE OF LANDSCAPE ITEMS

DESCRIPTION	QTY/UNIT
GLEDITSIA TRIACANTHOS VAR. INERMIS 'HALKA' (HALKA HONEYLOCUST)	4 EACH

ILLINOIS DEPARTMENT OF TRANSPORTATION
LANDSCAPE REPAIR LOCATION AND LAYOUT PLAN

ROUTE	SECTION	COUNTY	TOTAL SHEETS	SHEET NUMBER
VARIOUS	2005-021LS	VARIOUS	25	11

CONTRACT 62950

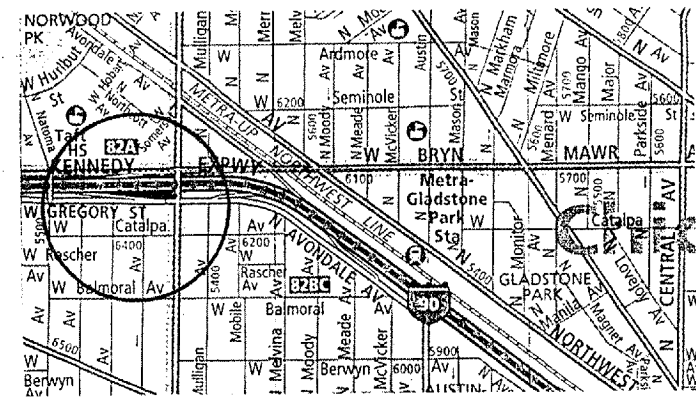


MI 82.19
LP HC10

← OB KENNEDY, I-90 WEST

NAGLE AVE.

GENERAL LOCATION MAP



COUNTY: COOK
CLAIM #: 711787

CITY/TOWN: CHICAGO

SCHEDULE OF LANDSCAPE ITEMS

DESCRIPTION	QTY/UNIT
GYMNOCLADUS DIOICUS (KENTUCKY COFFEETREE)	1 EACH

ILLINOIS DEPARTMENT OF TRANSPORTATION

LANDSCAPE REPAIR LOCATION AND
LAYOUT PLAN

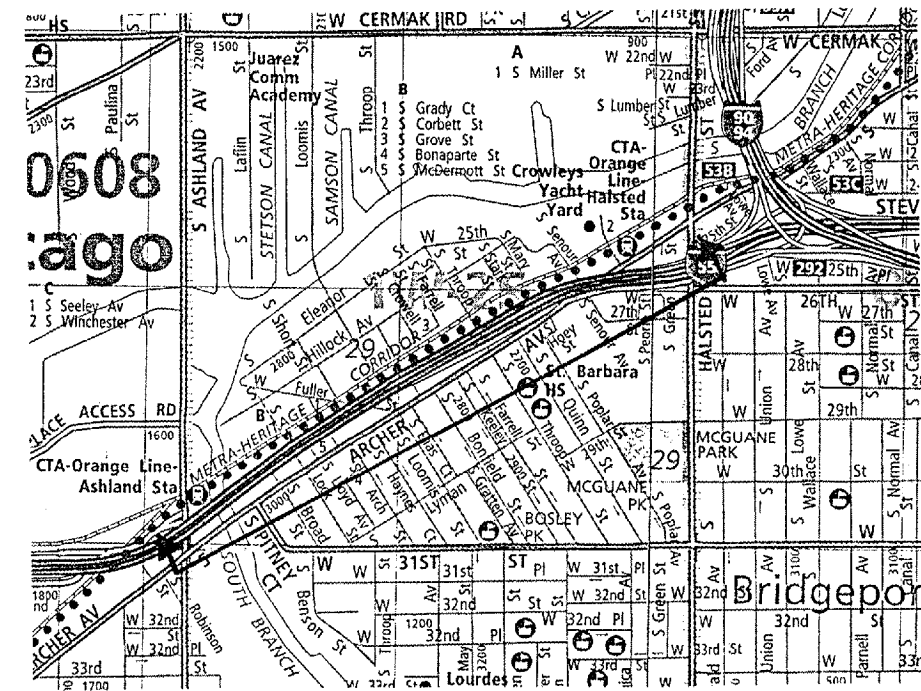
ROUTE	SECTION	COUNTY	TOTAL SHEETS	SHEET NUMBER
VARIOUS	2005-021LS	VARIOUS	25	13

CONTRACT 62950

SCHEDULE OF LANDSCAPE ITEMS

DESCRIPTION	QTY/UNIT
AESCULUS GLABRA (OHIO BUCKEYE)	10 EACH
GLEDITSIA TRIACANTHOS VAR. INERMIS 'HALKA' (HALKA HONEYLOCUST)	26 EACH
GYMNOCLADUS DIOICUS (KENTUCKY COFFEETREE)	15 EACH
JUGLANS NIGRA (BLACK WALNUT)	10 EACH
TILIA AMERICANA REDMOND (REDMOND AMERICAN LINDEN)	10 EACH
TILIA CORDATA GREENSPIRE (GREENSPIRE LITTLELEAF LINDEN)	10 EACH
TREE CARE	1050 EACH
SHRUB CARE	2725 EACH
VINE CARE	2400 EACH
PERENNIAL PLANT CARE	2100 SQ YD
WEED CONTROL, NON-SELECTIVE AND NON-RESIDUAL	3 GALLON
WEED CONTROL, BROADLEAF IN TURF	2 GALLON

GENERAL LOCATION MAP



COUNTY: COOK
CLAIM #: N/A

CITY/TOWN: CHICAGO
(ALONG ARCHER AVENUE -
BETWEEN HALSTED STREET
AND WOOD STREET)

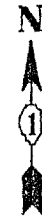
PLEASE CONTACT FABIOLA QUIROZ
72 HOURS PRIOR TO PLANTING
AT 847-705-4596 FOR LAYOUT PLAN

ILLINOIS DEPARTMENT OF TRANSPORTATION

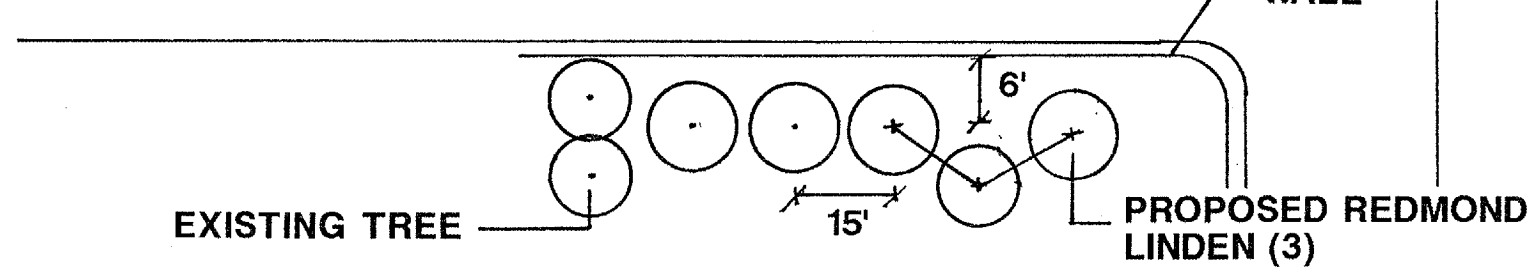
LANDSCAPE REPAIR LOCATION AND
LAYOUT PLAN

ROUTE	SECTION	COUNTY	TOTAL SHEETS	SHEET NUMBER
VARIOUS	2005-021LS	VARIOUS	25	14

CONTRACT 62950



OB DES PLAINES AVE ENTRANCE RAMP



EXISTING TREE

15'

6'

PROPOSED REDMOND LINDEN (3)

WALL

DES PLAINES AVE.

← OB EISENHOWER, I-290 WEST

PLANT TREES 15' O.C., STAGGERED

GENERAL LOCATION MAP



COUNTY: COOK
CLAIM #: 711812

713638

CITY/TOWN: PROVISO

SCHEDULE OF LANDSCAPE ITEMS

DESCRIPTION	QTY/UNIT
TILIA AMERICANA 'REDMOND' (REDMOND AMERICAN LINDEN)	3 EACH

ILLINOIS DEPARTMENT OF TRANSPORTATION
LANDSCAPE REPAIR LOCATION AND LAYOUT PLAN

ROUTE	SECTION	COUNTY	TOTAL SHEETS	SHEET NUMBER
VARIOUS	2005-021LS	VARIOUS	25	15

CONTRACT 62950

PLEASE CONTACT STEVE LIPKIE 72 HOURS PRIOR TO PLANTING AT (847) 705-4173 FOR LAYOUT PLAN.

GENERAL LOCATION MAP

COUNTY: COOK
CLAIM #: N/A

CITY/TOWN: HOMETOWN

SCHEDULE OF LANDSCAPE ITEMS

DESCRIPTION	QTY/UNIT
FURNISH & PLACE TOPSOIL	2500 SY
SEEDING, CLASS 2A	0.5 ACRE
NITROGEN	45 LBS.
PHOSPHORUS	45 LBS.
POTASSIUM	45 LBS.
INTERSEEDING, CLASS 2A	0.5 ACRE
EROSION CONTROL BLANKET	2500 SY

ILLINOIS DEPARTMENT OF TRANSPORTATION

LANDSCAPE REPAIR LOCATION AND
LAYOUT PLAN

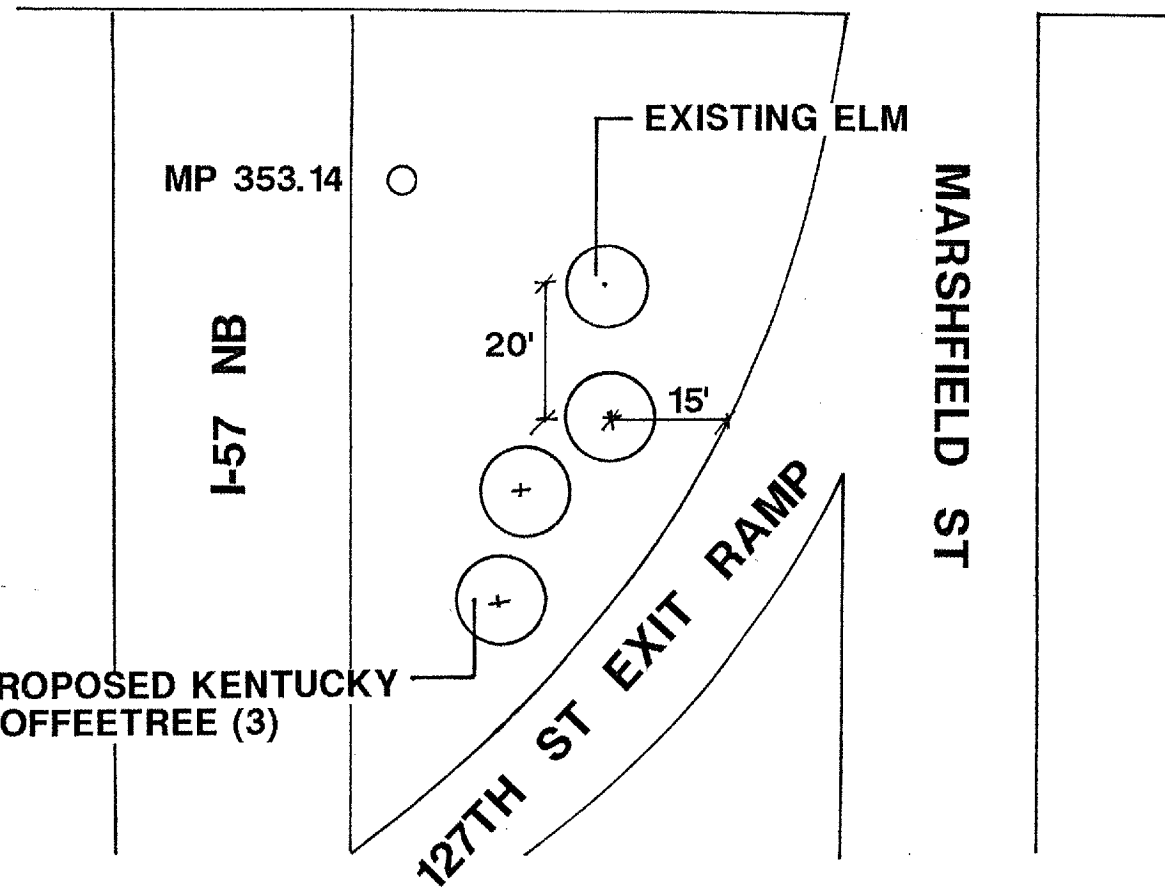
ROUTE	SECTION	COUNTY	TOTAL SHEETS	SHEET NUMBER
VARIOUS	2005-021LS	VARIOUS	25	16



CONTRACT 62950



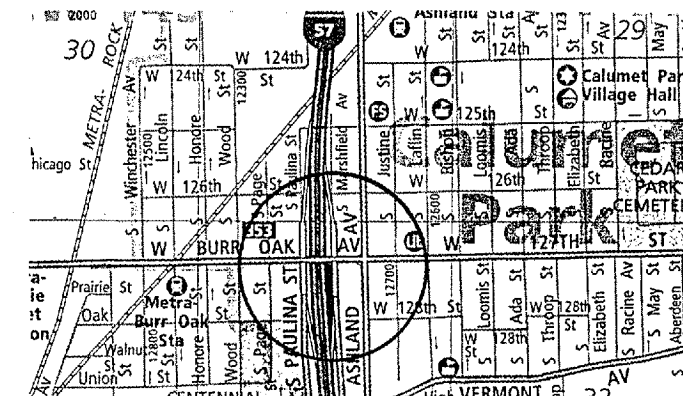
127TH STREET



MARSHFIELD ST

PLANT TREES 20' O.C.

GENERAL LOCATION MAP



COUNTY: COOK
CLAIM #: 712024

CITY/TOWN: CALUMET PARK
712029

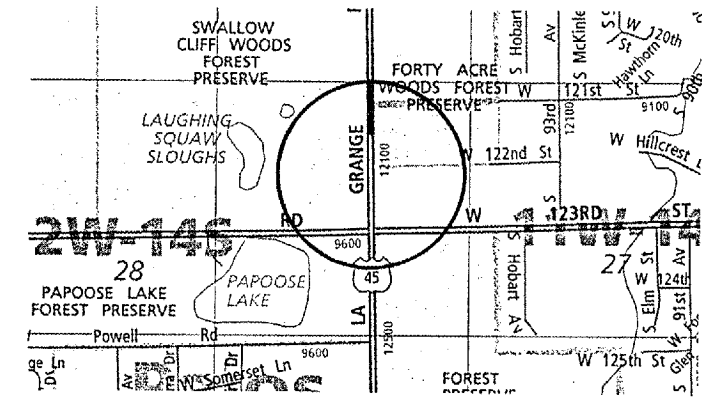
SCHEDULE OF LANDSCAPE ITEMS	
DESCRIPTION	QTY/UNIT
GYMNOCLADUS DIOICUS (KENTUCKY COFFEETREE)	3 EACH

ILLINOIS DEPARTMENT OF TRANSPORTATION
LANDSCAPE REPAIR LOCATION AND
LAYOUT PLAN

ROUTE	SECTION	COUNTY	TOTAL SHEETS	SHEET NUMBER
VARIOUS	2005-021LS	VARIOUS	25	18

CONTRACT 62950

GENERAL LOCATION MAP



COUNTY: COOK
CLAIM #: N/A

CITY/TOWN: PALOS

PLEASE CONTACT STEVE LIPKIE 72 HOURS PRIOR TO PLANTING AT (847) 705-4173 FOR LAYOUT PLAN.

SCHEDULE OF LANDSCAPE ITEMS

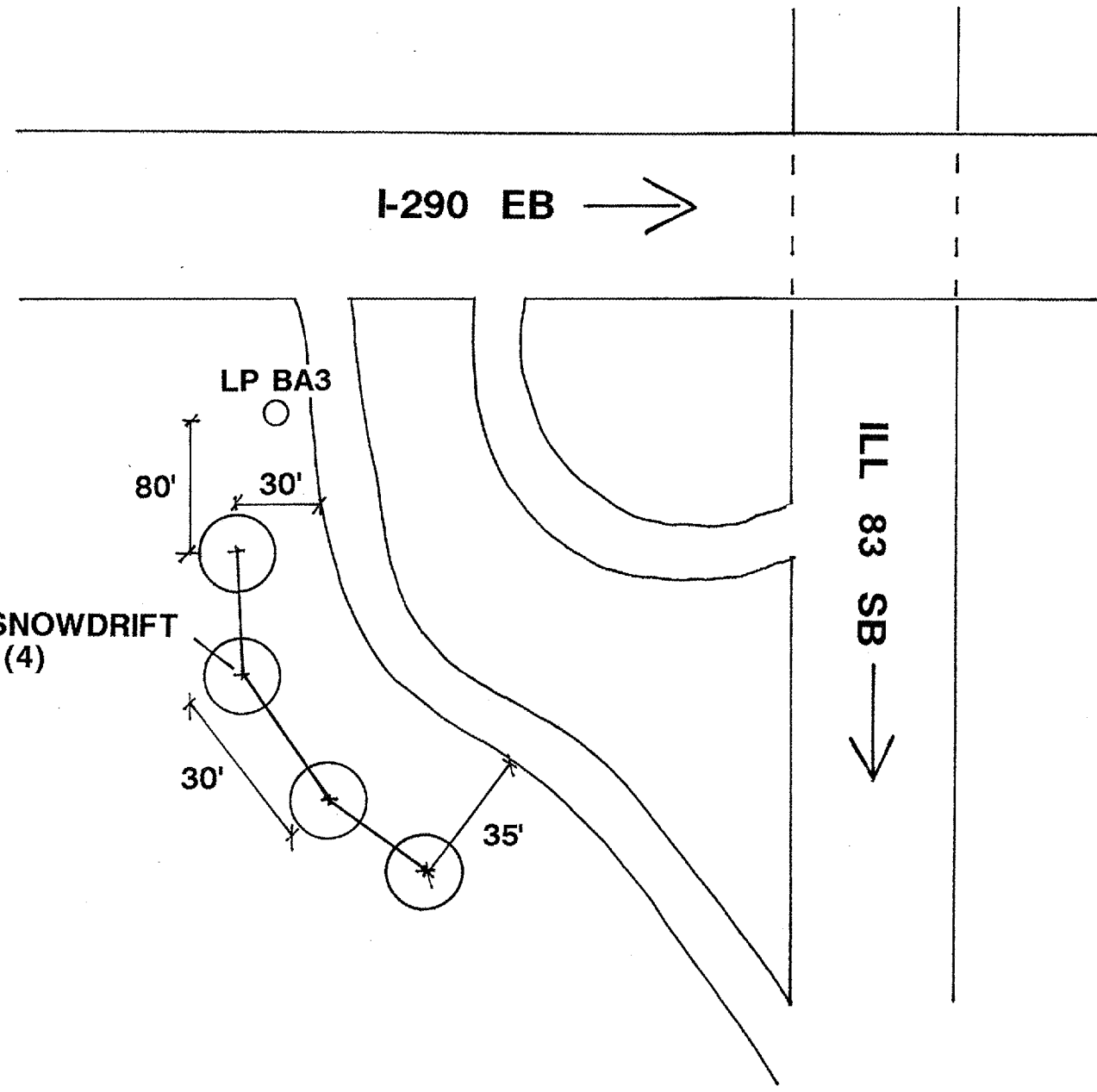
DESCRIPTION	QTY/UNIT
JUGLANS NIGRA (BLACK WALNUT)	3 EACH

ILLINOIS DEPARTMENT OF TRANSPORTATION

LANDSCAPE REPAIR LOCATION AND LAYOUT PLAN

ROUTE VARIOUS	SECTION 2005-021LS	COUNTY VARIOUS	TOTAL SHEETS 25	SHEET NUMBER 19
------------------	-----------------------	-------------------	-----------------------	-----------------------

CONTRACT 62950



GENERAL LOCATION MAP

COUNTY: DUPAGE
CLAIM #: 712838

CITY/TOWN: ADDISON
713476

**PROPOSED SNOWDRIFT
CRABAPPLE (4)**

SCHEDULE OF LANDSCAPE ITEMS
DESCRIPTION QTY/UNIT

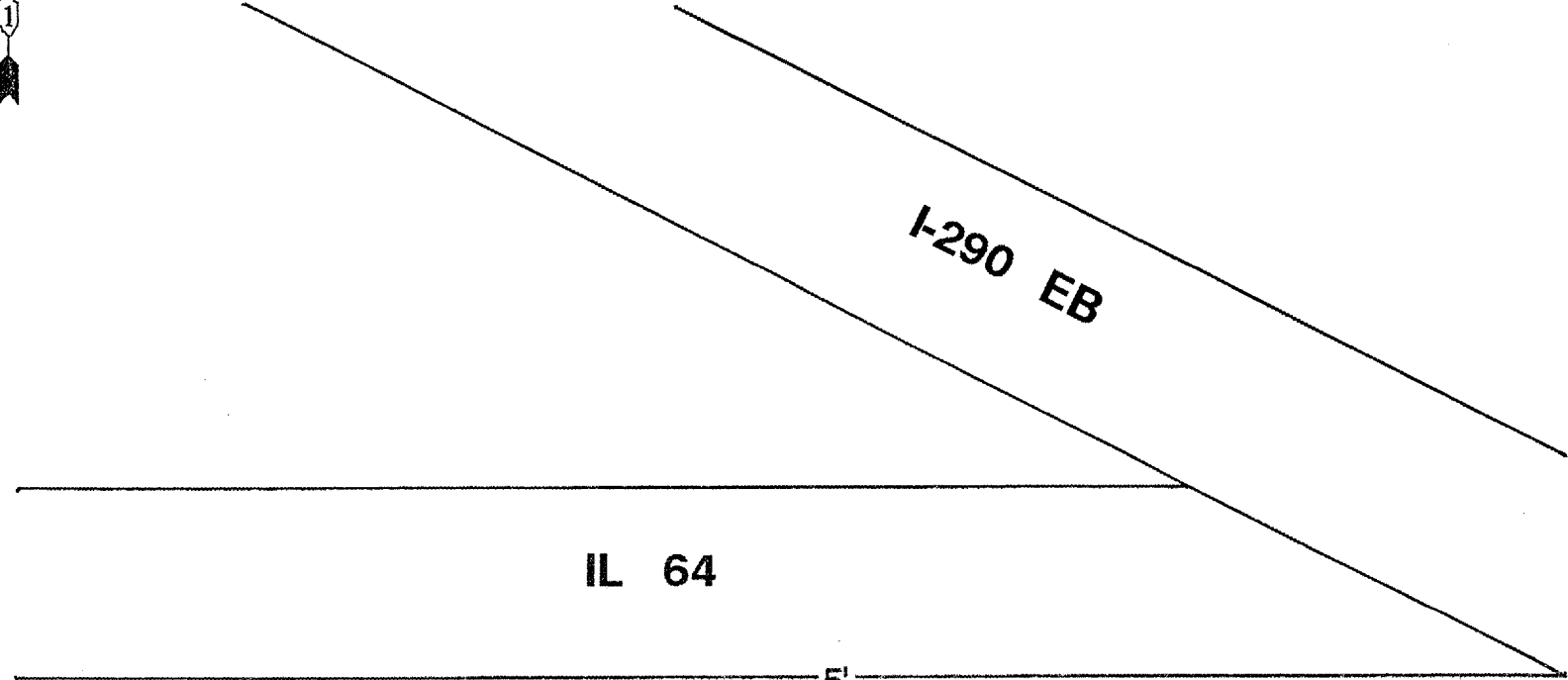
MALUS 'SNOWDRIFT' (SNOWDRIFT CRABAPPLE)	4 EACH
--	--------

ILLINOIS DEPARTMENT OF TRANSPORTATION

LANDSCAPE REPAIR LOCATION AND
LAYOUT PLAN

ROUTE	SECTION	COUNTY	TOTAL SHEETS	SHEET NUMBER
VARIOUS	2005-021LS	VARIOUS	25	20

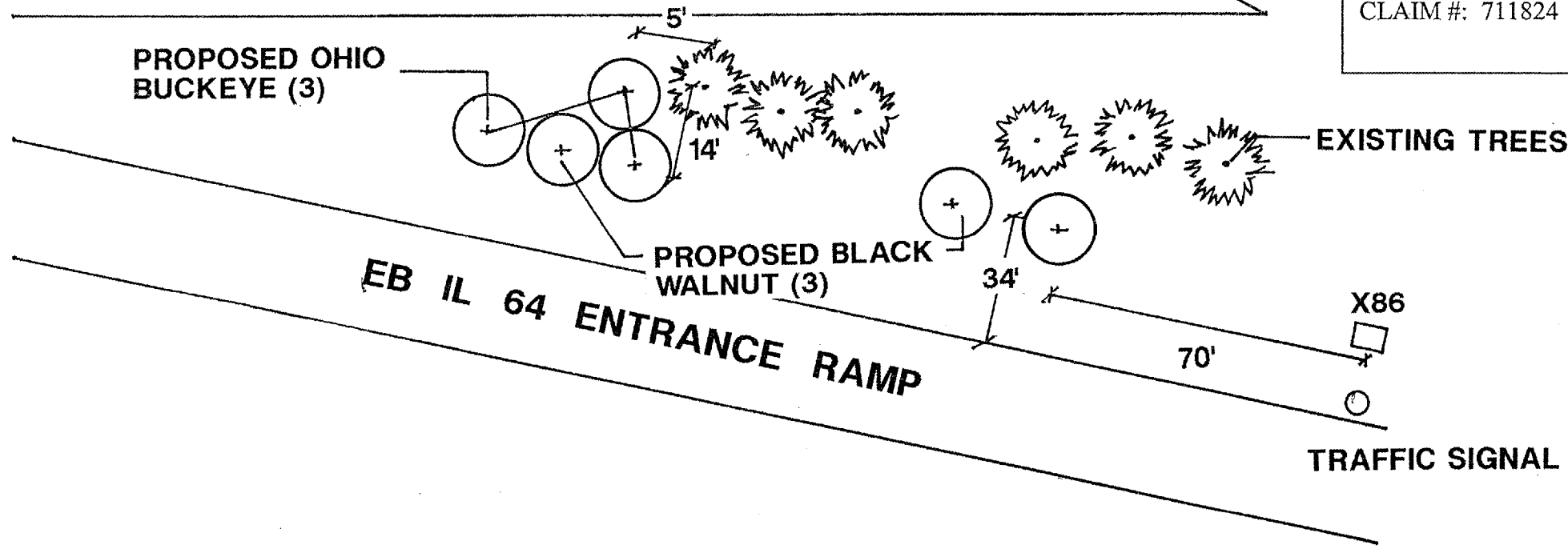
CONTRACT 62950



GENERAL LOCATION MAP

COUNTY: DUPAGE
CLAIM #: 711824 713071

CITY/TOWN: YORK



SCHEDULE OF LANDSCAPE ITEMS

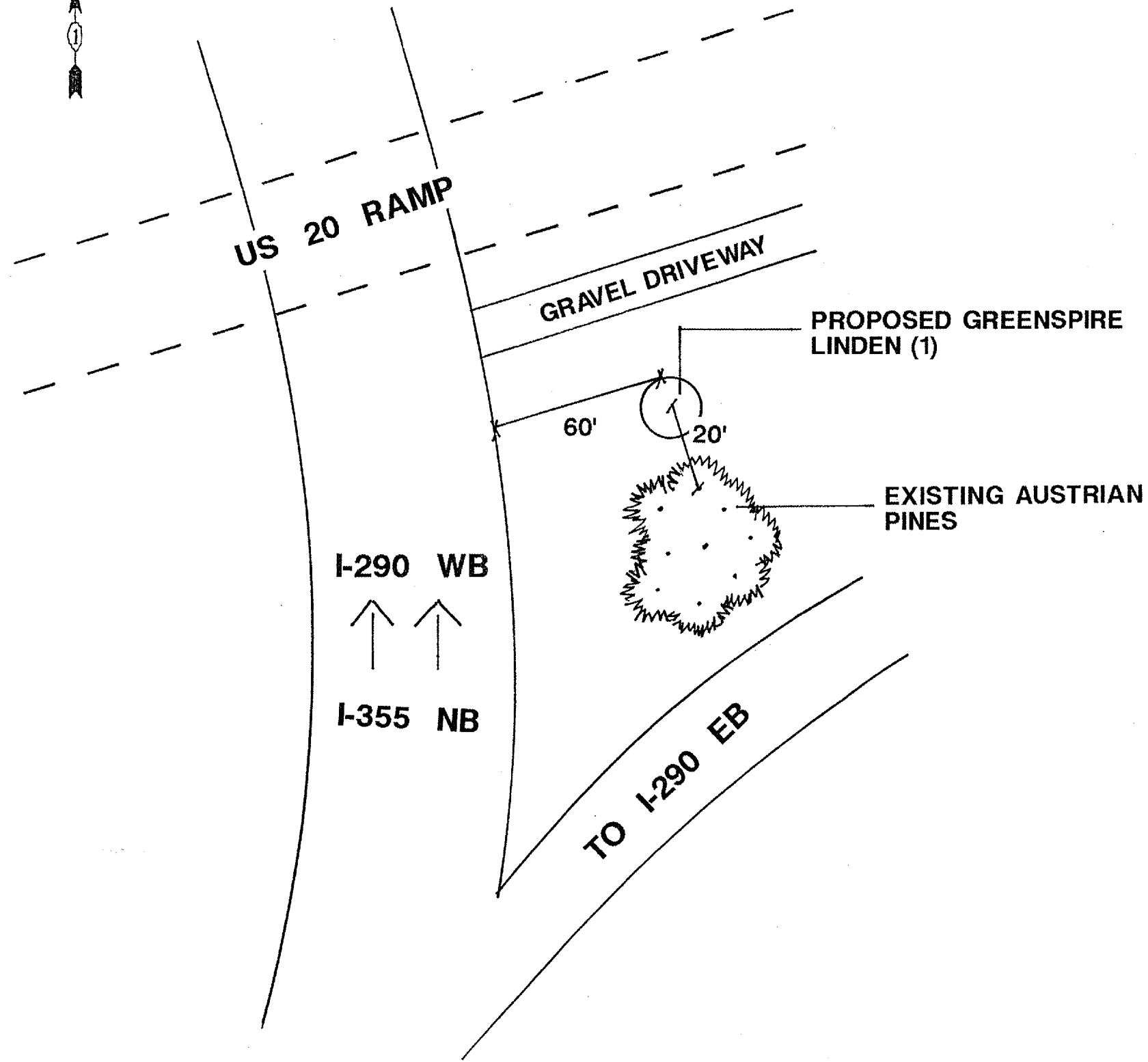
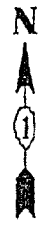
DESCRIPTION	QTY/UNIT
AESCULUS GLABRA (OHIO BUCKEYE)	3 EACH
JUGLANS NIGRA (BLACK WALNUT)	3 EACH

PLANT TREES 20' O.C.

ILLINOIS DEPARTMENT OF TRANSPORTATION
LANDSCAPE REPAIR LOCATION AND
LAYOUT PLAN

ROUTE	SECTION	COUNTY	TOTAL SHEETS	SHEET NUMBER
VARIOUS	2005-021LS	VARIOUS	25	21

CONTRACT 62950



GENERAL LOCATION MAP

COUNTY: DUPAGE
CLAIM #: 712835

CITY/TOWN: BLOOMINGDALE

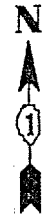
SCHEDULE OF LANDSCAPE ITEMS
DESCRIPTION QTY/UNIT

TILIA CORDATA 'GREENSPIRE' (GREENSPIRE LITTLE LEAF LINDEN)	1 EACH
---	--------

ILLINOIS DEPARTMENT OF TRANSPORTATION
LANDSCAPE REPAIR LOCATION AND
LAYOUT PLAN

ROUTE	SECTION	COUNTY	TOTAL SHEETS	SHEET NUMBER
VARIOUS	2005-021LS	VARIOUS	25	22

CONTRACT 62950



SPEED LIMIT SIGN



ILL 171 NB

35'

10'

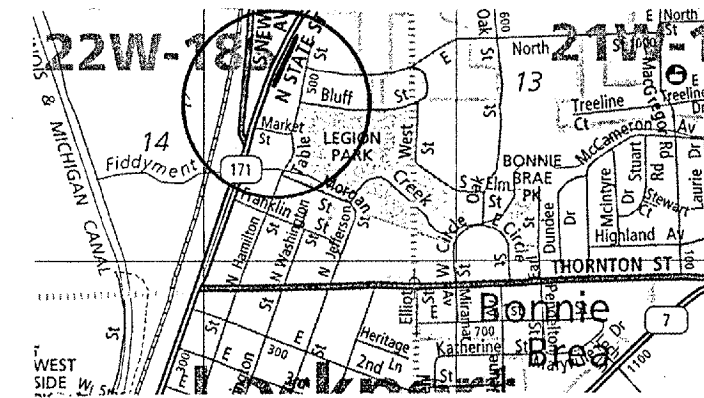
14909

EXISTING ASH

PROPOSED IVORY SILK
JAP. TREE LILAC (3)

PLANT TREES 15' O.C., STAGGERED

GENERAL LOCATION MAP



COUNTY: WILL
CLAIM #: 713069

CITY/TOWN: HOMER GLEN

SCHEDULE OF LANDSCAPE ITEMS
DESCRIPTION QTY/UNIT

SYRINGA RETICULATA 'IVORY SILK'
(IVORY SILK JAPANESE TREE LILAC) 3 EACH

ILLINOIS DEPARTMENT OF TRANSPORTATION

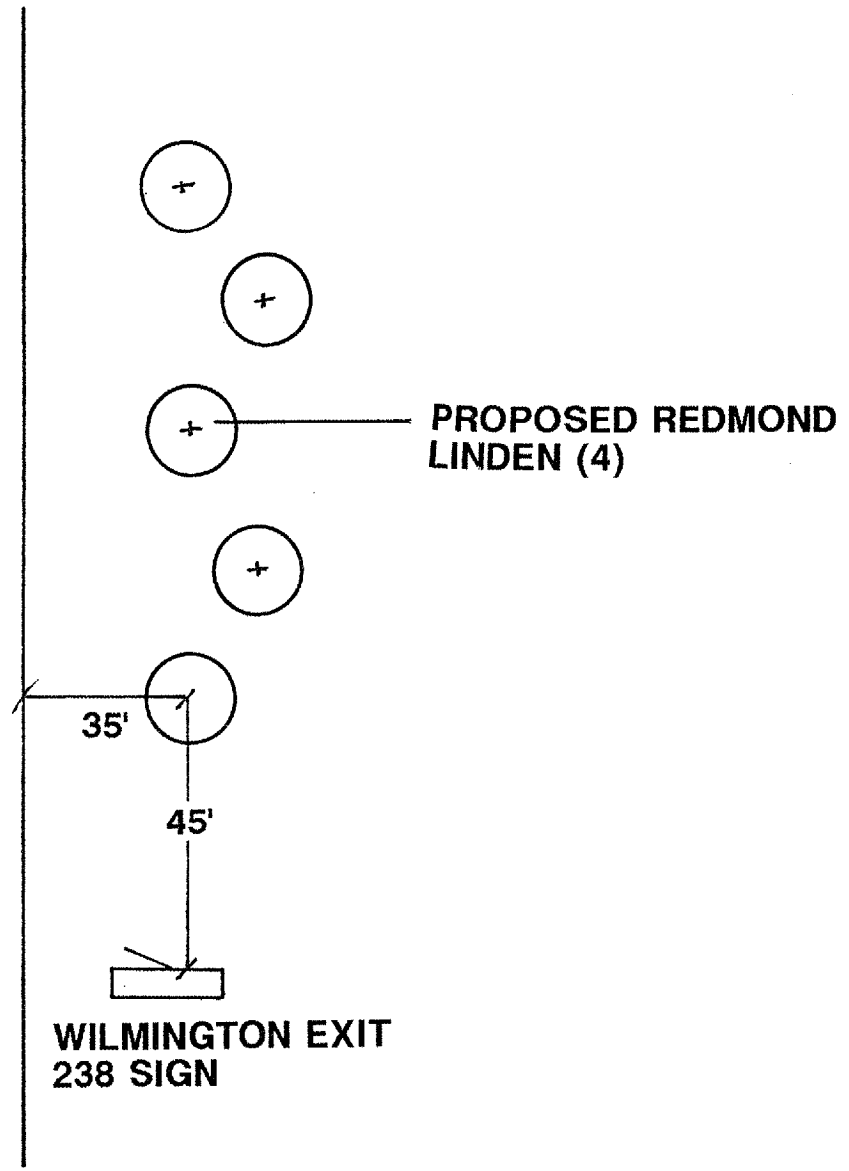
LANDSCAPE REPAIR LOCATION AND
LAYOUT PLAN

ROUTE	SECTION	COUNTY	TOTAL SHEETS	SHEET NUMBER
VARIOUS	2005-021LS	VARIOUS	25	23

CONTRACT 62950



I-55 NB
↑



I-55 NB 2.5 MI N/O ILL 113

GENERAL LOCATION MAP

COUNTY: WILL. CITY/TOWN: WILMINGTON
CLAIM #: 712045 712053

SCHEDULE OF LANDSCAPE ITEMS

DESCRIPTION	QTY/UNIT
TILIA AMERICANA 'REDMOND' (REDMOND AMERICAN LINDEN)	4 EACH

ILLINOIS DEPARTMENT OF TRANSPORTATION

LANDSCAPE REPAIR LOCATION AND
LAYOUT PLAN

ROUTE	SECTION	COUNTY	TOTAL SHEETS	SHEET NUMBER
VARIOUS	2005-021LS	VARIOUS	25	24

CONTRACT 62950

GENERAL LOCATION MAP

COUNTY: VARIOUS
CLAIM #: N/A

CITY/TOWN: VARIOUS

SCHEDULE OF LANDSCAPE ITEMS

DESCRIPTION	QTY/UNIT
AESCLUSUS GLABRA OHIO BUCKEYE	5 EACH
GLEDITSIA TRIACANTHOS VAR. INERMIS 'HALKA' HALKA HONEYLOCUST	10 EACH
GYMNOCLADUS DIOICUS KENTUCKY COFFEETREE	10 EACH
MALUS 'SNOWDRIFT' SNOWDRIFT CRABAPPLE	10 EACH
SYRINGA RETICULATA 'IVORY SILK' IVORY SILK JAPANESE TREE LILAC	10 EACH
TILIA CORDATA 'GREENSPIRE' GREENSPIRE LITTLELEAF LINDEN	5 EACH
PERENNIAL PLANTS, DAFFODIL PLANTS <i>Narcissus 'Ceylon'</i> , (Ceylon Daffodil)	16 UNITS

LOCATIONS WILL BE DETERMINED BY THE ENGINEER.

ILLINOIS DEPARTMENT OF TRANSPORTATION

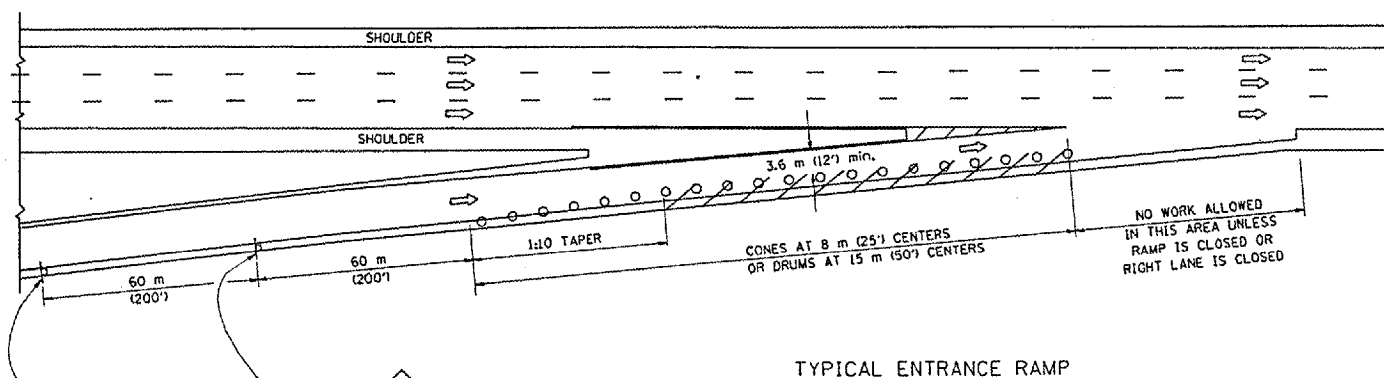
LANDSCAPE REPAIR LOCATION AND
LAYOUT PLAN

PARTIAL RAMP CLOSURE DETAILS

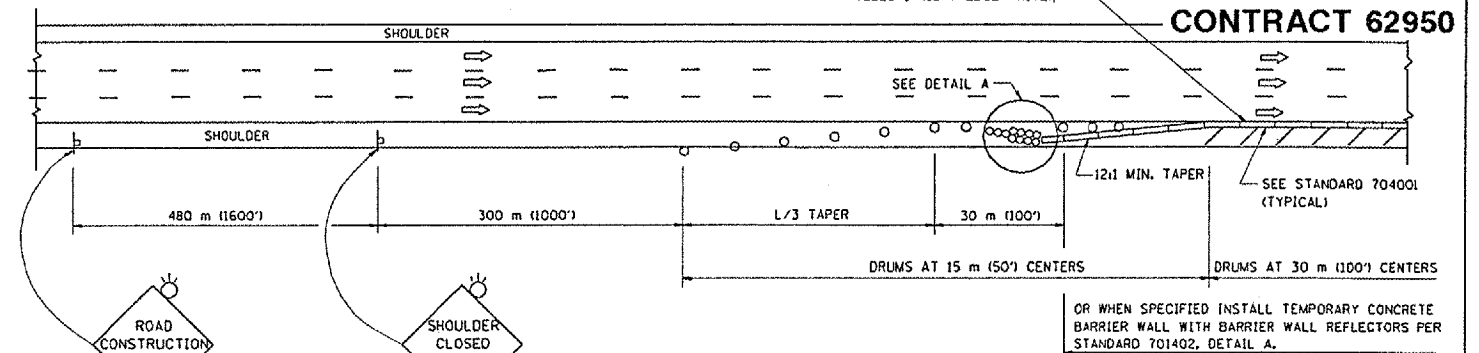
SHOULDER CLOSURE DETAILS

F.A. R.T.E.	SECTION	COUNTY	TOTAL SHEETS	SHEET NO.
2005-0215	VARIOUS		25	25
STA.	TO STA.			
FED. ROAD DIST. NO.	ILLINOIS	FED. AID PROJECT		

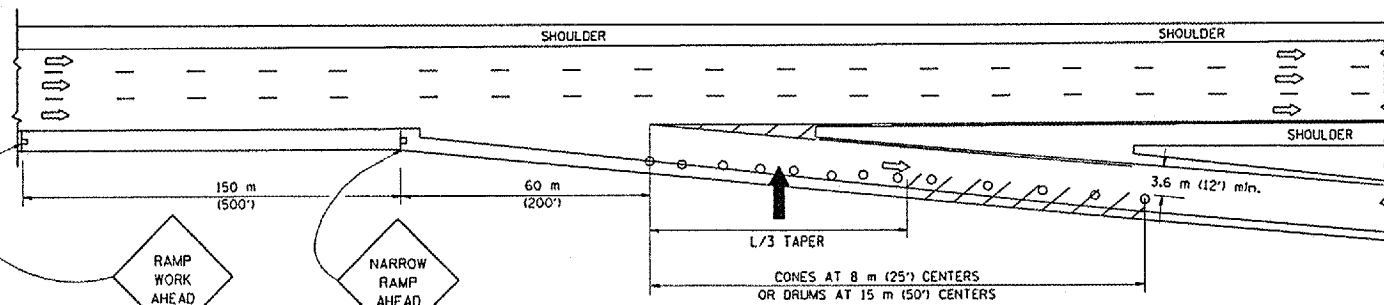
CONTRACT 62950



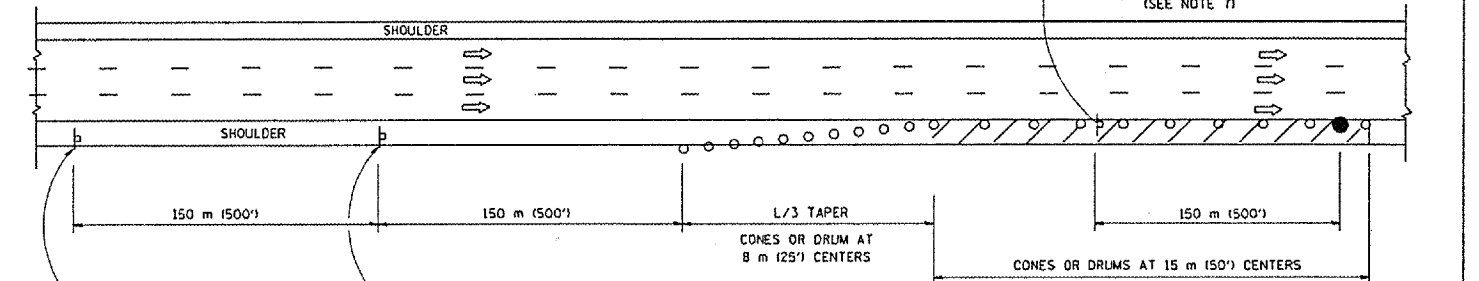
TYPICAL ENTRANCE RAMP



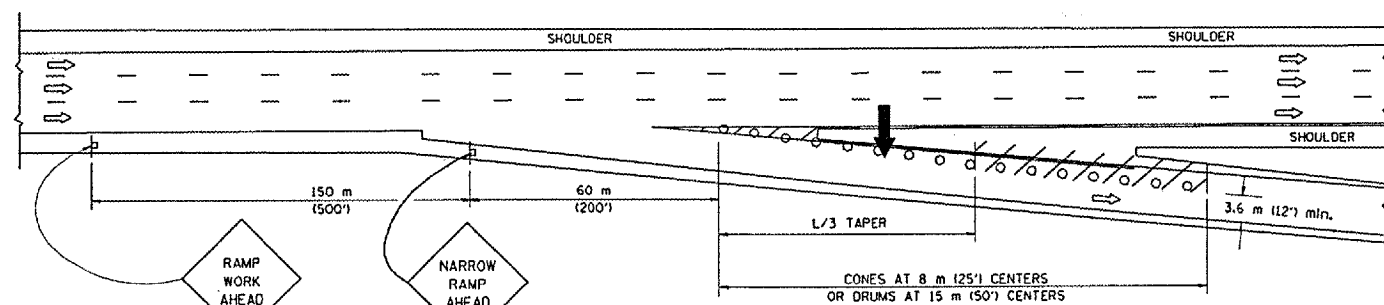
PERMANENT SHOULDER CLOSURE



TYPICAL EXIT RAMP



DAYTIME SHOULDER CLOSURE



TYPICAL EXIT RAMP

THIS DETAIL IS USED WHERE:
 1. VEHICLES, EQUIPMENT, WORKERS OR THEIR ACTIVITIES ENCRANCH IN AN AREA CLOSER THAN 4.5 m (15') TO THE EDGE OF PAVEMENT FOR A PERIOD IN EXCESS OF 15 MINUTES.

SYMBOLS

- ARROWBOARD
- WORK AREA
- SIGN ON PORTABLE OR PERMANENT SUPPORT
- FLAGGER WITH CONTROL SIGN
- DRUM WITH MONO-DIRECTIONAL STEADY BURNING LIGHT
- CONES - 700 (28) IN HEIGHT

GENERAL NOTES

1. THE "L" DISTANCE EQUALS:
 SPEED LIMIT FORMULAS
 80 km/h (45 mph) METRIC ENGLISH
 OR GREATER: $L = 0.65(W)(S)$ $L = (W)(S)$
 W = WIDTH OF OFFSET IN METERS (FEET)
 S = NORMAL POSTED SPEED KM/H (MPH)
2. PLASTIC DRUMS WITH HIGH PERFORMANCE REFLECTIVE SHEETING AND STEADY BURNING LIGHTS ARE REQUIRED FOR ALL NIGHTTIME CLOSURES.
3. ALL SIGNS SHALL BE POST MOUNTED IF THE CLOSURE TIME EXCEEDS FOUR DAYS.
4. FLASHING LIGHTS SHALL BE USED DURING THE HOURS OF DARKNESS AND SHALL BE INSTALLED ABOVE THE FIRST TWO SETS OF SIGNS.

5. THE IMPACT ATTENUATOR, TEMPORARY IS NOT REQUIRED WHEN THE TEMPORARY CONCRETE BARRIER WALL IS OUTSIDE THE CLEAR ZONE OR IS TIED INTO THE EXISTING GUARDRAIL. IF OFFSET IS LESS THAN 5 FEET USE "TRAFFIC BARRIER TERMINAL, TYPE III, TEMPORARY" DEVICE TO MEET NCHRP350 FOR POSTED SPEED.
6. AUTHORIZATION FROM THE DISTRICT'S BUREAU OF TRAFFIC IS REQUIRED FOR ALL FREEWAY CLOSURES.
7. THE FLAGGER AND FLAGGER SIGN ARE REQUIRED AT THE ABOVE WORK SITES WHEN:
 - a. FOUR OR MORE WORK VEHICLES ENTER THE TRAFFIC LANES IN A ONE HOUR PERIOD.
 - b. THE WORK ACTIVITY REQUIRES FREQUENT ENCRANCHMENT INTO THE LANE OPEN TO TRAFFIC.
 THE FLAGGER SHALL BE STATIONED APPROXIMATELY 30 m (100') TO 60 m (200') IN ADVANCE OF THE WORKERS.

ARRAY DESIGN PER MANUFACTURER TO BE NCHRP 350 COMPLIANT FOR POSTED SPEED.

DETAIL "A"
 IMPACT ATTENUATOR, TEMPORARY
 (SEE NOTE 5)

ALL DIMENSIONS ARE IN MILLIMETERS (INCHES) UNLESS OTHERWISE SHOWN.
 ILLINOIS DEPARTMENT OF TRANSPORTATION

TRAFFIC CONTROL DETAILS FOR FREEWAY SHOULDER CLOSURES PARTIAL RAMP CLOSURES

REVISIONS	
NAME	DATE
DWS	11/96
JAF	12/02
NCHRP 350	04/03

SCALE: NONE
 DATE: 05/06/2003
 DRAWN BY: DWS
 DESIGNED BY: DWS
 CHECKED BY: DWS
 TC-17