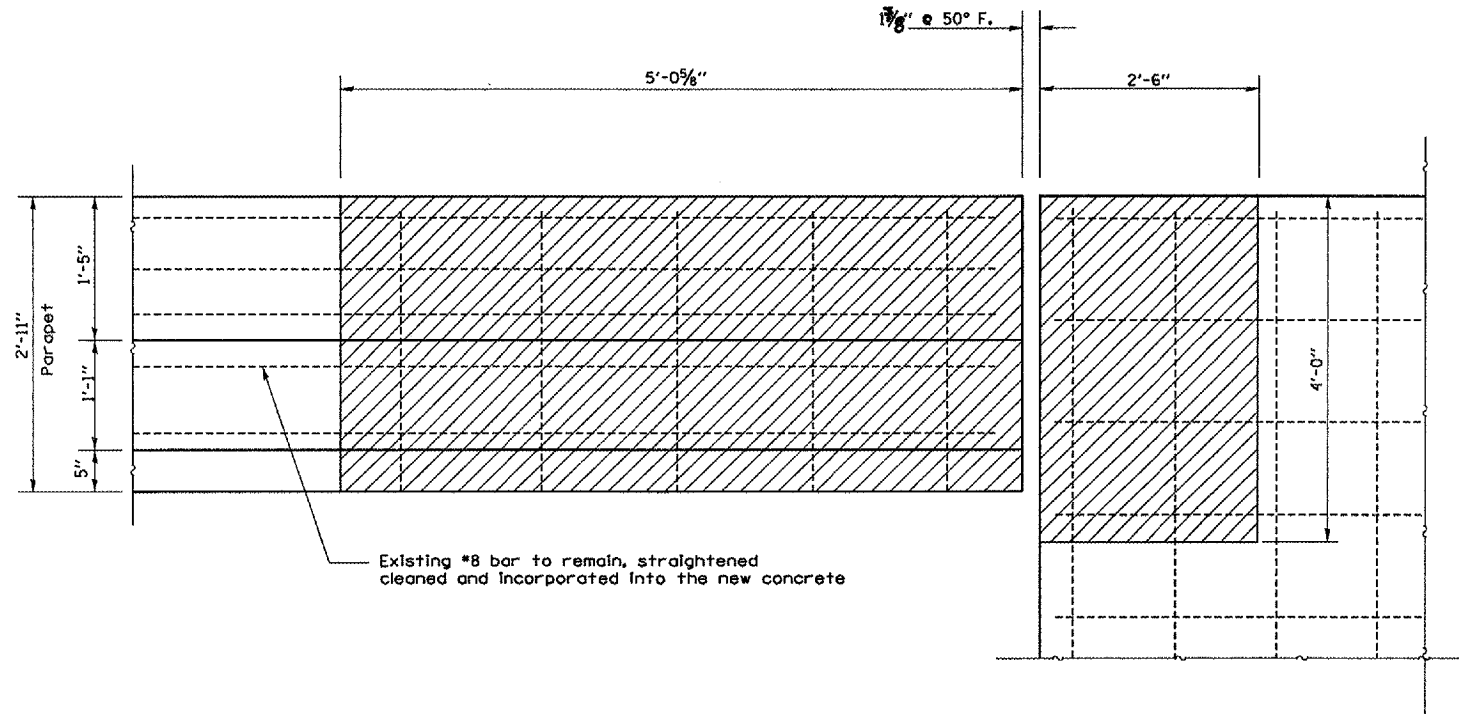
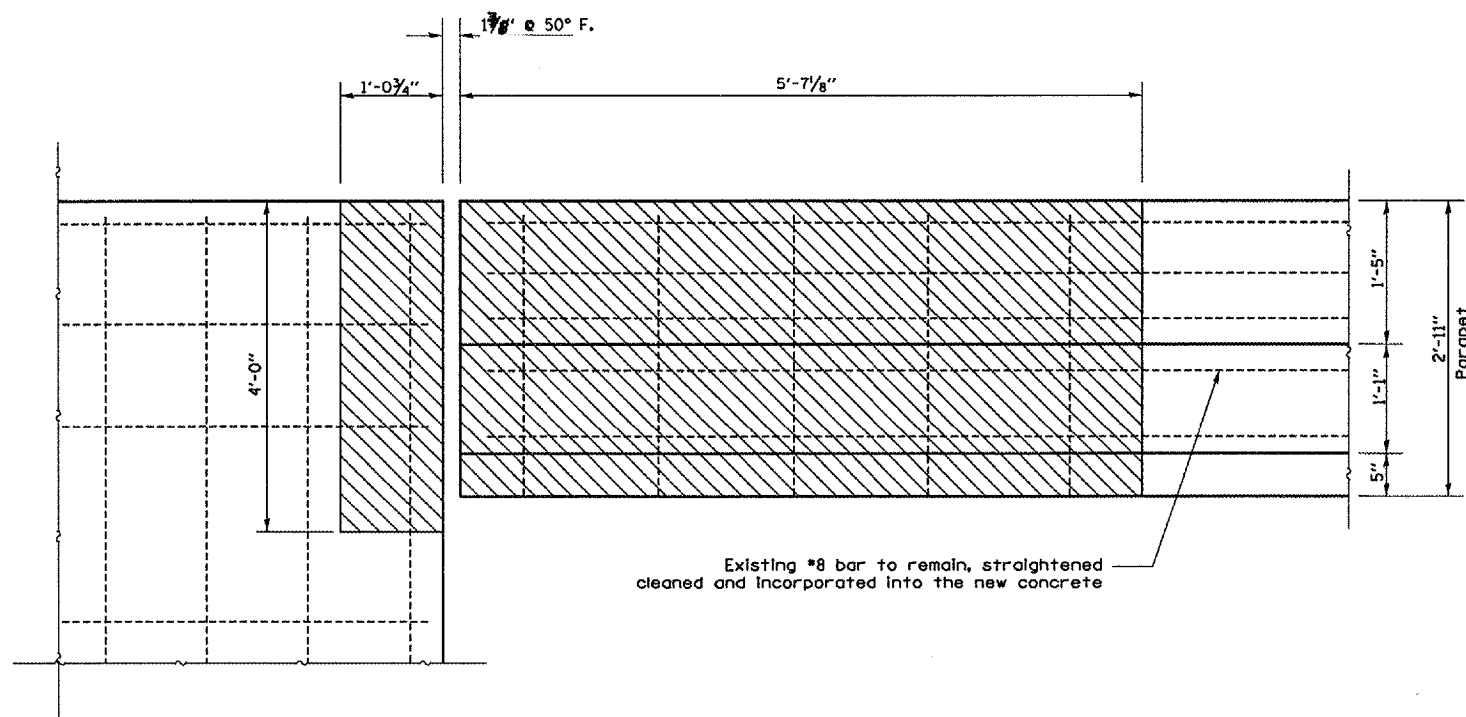


F.A.I. RTE.	SECTION	COUNTY	TOTAL SHEETS	SHEET NO.
412	(50-5B)I	LASALLE	29	7
FED. ROAD DIST. NO. ILLINOIS		STATE AID PROJECT		

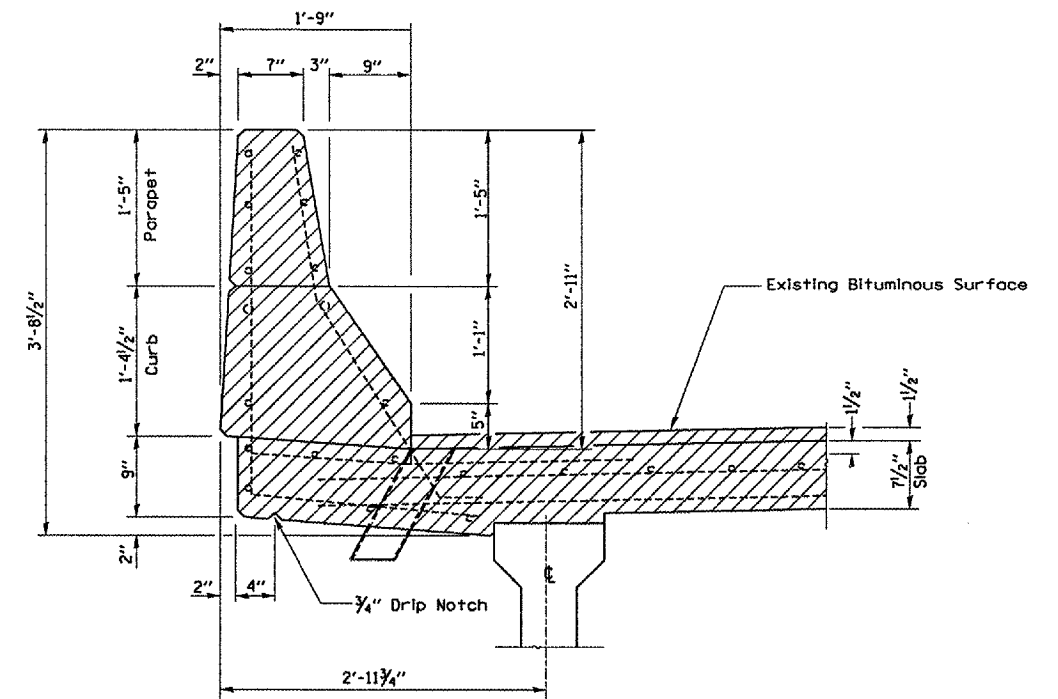


ELEVATION AT WEST PARAPET

CONCRETE REMOVAL



ELEVATION AT EAST PARAPET



Minimum Bar Lap

- #4 1'-8"
- #5 2'-2"
- #6 2'-7"
- #7 3'-5"
- #8 4'-6"

SECTION B-B
@ Rt <'s

REVISIONS	
NAME	DATE

ILLINOIS DEPARTMENT OF TRANSPORTATION
CONCRETE REMOVAL-NORTH ABUT. PARAPET DETAILS
 F.A.I. 412 SOUTHBOUND
 OVER C. & N.W. RAILROAD
 SECTION (50-5B)I
 STA. 1216 + 43.45
 DATE 04/24/2005
 DRAWN BY RW
 CHECKED BY

MARCH 24, 2005
C:\PROJECTS\CMA\IND6\CM302\DETAILS.DGN