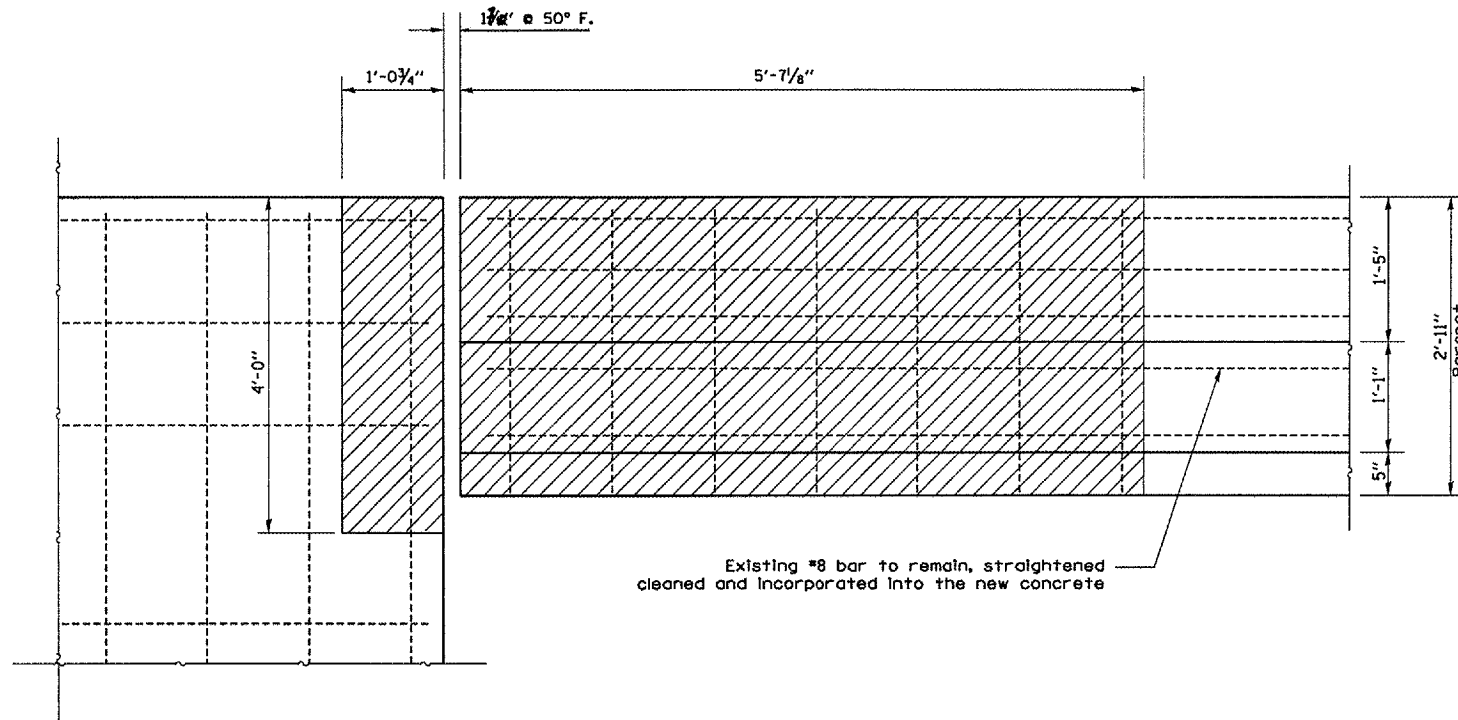
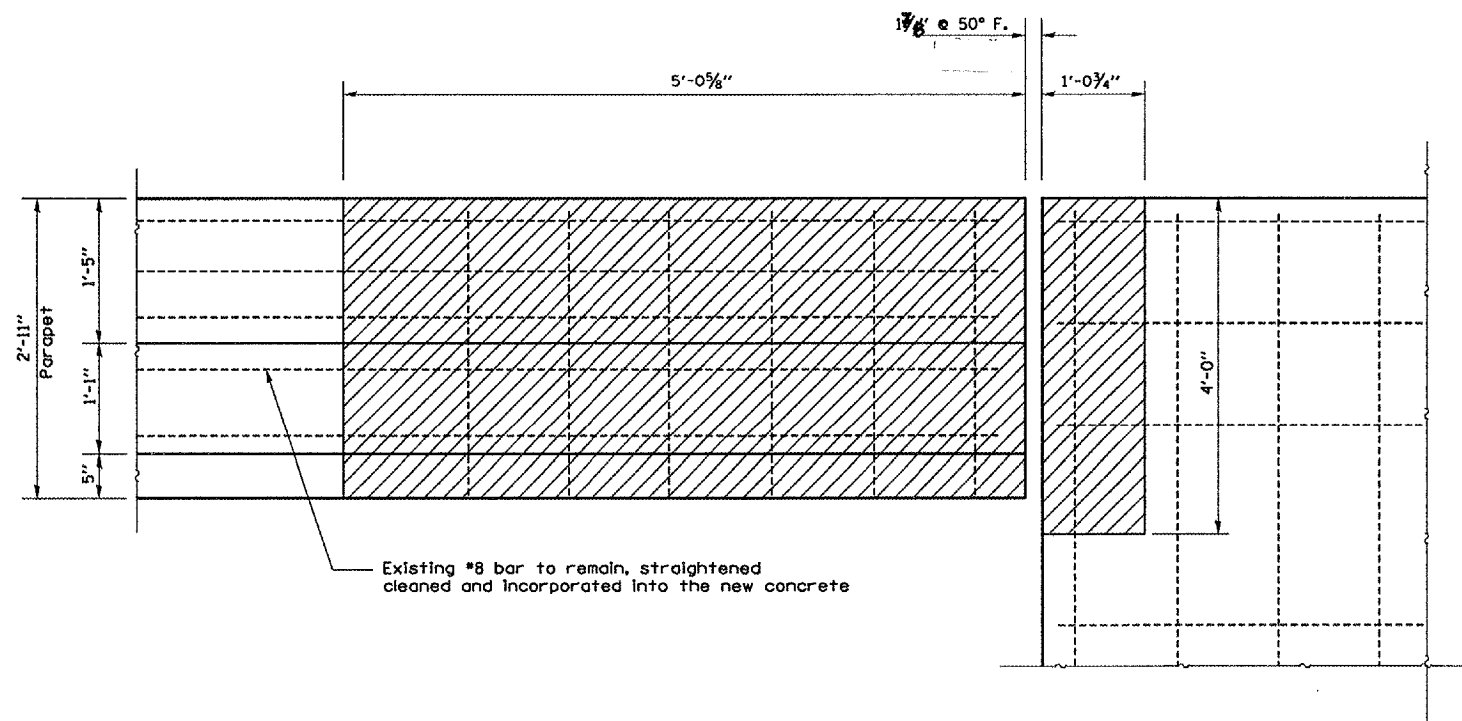


F.A.I. RTE.	SECTION	COUNTY	TOTAL SHEETS	SHEET NO.
412	(50-5B)I	LASALLE	29	9
FED. ROAD DIST. NO.		ILLINOIS	STATE AID PROJECT	

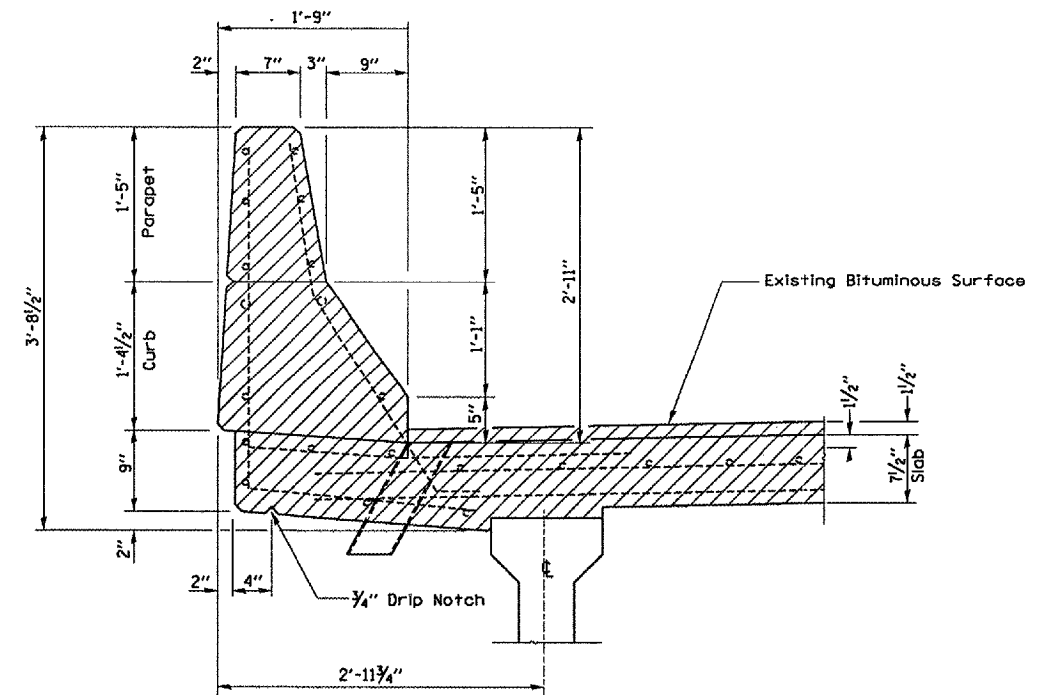


ELEVATION AT WEST PARAPET

CONCRETE REMOVAL



ELEVATION AT EAST PARAPET



Minimum Bar Lap

- #4 1'-8"
- #5 2'-2"
- #6 2'-7"
- #7 3'-5"
- #8 4'-6"

SECTION B-B

@ Rt <'s

REVISIONS	
NAME	DATE

ILLINOIS DEPARTMENT OF TRANSPORTATION
CONCRETE REMOVAL-SOUTH ABUT.
PARAPET DETAILS
 F.A.I. 412 SOUTHBOUND
 OVER C. & N.W. RAILROAD
 SECTION (50-5B)I
 STA. 1216 + 43.45
 DATE 04/24/2005
 DRAWN BY RW
 CHECKED BY

MARCH 24, 2005
 C:\PROJECTS\CMA\106\CM302\DETAILS.DGN