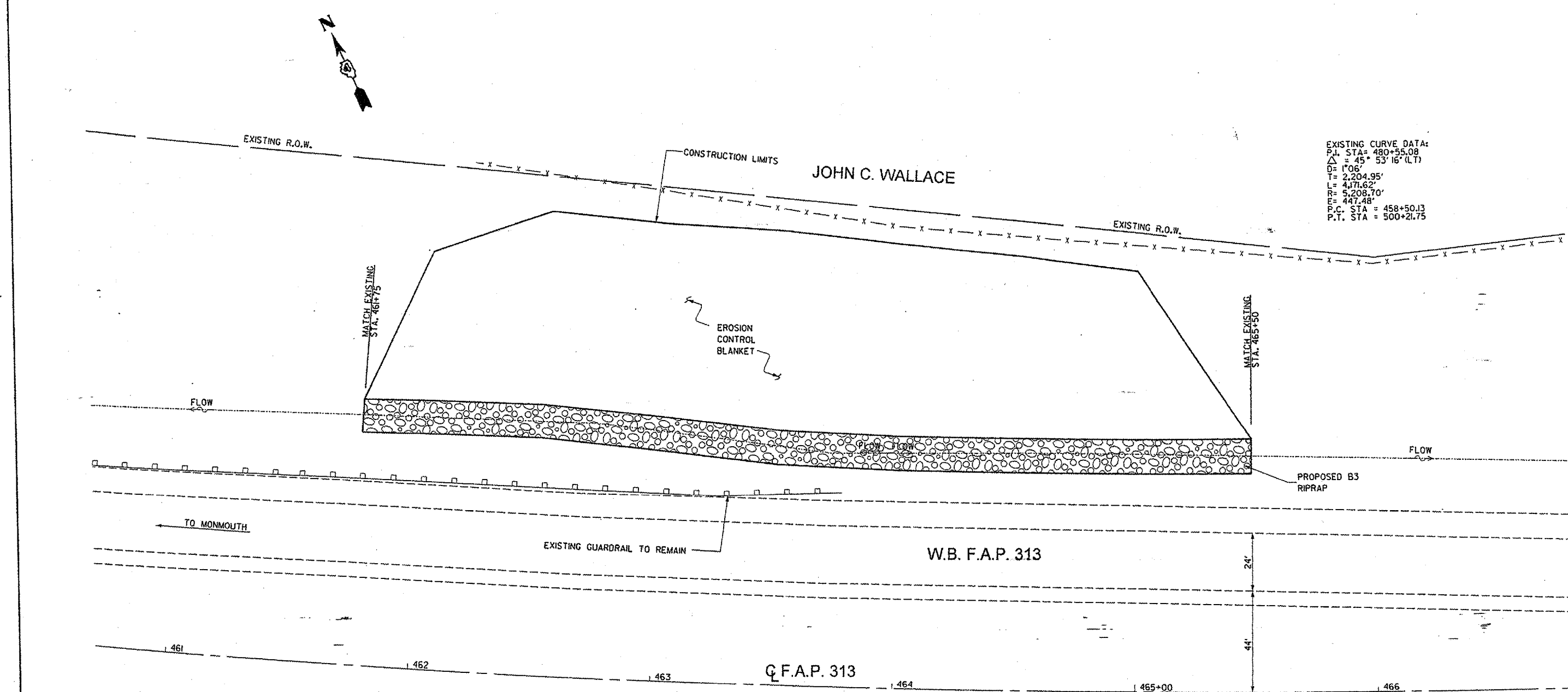


F.A. RTE.	SECTION	COUNTY	TOTAL SHEETS	SHEET NO.
313		WARREN	26	5
STA. 461+75		TO STA. 579+20		
FED. ROAD DIST. NO.		ILLINOIS	FED. AID PROJECT	

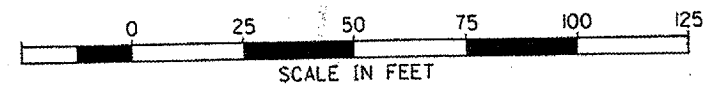
D4 SLIDE REPAIR 2006

EXISTING CURVE DATA:
 P.I. STA = 480+55.08
 $\Delta = 45^\circ 53' 16" (LT)$
 D = 1°06'
 T = 2,204.95'
 L = 4,171.62'
 R = 5,208.70'
 E = 447.48'
 P.C. STA = 458+50.13
 P.T. STA = 500+21.75



LEGEND

- EXISTING DITCH
- x - x - EXISTING FENCELINE



ILLINOIS DEPARTMENT OF TRANSPORTATION

**PLAN OF PROPOSED IMPROVEMENTS
 STA. 461+75 TO STA. 465+50**

SCALE: AS SHOWN
 DATE: 11/3/2004

DRAWN BY: BALSER
 DESIGNED BY: PETERSON
 CHECKED BY: