

68345

F.A.P. RTE.	SECTION	COUNTY	TOTAL SHEETS	SHEET NO.
313	D4 SLIDE REPAIR 2006	WARREN	26	1

PROJECT ENGINEER: M. ADDIS (309) 671-3454

INDEX OF SHEETS

1. COVER SHEET
2. GENERAL NOTES AND COMMITMENTS
3. SUMMARY OF QUANTITIES
4. SCHEDULE OF QUANTITIES
- 5-6. PLAN SHEETS
- 7-26. CROSS SECTIONS

LIST OF STANDARDS

- 701101-01
- 701106-01
- 701400-02
- 701406-04
- 701411-03
- 702001-05

THIN, RIW OF THE 4TH P.M. SECTIONS 19 AND 21 OF COLDBROOK TOWNSHIP, WARREN COUNTY.

DESIGN DESIGNATION

- ADT = 8800
- MU = 1100
- SU = 320

SCALES

SEE INDIVIDUAL SHEETS

ENGINEERING SCALES, REDUCED SIZED PLANS WILL NOT CONFORM TO STANDARD SCALES, IN MAKING MEASUREMENTS ON REDUCED PLANS, THE ABOVE SCALES MAY BE USED.

J.U.L.I.E.
JOINT UTILITY LOCATION INFORMATION FOR EXCAVATION
1-800-892-0123

CONTRACT NO. 68345
CATALOG NO. 032731-00D

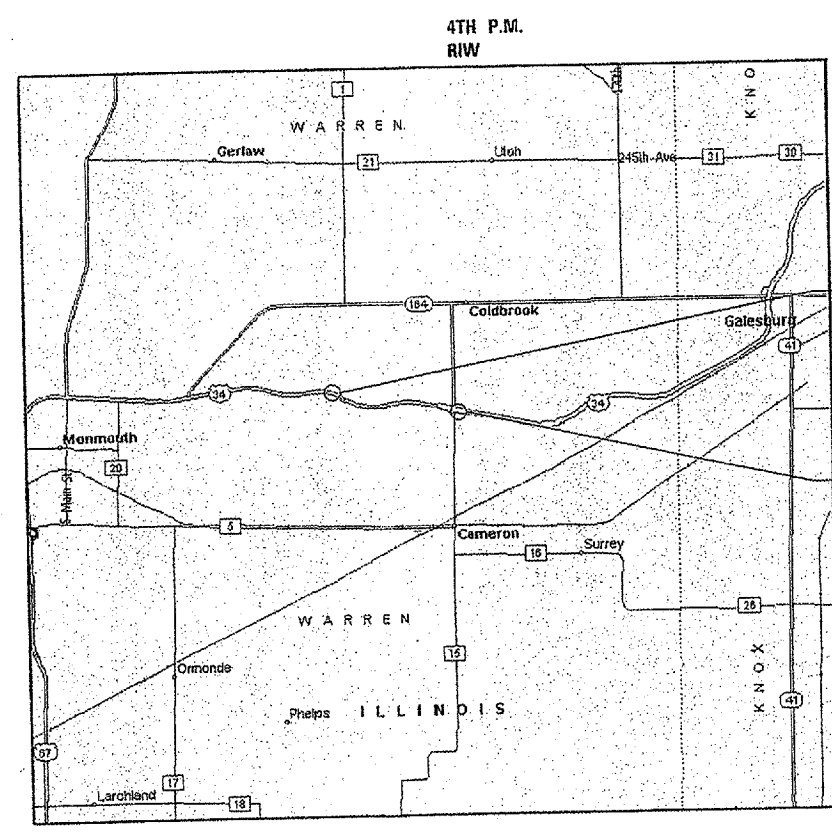
LAISON ENGINEER: E. ELDERZI (309) 671-3459

STATE OF ILLINOIS
DEPARTMENT OF TRANSPORTATION
DIVISION OF HIGHWAYS

PROPOSED HIGHWAY PLANS

F.A.P. ROUTE 313 (U.S. ROUTE 34)
SECTION: D4 SLIDE REPAIR 2006
WARREN COUNTY
C-94-041-03

DESCRIPTION OF WORK: THIS PROJECT CONSISTS OF SIDE SLOPE EARTH REPAIRS AT TWO LOCATIONS. WORK INCLUDES EARTH EXCAVATION, ROCK FILL AND RIPRAP.

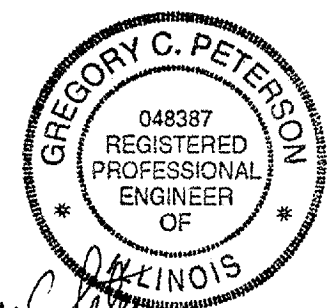


LOCATION MAP (NO SCALE)

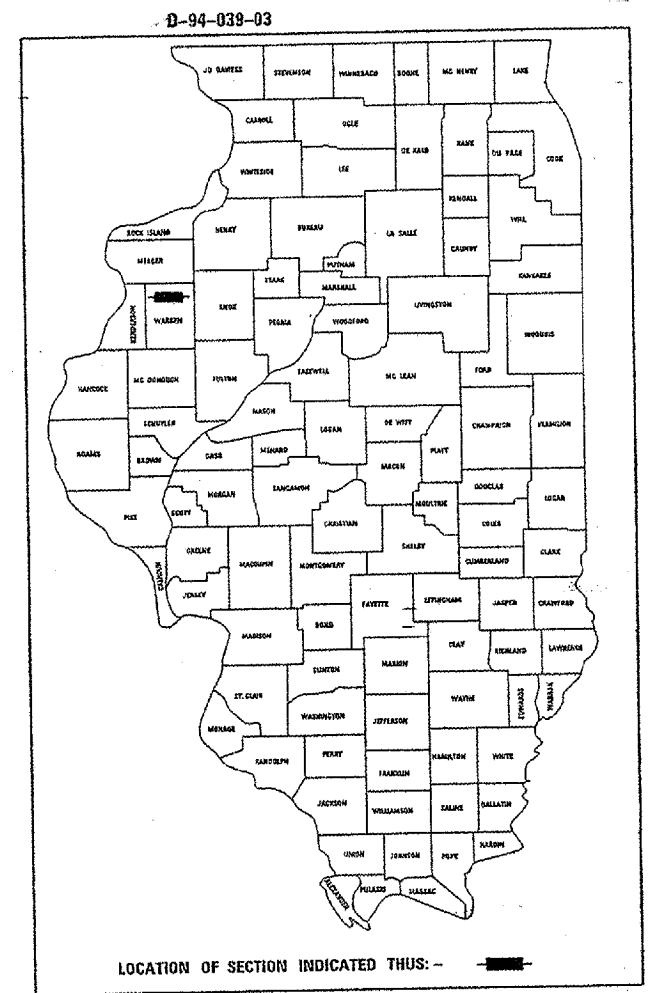
GROSS LENGTH OF IMPROVEMENT = 11,745.00 FEET = 2.22 MILES
NET LENGTH OF IMPROVEMENT = 970.00 FEET = 0.18 MILES

PROJECT LOCATION NO. 1
PROPOSED IMPROVEMENT BEGINS STA. 461+75.00 F.A.P. ROUTE 313
PROPOSED IMPROVEMENT ENDS STA. 465+50.00 F.A.P. ROUTE 313.

PROJECT LOCATION NO. 2
PROPOSED IMPROVEMENT BEGINS STA. 573+25.00 ALONG RAMP D OF THE CAMERON INTERCHANGE.
PROPOSED IMPROVEMENT ENDS STA. 579+20.00 ALONG RAMP D OF THE CAMERON INTERCHANGE.



Gregory C. Peterson
GREGORY C. PETERSON
ILLINOIS REGISTERED
PROFESSIONAL ENGINEER
NO. 048387
EXPIRES NOV. 30, 2005



STATE OF ILLINOIS
DEPARTMENT OF TRANSPORTATION
DIVISION OF HIGHWAYS

SUBMITTED: *MAY 20 05*

[Signature]
DEPUTY DIRECTOR OF HIGHWAYS, REGION ENGINEER

[Signature]
ENGINEER OF DESIGN AND ENVIRONMENT

[Signature]
DIRECTOR OF HIGHWAYS, CHIEF ENGINEER

PRINTED BY THE AUTHORITY OF THE STATE OF ILLINOIS

PLANS PREPARED BY
BRUNER, COOPER & ZUCK, INC
188 EAST SIMMONS STREET
GALESBURG, ILLINOIS 61402
PHONE: (309) 343-9282 FAX: (309) 343-5282

F.A.S. RTE.	SECTION	COUNTY	TOTAL SHEETS	SHEET NO.
313		WARREN	26	2
STA. 461+75		TO STA. 579+20		
FED. ROAD DIST. NO.		ILLINOIS	FED. AID PROJECT	
* D4 SLIDE REPAIR 2006				

GENERAL NOTES

ENVIRONMENTAL REVIEWS

PRIOR TO THE USE OF ANY BORROW AREAS, USE AREAS (TEMPORARY ACCESS ROADS, DETOURS, RUN-AROUNDS, ETC.) AND/OR WASTE AREAS, THE CONTRACTOR SHALL FILE THE REQUIRED ENVIRONMENTAL RESOURCE REQUEST SURVEYS ACCORDING TO SECTION 107.22 OF THE STANDARD SPECIFICATIONS. THESE SURVEYS ARE REQUIRED IN ORDER FOR THE DEPARTMENT TO CONDUCT CULTURAL AND BIOLOGICAL RESOURCE SURVEYS FOR THE PROPOSED SITE.

PRIOR TO ANY WASTE MATERIALS BEING REMOVED FROM THE CONSTRUCTION SITE THE REQUIRED ENVIRONMENTAL RESOURCES SURVEYS WILL NEED TO BE OBTAINED AND FILED BY THE CONTRACTOR. EXCESS WASTE PRODUCTS REMOVED FROM THE CONSTRUCTION SITE SHALL BE DISPOSED OF AS REQUIRED IN SECTION 202.03 OF THE STANDARD SPECIFICATIONS.

ANY PROTRUDING METAL BARS SHALL BE REMOVED PRIOR TO THE DISPOSAL OF BROKEN CONCRETE AT APPROVED DISPOSAL SITES.

THE REQUIRED ENVIRONMENTAL RESOURCE DOCUMENTATION SHALL INCLUDE THE FOLLOWING:

- * BDE FORM 2289.
- * A LOCATION MAP SHOWING THE SIZE LIMITS AND LOCATION OF THE USE AREA.
- * SIGNED PROPERTY OWNER AGREEMENT FORM.
- * COLOR PHOTOGRAPHS DEPICTING THE USE AREA.

PLEASE NOTE THAT A MINIMUM OF TWO WEEKS SHALL BE ALLOWED FOR THE DISTRICT TO OBTAIN THE REQUIRED ENVIRONMENTAL CLEARANCES.

COMMITMENTS

COMMITMENTS ARE NOT TO BE ALTERED WITHOUT THE WRITTEN APPROVAL OF ALL PARTIES TO WHICH THE COMMITMENT WAS MADE. NO COMMITMENTS HAVE BEEN MADE FOR THIS PROJECT.

REVISIONS	
NAME	DATE

ILLINOIS DEPARTMENT OF TRANSPORTATION

GENERAL NOTES AND COMMITMENTS

VERT. NONE
SCALE: HORIZ. NONE
DATE: 11/3/2004

DRAWN BY: BALSER
DESIGNED BY: PETERSON
CHECKED BY:

F.A.S. RTE.	SECTION	COUNTY	TOTAL SHEETS	SHEET NO.
313		WARREN	26	3
STA. 461+50		TO STA. 579+20		
FED. ROAD DIST. NO.		ILLINOIS	FED. AID PROJECT	
• 04 SLIDE REPAIR 2004				

SUMMARY OF QUANTITIES

SUMMARY OF QUANTITIES			CONSTRUCTION TYPE CODE	
CODE NO.	ITEM	UNITS	TOTAL QUANTITY	Y009 RURAL 100% STATE
20200100	EARTH EXCAVATION	CU YD	3,765	3,765
25000312	SEEDING, CLASS 4A	ACRE	0.7	0.7
25000400	NITROGEN FERTILIZER NUTRIENT	POUND	60	60
25000500	PHOSPHORUS FERTILIZER NUTRIENT	POUND	60	60
25000600	POTASSIUM FERTILIZER NUTRIENT	POUND	60	60
25100630	EROSION CONTROL BLANKET	SQ YD	3,194	3,194
28000300	TEMPORARY DITCH CHECKS	EACH	2.0	2.0
28100225	STONE RIPRAP, CLASS B3	TON	291	291
28200200	FILTER FABRIC	SQ YD	2,032	2,032
67100100	MOBILIZATION	L SUM	1	1
70100305	TRAFFIC CONTROL & PROTECTION STANDARD 701400	L SUM	1	1
70100420	TRAFFIC CONTROL & PROTECTION STANDARD 701411	EACH	1	1
70100700	TRAFFIC CONTROL & PROTECTION STANDARD 701406	L SUM	1	1
Z0054500	ROCK FILL	TON	725	725

REVISIONS	
NAME	DATE

ILLINOIS DEPARTMENT OF TRANSPORTATION

SUMMARY OF QUANTITIES

SCALE: NONE
DATE: 11/3/2004

DRAWN BY: BALSER
DESIGNED BY: PETERSON
CHECKED BY:

F.A.S. RTE.	SECTION	COUNTY	TOTAL SHEETS	SHEET NO.
313		WARREN	26	4
STA. 461+75		TO STA. 579+20		
FED. ROAD DIST. NO.	ILLINOIS	FED. AID PROJECT		
• 04 SLIDE REPAIR 2002				

SCHEDULE OF QUANTITIES

MOBILIZATION	
LOCATION	L. SUM
JOBSITE	1

EARTH EXCAVATION	
LOCATION	QTY. (CU YD)
LT. STA 461+75 TO STA. 465+50	2,963
RT. STA 573+25 TO STA. 579+20	802
TOTAL	3,765

SEEDING, CLASS 4A	
LOCATION	QTY. (ACRE)
LT. STA 461+75 TO STA 465+50	0.61
RT. STA 573+25 TO STA 579+20	0.05
TOTAL	0.66

NITROGEN FERTILIZER NUTRIENT	
LOCATION	QTY. (POUND)
LT. STA 461+75 TO STA 465+50	55
RT. STA 573+25 TO STA 579+20	5
TOTAL	60

PHOSPHORUS FERTILIZER NUTRIENT	
LOCATION	QTY. (POUND)
LT. STA 461+75 TO STA 465+50	55
RT. STA 573+25 TO STA 579+20	5
TOTAL	60

POTASSIUM FERTILIZER NUTRIENT	
LOCATION	QTY. (POUND)
LT. STA 461+75 TO STA 465+50	55
RT. STA 573+25 TO STA 579+20	5
TOTAL	60

STONE RIPRAP CLASS B3	
LOCATION	QTY. (TON)
LT. STA 461+75 TO STA 465+50	291
TOTAL	291

ROCK FILL	
LOCATION	QTY. (TON)
RT. STA 573+25 TO STA 579+20	725
TOTAL	725

EROSION CONTROL BLANKET	
LOCATION	QTY. (SQ YD)
LT. STA 461+75 TO STA 465+50	2,963
RT. STA 573+25 TO STA 579+20	231
TOTAL	3,194

FILTER FABRIC	
LOCATION	QTY. (SQ YD)
LT. STA 461+75 TO STA 465+50	582
RT. STA 573+25 TO STA 579+20	1,450
TOTAL	2,032

TRAFFIC CONTROL & PROTECTION STANDARD 701400	
LOCATION	QTY. (L. SUM)
JOB SITE	1

TEMPORARY DITCH CHECKS	
LOCATION	QTY. (EACH)
LT. STA 461+75	1.0
LT. STA 465+50	1.0
TOTAL	2.0

TRAFFIC CONTROL & PROTECTION STANDARD 701406	
LOCATION	QTY. (L. SUM)
JOBSITE	1

TRAFFIC CONTROL & PROTECTION STANDARD 701411	
LOCATION	QTY. (EACH)
ALONG RAMP D	1
TOTAL	1

REVISIONS	
NAME	DATE

ILLINOIS DEPARTMENT OF TRANSPORTATION

SCHEDULE OF QUANTITIES

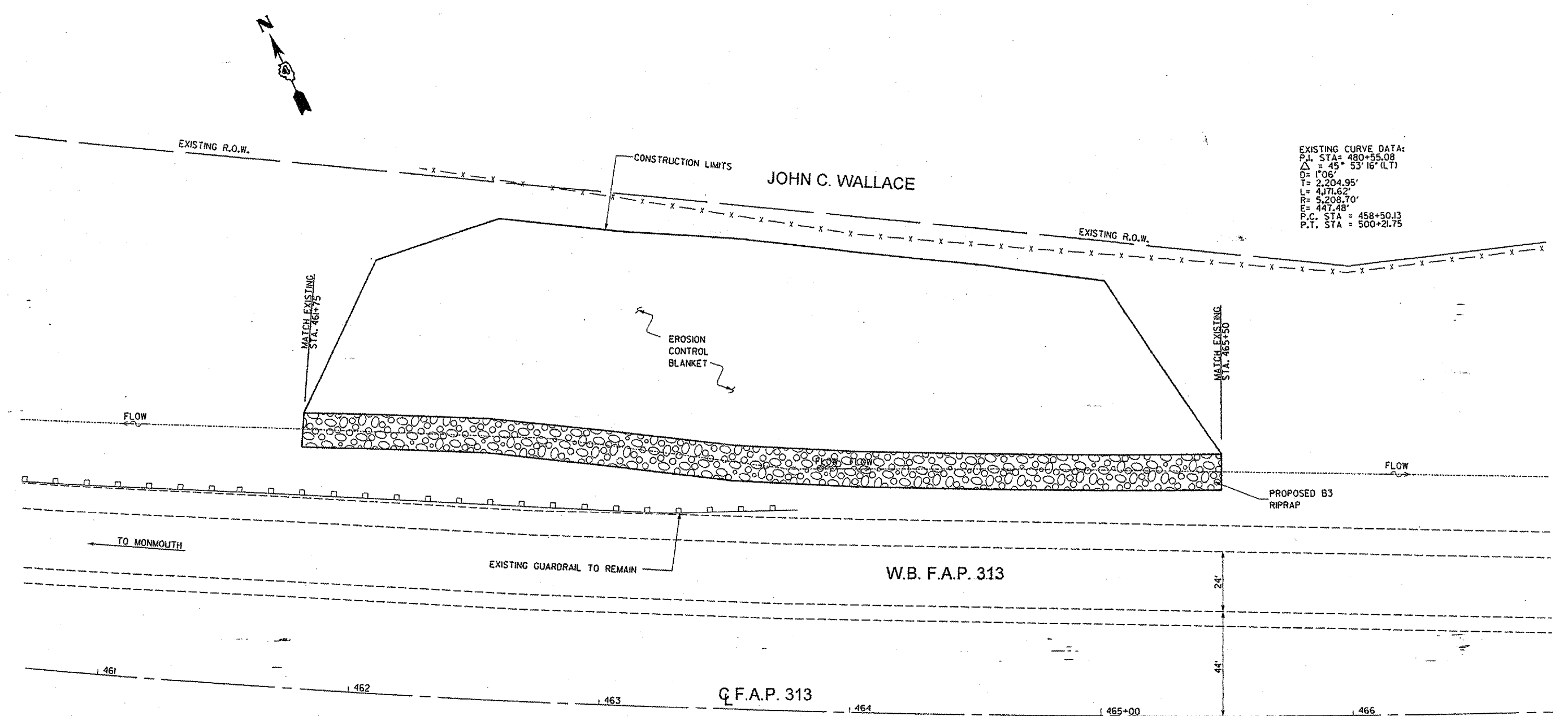
SCALE: NONE
DATE: 11/3/2004

DRAWN BY: BALSER
DESIGNED BY: PETERSON
CHECKED BY: _____

F.A. RTE.	SECTION	COUNTY	TOTAL SHEETS	SHEET NO.
313		WARREN	26	5
STA. 461+75		TO STA. 579+20		
FED. ROAD DIST. NO.		ILLINOIS	FED. AID PROJECT	

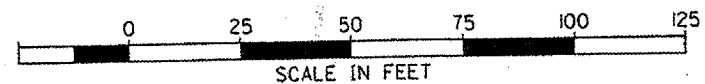
D4 SLIDE REPAIR 2006

EXISTING CURVE DATA:
 P.I. STA = 480+55.08
 $\Delta = 45^\circ 53' 16" (L.T.)$
 D = 1706'
 T = 2,204.95'
 L = 4,171.62'
 R = 5,208.70'
 E = 447.48'
 P.C. STA = 458+50.13
 P.T. STA = 500+21.75



LEGEND

- EXISTING DITCH
- x - x - EXISTING FENCELINE



ILLINOIS DEPARTMENT OF TRANSPORTATION

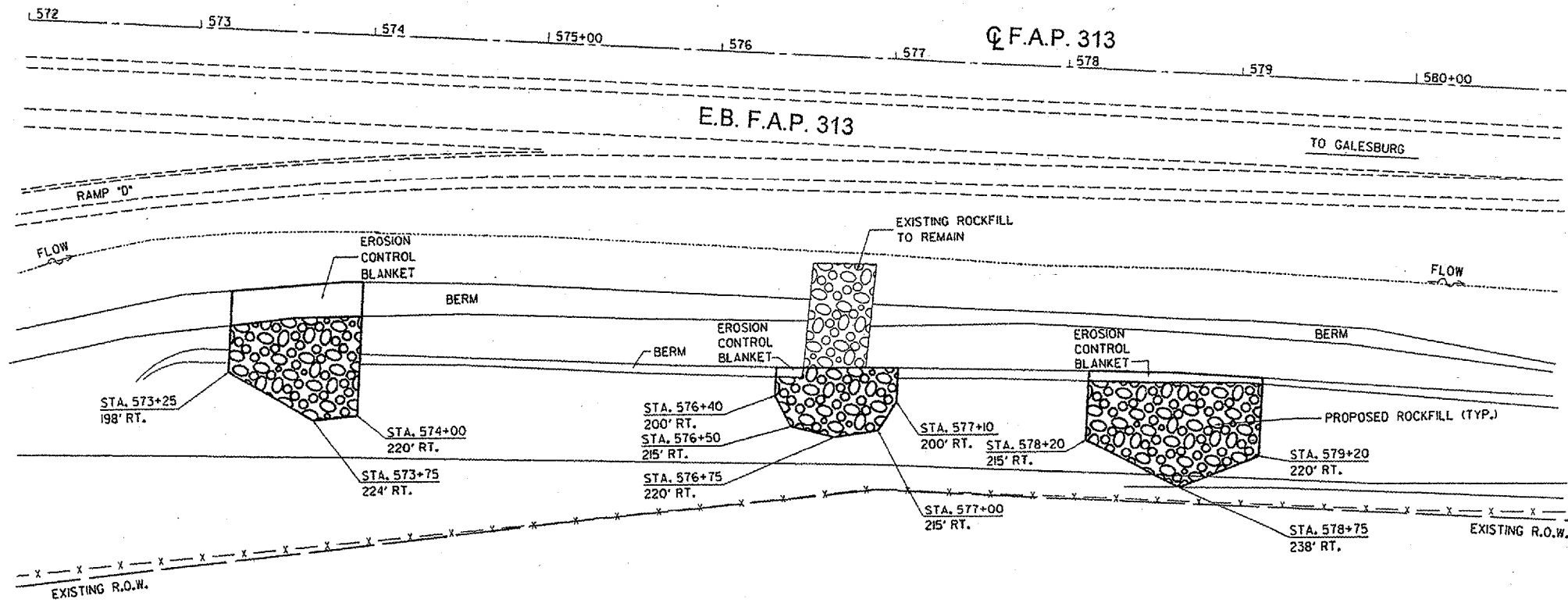
**PLAN OF PROPOSED IMPROVEMENTS
 STA. 461+75 TO STA. 465+50**

SCALE: AS SHOWN
 DATE: 11/3/2004

DRAWN BY: BALSER
 DESIGNED BY: PETERSON
 CHECKED BY:

F.A. RTE.	SECTION	COUNTY	TOTAL SHEETS	SHEET NO.
313		WARREN	26	6
STA. 46+75		TO STA. 579+20		
FED. ROAD DIST. NO.	ILLINOIS	FED. AID PROJECT		

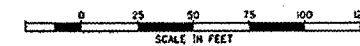
• D4 SLIDE REPAIR 2006



ILLINOIS DEPARTMENT OF NATURAL RESOURCES

LEGEND

- EXISTING DITCH
- - - - - EXISTING FENCELINE



ILLINOIS DEPARTMENT OF TRANSPORTATION

PLAN OF PROPOSED IMPROVEMENTS

STA 573+25 TO 579+20

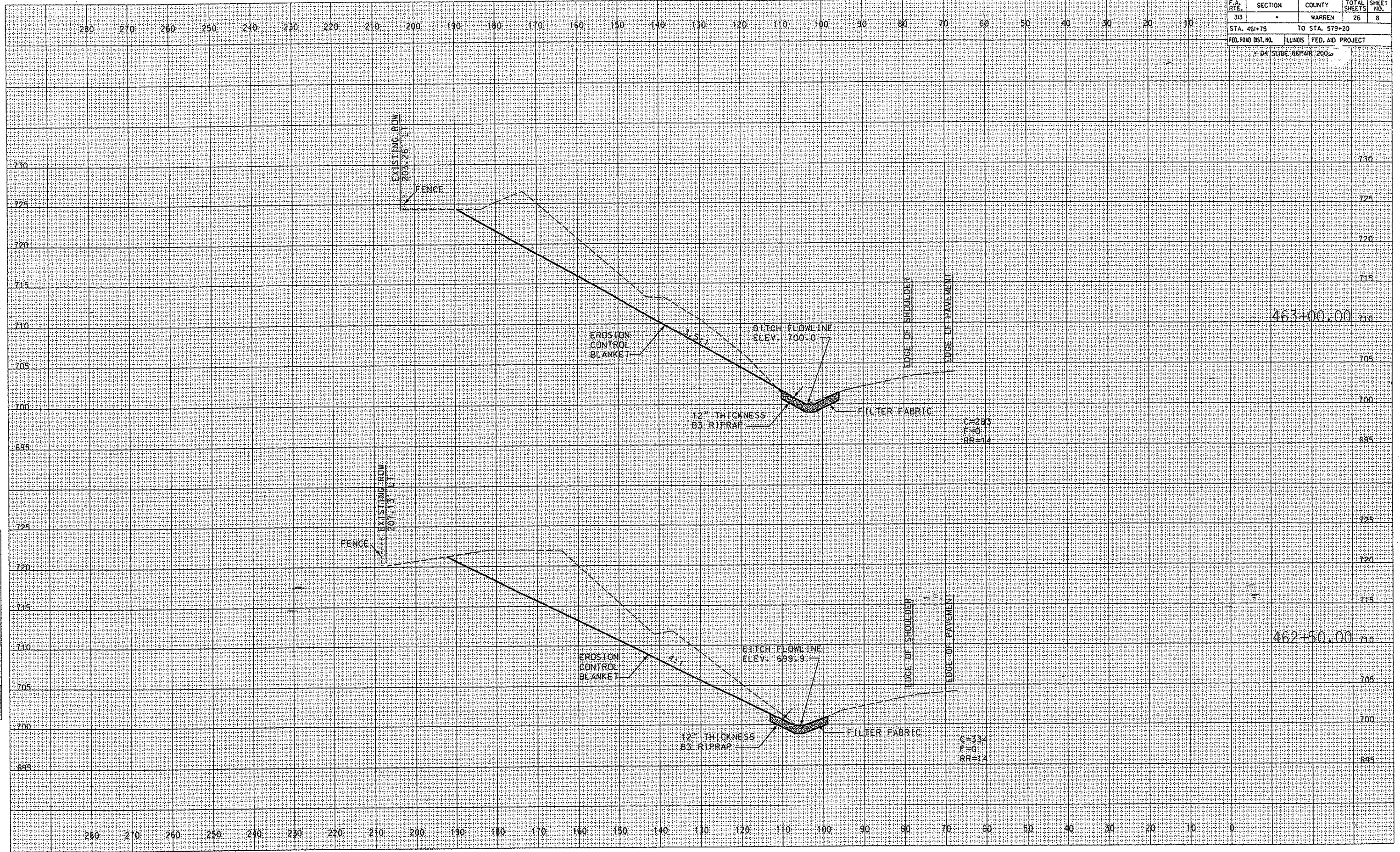
SCALE: AS SHOWN
DATE: 11/3/2004

DRAWN BY: BALSER
DESIGNED BY: PETERSON
CHECKED BY:

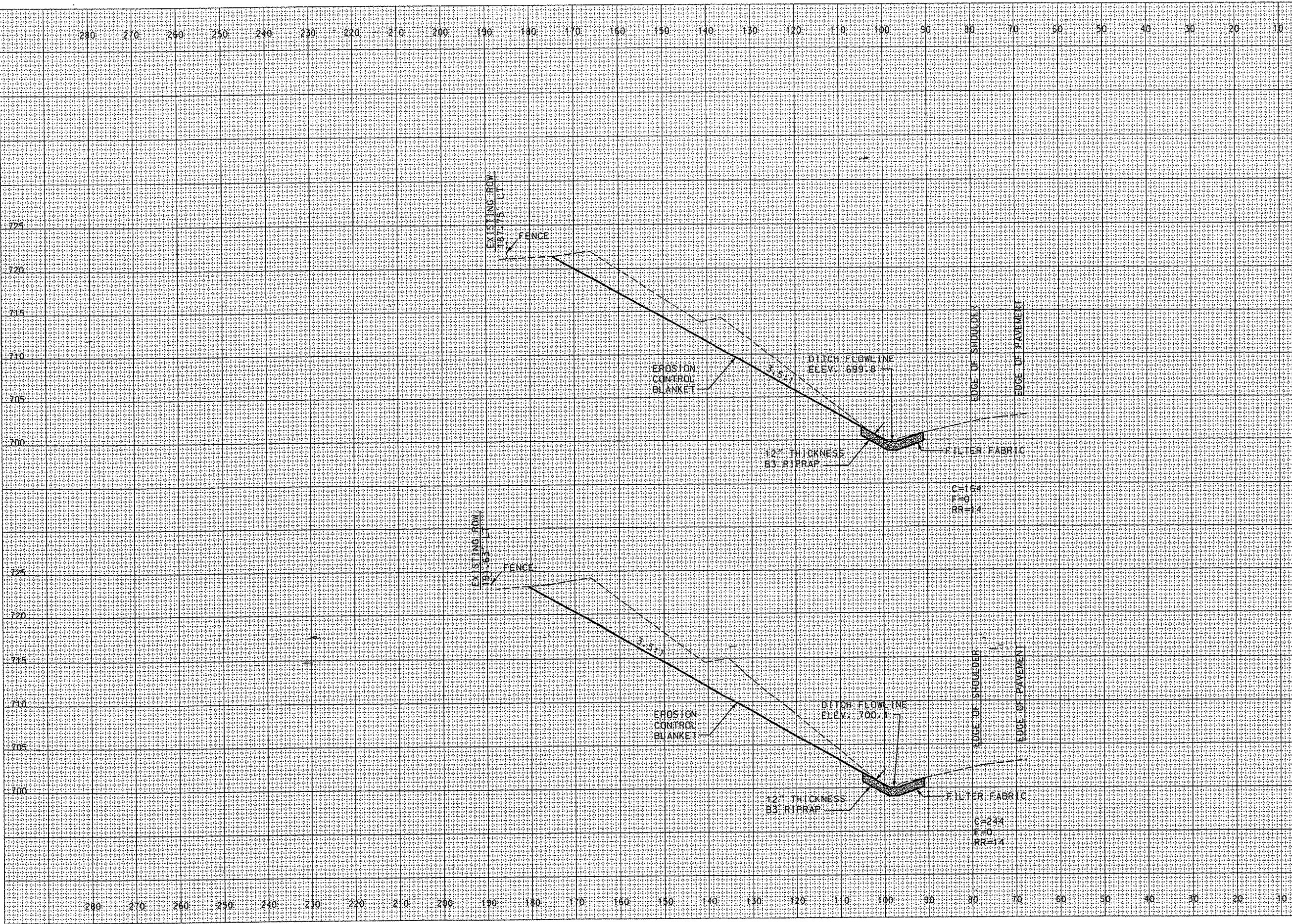
F.A. RTE.	SECTION	COUNTY	TOTAL SHEETS	SHEET NO.
313		WARREN	26	8
STA. 461+75		TO STA. 579+20		
FED. ROAD DIST. NO.	ILLINOIS	FED. AID PROJECT		
2:04 SLIDE REPAIR 200'				

DATE	
BY	
FINAL SURVEY	
NOTED	
AREA	
AREA	
AREA	

DATE	
BY	
ORIGINAL SURVEY	
NOTED	
AREA	
AREA	
AREA	



F.A. R.T.E.	SECTION	COUNTY	TOTAL SHEETS	SHEET NO.
313	*	WARREN	26	10
STA. 461+75		TO STA. 579+20		
FED. ROAD DIST. NO.		ILLINOIS	FED. AID PROJECT	
		*04 SLIDE REPAIR 2006		



BY _____ DATE _____
 SURVEYED _____
 PLATTED _____
 NOTE BOOK _____
 AREAS CHECKED _____

BY _____ DATE _____
 SURVEYED _____
 PLATTED _____
 NOTE BOOK _____
 AREAS CHECKED _____

465+00.00

464+50.00

725	725
720	720
715	715
710	710
705	705
700	700
725	725
720	720
715	715
710	710
705	705
700	700

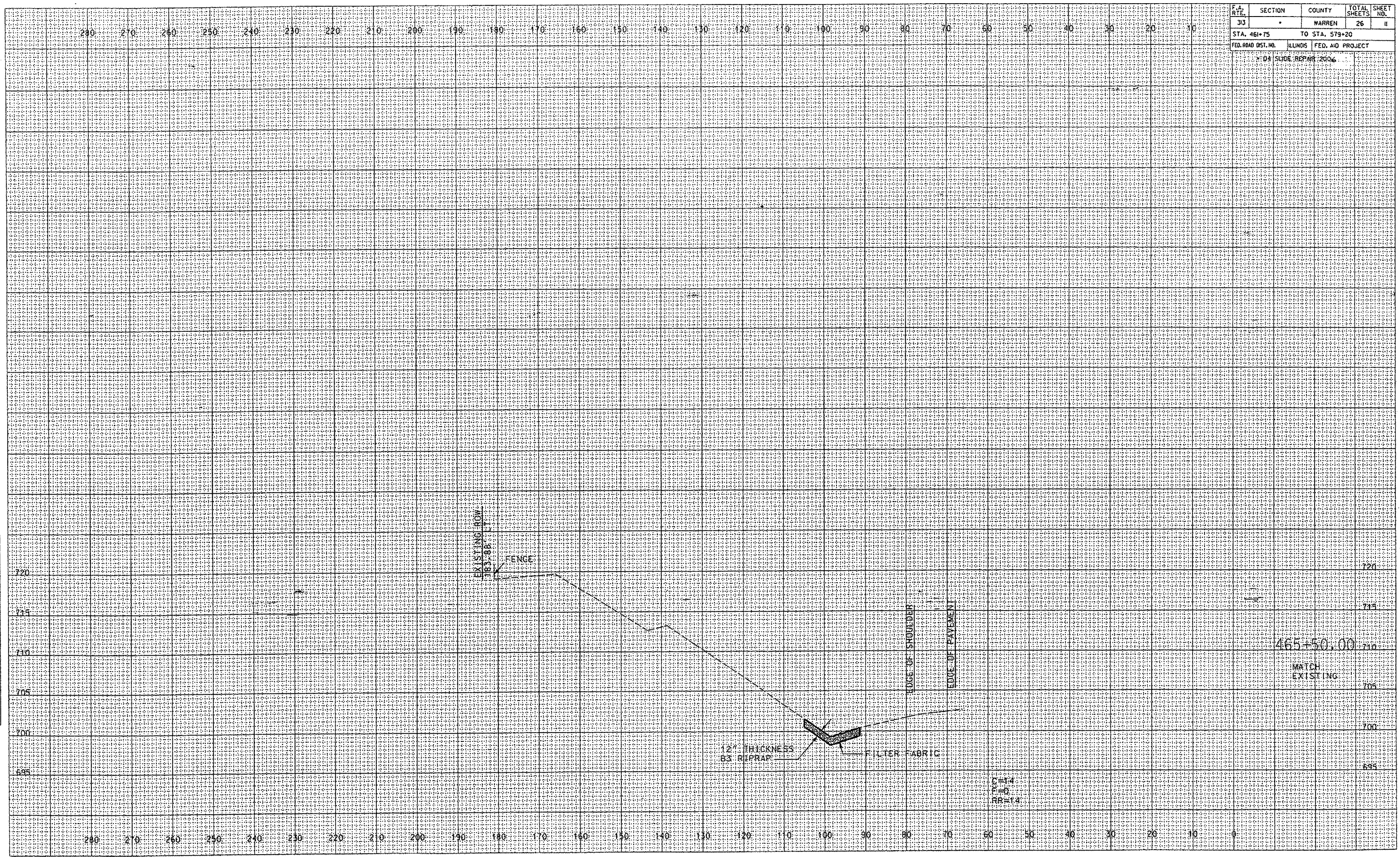
280 270 260 250 240 230 220 210 200 190 180 170 160 150 140 130 120 110 100 90 80 70 60 50 40 30 20 10

280 270 260 250 240 230 220 210 200 190 180 170 160 150 140 130 120 110 100 90 80 70 60 50 40 30 20 10 0

F.A. RTE.	SECTION	COUNTY	TOTAL SHEETS	SHEET NO.
33	*	WARREN	26	11
STA. 461+75		TO STA. 579+20		
FED. ROAD DIST. NO.		ILLINOIS	FED. AID PROJECT	

DATE	BY
DATE	BY
DATE	BY
DATE	BY

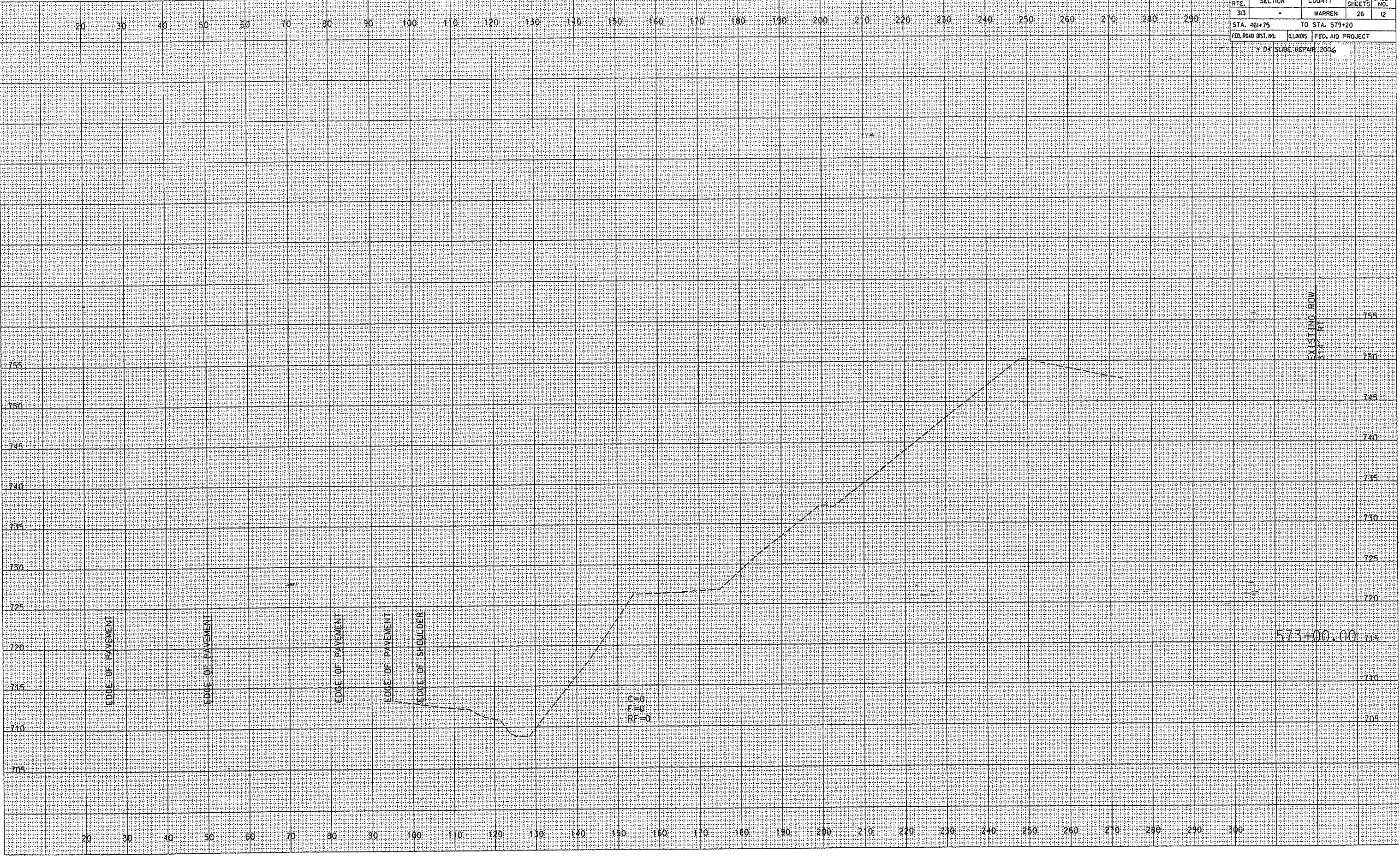
DATE	BY
DATE	BY
DATE	BY
DATE	BY



F.A. RTE.	SECTION	COUNTY	TOTAL SHEETS	SHEET NO.
313		WARREN	26	12
STA. 46+75		TO STA. 579+20		
FED. ROAD DIST. NO.	BLINDS	FED. AID PROJECT		
		4 DA SLIDE REPAIR 2006		

DATE	BY
SURVEYED PLOTTED NOTE BOOK AREAS CHECKED	
NO.	

DATE	BY
SURVEYED PLOTTED NOTE BOOK AREAS CHECKED	
NO.	



EXISTING ROW
17.7 FT

573+00.00

DITCH

EDGE OF PAVEMENT

EDGE OF PAVEMENT

EDGE OF PAVEMENT

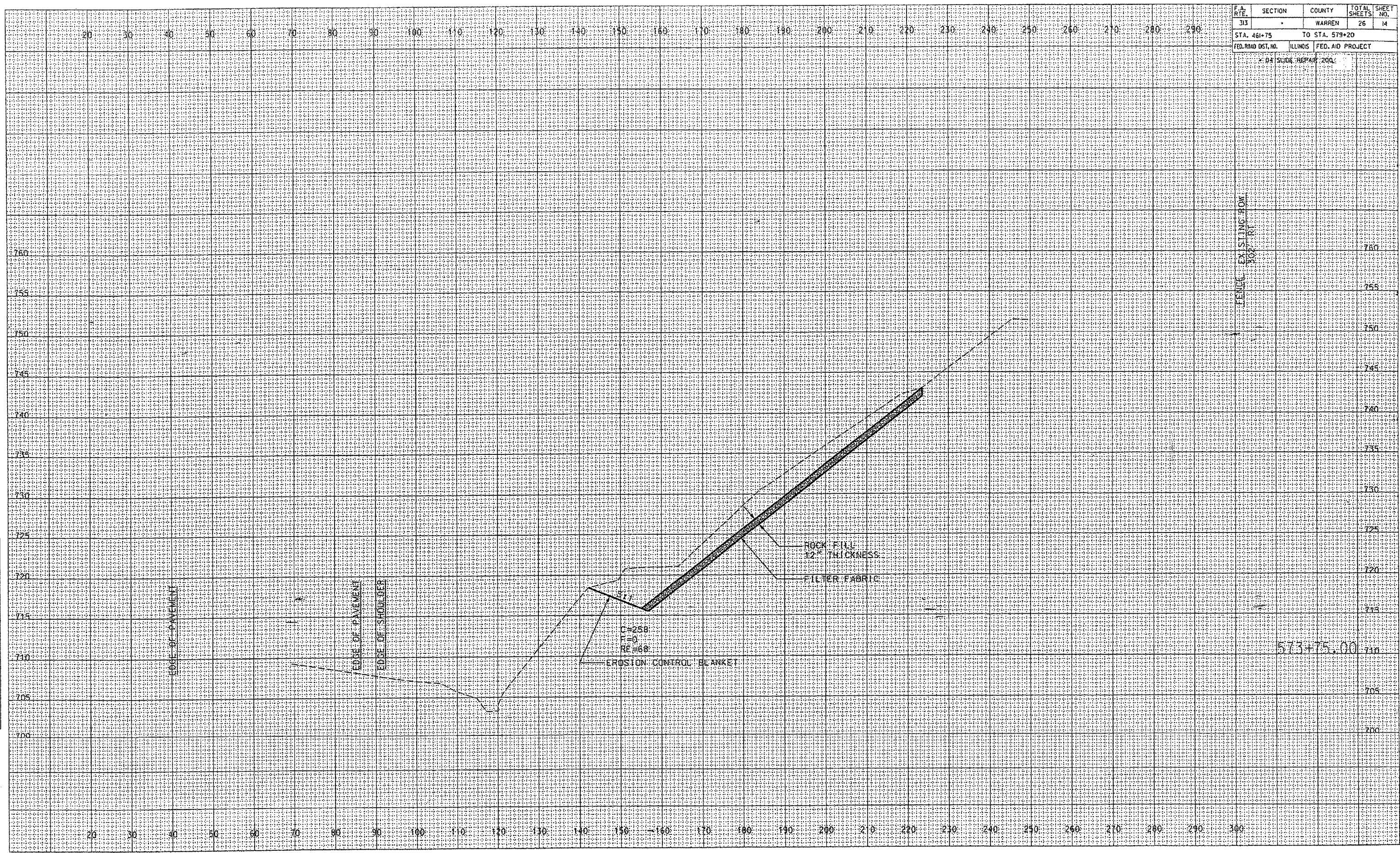
EDGE OF PAVEMENT

EDGE OF SHOULDER

F.A. RTE.	SECTION	COUNTY	TOTAL SHEETS	SHEET NO.
313		WARREN	26	14
STA. 461+75		TO STA. 579+20		
FED. ROAD DIST. NO.	ILLINOIS	FED. AID PROJECT		
		* 04 SLIDE REPAIR 2002		

DATE	BY		
REVISIONS			
NO.	DATE	BY	DESCRIPTION

DATE	BY		
REVISIONS			
NO.	DATE	BY	DESCRIPTION



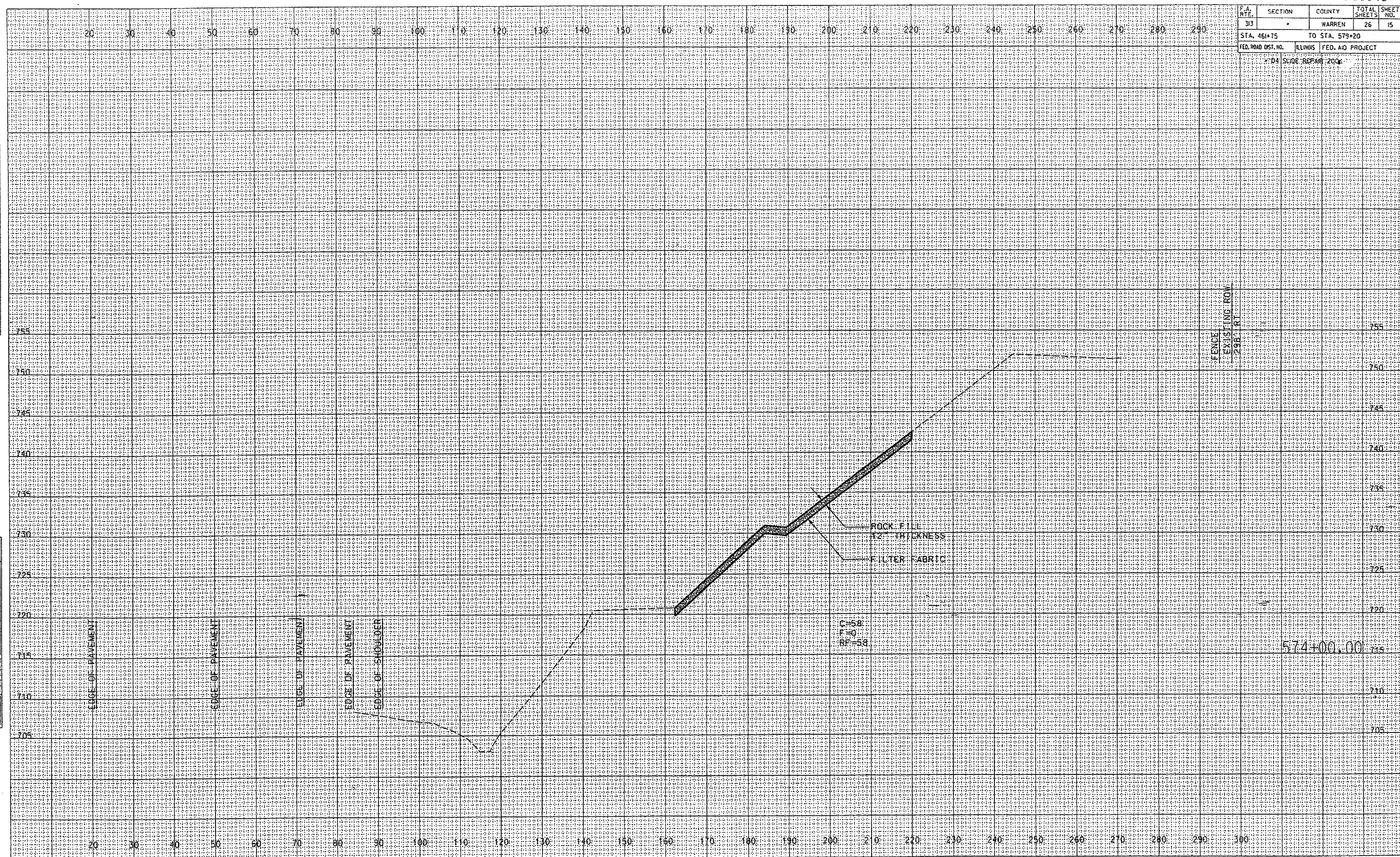
FENCE EXISTING FOR 302' RT

573+75.00

F.A. RTE.	SECTION	COUNTY	TOTAL SHEETS	SHEET NO.
33	*	WARREN	26	15
STA. 461+75		TO STA. 579+20		
FED. ROAD DIST. NO.	ILLINOIS	FED. AID PROJECT		

DATE _____
 BY _____
 SURVEYED _____
 PLOTTED _____
 CHECKED _____
 NOTE BOOK NO. _____
 AREAS CHECKED _____

DATE _____
 BY _____
 SURVEYED _____
 PLOTTED _____
 CHECKED _____
 NOTE BOOK NO. _____
 AREAS CHECKED _____



FENCE
 EXISTING ROW
 296 FT

ROCK FILL
 12" THICKNESS
 FILTER FABRIC

RT=5.8
 RL=6.5
 RP=5.8

574+00.00

F.A. RTE.	SECTION	COUNTY	TOTAL SHEETS	SHEET NO.
313	.	WARREN	26	16
STA. 461+75		TO STA. 579+20		
FED. ROAD DIST. NO.		ILLINOIS FED. AID PROJECT		

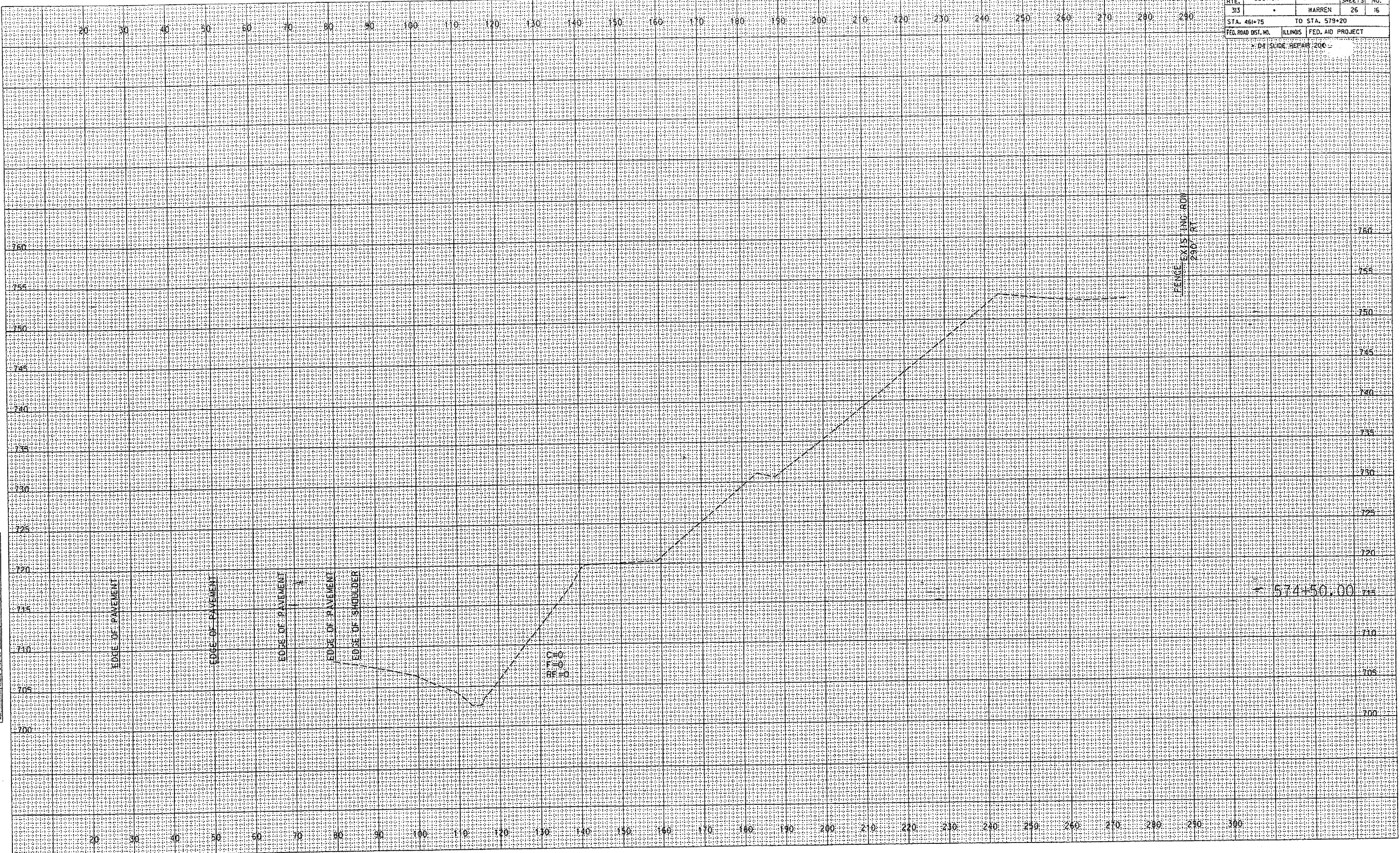
* D4 SLIDE REPAIR 200'

DATE	
BY	DATE

DATE	BY

DATE	
BY	DATE

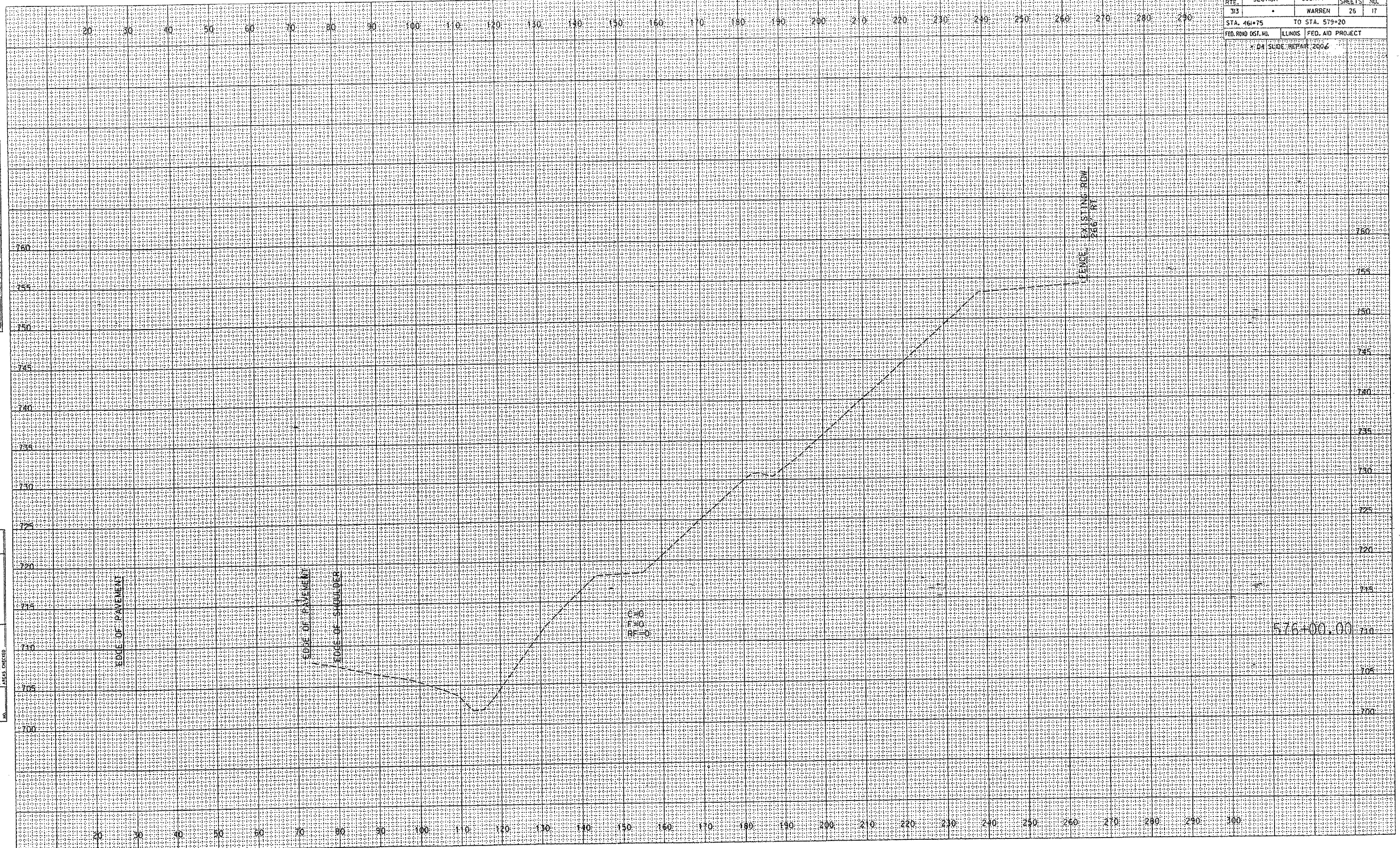
DATE	BY



F.A. RTE.	SECTION	COUNTY	TOTAL SHEETS	SHEET NO.
313	*	WARREN	26	17
STA. 461+75		TO STA. 579+20		
FED. ROAD DIST. NO.	ILLINOIS	FED. AID PROJECT		
* DA SLIDE REPAIR 2006				

DATE	
BY	
ORIGINAL SURVEY PLOTTED	
REPLATE	
AREAS CHECKED	
NO.	

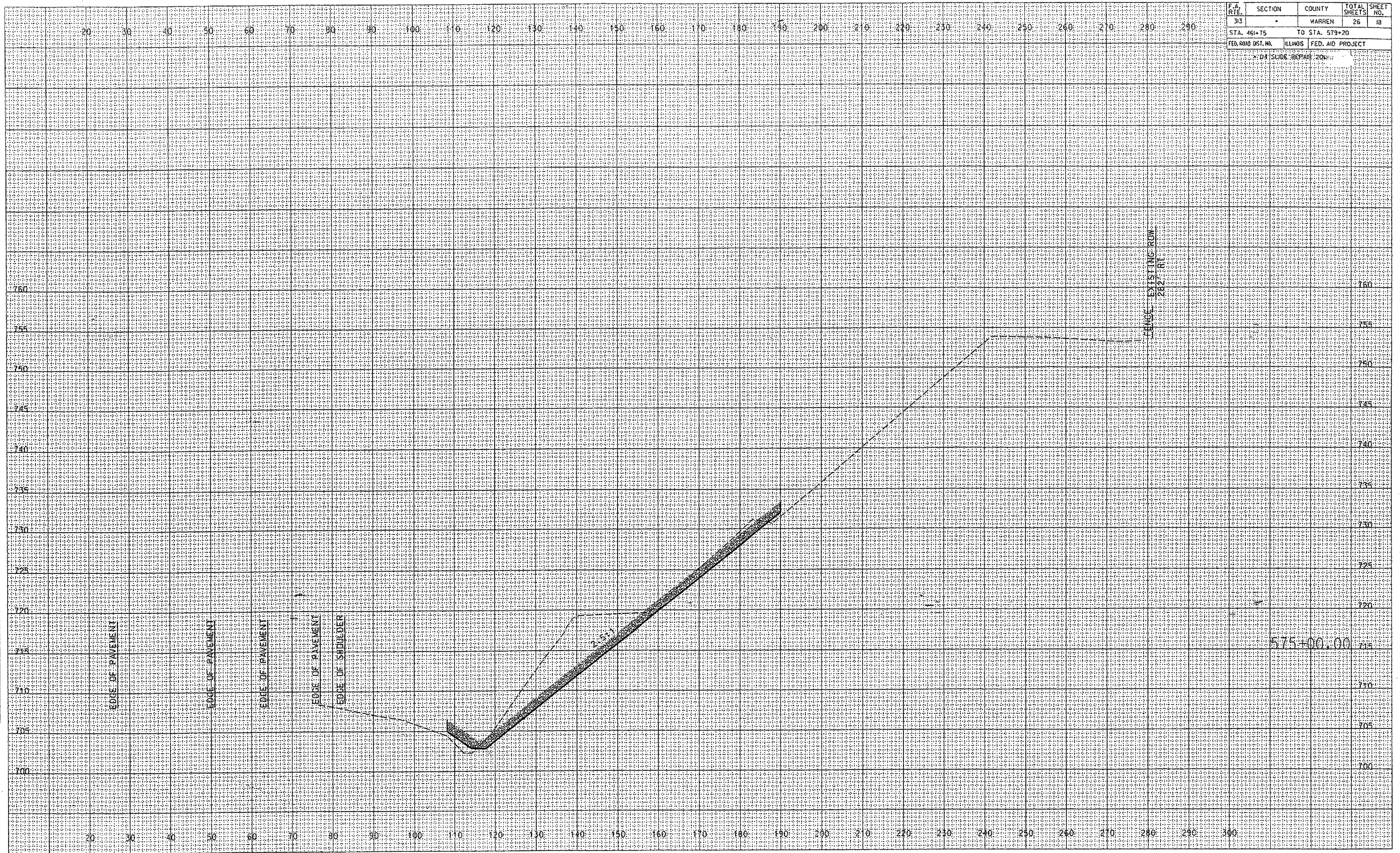
DATE	
BY	
ORIGINAL SURVEY PLOTTED	
REPLATE	
AREAS CHECKED	
NO.	



F.A. RTE.	SECTION	COUNTY	TOTAL SHEETS	SHEET NO.
313		WARREN	26	18
STA. 461+75		TO STA. 579+20		
FED. ROAD DIST. NO.	ILLINOIS	FED. AID PROJECT		
DA SUBS. REPAIR 200...				

DATE	BY
CONVISED	
SURVEY	
FLORIED	
TEMPALTE	
AREAS	
AREAS CHECKED	

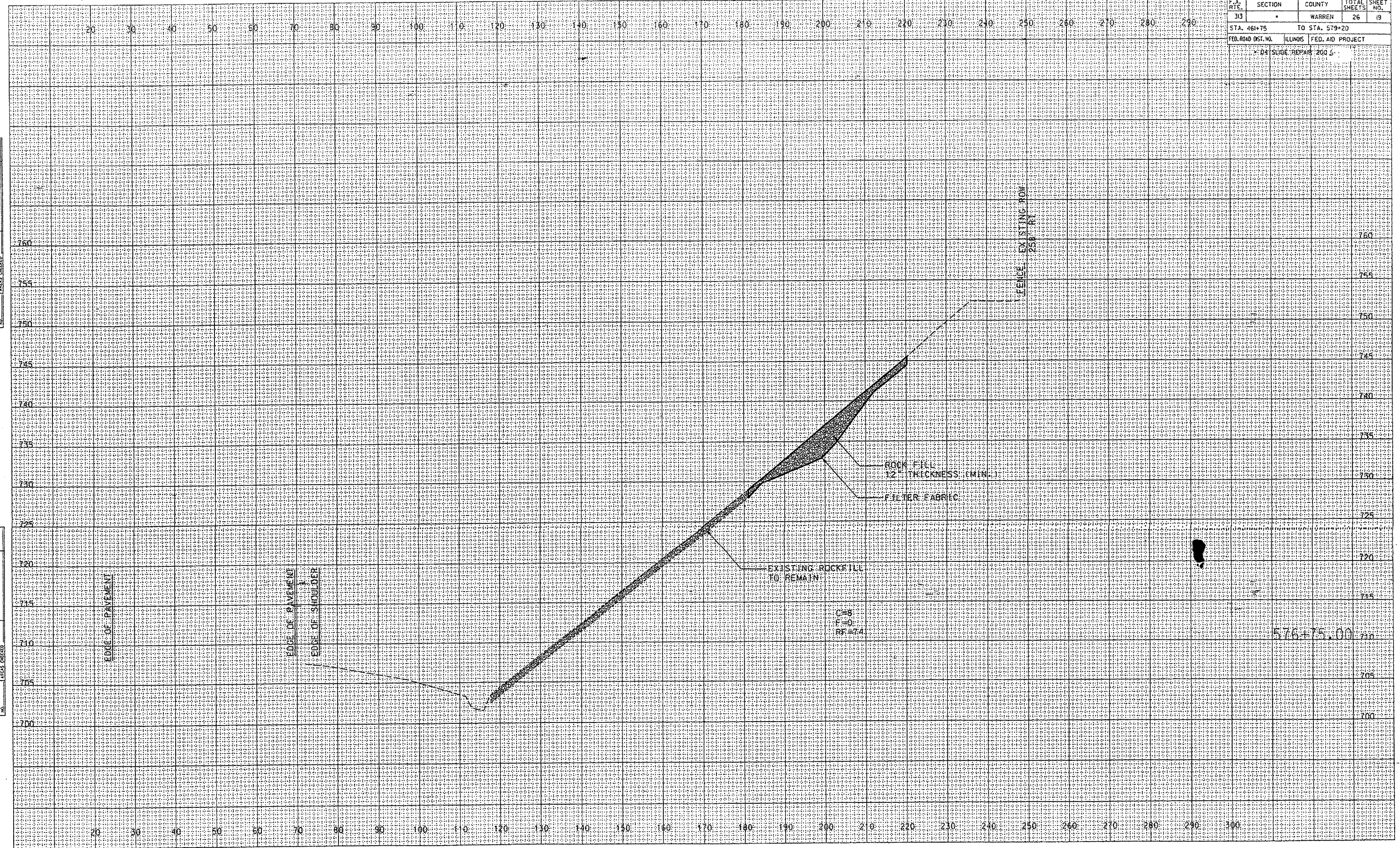
DATE	BY
ORIGINAL	
SURVEY	
NOTE BOOK	
AREAS	
AREAS CHECKED	



F.A. RTE.	SECTION	COUNTY	TOTAL SHEETS	SHEET NO.
313		WARREN	26	19
STA. 461+75		TO STA. 579+20		
FED. ROAD DIST. NO.		ILLINOIS		FED. AID PROJECT
				* D4 SLIDE REPAIR 200 L

DATE	
BY	
ORIGINAL SURVEY	
PIOTTED	
NOTE BOOK	
AREAS CHECKED	

DATE	
BY	
ORIGINAL SURVEY	
PIOTTED	
NOTE BOOK	
AREAS CHECKED	



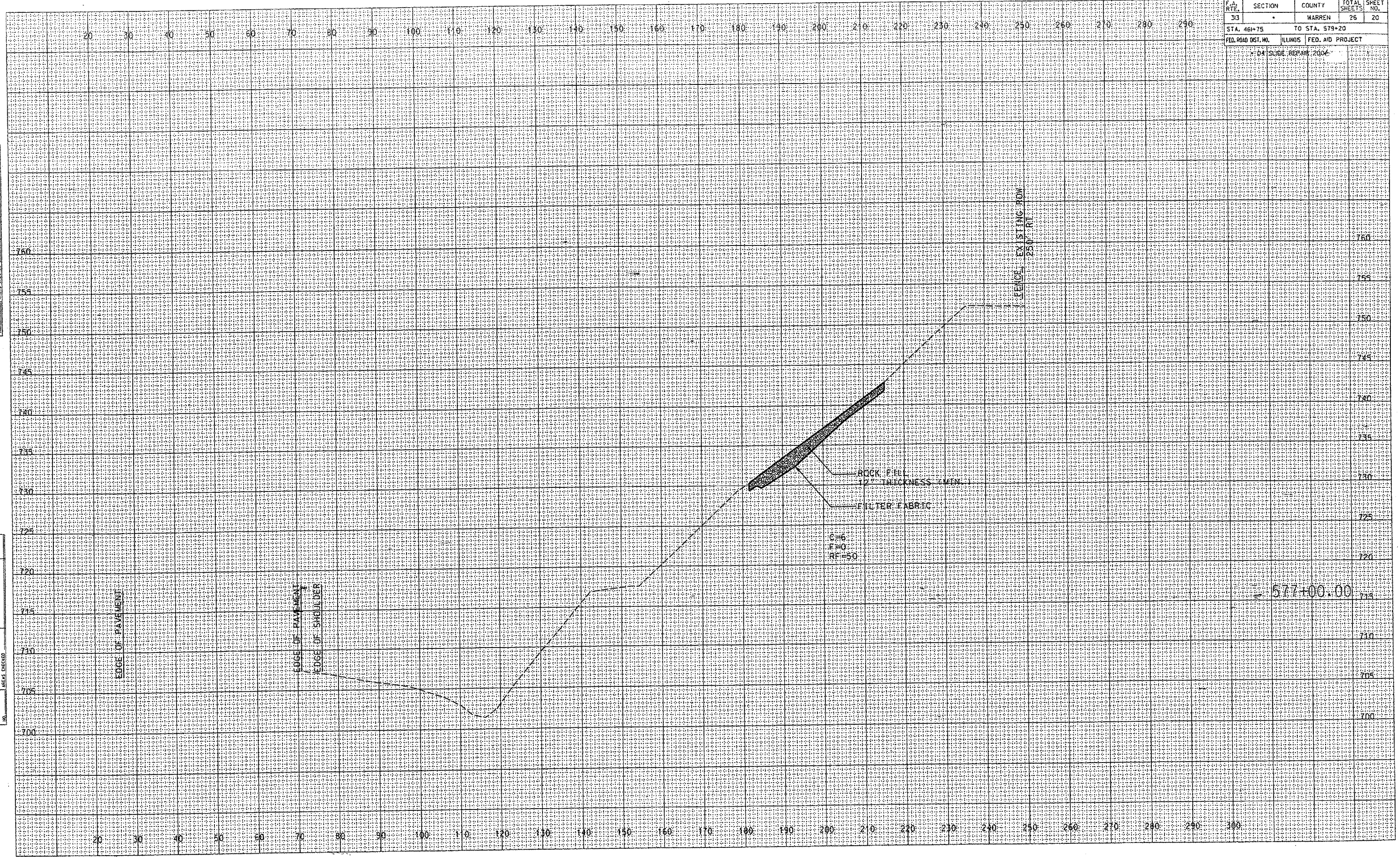
576+75.00

C=8
F=0
RF=7.4

F.A. RTE.	SECTION	COUNTY	TOTAL SHEETS	SHEET NO.
313	*	WARREN	26	20
STA. 46+75		TO STA. 579+20		
FED. ROAD DIST. NO.	ILLINOIS	FED. AID PROJECT		
* 04 SLIDE REPAIR 2006 *				

DATE	BY
EMERGED	
PLOTTED	
NOTE BOOK	
AREAS CHECKED	

DATE	BY
EMERGED	
PLOTTED	
NOTE BOOK	
AREAS CHECKED	



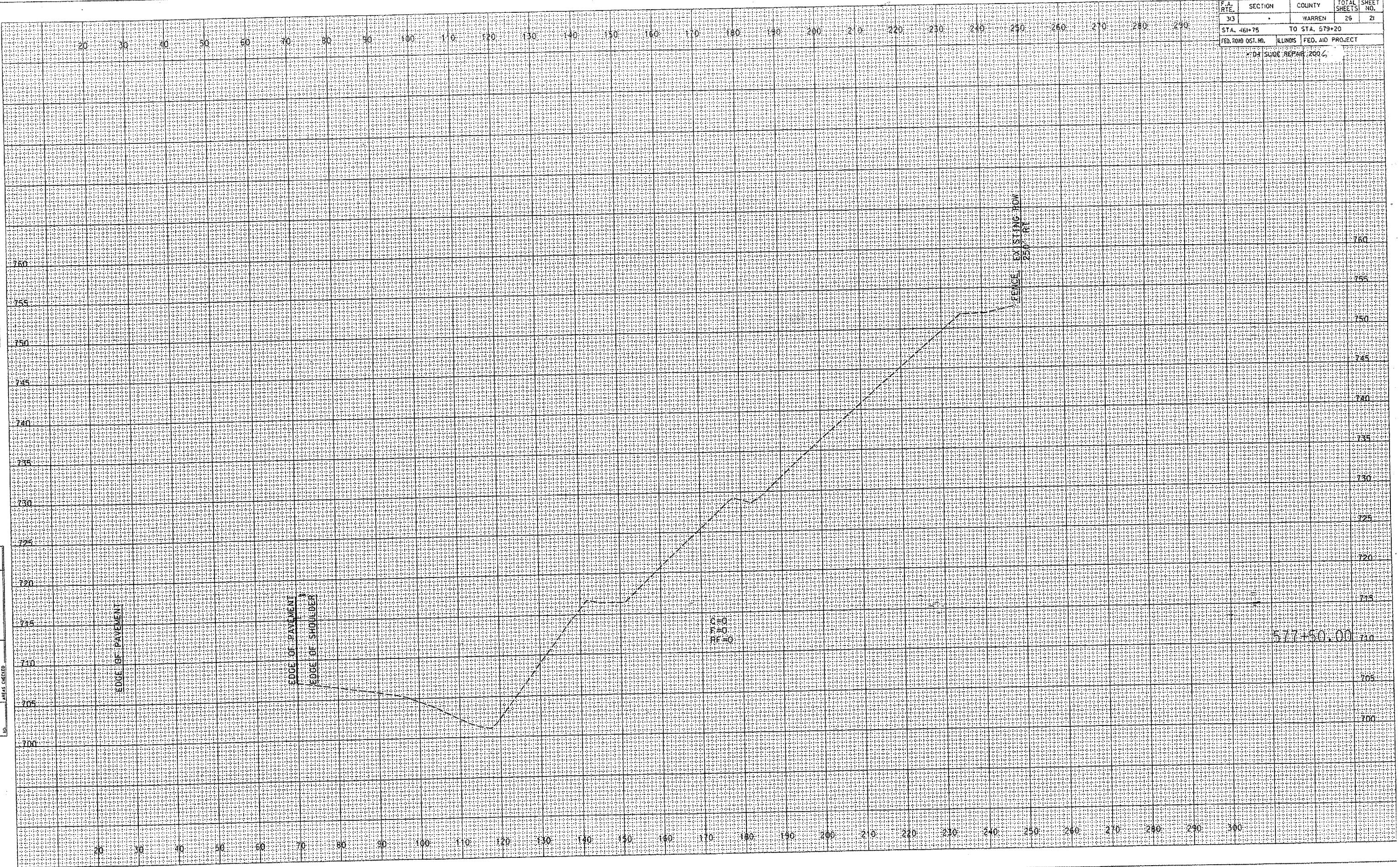
F.A. RTE.	SECTION	COUNTY	TOTAL SHEETS	SHEET NO.
313		WARREN	26	21
STA. 461+75		TO STA. 579+20		
FED. ROAD DIST. NO.		ILLINOIS	FED. AID PROJECT	
* DRAINAGE REPAIR 2006				

DATE _____ BY _____

FINAL SURVEY
 SURVEYED
 TEMPLATE
 NOTE BOOK
 AREAS CHECKED

DATE _____ BY _____

ORIGINAL SURVEY
 SURVEYED
 TEMPLATE
 NOTE BOOK
 AREAS CHECKED



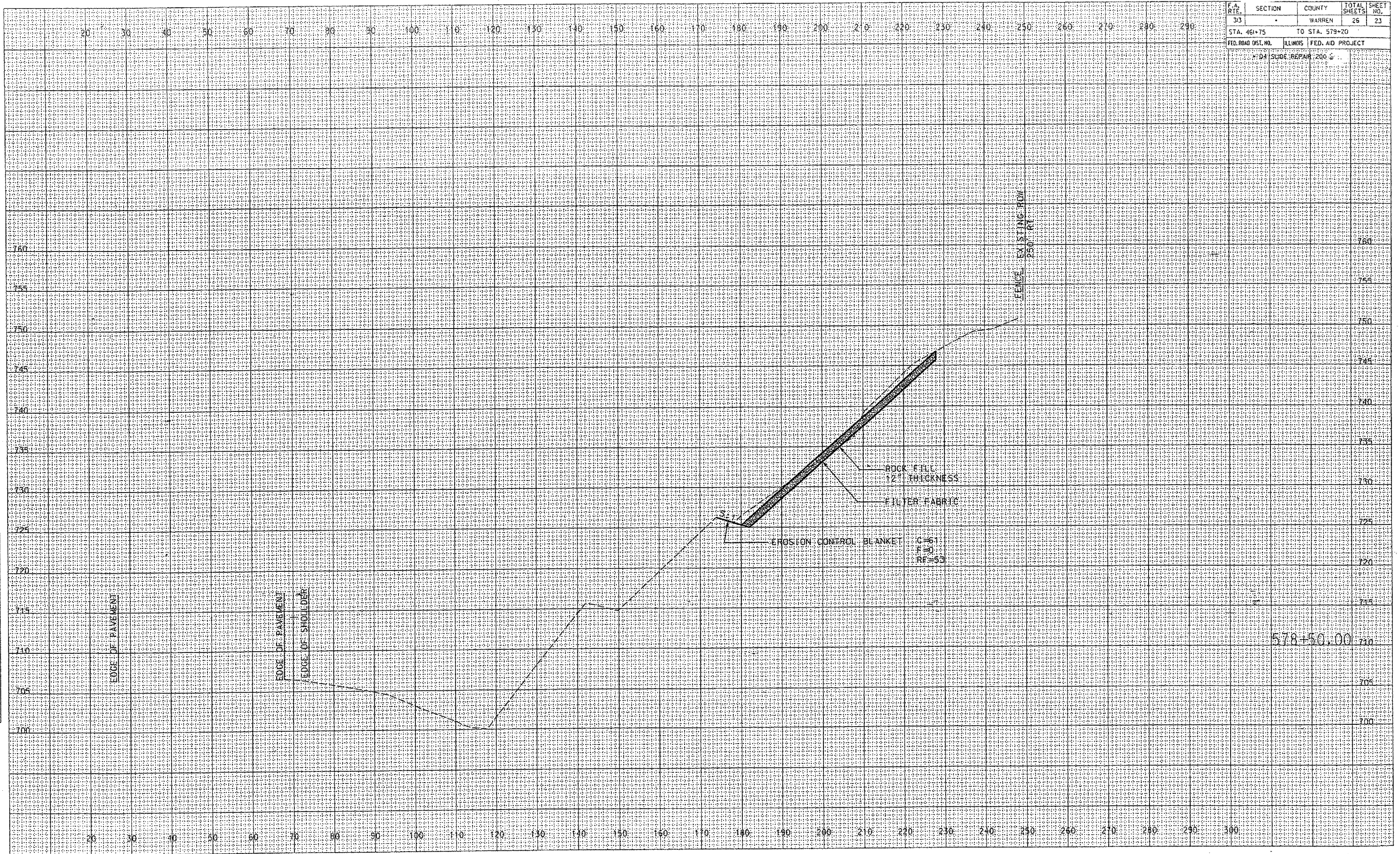
F.A. RTE.	SECTION	COUNTY	TOTAL SHEETS	SHEET NO.
33		WARREN	26	23
STA. 46+75		TO STA. 579+20		
FED. ROAD DIST. NO.	ILLINOIS	FED. AID PROJECT		
		D4 SLIDE REPAIR 200 ±		

DATE	BY

DATE	BY

DATE	BY

DATE	BY



578+50.00

