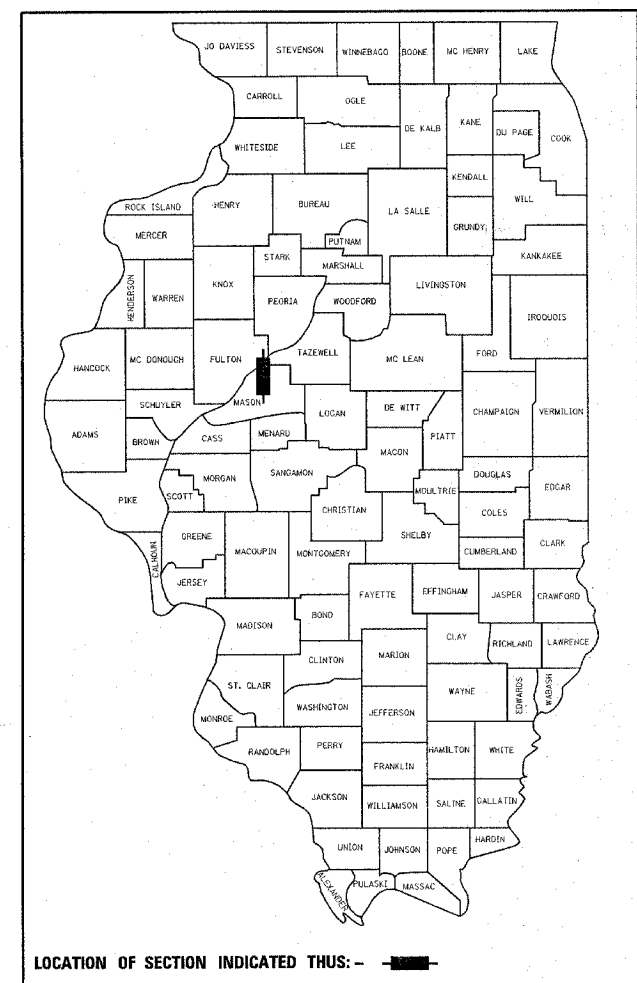


PARK ROADS SAND RIDGE STATE FOREST INTERNAL ROADS 2004

D-96-541-96



STATE OF ILLINOIS
DEPARTMENT OF TRANSPORTATION

DIVISION OF HIGHWAYS

**PROPOSED
HIGHWAY PLANS**

PARK ROADS (SANDRIDGE ROAD & JAKE WOLF MEMORIAL FISH HATCHERY ROAD)
SAND RIDGE STATE FOREST 2004
MASON COUNTY
C-96-554-04

INDEX OF SHEETS

| SHT NO. | DESCRIPTION |
|---------|---|
| 1 | COVER SHEET |
| 2 | GENERAL NOTES, & COMMITMENTS |
| 3 | DETAILED LOCATION MAP |
| 4-7 | SUMMARY OF QUANTITIES |
| 8-12 | SCHEDULE OF QUANTITIES |
| 13-16 | SURVEY LAYOUT INFORMATION (HORIZONTAL AND VERTICAL CONTROL POINTS) |
| 17-18 | TYPICAL SECTIONS |
| 19-22 | PLAN SHEETS (JAKE WOLF MEMORIAL FISH HATCHERY ROAD AND PARKING AREA). |
| 23-35 | PLAN & PROFILE SHEETS (SAND RIDGE ROAD) |
| 36-37 | PARKING AREA DETAILS (JAKE WOLF MEMORIAL FISH HATCHERY PARKING LOT) |
| 38 | PARKING AREA DETAILS (SAND RIDGE ROAD) |
| 39 | "BRAKE FOR WILDLIFE" SIGN LOCATIONS AND DETAILS |
| 40-48 | STORM WATER POLLUTION PREVENTION PLANS |
| 49 | BORROW SITE DETAILS (SAND RIDGE ROAD BORROW SITE) |
| 50 | WETLAND MITIGATION POND GRADING DETAILS |
| 51-52 | DETAILS FOR RURAL ENTRANCE AND MAILBOX TURNOUT |
| 53-54 | MISCELLANEOUS DETAILS |
| 55-84 | CROSS SECTIONS (SAND RIDGE ROAD) |
| 85-86 | CROSS SECTIONS (SAND RIDGE ROAD WETLAND MITIGATION POND) |

LIST OF STANDARDS

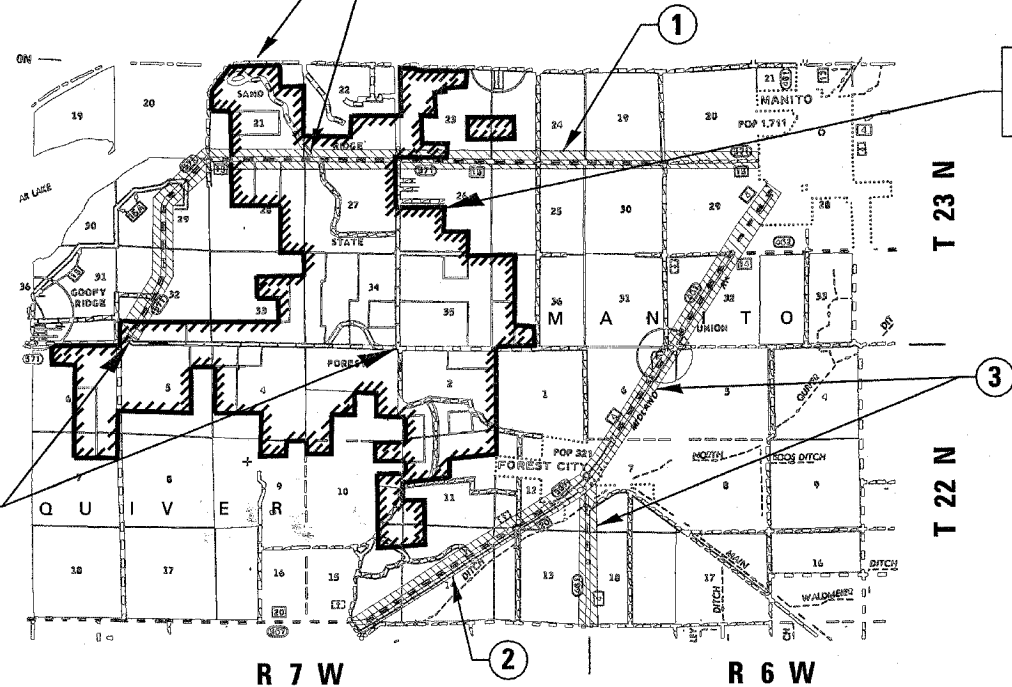
| | |
|-----------|-----------|
| 280001-02 | 701326-02 |
| 442201-01 | 702001-05 |
| 542301 | 720001 |
| 542401 | 720006 |
| 606001-02 | 720011 |
| 635001 | 780001-01 |
| 701001-01 | 000001-04 |
| 701006-02 | 001001 |
| 701011-01 | 001006 |
| 701201-02 | BLR 21-6 |
| | BLR 22-4 |

SEE PAGE #2 FOR ROADWAY LIMITS AND STATION EQUATIONS

PROJECT ADDITIONALLY INCLUDES RECONSTRUCTION OF SAND RIDGE ROAD, 16,537.79 FT = 3.13 MILES

PROJECT INCLUDES RESURFACING OF JAKE WOLF MEMORIAL FISH HATCHERY ENTRANCE ROAD & PARKING AREAS 5,877.90 FT = 1.11 MILES

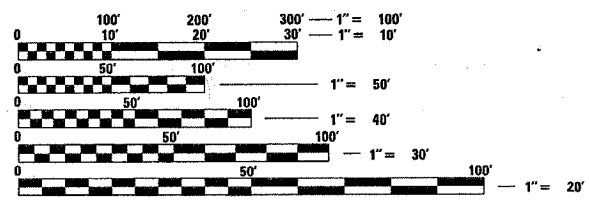
SAND RIDGE STATE FOREST LIMITS



TOTAL LENGTH OF IMPROVEMENT 22,609.26 FT = 4.28 MILES

DESIGNATED HAUL ROADS

- ① CH 15 (GOOFY RIDGE BLACKTOP) FROM SAND RIDGE RD. TO MANITO
- ② CH 20 FROM HAVANA TO FOREST CITY
- ③ CH 4 FROM US 136 TO MANITO



FULL SIZE PLANS HAVE BEEN PREPARED USING STANDARD ENGINEERING SCALES. REDUCED SIZED PLANS WILL NOT CONFORM TO STANDARD SCALES. IN MAKING MEASUREMENTS ON REDUCED PLANS, THE ABOVE SCALES MAY BE USED.

J.U.L.I.E.
JOINT UTILITY LOCATION INFORMATION FOR EXCAVATION
1-800-892-0123

CONTRACT 72118

STATE OF ILLINOIS
DEPARTMENT OF TRANSPORTATION
DIVISION OF HIGHWAYS

SUBMITTED February 8, 2005

Victor Mader
DISTRICT ENGINEER

Mike Sine
ENGINEER OF DESIGN AND ENVIRONMENT

Victor Mader
DIRECTOR, DIVISION OF HIGHWAYS

PRINTED BY THE AUTHORITY OF THE STATE OF ILLINOIS

PROJECT ENGINEER: JOHN NEGANGARD (217)782-6990
SENIOR SQUAD LEADER: MARK DUST (217)785-0597