

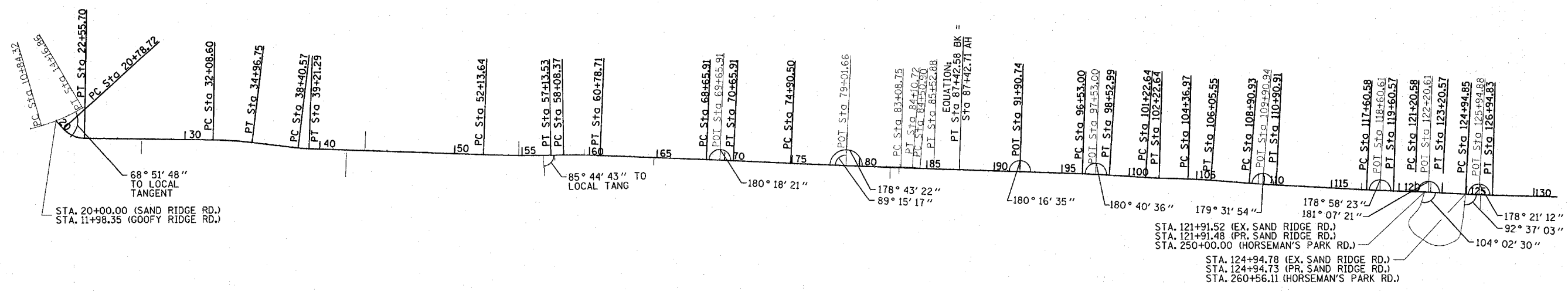
SECTION	COUNTY	TOTAL SHEETS	SHEET NO.
---	---	15	15

* PARK ROADS
** SAND RIDGE STATE FOREST INTERNAL ROADS 2004



<p>EXIST. CURVE 600 PI STA. = 12+51.47 Δ = 14° 23' 40" (LT) D = 4° 19' 43" R = 1,323.63' T = 167.15' L = 332.54' E = 10.51' P.C. STA. = 10+84.32 P.T. STA. = 14+16.86</p>	<p>PROP. CURVE PS602 PI STA. = 21+72.52 Δ = 46° 58' 04" (LT) D = 26° 32' 18" R = 215.90' T = 93.80' L = 176.98' E = 19.50' P.C. STA. = 20+78.72 P.T. STA. = 22+55.70 SE = 2.00% SE TRANS: RT STA 20+20.720 TO STA 21+28.720 (-2.0% - +2.0%) RT STA 22+30.700 TO STA 23+80.700 (+2.0 - -2.0%) LT STA 20+20.720 TO STA 23+80.700 (-2.0% - -2.0%)</p>	<p>PROP. CURVE PS603 PI STA. = 33+52.81 Δ = 5° 57' 19" (RT) D = 2° 04' 00" R = 2,772.27' T = 144.21' L = 288.15' E = 3.75' P.C. STA. = 32+08.60 P.T. STA. = 34+96.75 SE = 4.10% SE TRANS: LT STA 30+18.112 TO STA 32+63.600 (-2.0% - +4.1%) RT STA 31+79.088 TO STA 32+63.600 (-2.0 - -4.1%) LT STA 34+41.750 TO STA 36+82.502 (+4.1% - -2.0%) RT STA 34+41.750 TO STA 35+26.262 (-4.1% - -2.0%)</p>	<p>PROP. CURVE PS604 PI STA. = 38+80.95 Δ = 4° 51' 49" (LT) D = 6° 01' 31" R = 950.93' T = 40.38' L = 80.72' E = 0.86' P.C. STA. = 38+40.57 P.T. STA. = 39+21.29 SE = 6.00% SE TRANS: LT STA 37+85.570 TO STA 38+95.570 (-2.0% - -6.0%) RT STA 36+82.500 TO STA 38+95.570 (-2.0 - +6.0%) LT STA 38+66.290 TO STA 39+76.290 (-6.0% - -2.0%) RT STA 38+66.290 TO STA 40+86.290 (+6.0% - -2.0%)</p>	<p>PROP. CURVE PS605 PI STA. = 54+63.64 Δ = 2° 55' 29" (LT) D = 0° 35' 06" R = 9,793.38' T = 250.00' L = 499.89' E = 3.19' P.C. STA. = 52+13.64 P.T. STA. = 57+13.53 SE = N.C.</p>	<p>PROP. CURVE PS606 PI STA. = 59+43.58 Δ = 3° 08' 37" (RT) D = 1° 09' 46" R = 4,927.44' T = 135.20' L = 270.34' E = 1.85' P.C. STA. = 58+08.37 P.T. STA. = 60+78.71 SE = 2.70% SE TRANS: LT STA 55+76.148 TO STA 58+63.370 (-2.0% - +2.7%) RT STA 56+98.370 TO STA 58+63.370 (-2.0 - -2.7%) LT STA 60+23.710 TO STA 63+10.932 (+2.7% - -2.0%) RT STA 60+23.710 TO STA 61+88.710 (-2.7% - -2.0%)</p>	<p>PROP. CURVE PS607 PI STA. = 69+65.91 Δ = 0° 18' 21" (RT) D = 0° 09' 11" R = 37,453.53' T = 100.00' L = 200.00' E = 0.13' P.C. STA. = 68+65.91 P.T. STA. = 70+65.91 SE = N.C.</p>
---	--	--	--	--	--	---

<p>PROP. CURVE PS608 PI STA. = 81+16.55 Δ = 0° 50' 44" (LT) D = 0° 04' 03" R = 84,852.15' T = 626.05' L = 1,252.09' E = 2.31' P.C. STA. = 74+90.50 P.T. STA. = 87+42.58 SE = N.C.</p>	<p>EXIST. CURVE 608 PI STA. = 83+59.74 Δ = 3° 06' 05" (RT) D = 3° 02' 29" R = 1,883.93' T = 51.00' L = 101.98' E = 0.69' e = N.C. P.C. STA. = 83+08.74 P.T. STA. = 84+10.71</p>	<p>EXIST. CURVE 609 PI STA. = 85+01.89 Δ = 2° 40' 11" (LT) D = 2° 37' 04" R = 2,188.70' T = 51.00' L = 101.98' E = 0.59' e = N.C. P.C. STA. = 84+50.89 P.T. STA. = 85+52.87</p>	<p>PROP. CURVE 261 PI STA. = 97+53.00 Δ = 1° 40' 36" (RT) D = 0° 50' 18" R = 6,833.78' T = 100.00' L = 199.99' E = 0.73' P.C. STA. = 96+53.00 P.T. STA. = 98+52.99 SE = 2.10% SE TRANS: LT STA 93+85.847 TO STA 97+07.990 (-2.0% - +2.1%) RT STA 95+42.990 TO STA 97+07.990 (-2.0 - -2.1%) LT STA 97+97.970 TO STA 99+26.56 (+2.1% - 0.0%) RT STA 97+97.970 TO STA 99+26.56 (-2.1% - 0.0%)</p>	<p>PROP. CURVE PSC8 PI STA. = 101+72.64 Δ = 2° 00' 33" (LT) D = 2° 00' 33" R = 2,851.67' T = 50.01' L = 100.00' E = 0.44' P.C. STA. = 101+22.64 P.T. STA. = 102+22.64 SE = 3.97% SE TRANS: LT STA 99+26.560 TO STA 101+72.620 (0.0% - -3.97%) RT STA 99+26.560 TO STA 101+72.620 (0.0 - +3.97%) LT STA 101+72.620 TO STA 103+40.321 (-3.97% - 0.0%) RT STA 101+72.620 TO STA 103+40.321 (+3.97% - 0.0%)</p>	<p>PROP. CURVE PSC9 PI STA. = 105+21.28 Δ = 2° 46' 02" (RT) D = 1° 38' 30" R = 3,490.39' T = 84.31' L = 168.58' E = 1.02' P.C. STA. = 104+36.97 P.T. STA. = 106+05.55 SE = 3.60% SE TRANS: LT STA 103+40.321 TO STA 104+91.960 (0.0% - +3.6%) RT STA 103+40.321 TO STA 104+91.960 (0.0% - -3.6%) LT STA 105+50.540 TO STA 108+04.710 (+3.6% - 0.0%) RT STA 105+50.540 TO STA 108+04.710 (-3.6% - 0.0%)</p>	<p>PROP. CURVE 253 PI STA. = 109+90.93 Δ = 1° 32' 38" (LT) D = 0° 46' 19" R = 7,421.64' T = 100.00' L = 199.99' E = 0.67' P.C. STA. = 108+90.93 P.T. STA. = 110+90.91 SE = 2.00% SE TRANS: LT STA 108+04.710 TO STA 109+45.920 (0.0% - -2.0%) RT STA 108+04.710 TO STA 109+45.920 (0.0 - +2.0%) LT STA 110+35.900 TO STA 112+00.900 (-2.0% - 2.0%) RT STA 110+35.900 TO STA 113+65.900 (+2.0% - 2.0%)</p>	<p>PROP. CURVE 232 PI STA. = 118+60.58 Δ = 1° 01' 37" (LT) D = 0° 30' 49" R = 11,156.97' T = 100.00' L = 199.99' E = 0.45' P.C. STA. = 117+60.58 P.T. STA. = 119+60.57 SE = N.C.</p>	<p>PROP. CURVE 231 PI STA. = 122+20.58 Δ = 1° 07' 21" (RT) D = 0° 33' 40" R = 10,209.51' T = 100.00' L = 199.99' E = 0.49' P.C. STA. = 121+20.58 P.T. STA. = 123+20.57 SE = N.C.</p>
---	---	---	--	---	--	---	--	--



PROP. CURVE 229
PI STA. = 125+94.85
Δ = 1° 38' 47" (LT)
D = 0° 49' 24"
R = 6,959.17'
T = 100.00'
L = 199.99'
E = 0.72'
P.C. STA. = 124+94.85
P.T. STA. = 126+94.83
SE = 2.10%
SE TRANS:
LT STA 123+84.830 TO STA 125+49.830 (-2.0% - -2.1%)
RT STA 122+27.687 TO STA 125+49.830 (-2.0 - +2.1%)
LT STA 126+39.820 TO STA 128+04.820 (-2.1% - -2.0%)
RT STA 126+39.820 TO STA 129+61.963 (+2.1% - -2.0%)

REVISIONS	
NAME	DATE

ILLINOIS DEPARTMENT OF TRANSPORTATION
**ALIGNMENT LAYOUT
SAND RIDGE ROAD**

SCALE: VERT. N/A
HORIZ. 1" = 400'
DATE OCT 2003

DRAWN BY RLR
CHECKED BY JCN