

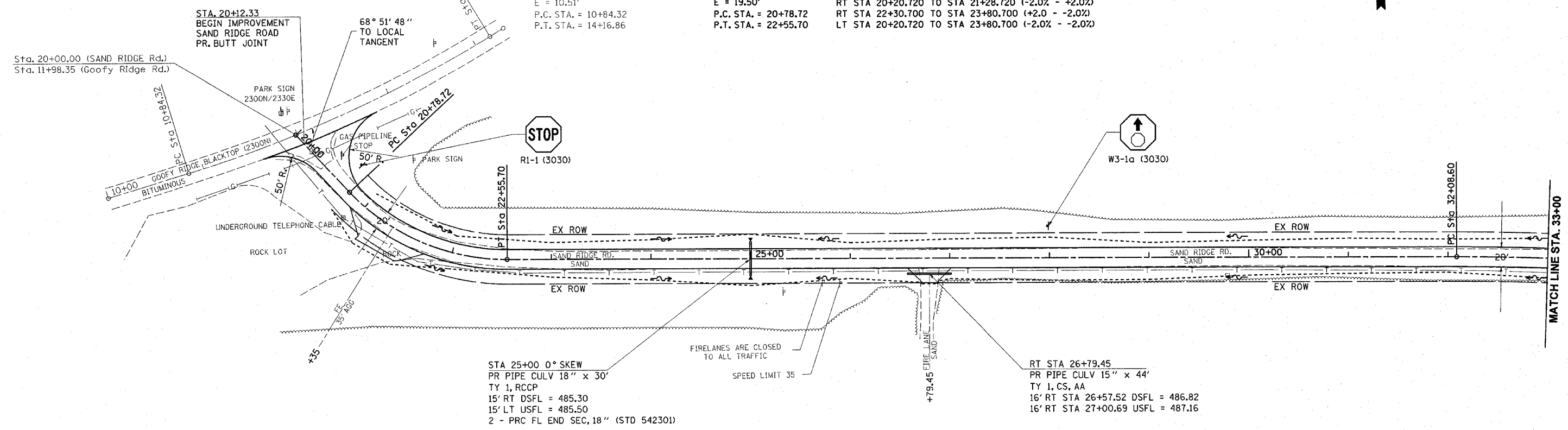
CONTRACT NO. 72118	F.A. RTE.	SECTION	COUNTY	TOTAL SHEETS	SHEET NO.
			MASON	86	23
STA. 20+00		TO STA. 33+00			
FED. ROAD DIST. NO.		ILLINOIS		FED. AID PROJECT	

- PARK ROADS
- SAND RIDGE STATE FOREST INTERNAL ROADS 2004

EXIST. CURVE 600
 PI STA. = 12+51.47
 $\Delta = 14^\circ 23' 40''$ (LT)
 $D = 4^\circ 19' 43''$
 $R = 1,323.63'$
 $T = 167.15'$
 $L = 332.54'$
 $E = 10.51'$
 P.C. STA. = 10+84.32
 P.T. STA. = 14+16.86

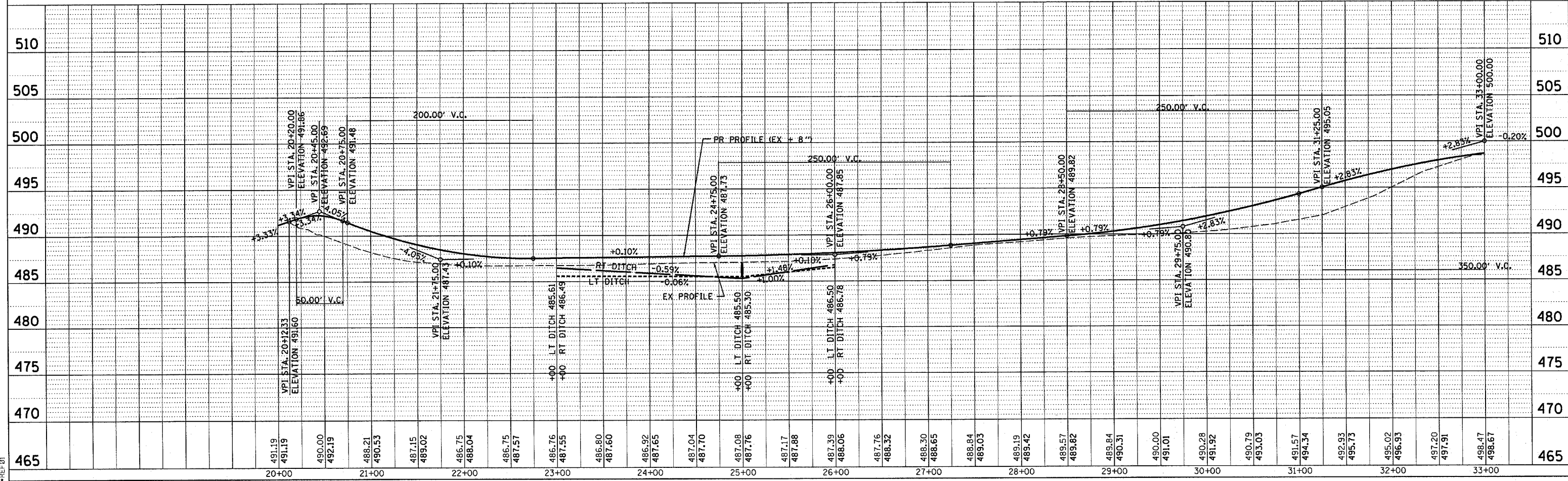
PROP. CURVE PS602
 PI STA. = 21+72.52
 $\Delta = 46^\circ 58' 04''$ (LT)
 $D = 26^\circ 32' 18''$
 $R = 215.90'$
 $T = 93.80'$
 $L = 176.98'$
 $E = 19.50'$
 P.C. STA. = 20+78.72
 P.T. STA. = 22+55.70

SE = 2.00%
 SE TRANS:
 RT STA 20+20.720 TO STA 21+28.720 (-2.0% - +2.0%)
 RT STA 22+30.700 TO STA 23+80.700 (+2.0 - -2.0%)
 LT STA 20+20.720 TO STA 23+80.700 (-2.0% - -2.0%)



PLAN	REVISION	DATE
NO.	BY	
	CHECKED	
	DATE	

PROFILE	REVISION	DATE
NO.	BY	
	CHECKED	
	DATE	



et:\projects\4654196\p&psandridge.dgn
 2/6/2004
 -REF01