

CONTRACT NO. 72118		F.A. RTE.	SECTION	COUNTY	TOTAL SHEETS	SHEET NO.
		•	•	MASON	86	25
STA. 48+00		TO STA. 63+00				
FED. ROAD DIST. NO.	ILLINOIS		FED. AID PROJECT			

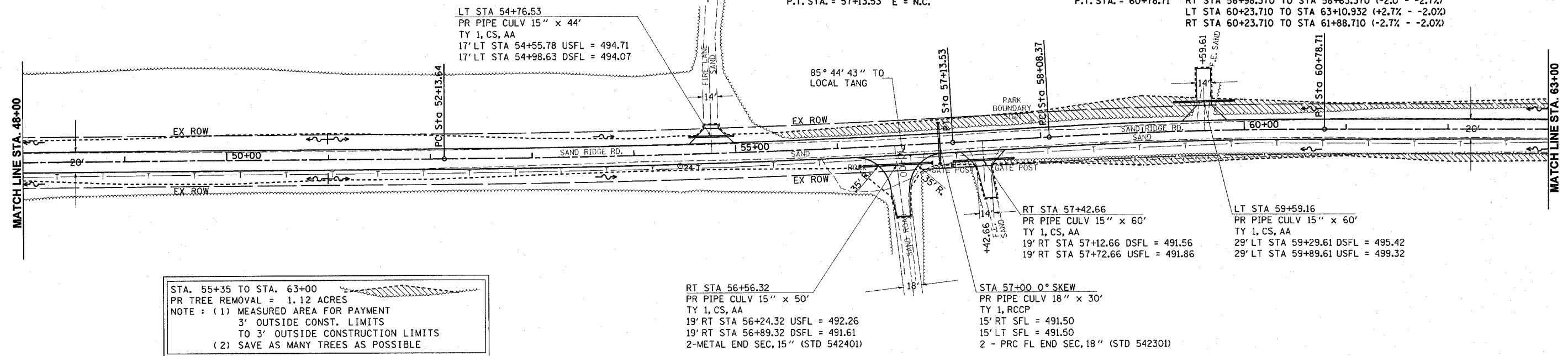


- PARK ROADS
- SAND RIDGE STATE FOREST INTERNAL ROADS 2004

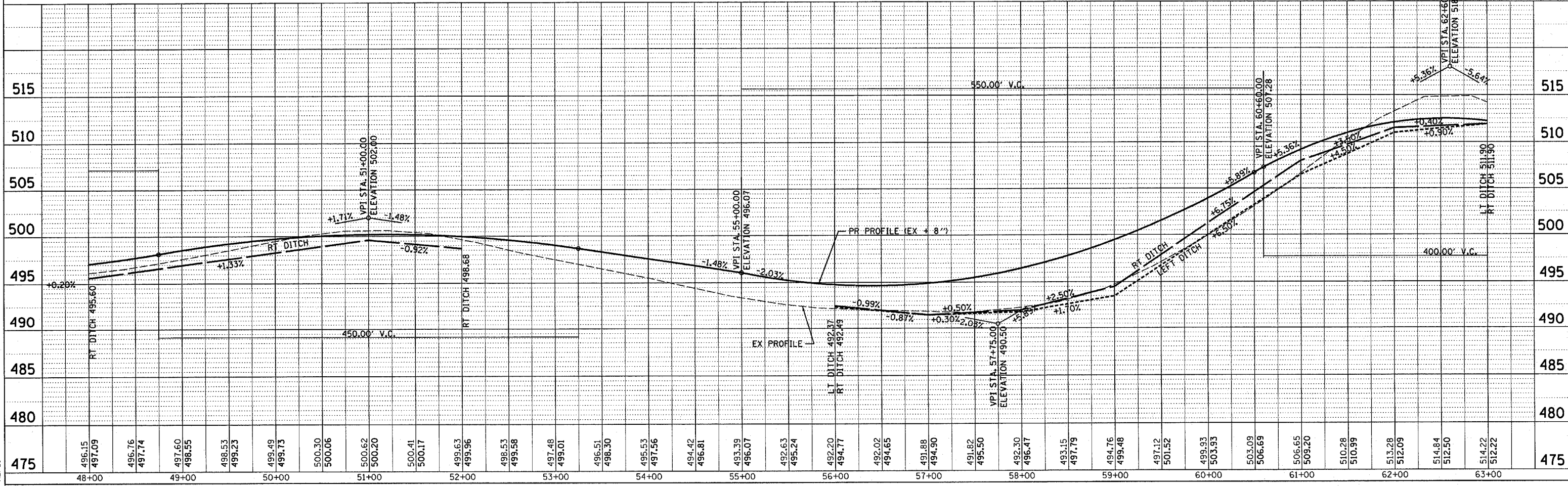
PROP. CURVE PS605
 PI STA. = 54+63.64
 $\Delta = 2^\circ 55' 29''$ (LT)
 $D = 0^\circ 35' 06''$
 $R = 9,793.38'$
 $T = 250.00'$
 $L = 499.89'$
 $E = 3.19'$
 P.C. STA. = 52+13.64
 P.T. STA. = 57+13.53 E = N.C.

PROP. CURVE PS606
 PI STA. = 59+43.58
 $\Delta = 3^\circ 08' 37''$ (RT)
 $D = 1^\circ 09' 46''$
 $R = 4,927.44'$
 $T = 135.20'$
 $L = 270.34'$
 $E = 1.85'$
 P.C. STA. = 58+08.37
 P.T. STA. = 60+78.71

SE = 2.70%
 SE TRANS:
 LT STA 55+76.148 TO STA 58+63.370 (-2.0% - +2.7%)
 RT STA 56+98.370 TO STA 58+63.370 (-2.0 - -2.7%)
 LT STA 60+23.710 TO STA 63+10.932 (+2.7% - -2.0%)
 RT STA 60+23.710 TO STA 61+88.710 (-2.7% - -2.0%)



STA. 55+35 TO STA. 63+00
 PR TREE REMOVAL = 1.12 ACRES
 NOTE : (1) MEASURED AREA FOR PAYMENT
 3' OUTSIDE CONST. LIMITS
 TO 3' OUTSIDE CONSTRUCTION LIMITS
 (2) SAVE AS MANY TREES AS POSSIBLE



DATE	BY	REVISION

DATE	BY	REVISION

c:\projects\d654196\p&psandridge.dgn
 2/6/2004
 *REF01