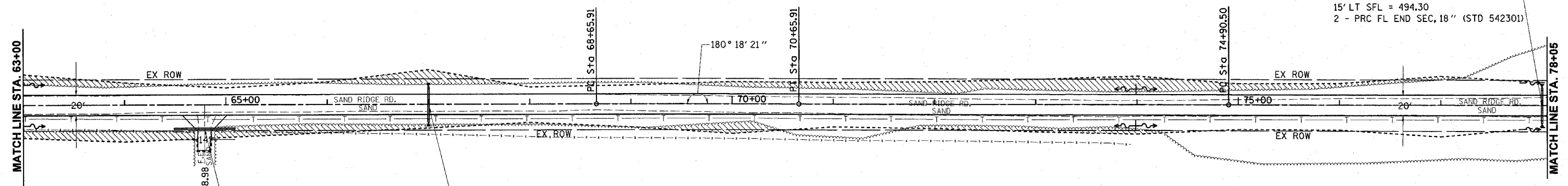


PROP. CURVE PS607
 PI STA. = 69+65.91
 $\Delta = 0^\circ 18' 21''$ (RT)
 $D = 0^\circ 09' 11''$
 $R = 37,453.53'$
 $T = 100.00'$
 $L = 200.00'$
 $E = 0.13'$
 P.C. STA. = 68+65.91
 P.T. STA. = 70+65.91 E = N.C.

STA 78+00 0° SKEW
 PR PIPE CULV 18" x 30'
 TY 1, RCCP
 15' RT SFL = 494.30
 15' LT SFL = 494.30
 2 - PRC FL END SEC, 18" (STD 542301)



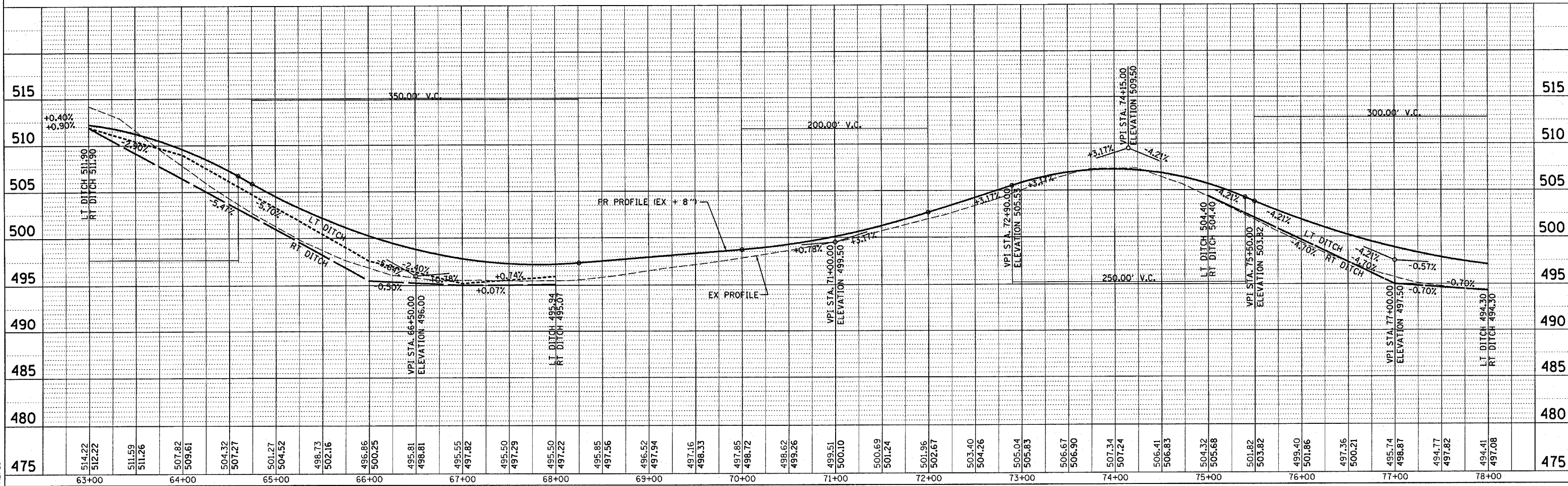
RT STA 64+78.98
 PR PIPE CULV 15" x 48'
 TY 1, CS, AA
 23' RT STA 64+48.98 USFL = 503.76
 23' RT STA 65+08.98 DSFL = 500.48

STA 67+00 0° SKEW
 PR PIPE CULV 18" x 30'
 TY 1, RCCP
 15' RT DSFL = 495.00
 15' LT USFL = 495.20
 2 - PRC FL END SEC, 18" (STD 542301)

STA. 63+00 TO STA. 67+70
 STA. 69+40 TO STA. 78+05
 PR TREE REMOVAL = 1.73 ACRES
 NOTE : (1) MEASURED AREA FOR PAYMENT
 3' OUTSIDE CONST. LIMITS
 TO 3' OUTSIDE CONSTRUCTION LIMITS
 (2) SAVE AS MANY TREES AS POSSIBLE

PLAN	SURVEYED	BY	DATE
	PLOTTED		
	NOTED		
	REVISIONS		
	NO. OF		
	DATE		

PROFILE	SURVEYED	BY	DATE
	PLOTTED		
	NOTED		
	REVISIONS		
	NO. OF		
	DATE		



ct:\p\o\j\654196\p&psandr\rdge.dgn
 2/6/2004
 *REF01